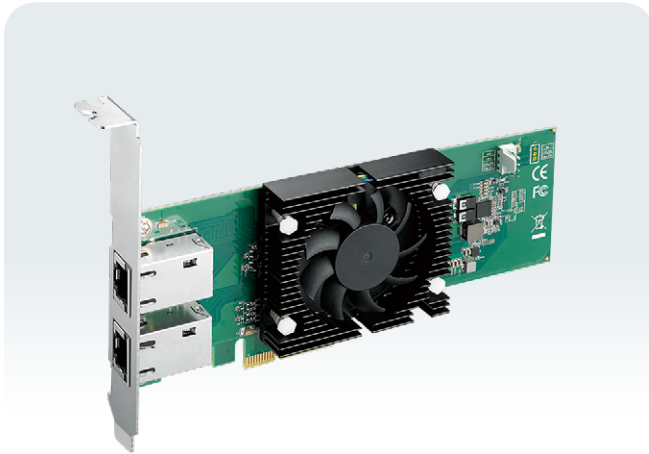


LE-1055

Low Profile 2-port 10 GigE LAN Expansion Card, PCI Express x4, -40°C to 55°C



Features

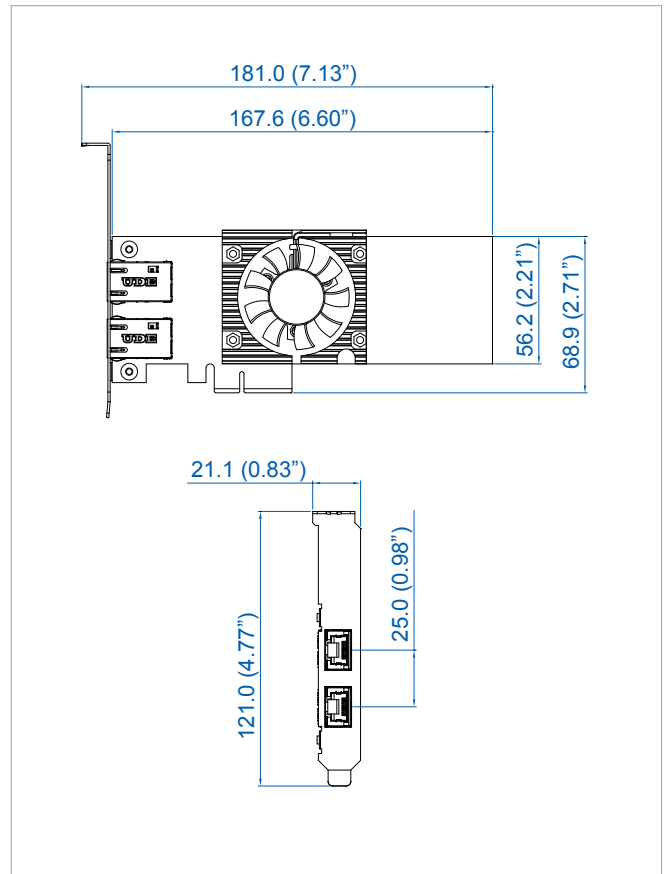
- Intel® X550-AT2 10GBASE-T controller supports up to 10Gbps data rate
- IEEE 802.3an Fast Ethernet standard compliant
- IEEE 1588 Precision Time Protocol (PTP)
- IEEE 802.1Q VLAN Tagging
- Up to 9728 bytes Jumbo Frame, Link Aggregation
- Supports Wake-on-LAN (WoL) & PXE
- Intel® Ethernet Power Management
- Intel® Data Direct I/O Technology
- Intel® Virtualization Technology for Connectivity (VT-c)
- Low Profile and Full Height form factors available
- -40°C to 55°C Operating Temperature



Specifications

Ethernet	
Interface	PCI Express x4
Controller	Intel® Ethernet Controller X550-AT2
Controller Qty	2
Data Rate	10Gbps/5Gbps/2.5Gbps/1Gbps/100Mbps
Number of Port	2
Jumbo Frame	Up to 9728 bytes
Link Aggregation (LAG)	Present
Connector	8-pin RJ45
Mechanical	
Dimensions (W x L)	168mm x 121mm (6.6" x 4.8", PCIe low profile)
Bracket	Full height/Low profile
Environment	
Operating Temperature	-40°C to 55°C (-40°F to 131°F, with Fan)
Storage Temperature	-40°C to 85°C (-40°F to 185°F)
Humidity	5% to 95% Humidity, non-condensing
Relative Humidity	95% @ 55°C
EMC	CE, FCC

Dimensions (mm/inch)



Order Information

LE-1055	2-port 10 GigE LAN Card with Intel® X550-AT2 Controllers
---------	--