

6

5

4

3

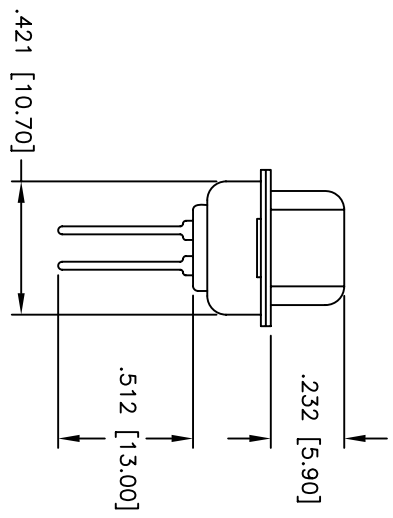
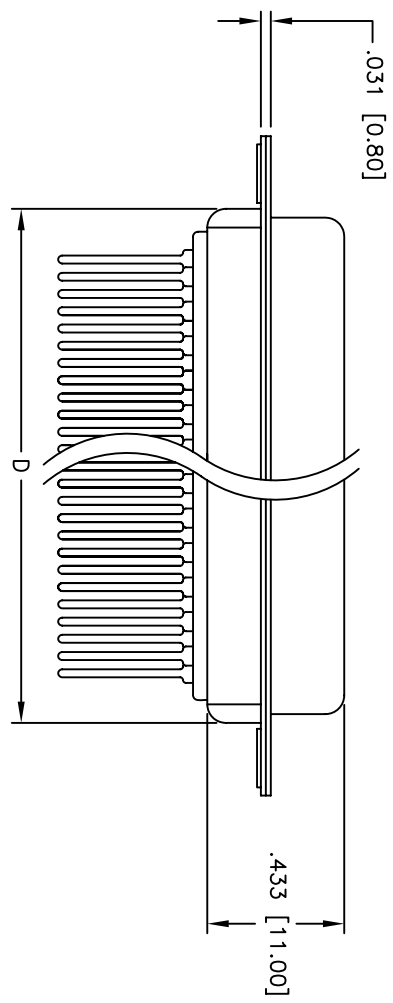
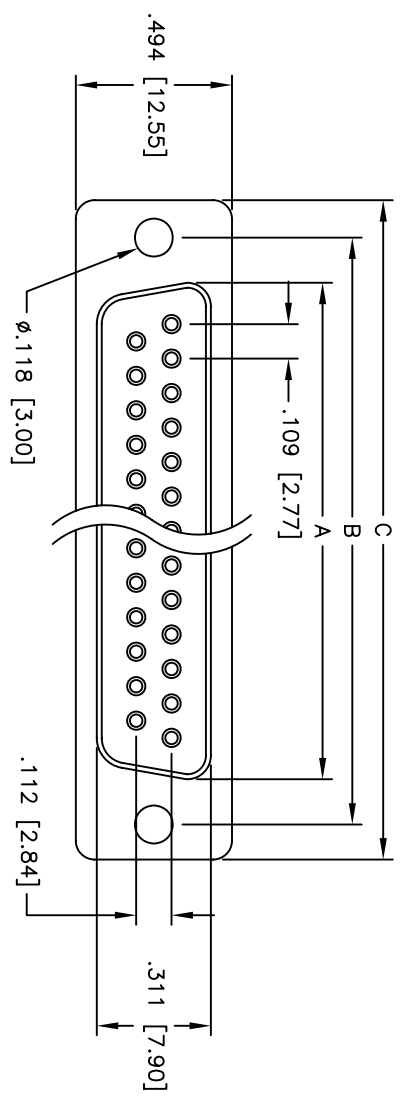
2

1

| Rev | AWO # | Description | Date    | Appr |
|-----|-------|-------------|---------|------|
| -   |       | RELEASED    | 4/15/05 |      |

APPROVED: \_\_\_\_\_

DATE: \_\_\_\_\_ TITLE: \_\_\_\_\_



| DXXX | NO. OF CONTACTS | DIMENSIONS    |               |               |               |
|------|-----------------|---------------|---------------|---------------|---------------|
|      |                 | A             | B             | C             | D             |
| DE09 | 9               | .643 [16.33]  | .984 [24.99]  | 1.213 [30.81] | .756 [19.20]  |
| DA15 | 15              | .971 [24.66]  | 1.312 [33.32] | 1.541 [39.14] | 1.091 [27.70] |
| DB25 | 25              | 1.511 [38.38] | 1.852 [47.04] | 2.088 [53.04] | 1.618 [41.10] |
| DC37 | 37              | 2.159 [54.84] | 2.500 [63.50] | 2.729 [69.32] | 2.256 [57.30] |

**SPECIFICATIONS:**

Material: Insulator: PBT, glass reinforced, rated UL 94V-0  
 Insulator color: Black  
 Contacts: Phosphor Bronze  
 Shell: Steel, Tin plated  
 Plating: Gold flash over Nickel underplate overall

Electrical:  
 Operating voltage: 250 VAC max  
 Current rating: 5 Amps max  
 Contact resistance: 20 mohms max  
 Insulation resistance: 5,000 Mohms min  
 Dielectric withstanding voltage: 1,000 VAC for 1 minute  
 Temperature Rating: Operating temperature: -65°C to +125°C

Environmental:  
 Lead free, RoHS compliant  
 Recommended soldering temp: 235°C for 5 seconds



**ADAM TECH**

909 Rahway Avenue, Union, NJ 07083  
 Phone: 908-687-5000 Fax: 908-687-5710

TITLE: D-SUB SOCKET, STANDARD PROFILE  
 WIRE WRAP TAIL

|   |           |   |            |               |  |
|---|-----------|---|------------|---------------|--|
| UNLESS OTHERWISE SPECIFIED<br>ALL DIMENSIONS ARE INCHES [MM]<br>TOLERANCES: EXCEPT AS NOTED |           | DRAWN: SS   |            | DATE: 4/15/05 |  |
| INCHES<br>.X ± .10<br>.XX ± .020<br>.XXX ± .015<br>XXX ± .010                               |           | HOLE SIZE<br>ØX ± .10<br>ØXXX ± .015<br>ØXXX ± .010 |            | DATE          |  |
| CHECKED   | APPROVALS | SIZE  | PART NO.   | REV.          |  |
| APPROVED  |           | X   | DXXX-ST-2  |               |  |
|   |           | REF:  | SCALE: NTS | SHEET 1 OF 1  |  |

6

5

4

3

2

1