



LR1198

Preliminary

CMOS IC

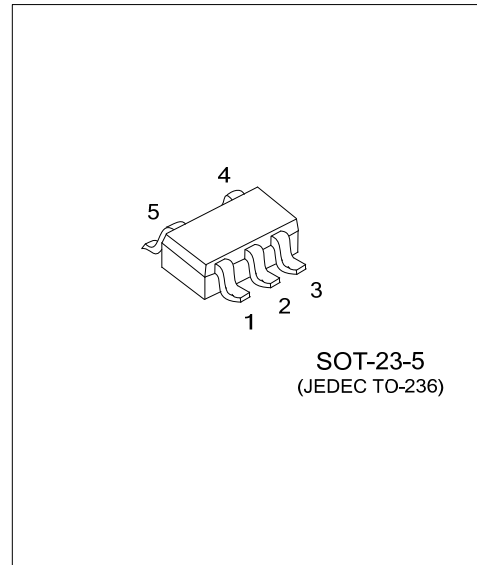
300mA, ULTRA-LOW NOISE, ULTRA-FAST CMOS LDO REGULATOR

DESCRIPTION

The **LR1198** low-noise, low-dropout, linear regulator operates from a 2.5V to 5.5V input and is guaranteed to deliver 300mA. The **LR1198** is designed and optimized for battery-powered systems to work with low noise and low quiescent current. For further reduction of output noise, a noise bypass pin is available.

The **LR1198** also requires only 1µF (typ.) of output capacitance for stability with any load, reducing the amount of board space necessary for power applications, critical in hand-held wireless devices.

The **LR1198** consumes less than 0.01µA in shutdown mode. The other features include ultra low dropout voltage, current limiting protection, thermal shutdown protection and high ripple rejection ratio.



SOT-23-5
(JEDEC TO-236)

FEATURES

- * 300mA Guaranteed Output Current
- * 0.01µA Shutdown Current
- * 220mV Dropout at 300mA Load
- * Low Temperature Coefficient
- * Current Limiting Protection
- * Thermal Shutdown Protection
- * Only 1µF Output Capacitor Required for Stability
- * Excellent Line/Load Transient

ORDERING INFORMATION

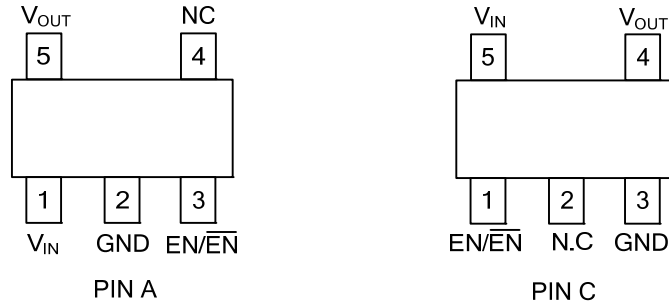
Ordering Number	Package	Packing
LR1198G-AE5-x-R	SOT-23-5	Tape Reel

<p>LR1198G-AE5-x-R</p> <ul style="list-style-type: none"> (1) Packing Type (2) Pin Assignment (3) Package Type (4) Green Package 	<ul style="list-style-type: none"> (1) R: Tape Reel (2) refer to PIN DESCRIPTION (3) AE5: SOT-23-5 (4) G: Halogen Free and Lead Free
--	--

MARKING

PACKAGE	VOLTAGE CODE	MARKING
SOT-23-5	15: 1.5V	

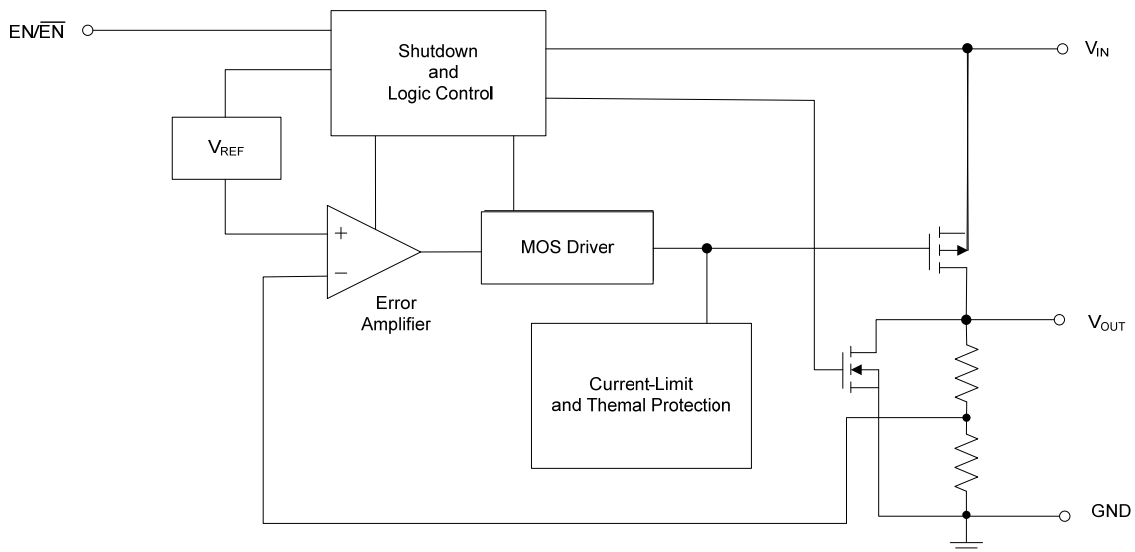
PIN CONFIGURATION



PIN DESCRIPTION

PIN NO		PIN NAME	DESCRIPTION
A	C		
1	5	V_{IN}	Power Input Voltage
2	3	GND	Ground
3	1	EN/\overline{EN}	Chip Enable (Active High). Note that this pin is high impedance. There should be a pull low 100kΩ resistor connected to GND when the control signal is floating.
4	2	N.C	
5	4	V_{OUT}	Output Voltage

BLOCK DIAGRAM



■ ABSOLUTE MAXIMUM RATING (Note 1)

PARAMETER	SYMBOL	RATINGS	UNIT
Supply Input Voltage (Operating)	V_{IN}	2.5 ~ 5.5	V
Supply Input Voltage (Survival)		-0.3 ~ +6	
Junction Temperature	T_J	+125	°C
Operation Temperature Range	T_{OPR}	-40 ~ +85	°C
Storage Temperature Range	T_{STG}	-65 ~ +150	°C

■ ELECTRICAL CHARACTERISTICS

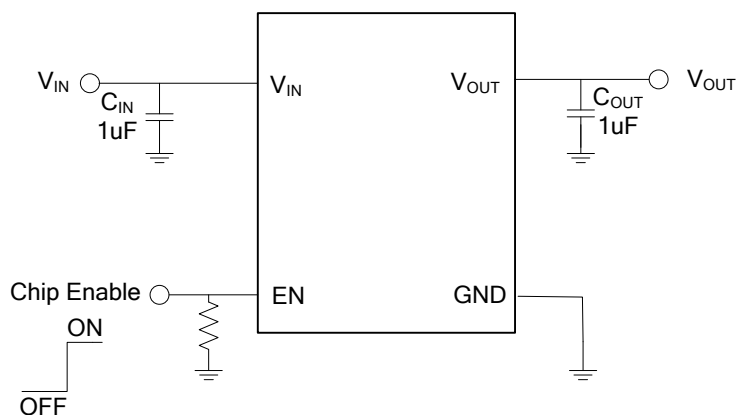
($V_{IN} = V_{OUT} + 1V$, $C_{IN} = C_{OUT} = 1\mu F$, $C_{BP} = 10nF$, $T_A = 25^\circ C$, unless otherwise specified)

PARAMETER	SYMBOL	TEST CONDITIONS	MIN	TYP	MAX	UNIT
Output Voltage Accuracy	ΔV_{OUT}	$I_{OUT} = 1mA$	-2		+2	%
Current Limit	I_{LIM}	$R_{LOAD} = 1\Omega$	360	400		mA
Quiescent Current	I_Q	$V_{EN} \geq 1.2V$, $I_{OUT} = 0mA$		90	130	μA
Dropout Voltage (Note 3)	V_{DROPO}	$I_{OUT} = 200mA$		500	600	mV
		$I_{OUT} = 300mA$		550	650	
Line Regulation	ΔV_{LINE}	$V_{IN} = (V_{OUT} + 0.3V)$ to 5.5V $I_{OUT} = 1mA$			0.3	%
Load Regulation	ΔV_{LOAD}	$1mA < I_{OUT} < 300mA$			0.6	%
Standby Current	I_{STBY}	$V_{EN} = GND$, Shutdown		0.01	2	μA
EN Input Bias Current	I_{EN}	$V_{EN} = GND$ or V_{IN}		0	1	μA
EN Threshold	V_{IH}	$V_{IN} = 3 \sim 5.5V$, Start-Up	1.2			V
	V_{IL}	$V_{IN} = 3 \sim 5.5V$, Shutdown			0.4	
Output Noise Voltage	e_{NO}	10Hz to 100kHz, $I_{OUT} = 200mA$ $C_{OUT} = 1\mu F$		100		μV_{RMS}
Power Supply Rejection Rate	PSRR	$C_{OUT} = 1\mu F$, $I_{OUT} = 10mA$, $f=10kHz$		-50		dB
Thermal Shutdown Temperature	T_{SD}			165		°C
Thermal Shutdown Temperature Hysteresis	ΔT_{SD}			30		°C

Notes: 1. Limits beyond which damage to the device may occur is indicated by absolute maximum ratings. Conditions for which the device is intended to be functional is indicated by operating ratings, but specific performance limits isn't be guaranteed. Only for the test conditions listed the guaranteed specifications can be applied. When the device is not operated under the listed test conditions some performance characteristics may degrade.

2. Which discharged through a 1.5k Ω resistor into each pin is a 100pF capacitor in the human body model.
3. The dropout voltage is defined as $V_{IN} - V_{OUT}$, which is measured when V_{OUT} is $V_{OUT(NORMAL)} - 100mV$.

■ TYPICAL APPLICATION CIRCUIT



■ APPLICATIONS INFORMATION

Enable Function

The LR1198 has an enable/disable function. Force EN high (>1.2V) enables the V_{OUT} ; force EN low (<0.4V) disables the V_{OUT} . For protecting the system, the LR1198 have a quick-discharge function. If it is not used, connect to VIN for normal operation.

UTC assumes no responsibility for equipment failures that result from using products at values that exceed, even momentarily, rated values (such as maximum ratings, operating condition ranges, or other parameters) listed in products specifications of any and all UTC products described or contained herein. UTC products are not designed for use in life support appliances, devices or systems where malfunction of these products can be reasonably expected to result in personal injury. Reproduction in whole or in part is prohibited without the prior written consent of the copyright owner. The information presented in this document does not form part of any quotation or contract, is believed to be accurate and reliable and may be changed without notice.