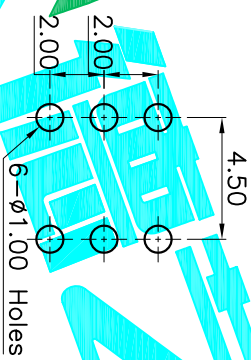
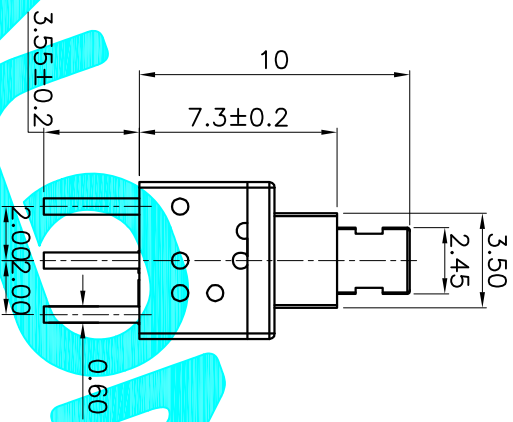
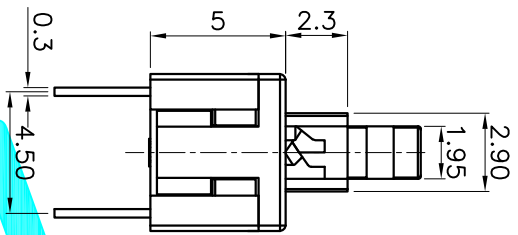
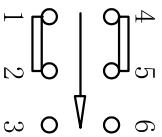
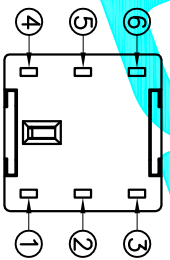


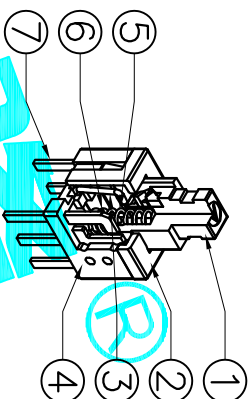
NOTE:
 1. Operating Force: 180gf±50gf
 2. Travel : 2.0±0.2mm



PCB Layout(Pattern Side)



Circuit Diagram



NO.	Operating Type	Part No.
1	Push To Lock	PB-22E60-L
2	Push No Lock	PB-22E60-N
3	Push No Sound No Lock	PB-22E60-S

ITEM	PART NAME	QTY.	MATERIAL	FINISHING
⑦	Terminal	6	Brass strip	Plating silver
⑥	Contact	2	Phosphor bronze	Plating silver
⑤	Spring	1	SUS	Natural
④	Base	1	Nylon	Gray
③	Crochet Needle	1	SUS	Natural
②	Cover	1	POM	Black
①	KNOB	1	POM	White

APPROVALS		DATE	DRAWING NO.	
DRAWN	G.M.Chen	2015/4/16	PB-22E60-X	
CHECKED			PUSH SWITCH	
APPROVALS			PART NO.	
TOLERANCES ARE			SCALE: 1:1	SHEET 1 OF 1
30 ^{±0.15}	±0.30	ANGLE		
10 ^{±0.10}	±0.20	UNIT: mm		
5 ^{±0.10}	±0.15	±2°		PROJ.



ECN NO.	REV.	DATE.	DESCRIPTION.	CHANGE.	CHECK.	APPRO.
	A		NEW			