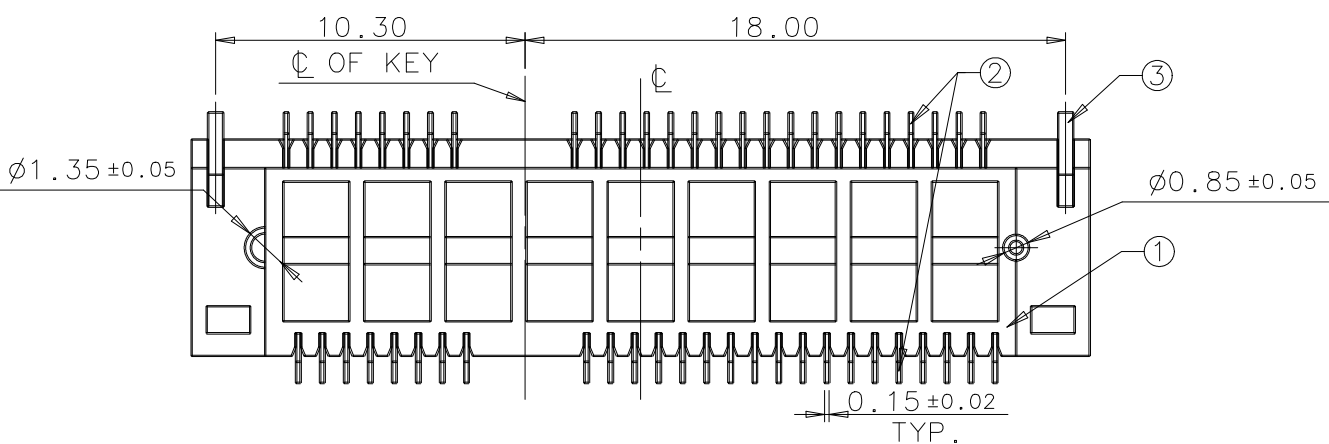


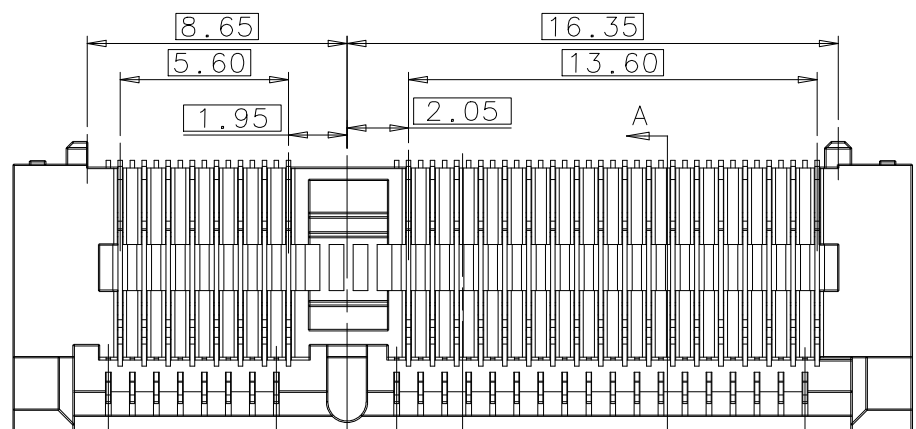
IDEAS GENERATED DRAWING, DO NOT CHANGE BY HAND

REV.	ECN. NO.	APPD.
A	BC-11-0002261	Herry Yang
B	BC-11-0053920	Herry Yang
C	BC-11-0071635	Herry Yang
D	BC-12-0009691	Y.H.Mao
E	BC-14-0006311	C.S.Li



NOTES:

- ELECTRICAL CHARACTERISTICS :
  - CONTACT CURRENT RATING : 0.5 AMPERE MAX. PER PIN.  
DOESN'T EXCEED 30°C ABOVE AMBIENT AT 0.5 AMPERE MAX. PER PIN.
  - VOLTAGE RATING 50V AC.
  - INSULATION RESISTANCE : 500 MEGAOHMS. MIN. AT 500V DC.
  - DIELECTRIC WITHSTANDING VOLTAGE:300V AC RMS AT 60Hz, FOR 1 MINUTE.
  - CONTACT RESISTANCE:55 MILLIOHMS MAX. PER PIN INITIAL,  
ΔR=20 MILLIOHMS MAX. PER PIN AFTER FULL ENVIRONMENTAL TESTING.
- MECHANICAL CHARACTERISTICS :DURABILITY : 50 MATING CYCLES.
- OPERATION TEMPERATURE : -40°C TO +80°C
- PLEASE CONTACT FOXCONN SALES REPRESENTATIVE TO VERIFY PRODUCT DETAILS & AVAILABILITY.

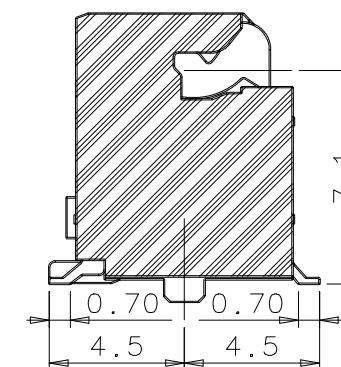
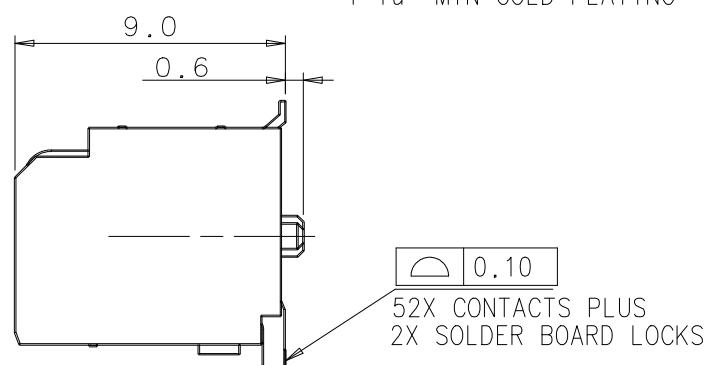
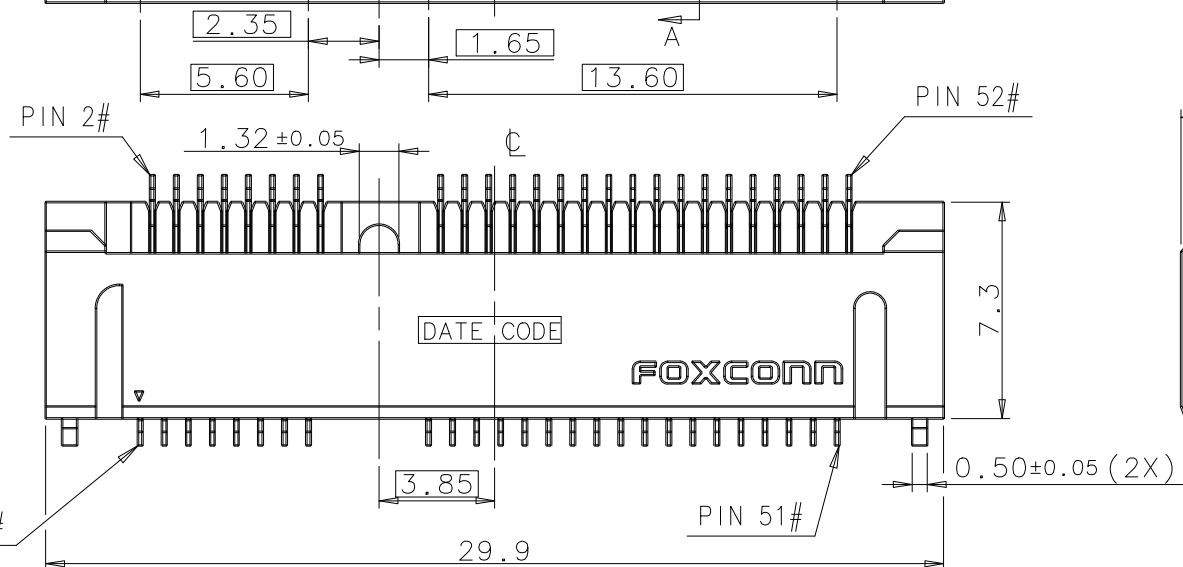


PART NO. DESCRIPTION: A S 0 B2 2 \* - S 90 Q-7 H

MEMORY MODULE SOCKET  
 HORIZONTAL TYPE  
 SINGLE ROW  
 NO. OF POS.  
 B2= 52 POS.  
 SMT

H=HALOGEN/LEAD FREE  
 7=TAPE&REEL  
 Q=GENERAL TYPE  
 90=9.0mm HEIGHT  
 STANDARD TYPE

CONTACT AREA PLATING  
 6=10u" MIN GOLD PLATING  
 1=1u" MIN GOLD PLATING



SECTION A-A

ITEM	DESCRIPTION	Q'TY	MATERIAL	TREATMENT
③	BOARD LOCK	2	COPPER ALLOY	50u" NICKEL UNDER PLATING 100u" MATTE TIN PLATING OVER ALL
②	CONTACT	52	COPPER ALLOY	50u" NICKEL UNDER PLATING GOLD FLASH PLATING AT TAIL 10u" MIN GOLD PLATING OR 1u" MIN GOLD PLATING AT CONTACT AREA
①	HOUSING	1	THERMOPLASTIC	UL94V-0 IVORY COLOR

X. ± 0.30	X° ± 2°	UNITS	mm
.X ± 0.25	.X° ± 1°	MAT'L	
.XX ± 0.15	.XX° ±	FINISH	
.XXX ±	.XXX° ±	Q'TY	

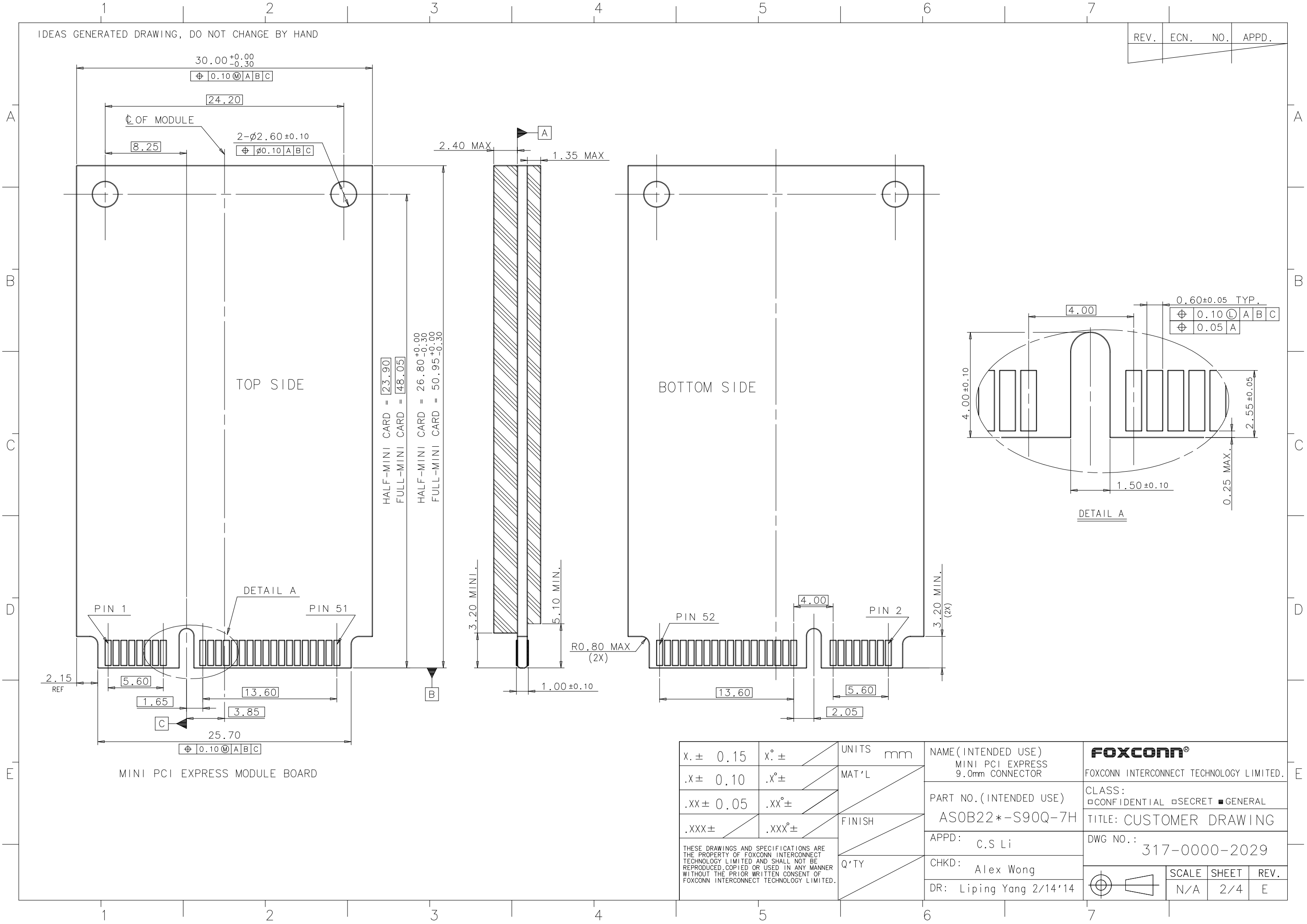
THESE DRAWINGS AND SPECIFICATIONS ARE THE PROPERTY OF FOXCONN INTERCONNECT TECHNOLOGY LIMITED AND SHALL NOT BE REPRODUCED, COPIED OR USED IN ANY MANNER WITHOUT THE PRIOR WRITTEN CONSENT OF FOXCONN INTERCONNECT TECHNOLOGY LIMITED.

NAME (INTENDED USE)	MINI PCI EXPRESS 9.0mm CONNECTOR
PART NO. (INTENDED USE)	ASOB22*-S90Q-7H
APPD:	C.S Li
CHKD:	Alex Wong
DR:	Liping Yang 2/14'14

<b>FOXCONN®</b>		
FOXCONN INTERCONNECT TECHNOLOGY LIMITED.		
CLASS: <input type="checkbox"/> CONFIDENTIAL <input type="checkbox"/> SECRET <input checked="" type="checkbox"/> GENERAL		
TITLE: CUSTOMER DRAWING		
DWG NO.: 317-0000-2029		
SCALE	SHEET	REV.
N/A	1/4	E

IDEAS GENERATED DRAWING, DO NOT CHANGE BY HAND

REV.	ECN.	NO.	APPD.

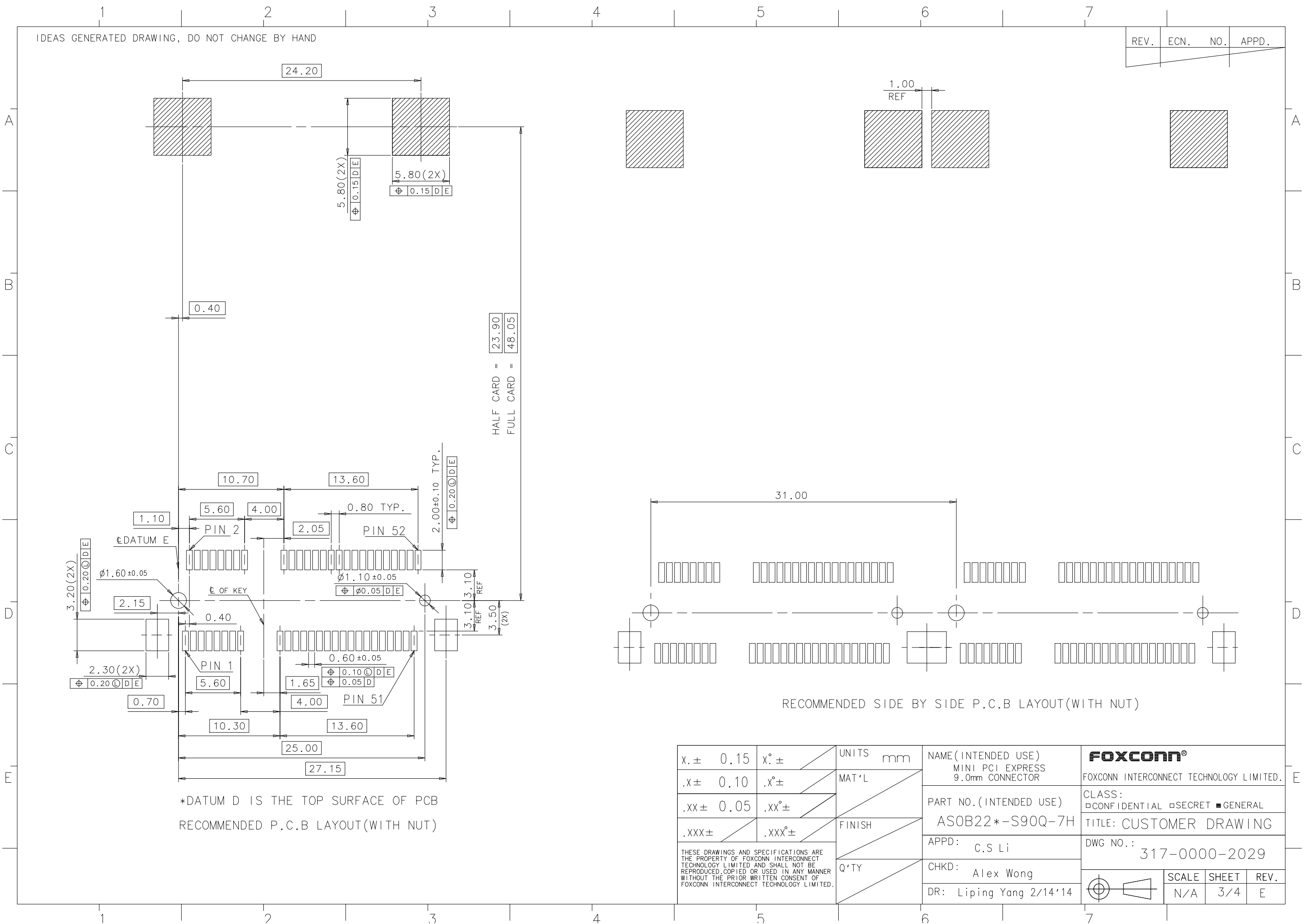


MINI PCI EXPRESS MODULE BOARD

X. ± 0.15	X° ±	UNITS	mm	NAME (INTENDED USE) MINI PCI EXPRESS 9.0mm CONNECTOR	<b>FOXCONN®</b> FOXCONN INTERCONNECT TECHNOLOGY LIMITED.
.X ± 0.10	.X° ±	MAT'L			
.XX ± 0.05	.XX° ±	FINISH		PART NO. (INTENDED USE) AS0B22*-S90Q-7H	CLASS: <input type="checkbox"/> CONFIDENTIAL <input type="checkbox"/> SECRET <input checked="" type="checkbox"/> GENERAL
.XXX ±	.XXX° ±		Q'TY		APPD: C.S Li
THESE DRAWINGS AND SPECIFICATIONS ARE THE PROPERTY OF FOXCONN INTERCONNECT TECHNOLOGY LIMITED AND SHALL NOT BE REPRODUCED, COPIED OR USED IN ANY MANNER WITHOUT THE PRIOR WRITTEN CONSENT OF FOXCONN INTERCONNECT TECHNOLOGY LIMITED.				CHKD: Alex Wong	DWG NO.: 317-0000-2029
				DR: Liping Yang 2/14'14	SCALE SHEET REV. N/A 2/4 E

IDEAS GENERATED DRAWING, DO NOT CHANGE BY HAND

REV.	ECN.	NO.	APPD.



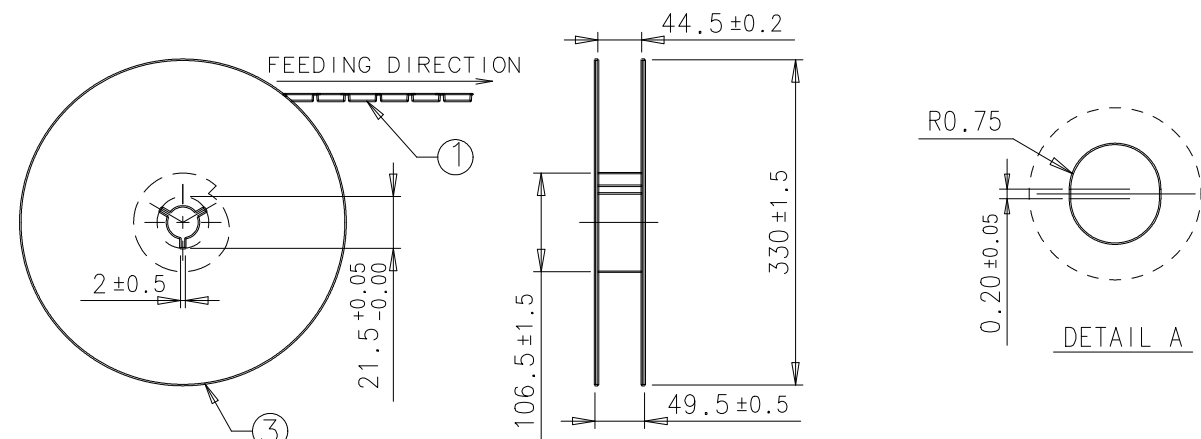
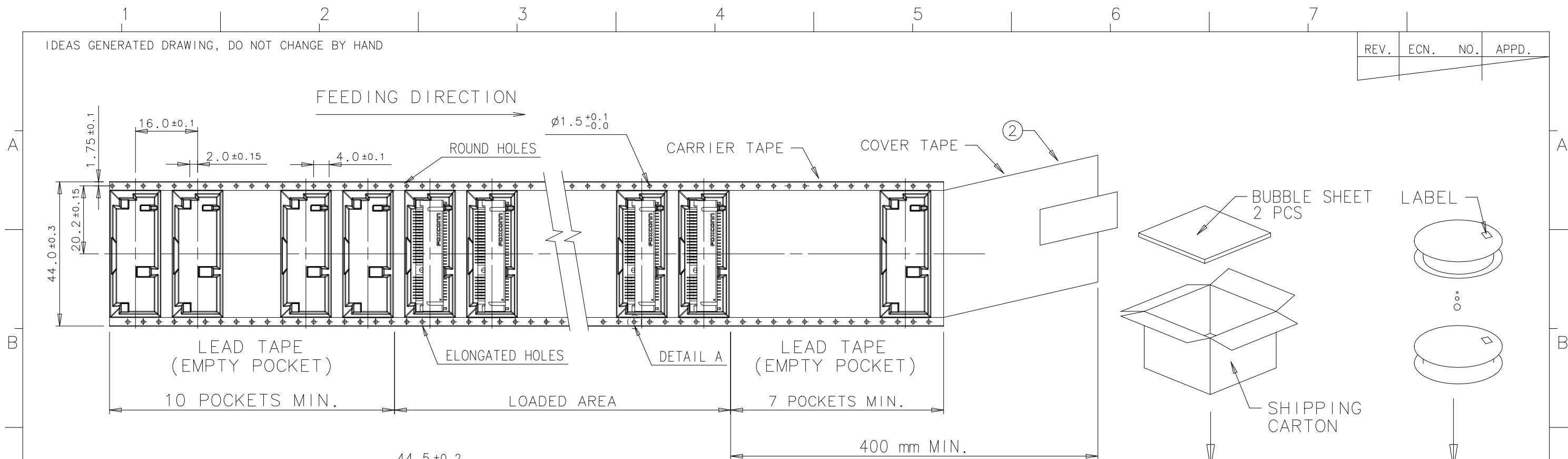
\*DATUM D IS THE TOP SURFACE OF PCB  
RECOMMENDED P.C.B LAYOUT(WITH NUT)

RECOMMENDED SIDE BY SIDE P.C.B LAYOUT(WITH NUT)

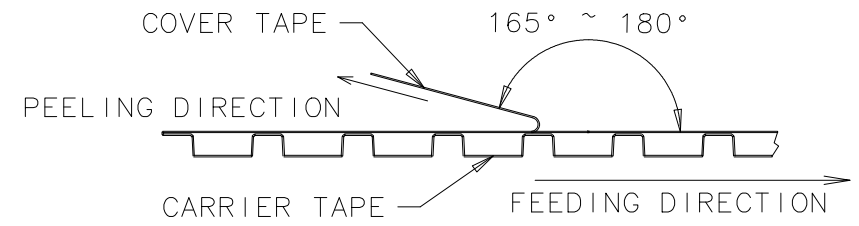
X. ± 0.15	X° ±	UNITS	mm	NAME (INTENDED USE) MINI PCI EXPRESS 9.0mm CONNECTOR	<b>FOXCONN®</b> FOXCONN INTERCONNECT TECHNOLOGY LIMITED.
.X ± 0.10	.X° ±	MAT'L			
.XX ± 0.05	.XX° ±	FINISH		PART NO. (INTENDED USE) ASOB22*-S90Q-7H	CLASS: <input type="checkbox"/> CONFIDENTIAL <input type="checkbox"/> SECRET <input checked="" type="checkbox"/> GENERAL
.XXX ±	.XXX° ±		Q'TY	APPD: C.S Li	TITLE: CUSTOMER DRAWING
THESE DRAWINGS AND SPECIFICATIONS ARE THE PROPERTY OF FOXCONN INTERCONNECT TECHNOLOGY LIMITED AND SHALL NOT BE REPRODUCED, COPIED OR USED IN ANY MANNER WITHOUT THE PRIOR WRITTEN CONSENT OF FOXCONN INTERCONNECT TECHNOLOGY LIMITED.				CHKD: Alex Wong	DWG NO.: 317-0000-2029
				DR: Liping Yang 2/14'14	SCALE SHEET REV. N/A 3/4 E

IDEAS GENERATED DRAWING, DO NOT CHANGE BY HAND

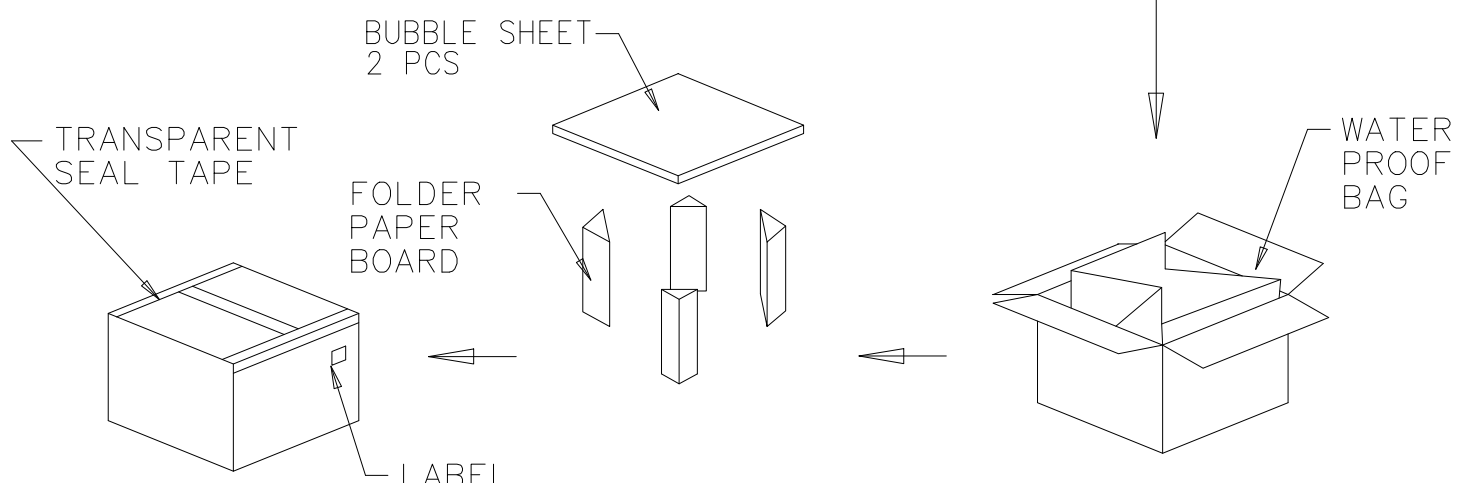
REV.	ECN.	NO.	APPD.



- NOTES:
- 10 POCKETS HOLE PITCH CUMULATIVE TOLERANCE ±0.20mm.
  - COVER TAPE PEELING STRENGTH : 0.01 kgf MIN & 0.13 kgf MAX. AT 300mm/min.



3. PACKING CAPACITY : 240 PCS/REEL, 5 REELS/BOX, TOTAL 1200 PCS/BOX.



③	REEL	POLYSTYRENE
②	COVER TAPE	POLYESTER
①	CARRIER TAPE	POLYSTYRENE
ITEM	DESCRIPTION	MATERIAL

x. ± 0.15	x° ±	UNITS	mm	NAME (INTENDED USE) MINI PCI EXPRESS 9.0mm CONNECTOR	<b>FOXCONN®</b> FOXCONN INTERCONNECT TECHNOLOGY LIMITED.		
.x ± 0.10	.x° ±	MAT'L					
.xx ± 0.05	.xx° ±	FINISH		PART NO. (INTENDED USE) AS0B22*-S90Q-7H	CLASS: <input type="checkbox"/> CONFIDENTIAL <input type="checkbox"/> SECRET <input checked="" type="checkbox"/> GENERAL		
.xxx ±	.xxx° ±		Q'TY	APPD: C.S Li	TITLE: CUSTOMER DRAWING		
THESE DRAWINGS AND SPECIFICATIONS ARE THE PROPERTY OF FOXCONN INTERCONNECT TECHNOLOGY LIMITED AND SHALL NOT BE REPRODUCED, COPIED OR USED IN ANY MANNER WITHOUT THE PRIOR WRITTEN CONSENT OF FOXCONN INTERCONNECT TECHNOLOGY LIMITED.				CHKD: Alex Wong	DWG NO.: 317-0000-2029		
				DR: Liping Yang 2/14'14	SCALE	SHEET	REV.
					N/A	4/4	E