



# PRODUCT SPECIFICATION

REV A January 2011


Oscilent Controlled Document

Ordering Code / Part Number	Product Description
867-SL211.2M-20A	211.2MHz IF SAW Filter 20.84 MHz Bandwidth

## Specification Contents

- o Mechanical Dimensions
- o Test Circuit
- o Maximum Ratings
- o Electrical Specification
- o Frequency Response
- o Smith Chart

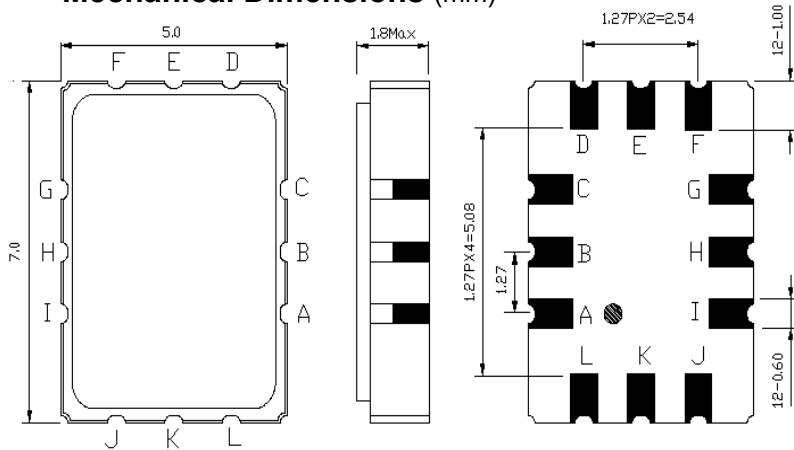
## Notes

- o Electrostatic Sensitive Device (ESD) 
- o Avoid excessive ultrasonic exposure
- o Solderability compatible with JEDEC J-STD-020C Pb-free process, 260°C peak reflow temperature
- o This product complies with EU directive 2002/95/EC (RoHS compliance)



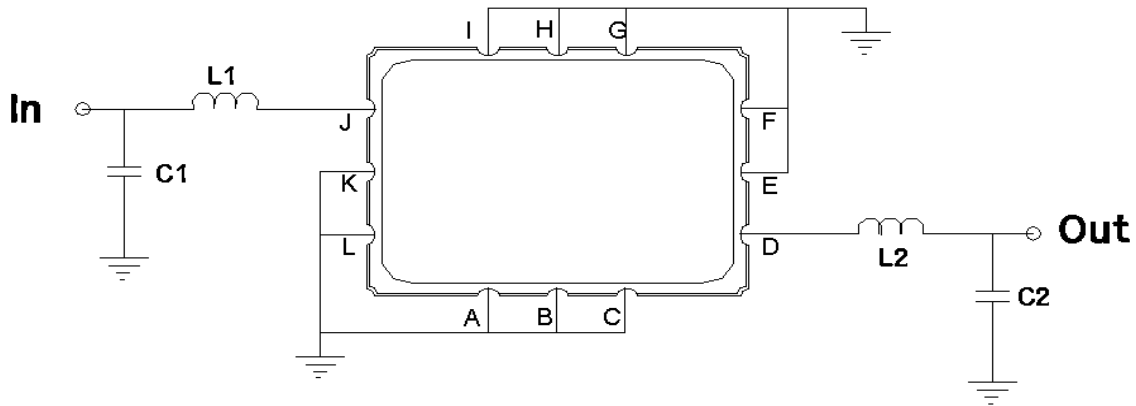


### Mechanical Dimensions (mm)



Pin Description	
A, B, C, E, F, G, H, I, K, L	Ground
J	Input
L	Output
D	
F	

### Test Circuit



Test Fixture & Values	
Input	L1=27 nH, C1=33 pF
Output	L2=27 nH, C2=33 pF
Source/Load Impedance	50 Ω



## Maximum Ratings

Parameters Description	Unit	Minimum	Typical	Maximum
Operating Temperature Range	°C	-40	-	85
Storage Temperature Range	°C	-40	-	85
Maximum DC Voltage	V	-	-	10
Maximum Input Power	dBm	-	-	10
Source Impedance (single ended) <sup>(1)</sup>	Ω	-	50	-
Load Impedance (single ended) <sup>(1)</sup>	Ω	-	50	-

Notes: With Matching Network (Ref. Testing Environment Circuit as shown above).  
Those impedances could be modified with different impedance values and/or structures, if necessary.

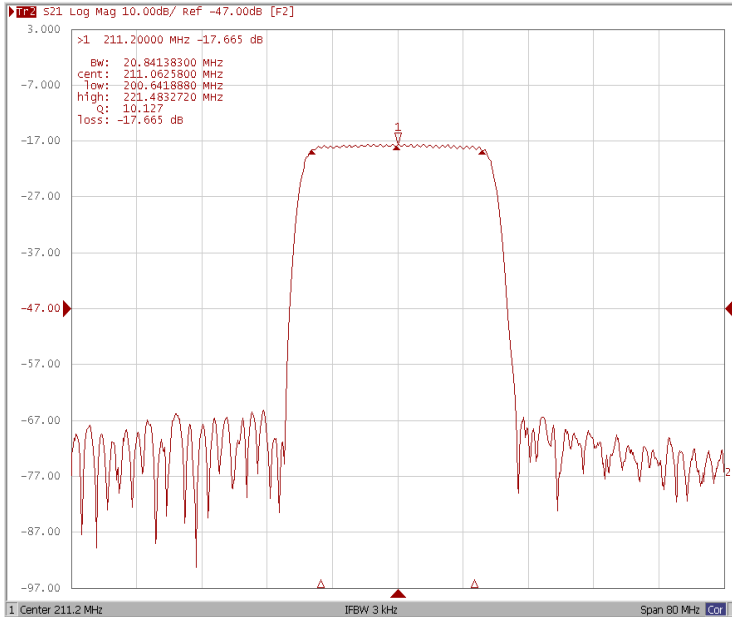
## Electrical Specification

Parameters Description	Unit	Minimum	Typical	Maximum
Center Frequency (Fo)	MHz	-	211.2	-
Insertion Loss at Fo	dB	-	17.6	19.0
Amplitude Ripple at Fo ± 9.42MHz	dB <sub>p-p</sub>	-	0.8	1.5
Amplitude Ripple at Fo ± 10.0MHz	dB <sub>p-p</sub>	-	0.9	2.0
Group Delay Variation at Fo ± 10.0MHz	ns	-	70	120
Absolute Delay at Fo	μs	-	0.68	-
Temperature Coefficient	ppm/°C	-	-18	-
Bandwidth at -1.0 dB	MHz	18.84	20.84	-
Bandwidth at -40.0 dB	MHz	-	27.66	29.00
VSWR	-	-	-	2.2
Relative Attenuation				
10MHz ~ 100MHz	dB	50	-	-
100MHz ~ 168MHz	dB	52	-	-
168MHz ~ 196.5MHz	dB	35	-	-
250MHz ~ 270MHz	dB	58	-	-
270MHz ~ 350MHz	dB	60	-	-
350MHz ~ 1000MHz	dB	45	-	-

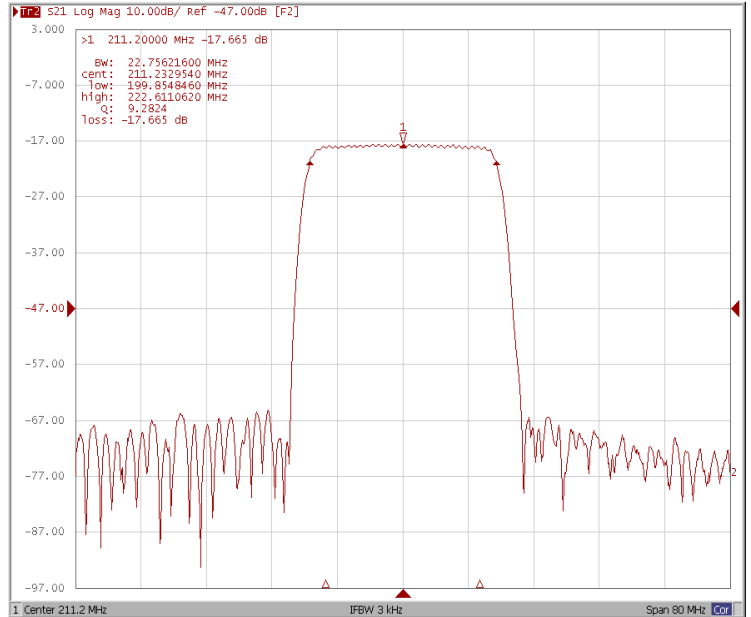


### Frequency Response

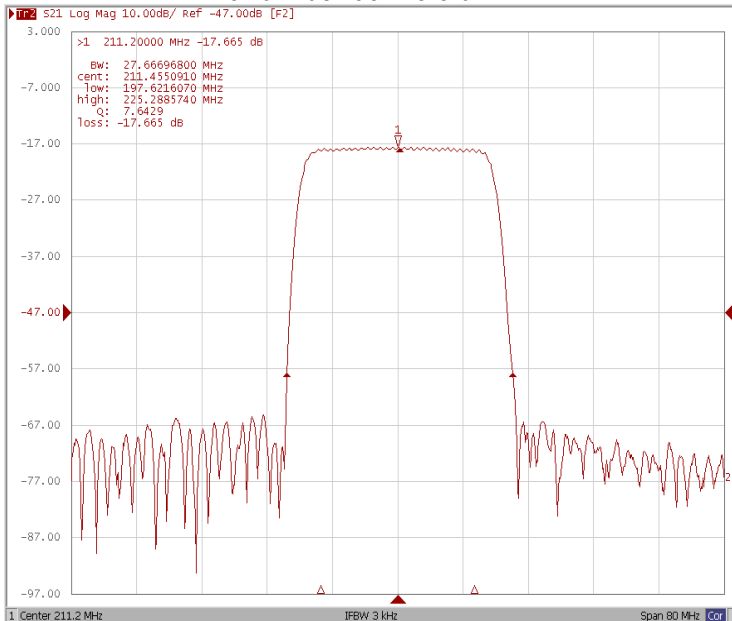
#### Bandwidth at -1.0 dB



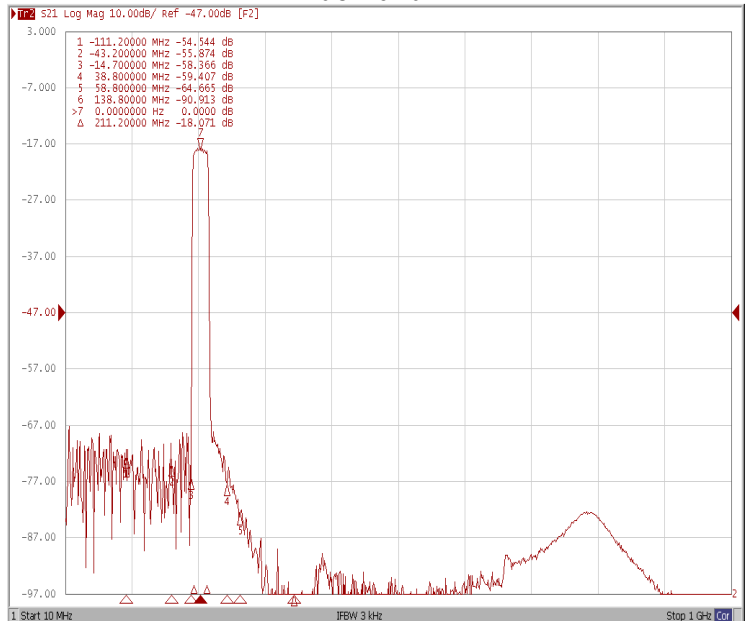
#### Bandwidth at -3.0 dB



#### Bandwidth at -40.0 dB

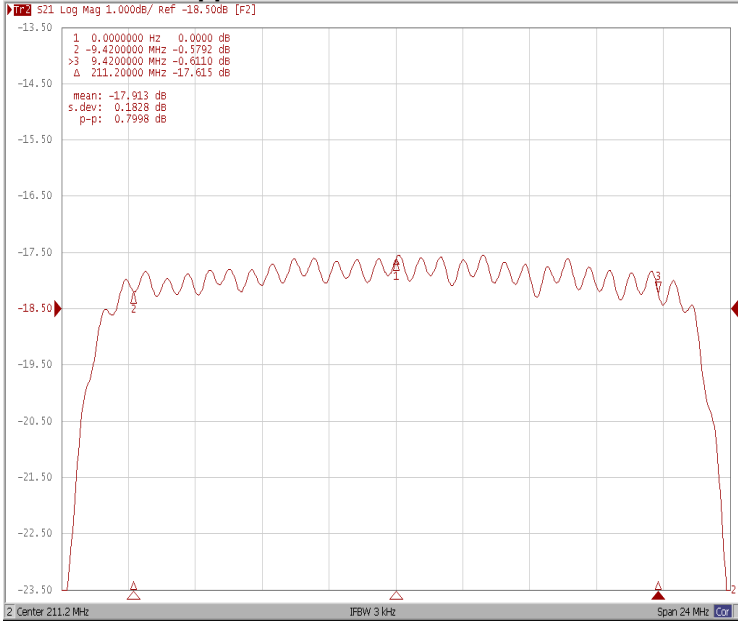


#### Wide-Band

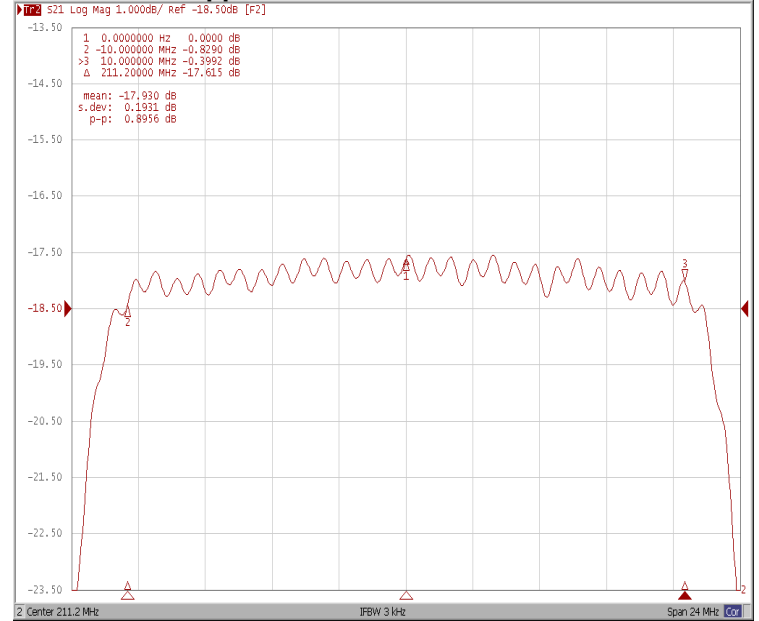




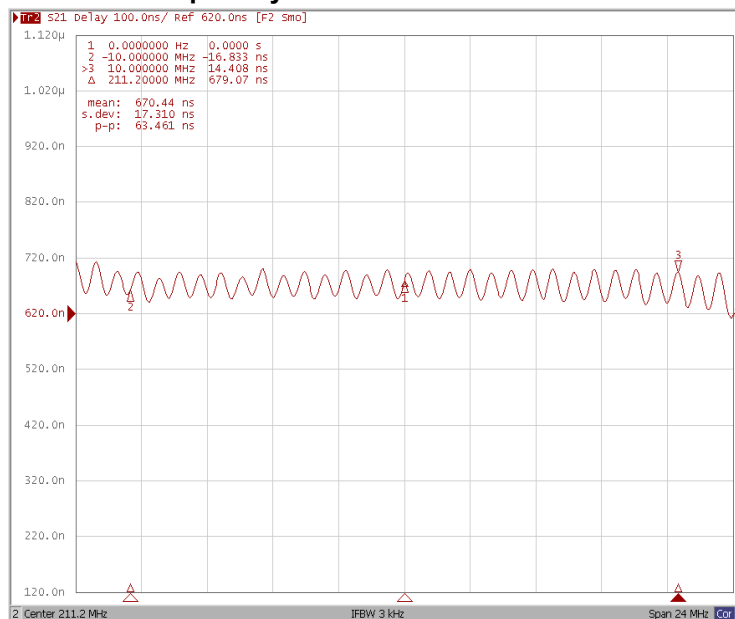
### Ripple Variation at Fo ±9.42MHz



### Ripple Variation at Fo ±10.0MHz



### Group Delay Variation at Fo ±10.0MHz





### Smith Chart

