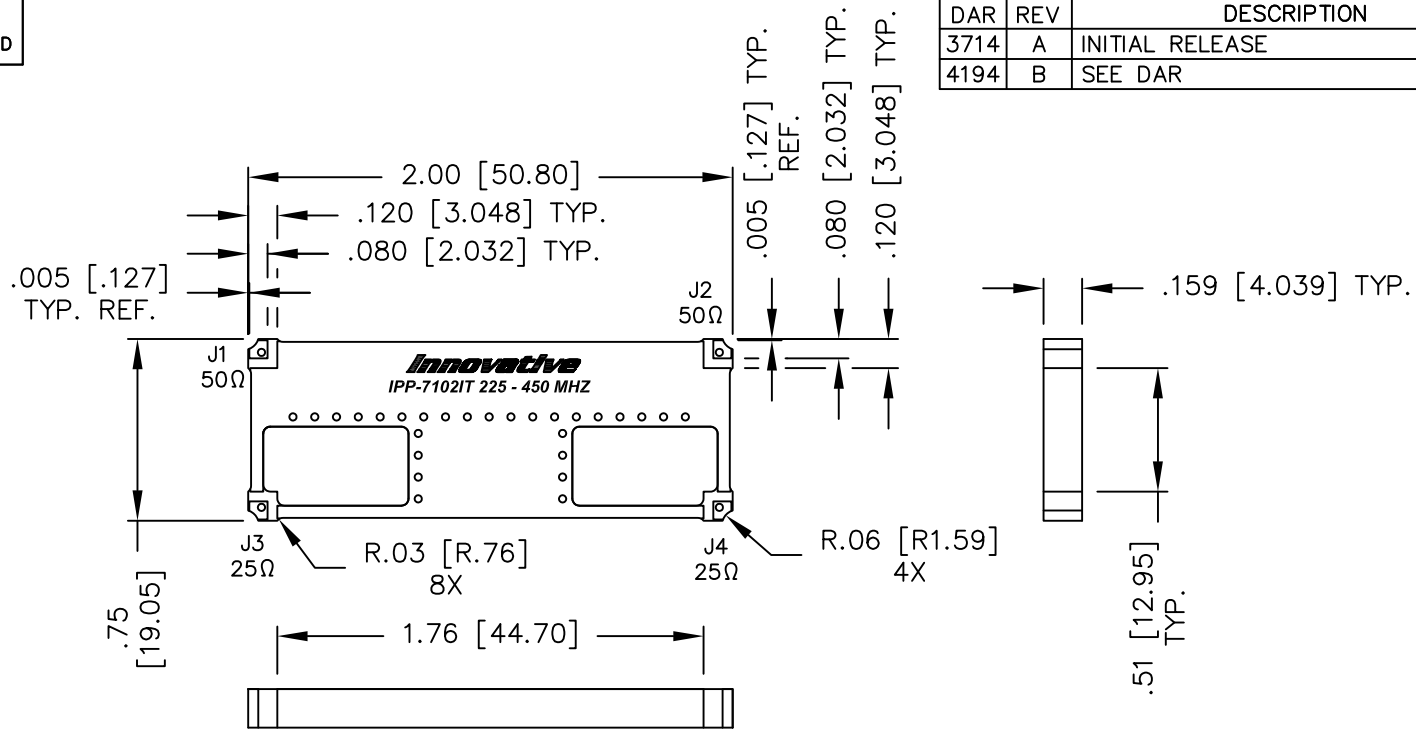


UNAUTHORIZED USE OF THIS
DRAWING IS STRICTLY PROHIBITED

DAR	REV	DESCRIPTION	APPVD	DATE
3714	A	INITIAL RELEASE	DG	6-12
4194	B	SEE DAR	DG	3-13



NOTES:

1. PATENTED DESIGN: US PATENT #8174338.
2. SEE SMD COUPLER APPLICATION NOTE FOR FURTHER INFORMATION.
3. PARTS WITH RoHS MATTE TIN FINISH ARE RoHS COMPLIANT.
4. AVAILABLE IN TAPE AND REEL. SEE SMD COUPLER APPLICATION NOTE FOR FURTHER INFORMATION.
5. DO NOT EXCEED 220°C WHEN INSTALLING COUPLER.

ELECTRICAL SPECIFICATIONS

FREQUENCY: 225 – 450 MHz.
 INSERTION LOSS: <0.45 dB
 VSWR: <1.25:1
 ISOLATION: >15dB
 AMPLITUDE BALANCE: ±0.6dB
 PHASE BALANCE: ±5°
 POWER: 100 WATT
 TEMPERATURE: -55°C TO 85°C

FINISH	
P/N	TYPE
IPP-7102IT	TIN/LEAD
IPP-7102ITRT	RoHS MATTE TIN

PORT CONFIGURATION				
INPUT	J1 50Ω	J2 50Ω	J3 25Ω	J4 25Ω
J1 50Ω	---	ISOLATION	-3dB<0 DEG	-3dB<-90 DEG
J2 50Ω	ISOLATION	---	-3dB<-90 DEG	-3dB<0 DEG
J3 25Ω	-3dB<0 DEG	-3dB<-90 DEG	---	ISOLATION
J4 25Ω	-3dB<-90 DEG	-3dB<0 DEG	ISOLATION	---

MATERIAL	DWN S.Cornell	DATE 6-7-12			
FINISH	ENG DG	DATE 6-12			
TOLERANCE	SEE CHART	MANUF	DATE	TITLE OUTLINE,IT90, IMPEDANCE TRANSFORMING SMD COUPLER, 90°, 225 - 450 MHZ. 100W	
	.XX ±.02 [.50] .XXX ±.010 [.254] ANG. ±1/2°	CAGE CODE: 437R2			
IN [MM]		SHEET 1	OF 1	SCALE 2:1	IPP-7102IT*