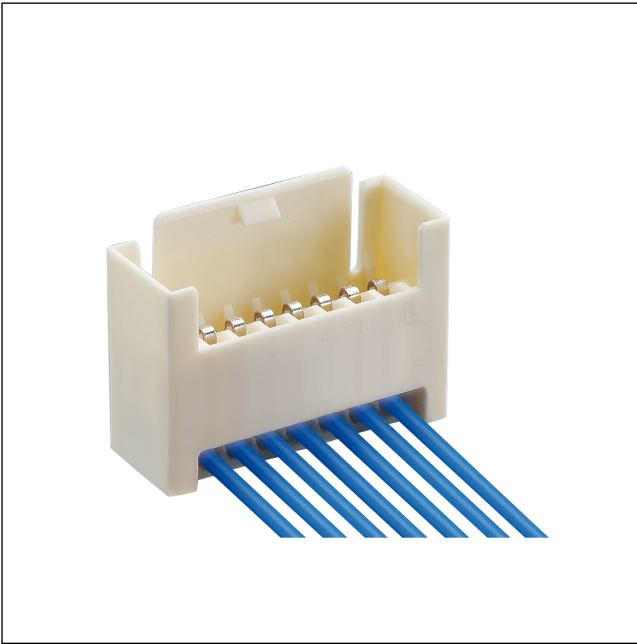


35

3541-1

RAST 2.5 connectors, pitch 2.5/5.0 mm



RAST 2.5 pin header, insulation displacement technology (IDT), with locking latch  
contact pitch 2.5 mm

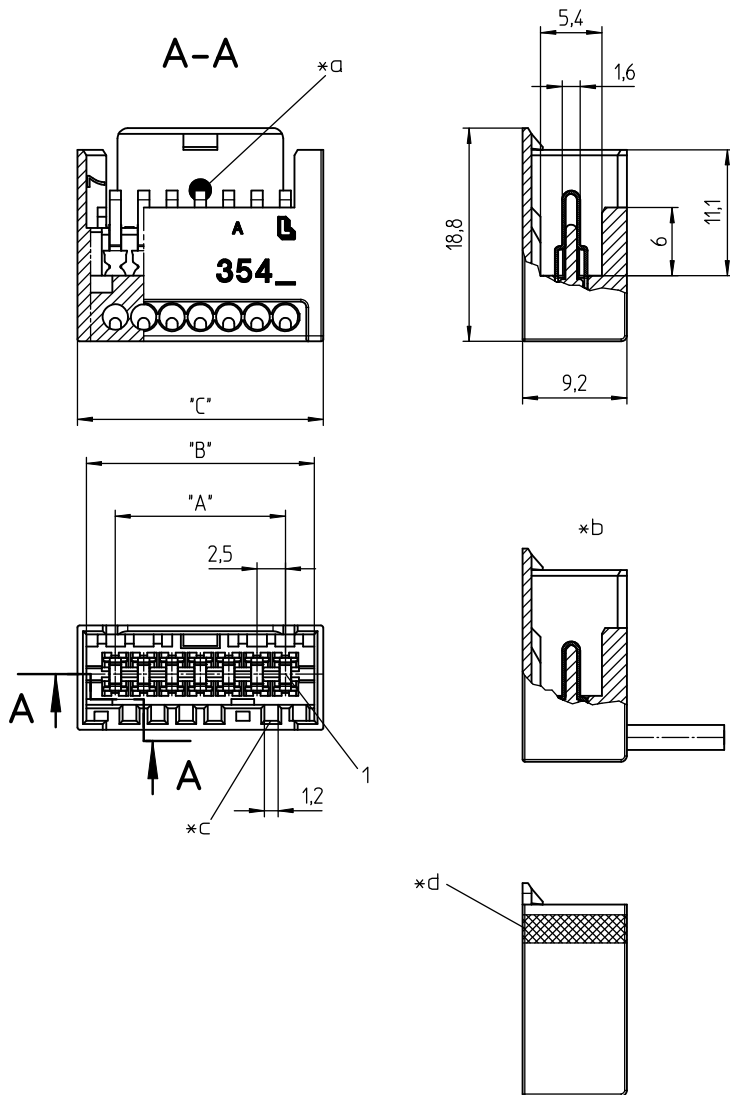
---

State: Active

---

Approvals:  

---



- \*a blue color marking on 3541-1 (M...)S01
- \*b terminated connector
- \*c keying
- \*d space for customer-specific color marking

#### Environmental conditions

Temperature range -40 °C/+130 °C<sup>1</sup>

<sup>1</sup> upper limit temperature (insulating body) RTI (electrical) of the UL Yellow Card

#### Materials

Insulating body PA GF, V-0 according to UL94<sup>1</sup>

Contact pin CuSn, tin-plated

<sup>1</sup> component glow wire resistant acc. to IEC 60695-2-11 and IEC 60335-1 respectively (GWT 750 °C without flame)

#### Mechanical data

Keying proposals at [www.lumberg.com](http://www.lumberg.com) 

#### Connectable conductors for IDT area

Construction discrete conductor, notched flat cable 2.5 mm

Section min. 0,34 mm<sup>2</sup>

Section max. 0,50 mm<sup>2</sup>

Insulation diameter ≤ 2,2 mm

Approved cables at [www.lumberg.com](http://www.lumberg.com) 

#### Electrical data (at T<sub>amb</sub> 20 °C)

Rated current 4 A (T<sub>v</sub> 60 °C)  
2 A (T<sub>v</sub> 100 °C)

Rated voltage 32 V AC

Material group IIIa (IEC)/2 (UL) (CTI ≥ 250)

Creepage distance ≥ 0,53 mm

Clearance ≥ 0,53 mm


Insulation resistance > 1 GΩ

#### Associated products

Counterparts


 3521


 3521-2

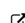
 352100

Harnessing equipment

 HA3...e

 HA354e-ST

 HZ354

 KHP3541/42-1-SW

 VARICON 7000-RD

Designation	Pole Number	PU (Pieces)	MDQ (Pieces)	Dimensions		
				A (mm)	B (mm)	C (mm)
3541-1 02	2	500	1000	2.5	7.6	9.2
3541-1 03	3	500	1000	5.0	10.1	11.7
3541-1 04	4	500	1000	7.5	12.6	14.2
3541-1 05	5	500	1000	10.0	15.1	16.7
3541-1 06	6	500	1000	12.5	17.6	19.2
3541-1 07	7	500	1000	15.0	20.1	21.7
3541-1 08	8	500	1000	17.5	22.6	24.2
3541-1 09	9	500	1000	20.0	25.1	26.7
3541-1 10	10	500	1000	22.5	27.6	29.2
3541-1 11	11	500	1000	25.0	30.1	31.7
3541-1 12	12	500	1000	27.5	32.6	34.2
3541-1 13	13	500	1000	30.0	35.1	36.7
3541-1 14	14	500	1000	32.5	37.6	39.2
3541-1 15	15	500	1000	35.0	40.1	41.7
3541-1 16	16	500	1000	37.5	42.6	44.2
3541-1 17	17	500	1000	40.0	45.1	46.7
3541-1 18	18	500	1000	42.5	47.6	49.2
3541-1 19	19	500	1000	45.0	50.1	51.7
3541-1 20	20	500	1000	47.5	52.6	54.2

Designation to be completed by further details (e.g. for keying, color or material options).

**Packaging:**

in bulk, in a cardboard box – in bar stock carriers upon request