

# Customer Information Sheet

DRAWING No.: M50-353XX42

SHEET 2 OF 2

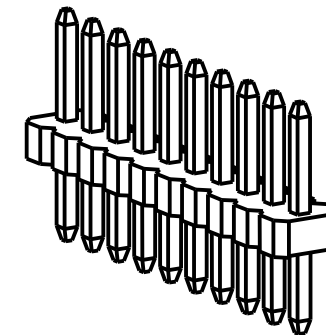
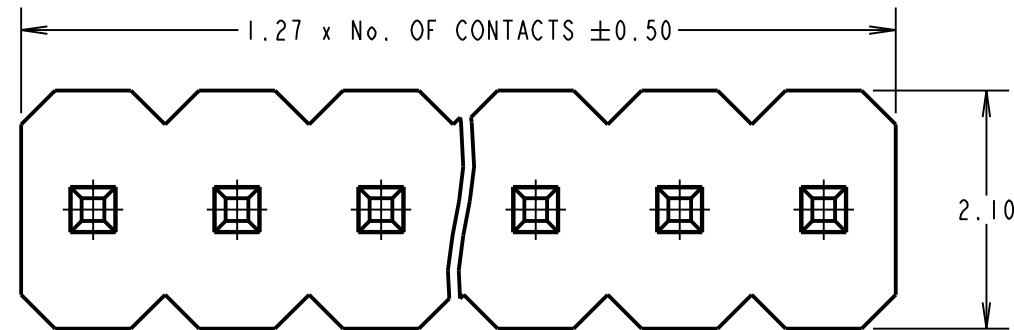
IF IN DOUBT - ASK

©

NOT TO SCALE

THIRD ANGLE PROJECTION

ALL DIMENSIONS IN mm



**SPECIFICATION:**

**MATERIAL:**  
 MOULDING = PA9T, UL94V-0, BLACK  
 CONTACT = BRASS  
 FINISH = 0.76-1.52 $\mu$  NICKEL ALL OVER,  
 0.012 $\mu$  MIN GOLD ON CONTACT AREA,  
 2.54-5.08 $\mu$  100% TIN ON TAILS

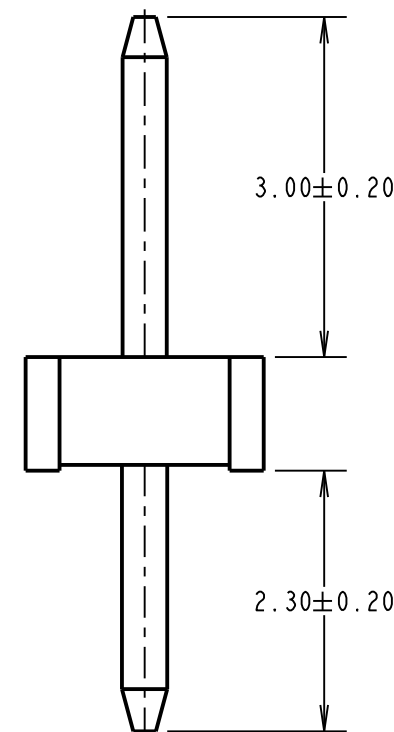
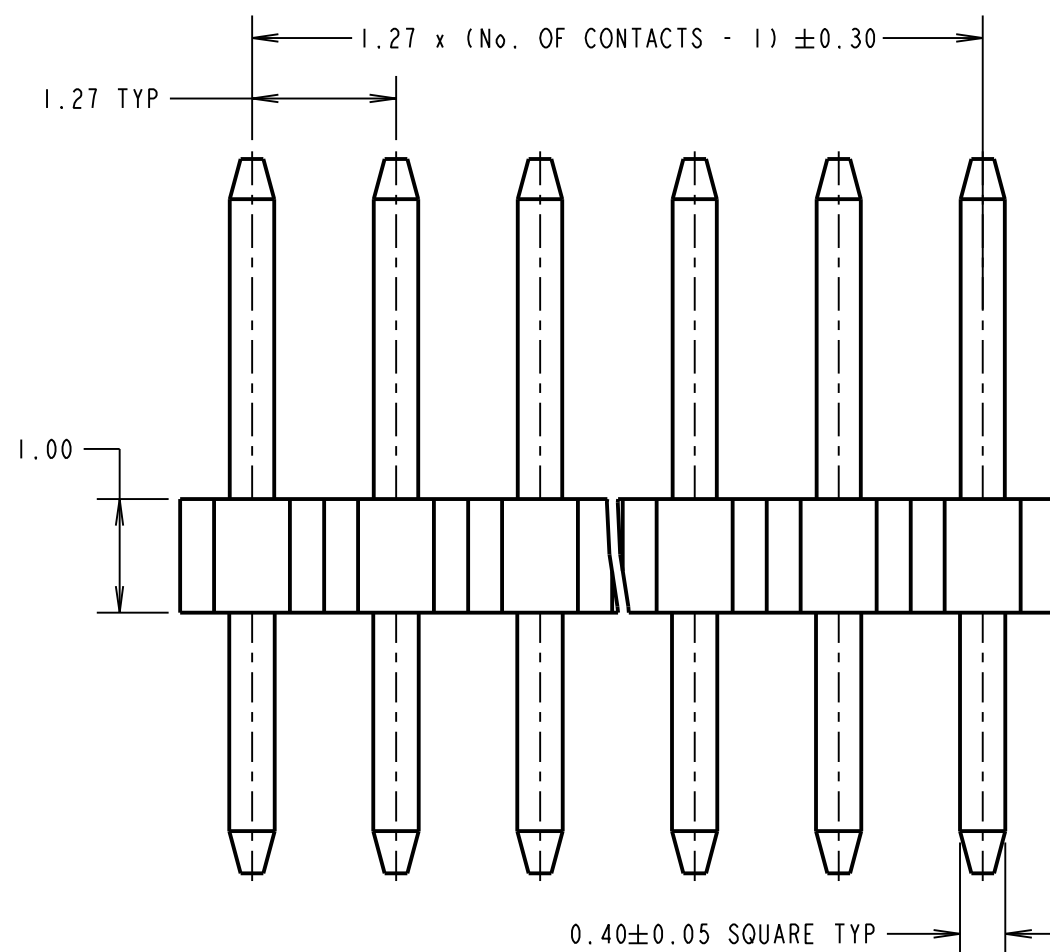
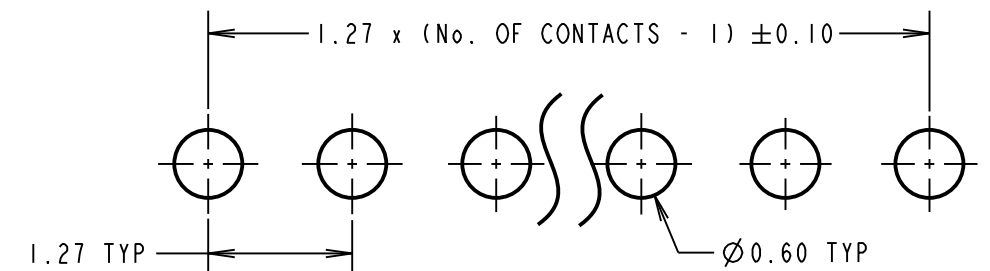
**ELECTRICAL:**  
 CURRENT RATING = 1A  
 CONTACT RESISTANCE = 20m $\Omega$  MAX  
 INSULATION RESISTANCE = 1000M $\Omega$  MAX  
 VOLTAGE PROOF = 500V AC FOR ONE MINUTE

**MECHANICAL:**  
 DURABILITY = 500 CYCLES

**ENVIRONMENTAL:**  
 OPERATING TEMPERATURE = -40°C TO +105°C

**PACKING:**  
 BOX  
 FOR COMPLETE SPECIFICATION, SEE COMPONENT SPECIFICATION C029XX (LATEST ISSUE)

**RECOMMENDED PCB LAYOUT**  
 (TOLERANCE =  $\pm 0.05$ )



ORDER CODE:  
**M50-353XX42**  
 No. OF CONTACTS: \_\_\_\_\_  
 02 TO 06, 08, 10, 20

MSP	2	30.09.16	20117
NAME	ISS.	DATE	C/NOTE
APPROVED:		M.PERREN	
CHECKED:		S.BENNETT	
DRAWN:		M.PERREN	
CUSTOMER REF.:			
ASSEMBLY DRG:			

**HARWIN**

www.harwin.com  
 technical@harwin.com

THIS DRAWING AND ANY INFORMATION OR DESCRIPTIVE MATTER SET OUT HEREON ARE CONFIDENTIAL AND COPYRIGHT PROPERTY OF THE HARWIN GROUP AND MUST NOT BE DISCLOSED, LOANED, COPIED OR USED FOR MANUFACTURING, TENDERING OR FOR ANY OTHER PURPOSE WITHOUT THEIR WRITTEN PERMISSION.

**TOLERANCES**  
 X. =  $\pm 1$ mm  
 X.X =  $\pm 0.25$ mm  
 X.XX =  $\pm 0.10$ mm  
 X.XXX =  $\pm 0.01$ mm  
 ANGLES =  $\pm 5^\circ$   
 UNLESS STATED

**MATERIAL:**  
 SEE ABOVE  
**FINISH:** SEE ABOVE  
**S/AREA:** mm<sup>2</sup>

**TITLE:**  
 1.27mm PITCH, SIL VERTICAL PIN HEADER  
**DRAWING NUMBER:**  
**M50-353XX42**  
 SHT 2 OF 2