



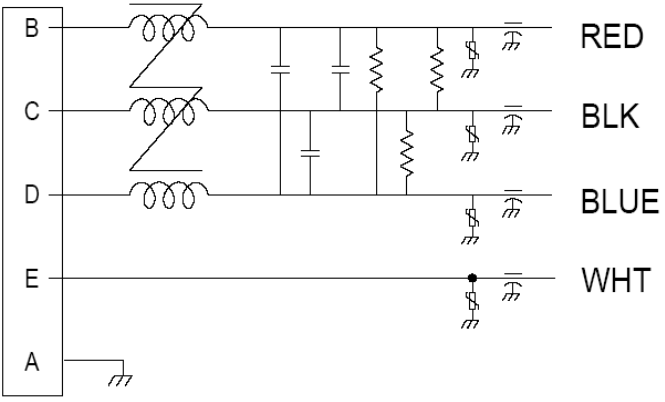
ZF-1954-15

The ZF1954-15 is ideal for the military and TEMPEST environments.

The ZF-1954-15 filter is configured to work with systems that need to meet MIL-STD-461C. The filter has an integral MIL connector for a secure, "through chassis", installation.

This filter features a compact configuration and 60 db insertion loss to 1.0 GHz.

With a slight internal circuit change this filter can be adapted to function in the MIL-STD 461D,E and F environments.



Operating Voltage = _____ 115/220 Vac
 Operating Current Max = _____ 15.0 Amp
 Operating Frequency = _____ 50 - 400 Hz
 Operating Temperature = _____ -40° - 55°C

Diel. Withstand (Line - Case) = _____ 1500V~ for 1 Min

Leakage Current = _____ 2.3 mA @ 250 VAC, 60Hz

Varistor Voltage Activation = _____ 389 - 473 Volts
 Residual Voltage after 1.0 sec. = _____ 34 V Max.

Calculated MTBF = _____ 1,274,000 Hrs @ 30°C GB

