

P/N LEGEND

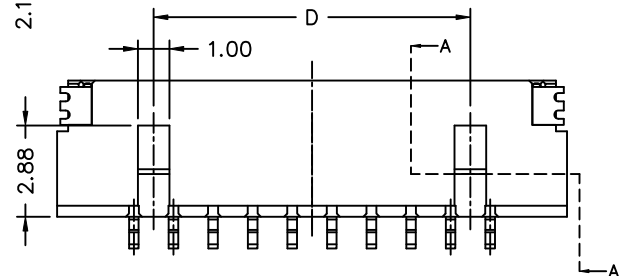
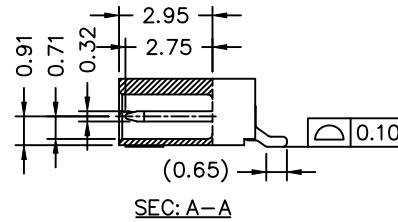
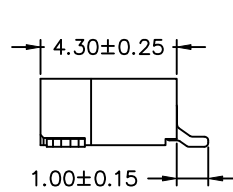
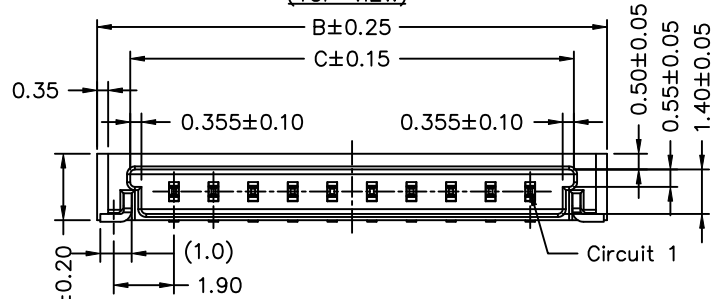
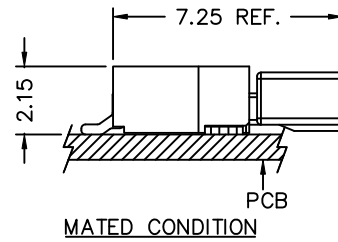
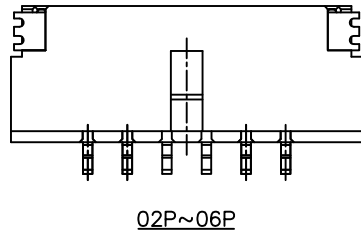
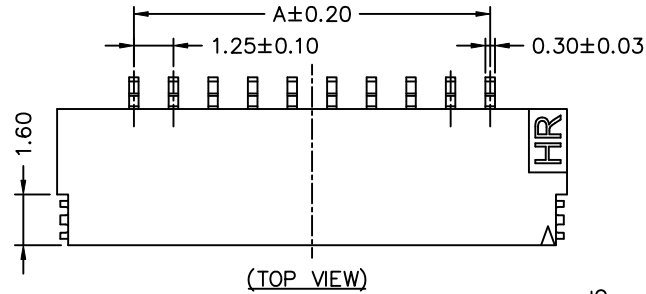
A1255	WR	-S	-XP	N	L	N	XX	X	00	R
①	②	③	④	⑤	⑥	⑦	⑧	⑨	⑩	⑪

① Series No.  
 ② Connector type: WR=Right angle  
 ③ Mounting type: S=SMT  
 ④ No. of circuits  
 ⑤ N=Halogen Free  
 ⑥ Material: L=LCP-V0  
 ⑦ Color: N=Natural(Beige)  
 ⑧ Plating code for contacts:  
 G2=Gold-plated 3u", T1=Matte Tin-plated  
 ⑨ Plating code for solder tabs:  
 G=Gold-flash, T=Matte Tin-plated  
 ⑩ Option code: 00=Standard  
 ⑪ Packing code: R=Tape & Reel

SPECIFICATIONS

Current Rating: 1A AC,DC  
 Voltage Rating: 200V AC,DC  
 Temperature Range: -25°C ~ +85°C  
 Contact Resistance: 40mΩ Max.  
 Insulation Resistance: 100MΩ Min.  
 Withstanding Voltage: 500V AC/minute  
 Pin Material: Phosphor Bronze  
 Solder Tabs: Phosphor Bronze

Circuit No.	Dimensions			
	A	B	C	D
02P	1.25	6.10	4.01	----
03P	2.50	7.35	5.26	----
04P	3.75	8.60	6.51	----
05P	5.00	9.85	7.76	----
06P	6.25	11.10	9.01	----
07P	7.50	12.35	10.26	7.50
08P	8.75	13.60	11.51	8.75
10P	11.25	16.10	14.01	10.00
11P	12.50	17.35	15.26	11.25
12P	13.75	18.60	16.51	12.50
13P	15.00	19.85	17.76	13.75
14P	16.25	21.10	19.01	15.00
15P	17.50	22.35	20.26	16.25
20P	23.75	28.60	26.51	22.50
25P	30.00	34.85	32.76	28.75
30P	36.25	41.10	39.01	35.00



				燦達電子工業股份有限公司 JOINT TECH ELECTRONIC IND. CO., LTD.	
		UNIT	SCALE	SHEET	TITLE:
		mm	1 : 1	1 of 2	1.25mm PITCH 90° WAFER-SMT TYPE, ULTRA LOW PROFILE
		DRAWN BY 陳錦展 2012.09.20	APPROVED BY 董正一 2012.09.20		
		GENERAL TOLERANCE			DRAW NO. : A1255WR-S-XPXXXXXXX
A2	EN1511090005	2015.11.10	劉建芳	X.X±0.25	
A1	EN1307020224	2013.06.19	周傑亮	X.XX±0.15	
A0	NEW RELEASE	2012.09.20	陳錦展	X.XXX±0.05	
REV.	DESCRIPTION	DATE	NAME	ANGLE±	REV. A2