

ATLANTIC VERSION TERMINATOR INTERFACE ADAPTER	PART NUMBER	REVISION	DESCRIPTION	FEED TYPE	APPLICATOR STYLE CONVERSION CHART						
					CONVERT TO	PART NUMBERS REQUIRED					
						2119950-1	2119792-2	8-2150224-5	2119641-1	2063440-2	2168400-7 (QUANTITY 2)
	2150224-1	B	FINE CRIMP HEIGHT ADJUST	MECHANICAL	PNEUMATIC FEED	2119950-1	2119792-2	-	2119641-1	-	2063440-2
					SERVO LATCH PLATE	2119951-1	1901697-1	8-2150224-5	-	-	2168400-7 (QUANTITY 2)
					SMART APPLICATOR	2161326-1	-	8-2150224-4	-	-	-
	2150224-2	B	FINE CRIMP HEIGHT ADJUST	PNEUMATIC	MECHANICAL FEED	2119949-1	2063961-1	5-18022-5	2119653-1	-	-
					SERVO LATCH PLATE	2119951-1	1901697-1	8-2150224-5	-	-	2168400-7 (QUANTITY 2)
					SMART APPLICATOR	2161326-1	-	8-2150224-4	-	-	-
2150224-5	B	FINE CRIMP HEIGHT ADJUST	SERVO LATCH PLATE	MECHANICAL FEED	2119949-1	2063961-1	5-18022-5	2119653-1	-	-	
				PNEUMATIC FEED	2119950-1	2119792-2	-	2119641-1	-	2063440-2	
2150224-6	B	NON-CRIMP HEIGHT ADJUST	SERVO LATCH PLATE	-	-	-	-	-	-	-	
2150224-7	B	FINE CRIMP HEIGHT ADJUST	NONE	-	-	-	-	-	-	-	
7-2150224-7	A	CRIMP TOOLING KIT	-	-	-	-	-	-	-	-	

APPLICATOR DATA		
CRIMP	SIZE	TYPE
WIRE	2.79 mm [.110]	F
INSUL	3.56 mm [.140]	OV
APPL INSTRUCTIONS 408-10390		

TERMINAL DATA: TE TERMINAL TE CRIMP SPECIFICATION	
TERMINAL NAME: .312 SRS FASTIN-ON RECEPTACLE	
WIRE STRIP LENGTH 4.80-5.60 mm [.189-.220 IN]	INSULATION DIAMETER RANGE ∅2.10-3.10 mm [.083-.122 IN]
TERMINAL APPLICATION SPECIFICATION 114-3118	
TERMINALS APPLIED	
TE TERMINAL 160863-1	TE TERMINAL 160863-2

WIRE SIZE	CRIMP HEIGHT mm [INCH]	CRIMP HEIGHT REFERENCE SETTING
2.50mm2	2.04 +/- 0.05 [.080 +/- .002]	5.5
2.00mm2	1.90 +/- 0.05 [.075 +/- .002]	7.2
1.50mm2	1.76 +/- 0.05 [.069 +/- .002]	8.6

- RECOMMENDED SPARE PARTS
- GREASE BEARING SURFACES LIGHTLY
- 3. LUBRICATE DAILY PER THE APPLICATOR INSTRUCTION SHEET SUPPLIED WITH THE APPLICATOR.
- APPLICATOR SPECIFIC DATA TO BE ENTERED INTO BLANK MEMORY CHIP AT ASSEMBLY. SEE BELOW FOR PART NUMBER:  
 MECHANICAL FEED WITH "SMART APPLICATOR" CONVERSION: 8-2150224-4  
 PNEUMATIC FEED WITH "SMART APPLICATOR" CONVERSION: 8-2150224-4  
 SERVO FEED WITH "FINE CRIMP HEIGHT ADJUST": 8-2150224-5  
 SERVO FEED WITH "NON-CRIMP HEIGHT ADJUST": 8-2150224-6
- 5. ADJUSTMENT OF THE STRIPPER MAY BE REQUIRED WHEN MOVING THE APPLICATOR BETWEEN BENCH AND LEADMAKER APPLICATIONS.
- APPLY PART NUMBER 1-23419-5 LOCTITE TO THREADS OF ITEMS 50, 62 & 242. FOR -6 ONLY APPLY PART NUMBER 1-23419-5 LOCTITE TO THREADS OF ITEMS 37, 50 & 242.
- GREASE THREADS, GROOVE AND O-RING ON ITEMS 35 & 252.
- MAGNET, ITEM 166 MUST BE ORIENTED CORRECTLY IN ORDER TO PROPERLY ACTUATE THE COUNTER.
- CRIMP HEIGHT REFERENCE SETTING WAS THE SETTING USED WHEN THE APPLICATOR WAS QUALIFIED AT THE FACTORY. ADJUSTMENT MAY BE NECESSARY WHEN RUNNING APPLICATOR IN THE FIELD.
- SPARE FEED CAM STORAGE LOCATION REFER TO INSTRUCTION SHEET FOR ADDITIONAL INFORMATION.
- THE RECOMMENDED SET-UP FOR END FEED APPLICATORS IS POST-FEED WITH ITEM 2119653-1. THE APPLICATOR CAN BE CONFIGURED FOR PRE-FEED WITH ITEM 2119652-1 BUT MAY ENCOUNTER PROBLEMS WITH SOME APPLICATIONS. FEED ISSUES OR TERMINAL JAMMING MAY OCCUR IN THE PRE-FEED CONFIGURATION.

**\*WARNING**  
ON INSTALLATION, SET WIRE DISC, ITEM 40 TO LARGEST WIRE SIZE SETTING. USE OF SETTINGS BELOW MINIMUM REQUIRED CRIMP HEIGHT SETTING WILL CAUSE DAMAGE TO CRIMP TOOLING.

-77	-7	-6	-5	-2	-1	PART NO	DESCRIPTION	ITEM NO
-	-	1	-	-	-	2119957-2	APPLICATOR SHIM PACK	260
-	1	-	1	1	1	8-21084-0	O-RING, .676 ID, .070 DIA. MAT.	252
-	-	-	-	1	-	2119640-1	PUSH ROD, AIR FEED	250
-	-	-	-	-	1	2079988-1	BUSHING, LCH5-12, MISUMI	249
-	-	-	-	1	-	2119641-1	FEED CAM, AIR FEED	248
-	1	-	1	1	1	2119798-1	DETENT PIN	247
-	1	-	1	1	1	1-22279-3	SPRING, COMPRESSION	246
-	-	1	-	-	-	2119759-1	RAM, AMP STYLE, END FEED, NON-ADJUST	245

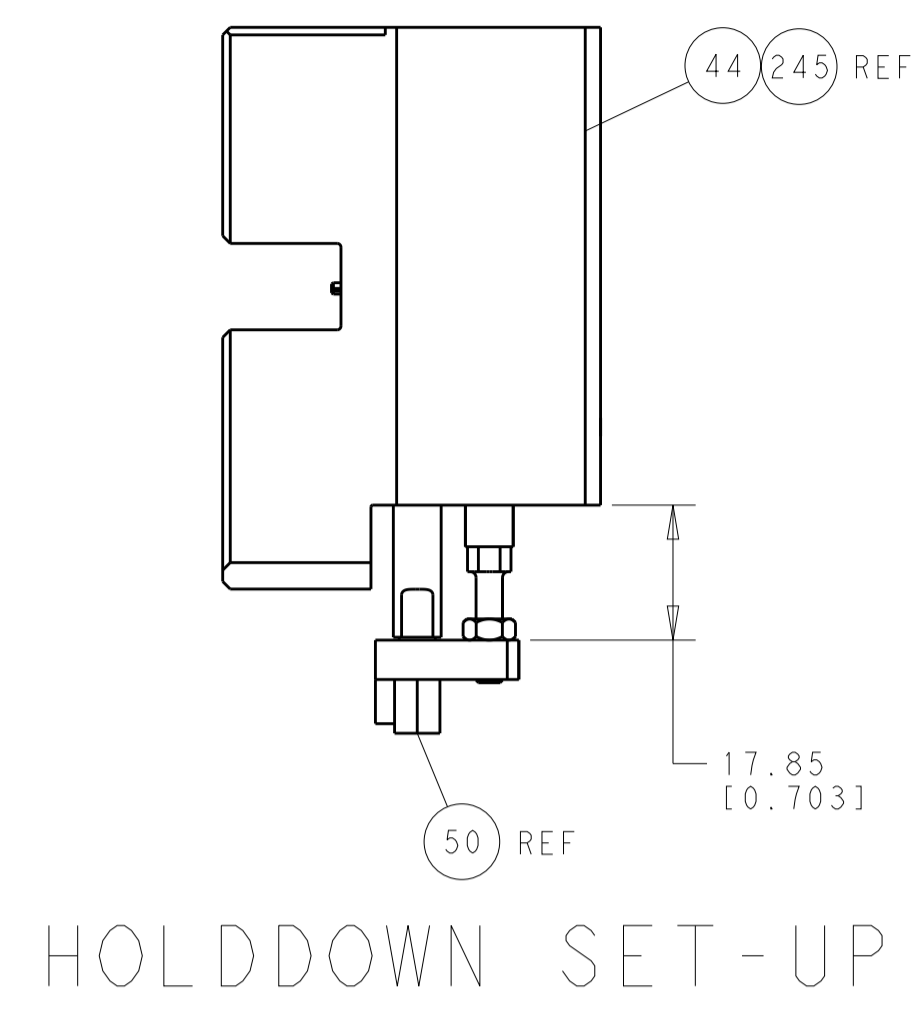
ATLANTIC VERSION  
Shown on sheets 1 of 4 & 2 of 4  
(Pacific version shown on sheets 3 of 4 & 4 of 4)

SET UP GAUGE 2119599-2			LOC	DIST	REVISIONS		
A	A	66					
REV	LTN	DESCRIPTION	DATE	OWN	APPD		
1		ORIGINAL	20DEC2011	GH	TE		
A		RELEASED	01MAR2012	GH	TE		
B		ECR-13-012621	YY	UG	-		

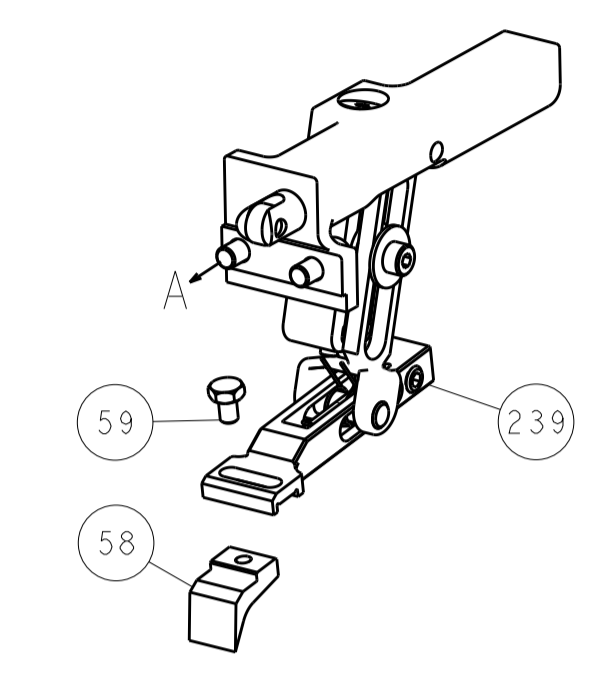
REV	LTN	DESCRIPTION	DATE	OWN	APPD	ITEM NO
-	1	1	1	1	1	2119082-9
-	1	1	1	1	1	2079764-1
-	1	1	1	1	1	2119083-1
-	-	2	2	-	-	2168400-7
-	-	-	-	1	-	2119580-1
-	-	-	-	1	-	2063440-2
-	-	1	1	-	-	2119740-2
-	-	REFREF	-	-	-	1901697-1
-	1	1	1	1	1	6-993111-6
-	1	1	1	1	1	8-22280-7
-	1	1	1	1	1	1752353-2
-	1	1	1	1	1	1901680-2
-	-	-	-	2	-	21045-3
-	1	1	1	1	1	994969-1
-	REFREF	REFREF	REFREF	REFREF	REFREF	994970-2
-	-	-	-	1	-	240638-1
-	-	-	-	1	-	3-23627-7
-	REFREF	REFREF	REFREF	REFREF	REFREF	SEE NOTE 4
-	-	1	1	-	-	1633743-1
-	1	1	1	1	1	455888-4
-	1	1	1	1	1	2119956-2
-	2	2	2	2	2	2-18032-2
-	1	-	-	1	1	2119740-1
-	2	2	2	2	2	2168078-1
-	1	1	1	1	1	1901681-1
-	2	2	2	2	2	2168400-5
-	1	-	-	1	1	2119793-1
	3	-	3	3	3	992763-5
-	1	1	1	1	1	2079383-4
-	-	-	-	1	-	5-18022-5
-	-	-	-	-	1	2063961-1
	3	3	3	3	3	2168400-4
	2	2	2	2	2	2168083-8
-	2	2	2	2	2	5018030-2
-	2	2	2	2	2	5018030-1
-	2	2	2	2	2	986965-8
-	1	1	1	1	1	1-5018030-0
	-	-	-	1	-	2119792-2
-	1	1	1	1	1	1-1752354-3
-	-	-	-	-	1	18023-9
-	-	-	-	-	1	2119652-1
-	-	-	-	-	1	2119653-1
-	1	1	1	1	1	2119655-5
-	1	-	-	1	1	2119369-1
-	1	1	1	1	1	2079383-7
-	1	-	-	1	1	2119645-1
-	1	-	-	1	1	2119957-1
	1	1	1	1	1	2119644-2
	1	1	1	1	1	2119085-1
-	1	-	-	1	1	2119092-1
-	7	7	7	7	7	1-18028-2
-	2	2	2	2	2	2168083-9
-	2	2	2	2	2	2168083-2
-	1	1	1	1	1	690455-2
-	2	2	2	2	2	1320906-1
-	1	1	1	1	1	1752371-3
-	1	1	1	1	1	240825-1
-	2	2	2	2	2	2-22281-3
-	1	1	1	1	1	1752373-4
-	2	2	2	2	2	1901259-6
-	4	4	4	4	4	1-2079383-1
-	1	1	1	1	1	3-240641-0
-	1	1	1	1	1	1752360-1
	1	1	1	1	1	240833-4
-	-	-	-	-	-	-
	1	1	1	1	1	690482-5
	1	1	1	1	1	1-1333219-5
	1	1	1	1	1	2217206-8
	1	1	1	1	1	3-240641-2
-	1	1	1	1	1	238009-3
	1	1	1	1	1	1-2119785-7
-	1	1	1	1	1	455888-9
	1	1	1	1	1	6-456408-6

DIMENSIONS: mm		TOLERANCES UNLESS OTHERWISE SPECIFIED:		DWG: HOFFNER 20DEC2011 CHK: T.ELBIN 21DEC2011 APPD: T.ELBIN 21DEC2011	
0 PLC ±.1		1 PLC ±.13		NAME: Ocean End Feed Applicator	
2 PLC ±.25		3 PLC ±.5		SIZE: A	
4 PLC ±.0001		ANGLES ±.001		CAGE CODE: 00779	
FINISH: -		MATERIAL: -		DRAWING NO: 2150224	
WEIGHT: -		SCALE: 1:1		SHEET 1 OF 4	
Customer Accessible Production Drawing		RESTRICTED TO: -		REV: B	

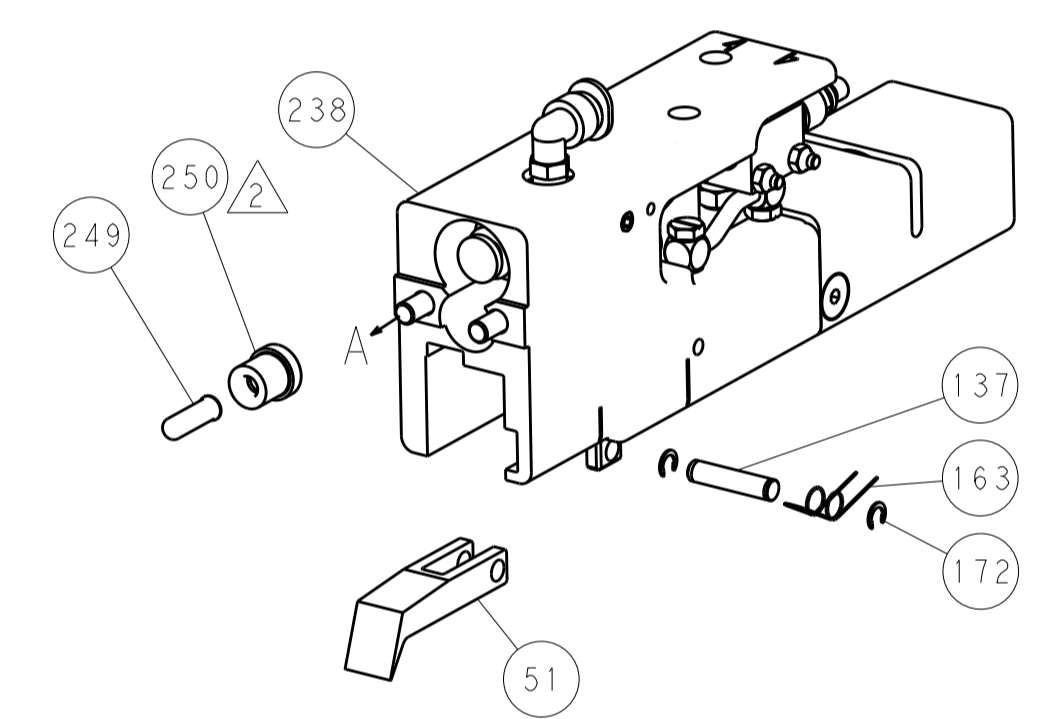
LOC		DIST		REVISIONS			
A	66	P	LTM	DESCRIPTION	DATE	OWN	APVD
		-	-	SEE SHEET 1			



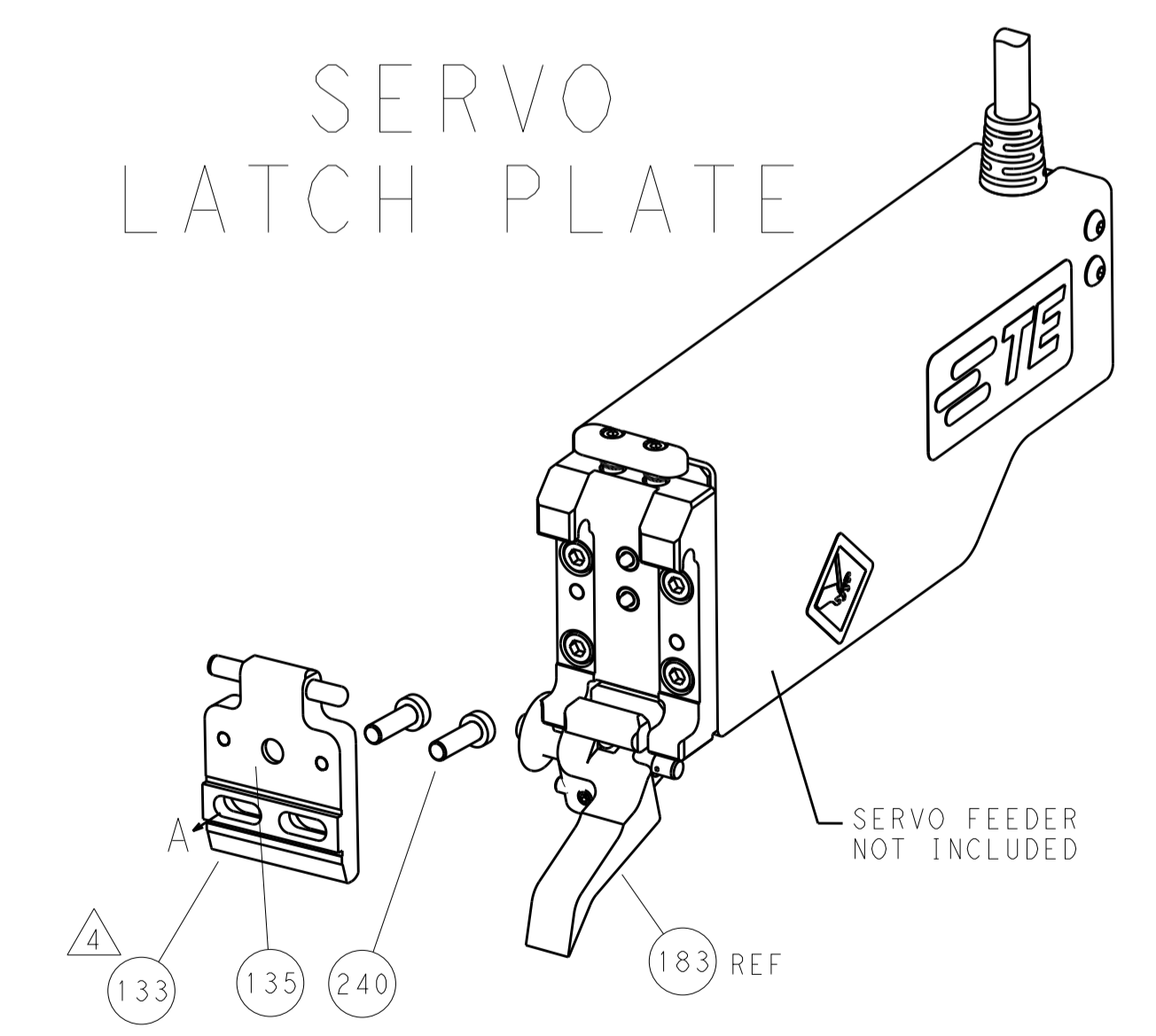
### FEED TYPE MECHANICAL



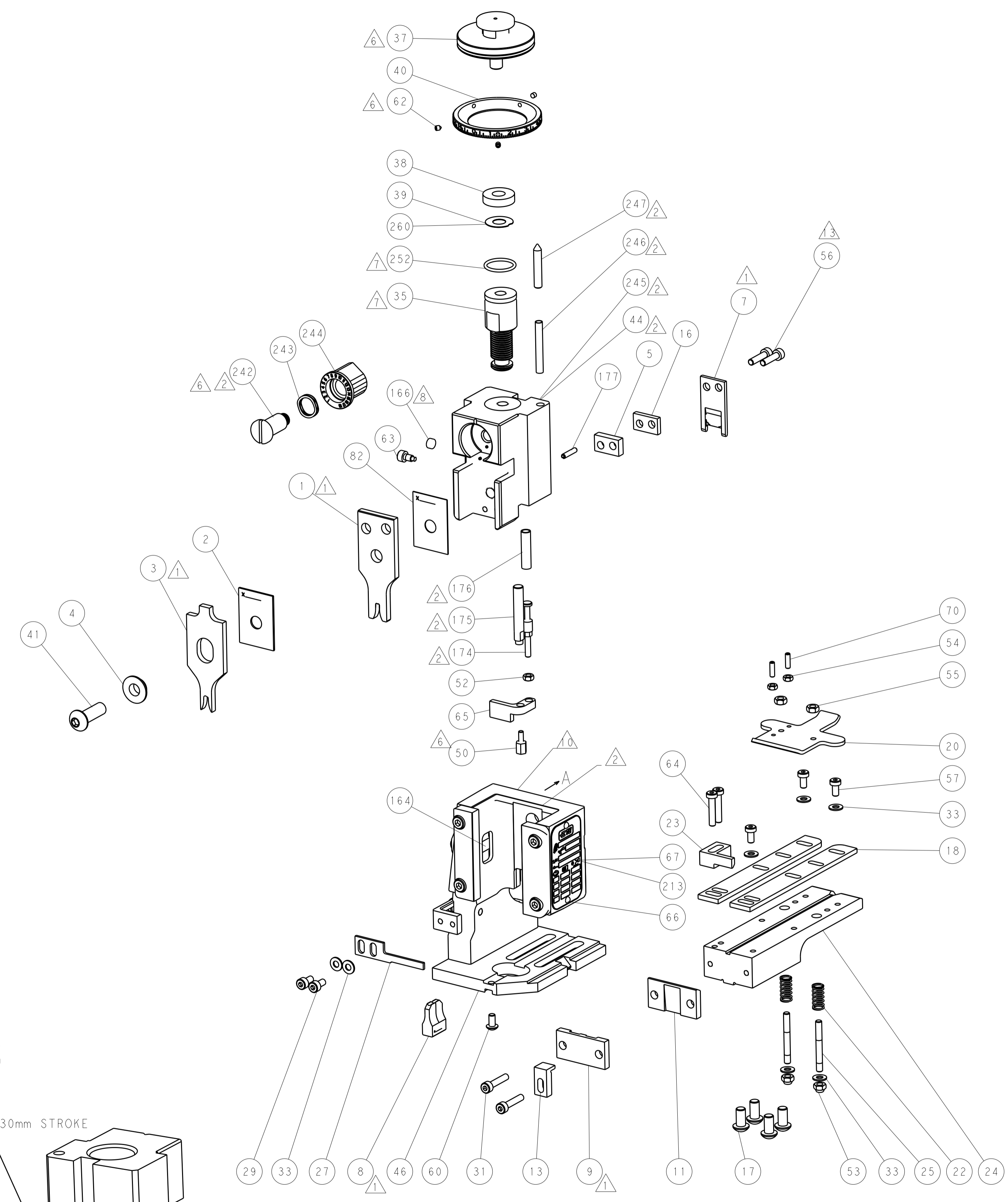
### PNEUMATIC



### SERVO LATCH PLATE



### CAM POSITIONS



**ATLANTIC VERSION**  
 Shown on sheets 1 of 4 & 2 of 4  
 (Pacific version shown on sheets 3 of 4 & 4 of 4)

DIMENSIONS:		TOLERANCES UNLESS OTHERWISE SPECIFIED:		OWN: HOFFNER Z0DEC2011		TE Connectivity	
mm		0 PLC ±0.5		CHK: T. ELBIN 21DEC2011		Harrisburg, PA 17105-3608	
Ø		1 PLC ±0.5		APVD: T. ELBIN 21DEC2011		NAME: Ocean End Feed Applicator	
H		2 PLC ±0.13		PRODUCT SPEC:		SIZE: CAGE CODE DRAWING NO. RESTRICTED TO	
D		3 PLC ±0.013		APPLICATION SPEC:		A11 00779 ©=2150224	
R		4 PLC ±0.001		WEIGHT:		SCALE: 1:1 SHEET 2 OF 4 REV B	
ANGLES		±0.001		MATERIAL:		Customer Accessible Production Drawing	
FINISH:		-		-		-	

PACIFIC VERSION TERMINATOR INTERFACE ADAPTER	PART NUMBER	REVISION	DESCRIPTION	FEED TYPE	APPLICATOR STYLE CONVERSION CHART						
					CONVERT TO	PART NUMBERS REQUIRED					
	2-2150224-1	B	FINE CRIMP HEIGHT ADJUST	MECHANICAL	PNEUMATIC FEED	2119950-1	2119792-2	-	2119641-2	-	2063440-2
					SERVO LATCH PLATE	2119951-1	1901697-1	8-2150224-5	-	-	2168400-7 (QUANTITY 2)
					SMART APPLICATOR	2161326-1	-	8-2150224-4	-	-	-
	2-2150224-2	B	FINE CRIMP HEIGHT ADJUST	PNEUMATIC	MECHANICAL FEED	2119949-1	2063961-1	5-18022-5	2119653-2	-	-
					SERVO LATCH PLATE	2119951-1	1901697-1	8-2150224-5	-	-	2168400-7 (QUANTITY 2)
					SMART APPLICATOR	2161326-1	-	8-2150224-4	-	-	-
	2-2150224-5	B	FINE CRIMP HEIGHT ADJUST	SERVO LATCH PLATE	MECHANICAL FEED	2119949-1	2063961-1	5-18022-5	2119653-2	-	-
					PNEUMATIC FEED	2119950-1	2119792-2	-	2119641-2	-	2063440-2
	2-2150224-7	B	FINE CRIMP HEIGHT ADJUST	NONE	-	-	-	-	-	-	-
	7-2150224-7	A	CRIMP TOOLING KIT	-	-	-	-	-	-	-	-

APPLICATOR DATA		
CRIMP SIZE	TYPE	
WIRE 2.79 mm [ .110 ]	F	
INSUL 3.56 mm [ .140 ]	OV	
APPL INSTRUCTIONS 408-10390		

TERMINAL DATA: TE TERMINAL		TE CRIMP SPECIFICATION
TERMINAL NAME: .312 SRS FAST-IN-ON RECEPTACLE		
WIRE STRIP LENGTH 4.80-5.60 mm [ .189-.220 IN ]		INSULATION DIAMETER RANGE Ø2.10-3.10 mm [ .083-.122 IN ]
TERMINAL APPLICATION SPECIFICATION 114-3118		
TERMINALS APPLIED		
TE TERMINAL 160863-1	TE TERMINAL 160863-2	

WIRE SIZE	CRIMP HEIGHT mm [INCH]	CRIMP HEIGHT REFERENCE SETTING
2.50mm2	2.04 +/- 0.05 [ .080 +/- .002 ]	5.5
2.00mm2	1.90 +/- 0.05 [ .075 +/- .002 ]	7.2
1.50mm2	1.76 +/- 0.05 [ .069 +/- .002 ]	8.6

- RECOMMENDED SPARE PARTS
- GREASE BEARING SURFACES LIGHTLY
- 3. LUBRICATE DAILY PER THE APPLICATOR INSTRUCTION SHEET SUPPLIED WITH THE APPLICATOR.
- APPLICATOR SPECIFIC DATA TO BE ENTERED INTO BLANK MEMORY CHIP AT ASSEMBLY. SEE BELOW FOR PART NUMBER:  
 MECHANICAL FEED WITH "SMART APPLICATOR" CONVERSION: 8-2150224-4  
 PNEUMATIC FEED WITH "SMART APPLICATOR" CONVERSION: 8-2150224-4  
 SERVO FEED WITH "FINE CRIMP HEIGHT ADJUST": 8-2150224-5
- 5. ADJUSTMENT OF THE STRIPPER MAY BE REQUIRED WHEN MOVING THE APPLICATOR BETWEEN BENCH AND LEADMAKER APPLICATIONS.
- APPLY PART NUMBER 1-23419-5 LOCTITE TO THREADS OF ITEMS 50, 62 & 242.
- GREASE THREADS, GROOVE AND O-RING ON ITEMS 139 & 153.
- MAGNET, ITEM 166 MUST BE ORIENTED CORRECTLY IN ORDER TO PROPERLY ACTUATE THE COUNTER.
- CRIMP HEIGHT REFERENCE SETTING WAS THE SETTING USED WHEN THE APPLICATOR WAS QUALIFIED AT THE FACTORY. ADJUSTMENT MAY BE NECESSARY WHEN RUNNING APPLICATOR IN THE FIELD.
- SPARE FEED CAM STORAGE LOCATION REFER TO INSTRUCTION SHEET FOR ADDITIONAL INFORMATION.
- THE RECOMMENDED SET-UP FOR END FEED APPLICATORS IS POST-FEED WITH ITEM 2119653-1. THE APPLICATOR CAN BE CONFIGURED FOR PRE-FEED WITH ITEM 2119652-1 BUT MAY ENCOUNTER PROBLEMS WITH SOME APPLICATIONS. FEED ISSUES OR TERMINAL JAMMING MAY OCCUR IN THE PRE-FEED CONFIGURATION.
- CUT TO LENGTH AT ASSEMBLY.

**\*WARNING**  
 ON INSTALLATION, SET WIRE DISC, ITEM 40 TO LARGEST WIRE SIZE SETTING. USE OF SETTINGS BELOW MINIMUM REQUIRED CRIMP HEIGHT SETTING WILL CAUSE DAMAGE TO CRIMP TOOLING.

	ITEM NO	DESCRIPTION	ITEM NO
- 1 1 1 1 1	2119782-1	FINE ADJUST HEAD ASM, PACIFIC STYLE	251
- - - 1 -	2119640-1	PUSH ROD, AIR FEED	250
- - - 1 -	2079988-1	BUSHING, LCH5-12, MISUMI	249
- 1 1 1 1 1	1-22279-3	SPRING, COMPRESSION	246
- 1 1 1 1 1	2119082-9	CAM, SNAIL, INSULATION ADJUSTMENT	244
- 1 1 1 1 1	2079764-1	WASHER, WAVE SPRING, CREST-TO-CREST	243
-77-27-25-22-21	PART NO	DESCRIPTION	ITEM NO

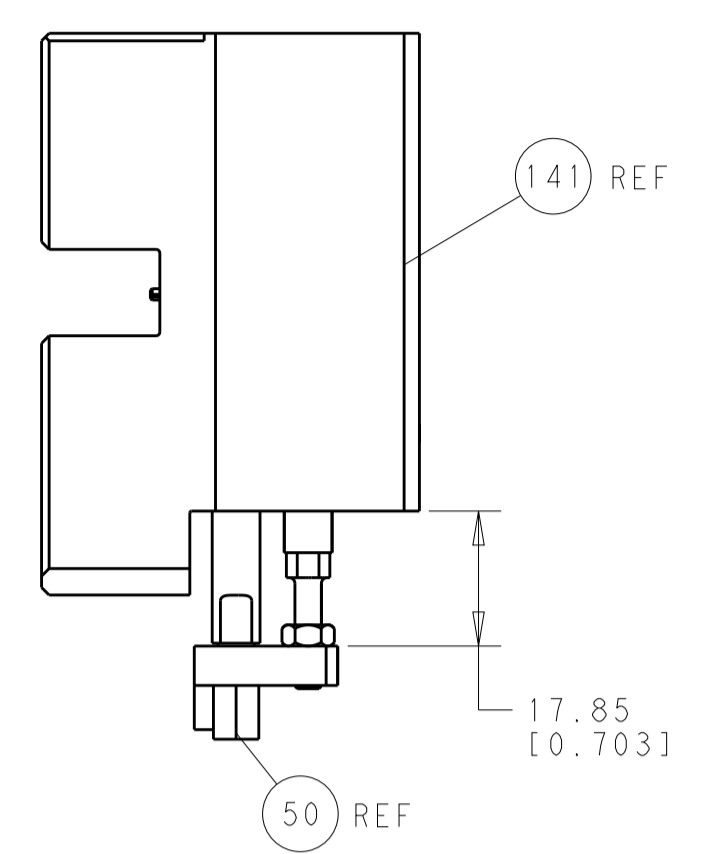
**PACIFIC VERSION**  
 Shown on sheets 3 of 4 & 4 of 4  
 (Atlantic version shown on sheets 1 of 4 & 2 of 4)

SET UP GAUGE	LOC	DIST	REVISIONS			
2119599-2	A	66	REV	DATE	BY	APPV
			-	SEE SHEET 1	-	-

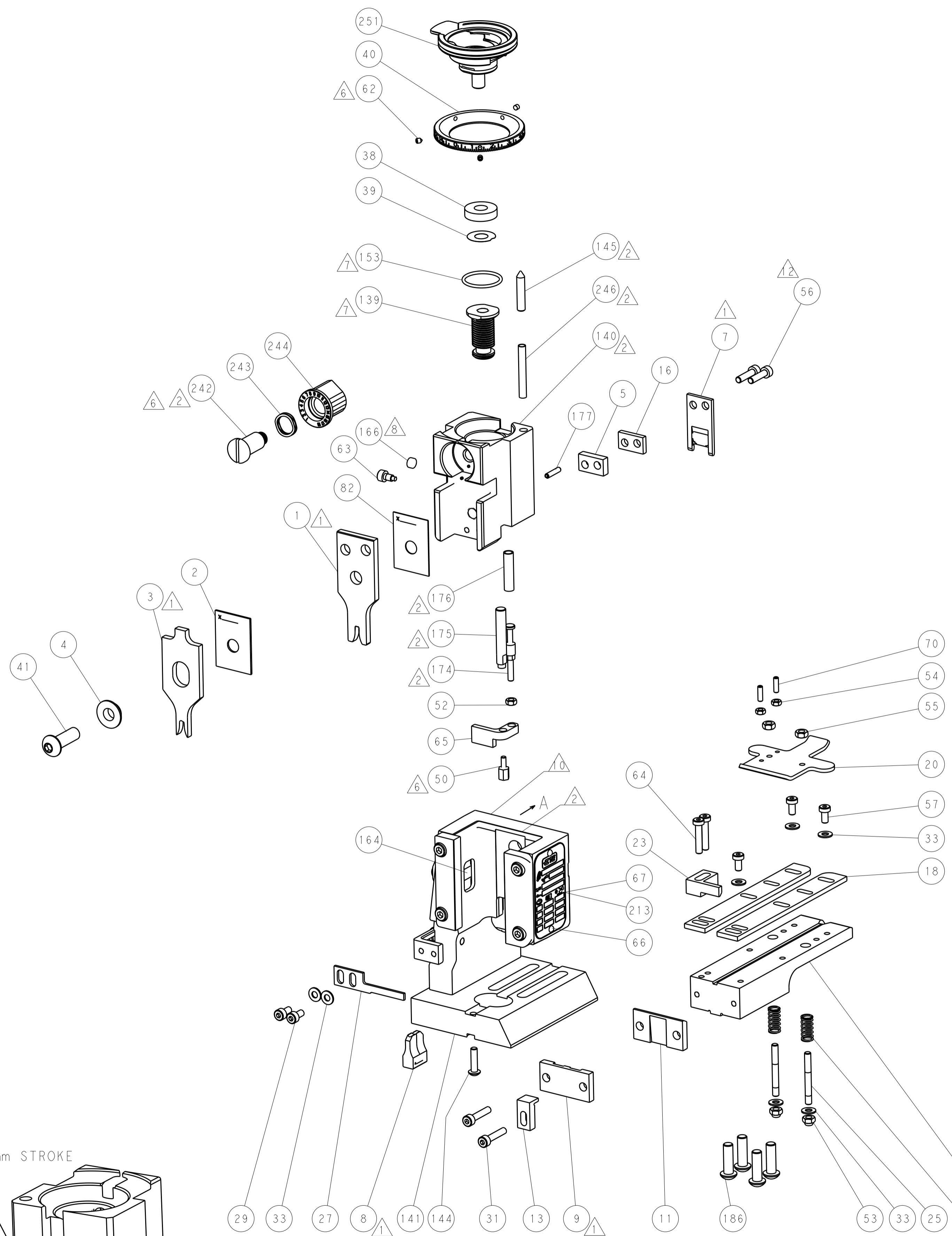
	- 1 1 1 1 1	2119083-1	RETAINER, INSULATION DIAL	242
	- - 2 - -	2168400-7	SHCS, LOW HEAD, RoHS, M5 X 10	240
	- - - 1 -	2119580-1	MECHANICAL FEED ASSEMBLY	239
	- - - 1 -	2063440-2	AIR FEED MODULE	238
	- - 1 - -	2119740-2	TAG, IDENTIFICATION	213
	- 4 4 4 4	2079383-9	SCR, BHSC, RoHS (M6 X 20)	186
	- - REF - -	1901697-1	FEED FINGER ASSEMBLY, EF	183
	- 1 1 1 1 1	6-993111-6	PIN, SLOTTED SPRING 3.0 X 14.0	177
	- 1 1 1 1 1	8-22280-7	SPRING, COMPRESSION	176
	- 1 1 1 1 1	1752353-2	GUIDE PIN, HOLDDOWN	175
	- 1 1 1 1 1	1901680-2	GUIDE PIN, HOLDDOWN	174
	- - - 2 -	21045-3	RING, RETAIN, EXTERN, 3/16 CRESCENT	172
	- 1 1 1 1 1	994969-1	MAGNET, RARE EARTH HIGH ENERGY	166
	- REFREFREFREF	994970-2	COUNTER, MAGNETIC	164
	- - - 1 -	240638-1	SPRING, FEED FINGER	163
	- 1 1 1 1 1	8-21084-1	O-RING, .801 ID, .070 DIA. MAT.	153
	- - - 1 -	2119641-2	FEED CAM, AIR FEED	152
	- 1 1 1 1 1	2119798-2	DETENT PIN	145
	- 1 1 1 1 1	2079383-8	SCR, BHSC, RoHS (M4 X 16)	144
	- - - - 1	2119653-2	FEED CAM, POST FEED	142
	- 1 1 1 1 1	2119655-6	APPLICATOR BASIC ASSEMBLY, EF	141
	- 1 1 1 1 1	2119651-1	RAM, ASIAN STYLE, END FEED	140
	- 1 1 1 1 1	2119092-2	BOLT, ADJUSTMENT	139
	- - - 1 -	3-23627-7	PIN, RETAIN, GRVD, 3/16 X .854	137
	- - REF - -	SEE NOTE 4	MEMORY CHIP, PROGRAMMED	135
	- - 1 - -	1633743-1	SERVO FEED LATCH ASM	133
	- 1 1 1 1 1	455888-4	SPACER, CRIMPER	82
	- 1 1 1 1 1	2119956-2	DOCUMENTATION PACKAGE	71
	- 2 2 2 2 2	2-18032-2	SCR, SET, FLT POINT M3 X 10.0	70
	- 1 - 1 1 1	2119740-1	TAG, IDENTIFICATION	67
	- 2 2 2 2 2	2168078-1	SCREW, DRIVE, RH, RoHS, 2 x .188	66
	- 1 1 1 1 1	1901681-1	HOLDDOWN, TERMINAL	65
	- 2 2 2 2 2	2168400-5	SHCS, LOW HEAD, RoHS, M4 X 20	64
	- 1 1 1 1 1	2119793-1	LIMITER, ADJUSTMENT BOLT	63
	- 3 3 3 3 3	992763-5	SCR, SET, SOC, CONE POINT, M3 X 4.0	62
	- - - - 1	5-18022-5	SCR, HEX HD CAP, M4 X 6.0	59
	- - - - 1	2063961-1	FEED FINGER	58
	- 3 3 3 3 3	2168400-4	SHCS, LOW HEAD, RoHS, M4 X 8	57
	- 2 2 2 2 2	2168083-8	SCR, SKT HD CAP, RoHS, M4 X 16	56
	- 2 2 2 2 2	5018030-2	NUT, HEX, REG, RoHS, M4	55
	- 2 2 2 2 2	5018030-1	NUT, HEX, REG, RoHS, M3	54
	- 2 2 2 2 2	986965-8	NUT, LOCK, HEX, TORQUE (M4)	53
	- 1 1 1 1 1	1-5018030-0	NUT, HEX, REG, RoHS, M3.5	52
	- - - 1 -	2119792-2	PAWL, EF, AIR	51
	- 1 1 1 1 1	1-1752354-3	STANDOFF, HOLD-DOWN	50
	- - - 1 2	18023-9	SCR, SKT HD CAP M4 X 6.0	49
	- - - - 1	2119652-1	FEED CAM, PRE FEED	48
	- 1 1 1 1 1	2079383-7	SCR, BHSC, RoHS (M8 X 25)	41
	- 1 1 1 1 1	2119645-1	DISC, NUMBERED FA WIRE ADJUSTMENT	40
	- 1 1 1 1 1	2119957-1	APPLICATOR SHIM PACK	39
	- 1 1 1 1 1	2119644-2	RAM WASHER, PRECISION	38
	- 7 7 7 7 7	1-18028-2	WASHER, FLAT, REG M4	33
	- 2 2 2 2 2	2168083-9	SCR, SKT HD CAP, RoHS, M4 X 20	31
	- 2 2 2 2 2	2168083-2	SCR, SKT HD CAP, RoHS, M4 X 8.0	29
	- 1 1 1 1 1	690455-2	STRIPPER, FRONT CASTING	27
	- 2 2 2 2 2	1320906-1	STUD, THREADED	25
	- 1 1 1 1 1	1752371-3	PLATE, STRIP GUIDE	24
	- 1 1 1 1 1	240825-1	PLATE, STRIP HOLD DOWN	23
	- 2 2 2 2 2	2-22281-3	SPRING, COMPRESSION	22
	- 1 1 1 1 1	1752373-4	DRAG	20
	- 2 2 2 2 2	1901259-6	GUIDE, LOWER STRIP	18
	- 1 1 1 1 1	3-240641-0	SPACER	16
	- 1 1 1 1 1	1752360-1	SPACER, HOLD-DOWN	13
	- 1 1 1 1 1	240833-4	PLATE, REAR SHEAR	11
	- - - - -	-	-	10
	- 1 1 1 1 1	690482-5	PLATE, FRONT SHEAR	9
	1 1 1 1 1 1	1-1333219-5	ANVIL, COMBINATION	8
	- 1 1 1 1 1	2217206-8	BLADE, SLUG	7
	- 1 1 1 1 1	3-240641-2	SPACER	5
	- 1 1 1 1 1	238009-3	BLOCK, FL CRIMPER SPACER	4
	1 1 1 1 1 1	1-2119785-7	CRIMPER, INSULATION OVERLAP PREMIUM	3
	- 1 1 1 1 1	455888-9	SPACER, CRIMPER	2
	1 1 1 1 1 1	6-456408-6	CRIMPER, WIRE PREMIUM	1
	-77-27-25-22-21	PART NO	DESCRIPTION	ITEM NO

DIMENSIONS:		TOLERANCES UNLESS OTHERWISE SPECIFIED:		DWG		TE Connectivity	
mm	0 PLC ±.5	1 PLC ±.5	2 PLC ±.5	3 PLC ±.5	4 PLC ±.5	5 PLC ±.5	6 PLC ±.5
	ANGLES ±.0001						
MATERIAL	FINISH	WEIGHT	SCALE	DATE	REV	Customer Accessible Production Drawing	
			1:1	21DEC2011	3	SHEET 3 OF 4	

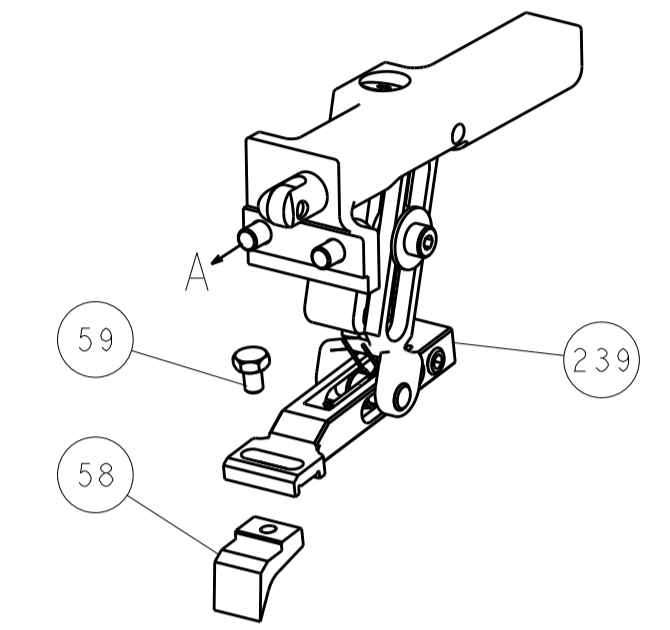
LOC		DIST		REVISIONS			
A	66	P	LTM	DESCRIPTION	DATE	OWN	APVD
		-	-	SEE SHEET 1	-	-	-



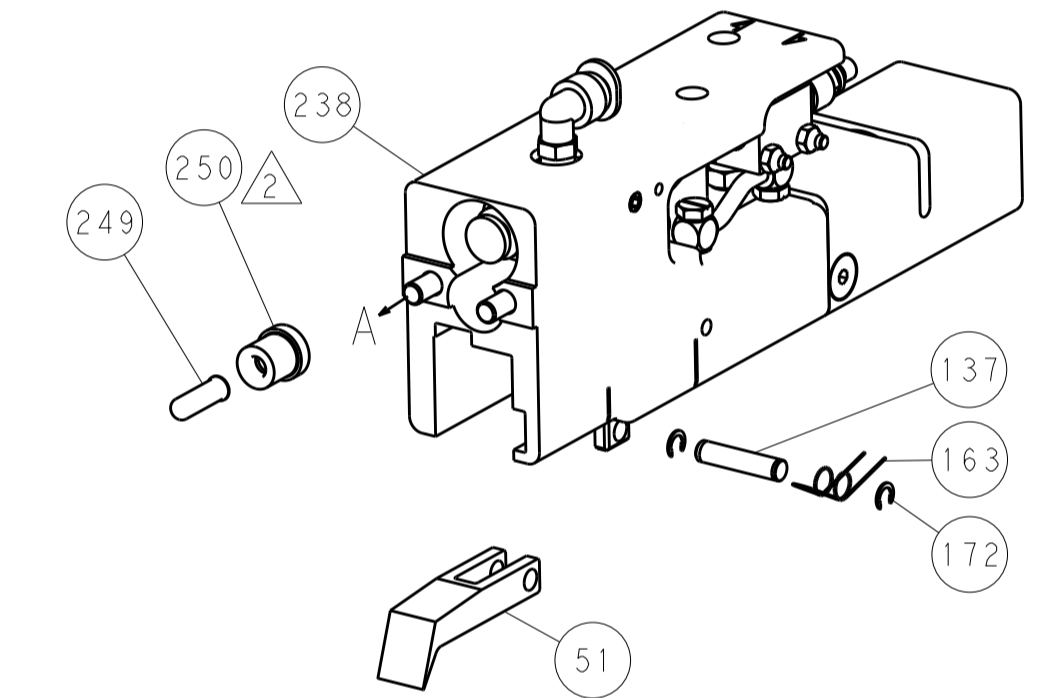
HOLDDOWN SET-UP



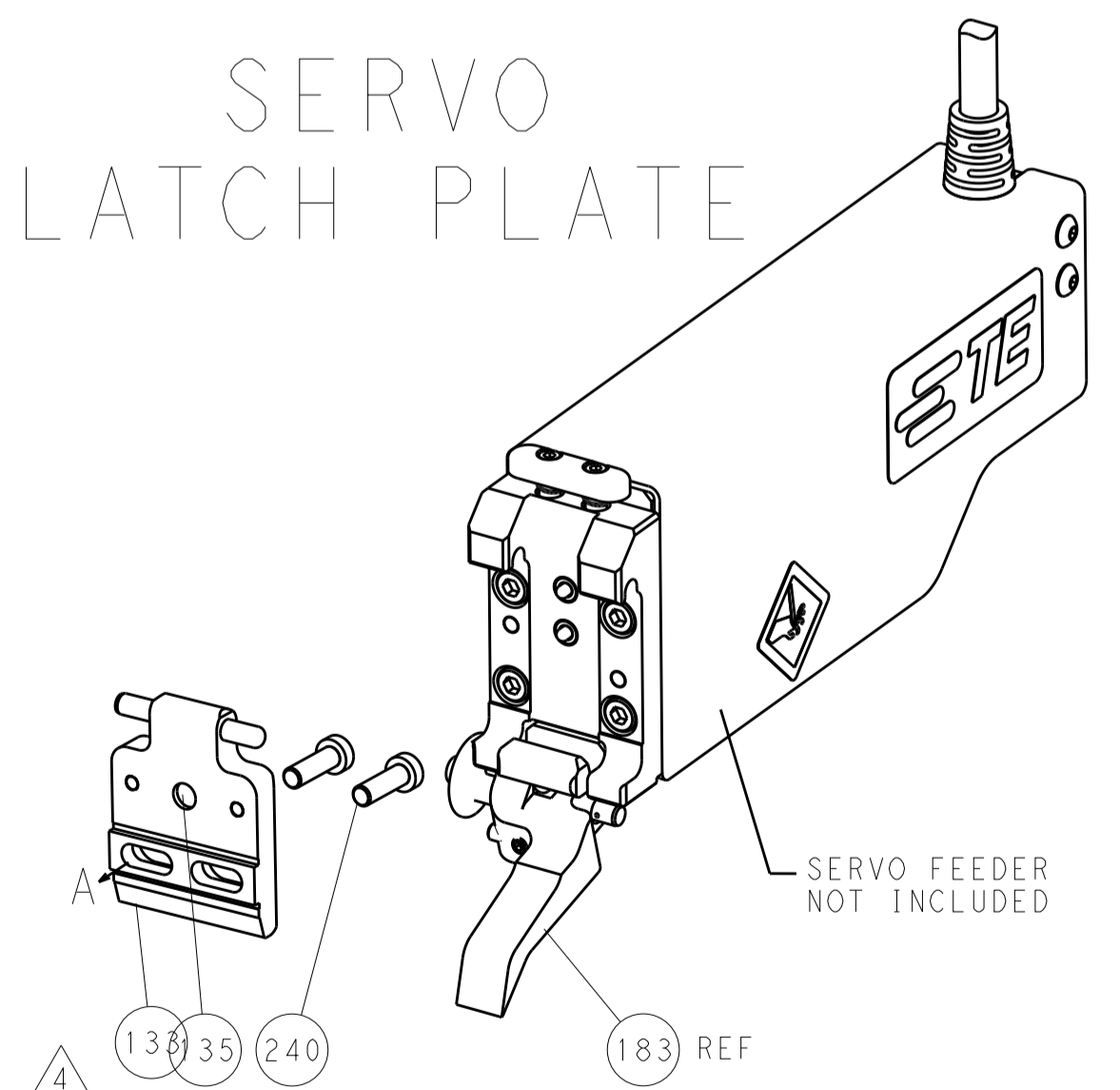
FEED TYPE  
MECHANICAL



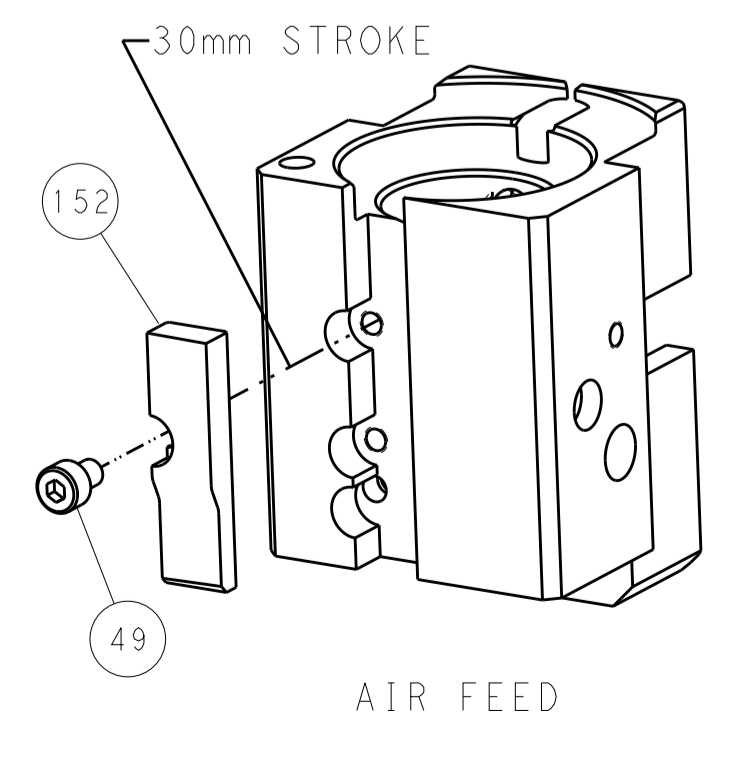
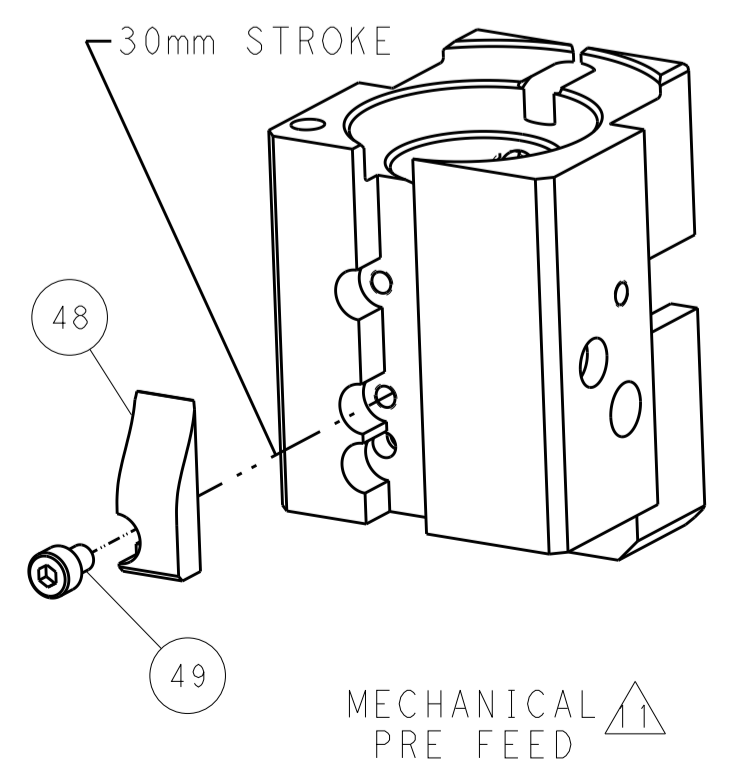
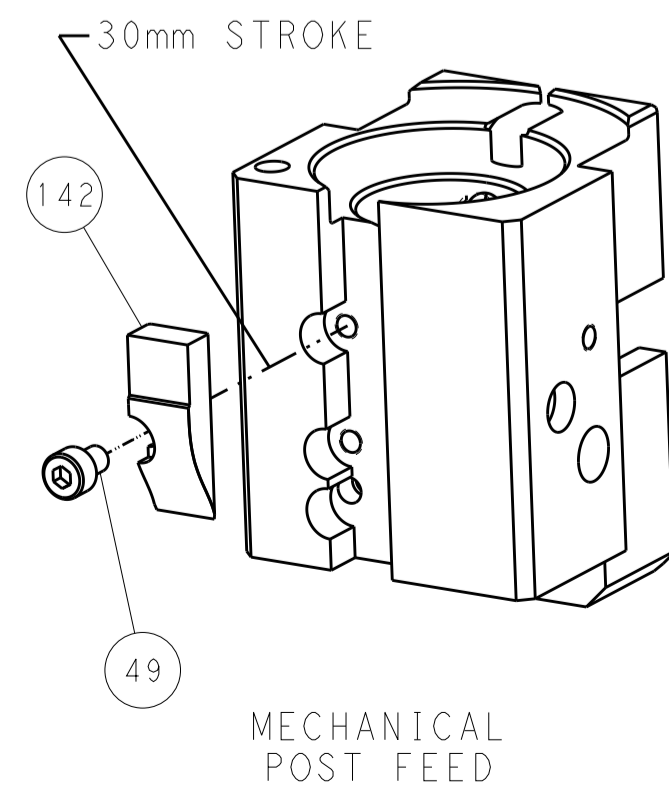
PNEUMATIC



SERVO LATCH PLATE



CAM POSITIONS



PACIFIC VERSION  
 Shown on sheets 3 of 4 & 4 of 4  
 (Atlantic version shown on sheets 1 of 4 & 2 of 4)

DIMENSIONS:		TOLERANCES UNLESS OTHERWISE SPECIFIED:		OWN: HOFFNER 20DEC2011		TE Connectivity	
mm	0 PLC ±0.5	1 PLC ±0.5	2 PLC ±0.13	3 PLC ±0.13	4 PLC ±0.013	5 PLC ±0.0013	Harrisburg, PA 17105-3608
	ANGLES ±0.0013	FINISH		APVD: T. ELBIN 21DEC2011		NAME: Ocean End Feed Applier	
MATERIAL:				PRODUCT SPEC		SIZE: CAGE CODE DRAWING NO: A11 00779 C=2150224	
				APPLICATION SPEC		RESTRICTED TO	
				WEIGHT		SCALE: 1:1 SHEET 4 OF 4 REV B	
				Customer Accessible Production Drawing			