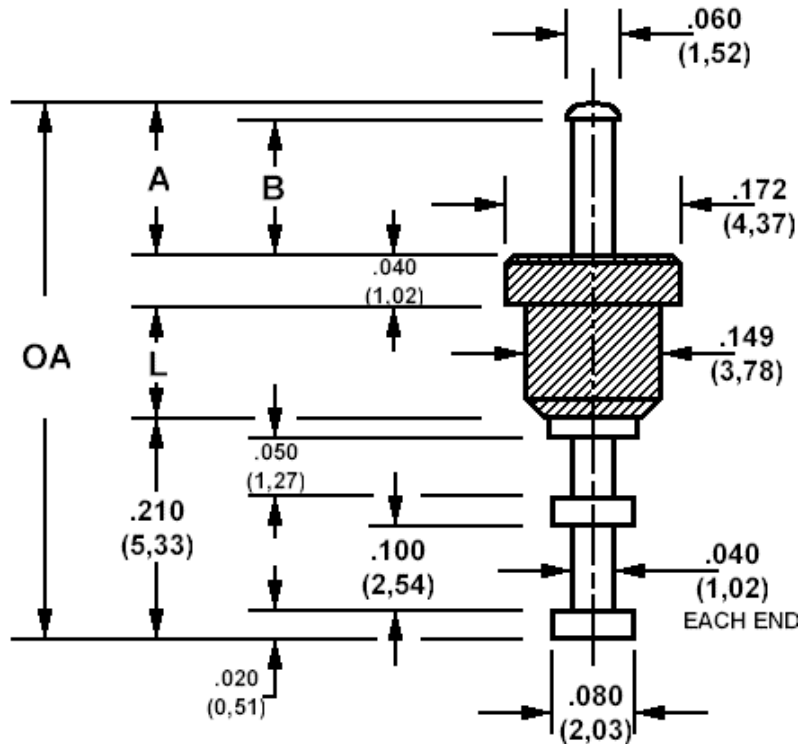


571-4186 Insulated solder terminal, Turreted, Feed thru

Recommended mounting hole .136 (3,45)



How to order code

571-4186-XX-YY-19

Basic Part No (XX = Panel thickness, YY = plating finish. See tables for options)

Basic Part No.		OA (ref)	L	Panel Thickness (XX)
571-4186	-01	.500 (12,70)	.100 (2,54)	.031 (0,79) to .062 (1,59)
	-02	.500 (12,70)	.125 (3,18)	.031 (0,79) to .085 (2,16)
	-03	.609 (15,47)	.165 (4,19)	.031 (0,79) to .125 (3,18)

Additional Dimensions			
Basic Part No.		A	B
571-4186	-01	.150 (3,81)	.120 (3,05)
	-02	.125 (3,18)	.095 (2,41)
	-03	.194 (4,93)	.164 (4,17)

Component	Material	Finish _t (YY)	
		-01	-05
Terminal	Brass	Silver	Electro Solder
Insulator	Teflon - white		

Additional Specifications	Panel thickness		
	-01	-02	-03
Flashover VRMS at Sea Level	3000	3000	3000
Capacitance (pF)	0.4	0.4	0.4

Teflon is a registered trademark of Dupont