

PLEASE CHECK WWW.MOLEX.COM FOR LATEST PART INFORMATION

Part Number: [0022272231](#)
Status: **Active**
Overview: [kk](#)
Description: 2.54mm (.100") Pitch KK® Wire-to-Board Header, Vertical, with Friction Lock, 23 Circuits, Tin (Sn) Plating

Documents:

[3D Model](#) [Product Specification PS-99020-0088 \(PDF\)](#)
[Drawing \(PDF\)](#) [RoHS Certificate of Compliance \(PDF\)](#)
[Product Specification PS-10-07 \(PDF\)](#)

Agency Certification

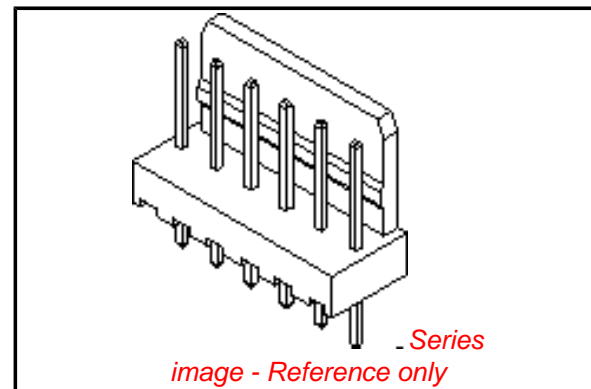
CSA LR19980
 UL E29179

General

Product Family PCB Headers
 Series [6410](#)
 Application Wire-to-Board
 Overview [kk](#)
 Product Name KK®

Physical

Breakaway No
 Circuits (Loaded) 23
 Circuits (maximum) 23
 Color - Resin Natural (White)
 First Mate / Last Break No
 Flammability 94V-0
 Glow-Wire Compliant No
 Guide to Mating Part No
 Keying to Mating Part None
 Lock to Mating Part Yes
 Material - Metal Brass
 Material - Plating Mating Tin
 Material - Plating Termination Tin
 Material - Resin Nylon
 Number of Rows 1
 Orientation Vertical
 PC Tail Length (in) 0.140 In
 PC Tail Length (mm) 3.56 mm
 PCB Locator No
 PCB Retention None
 PCB Thickness Recommended (in) 0.063 In
 PCB Thickness Recommended (mm) 1.60 mm
 Packaging Type Bag
 Pitch - Mating Interface (in) 0.100 In
 Pitch - Mating Interface (mm) 2.54 mm
 Pitch - Term. Interface (in) 0.100 In
 Pitch - Term. Interface (mm) 2.54 mm
 Plating min: Mating (µin) 200
 Plating min: Mating (µm) 5
 Plating min: Termination (µin) 200
 Plating min: Termination (µm) 5
 Polarized to Mating Part Yes
 Polarized to PCB No



EU RoHS

**ELV and RoHS
Compliant**
REACH SVHC
 Not Reviewed
**Halogen-Free
Status**
Not Reviewed

China RoHS



**Need more information on product
environmental compliance?**

Email productcompliance@molex.com
 For a multiple part number RoHS Certificate of Compliance, [click here](#)

Please visit the [Contact Us](#) section for any non-product compliance questions.

Search Parts in this Series

[6410Series](#)

Mates With

KK® Crimp Terminal Housing [2695](#) , [6471](#)

| | |
|--------------------------------|--------------|
| Shrouded | Partial |
| Stackable | No |
| Surface Mount Compatible (SMC) | No |
| Temperature Range - Operating | 0°C to +75°C |
| Termination Interface: Style | Through Hole |

Electrical

| | |
|-------------------------------|------|
| Current - Maximum per Contact | 4A |
| Voltage - Maximum | 250V |

Solder Process Data

| | |
|------------------------------|------------------------|
| Lead-free Process Capability | Wave Capable (TH only) |
|------------------------------|------------------------|

Material Info

| | |
|-----------------|------------------|
| Old Part Number | AE-6410-23A(102) |
|-----------------|------------------|

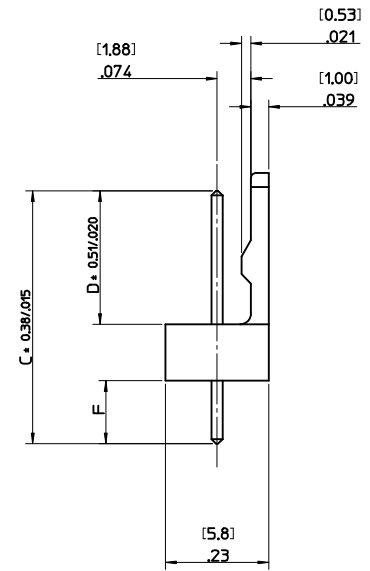
Reference - Drawing Numbers

| | |
|-------------------------|-------------------------|
| Packaging Specification | PK-6373-001 |
| Product Specification | PS-10-07, PS-99020-0088 |
| Sales Drawing | SDAE-6410-N |

This document was generated on 05/24/2010

PLEASE CHECK WWW.MOLEX.COM FOR LATEST PART INFORMATION

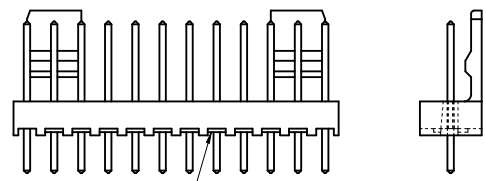
| NO. OF CCTS | DIMN. "A" | DIMN. "B" |
|-------------|--------------------|--------------------|
| 2 | (2.54) .100 | (5.08) .200 |
| 3 | (5.08) .200 | (7.62) .300 |
| 4 | (7.62) .300 | (10.16) .400 |
| 5 | (10.16) .400 | (12.70) .500 |
| 6 | (12.70) .500 | (15.24) .600 |
| 7 | (15.24) .600 | (17.78) .700 |
| 8 | (17.78) .700 | (20.32) .800 |
| 9 | (20.32) .800 | (22.86) .900 |
| 10 | (22.86) .900 | (25.40) 1.000 |
| 11 | (25.40) 1.000 | (27.94) 1.100 |
| 12 | (27.94) 1.100 | (30.48) 1.200 |
| 13 | (30.48) 1.200 | (33.02) 1.300 |
| 14 | (33.02) 1.300 | (35.56) 1.400 |
| 15 | (35.56) 1.400 | (38.10) 1.500 |
| 16 | (38.10) 1.500 | (40.64) 1.600 |
| 17 | (40.64) 1.600 | (43.18) 1.700 |
| 18 | (43.18) 1.700 | (45.72) 1.800 |
| 19 | (45.72) 1.800 | (48.26) 1.900 |
| 20 | (48.26) 1.900 | (50.80) 2.000 |
| 21 | (50.80) 2.000 | (53.34) 2.100 |
| 22 | (53.34) 2.100 | (55.88) 2.200 |
| 23 | (55.88) 2.200 | (58.42) 2.300 |
| 24 | (58.42) 2.300 | (60.86) 2.400 |
| 25 | (60.86) 2.400 | (63.50) 2.500 |
| 26 | (63.50) 2.500 | (66.04) 2.600 |
| 27 | (66.04) 2.600 | (68.58) 2.700 |
| 28 | (68.58) 2.700 | (71.12) 2.800 |



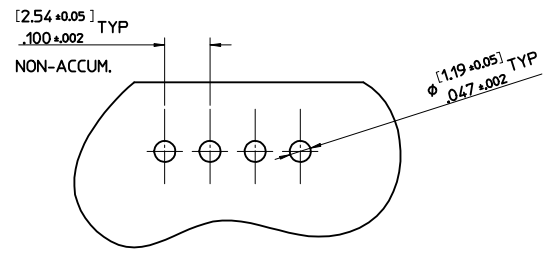
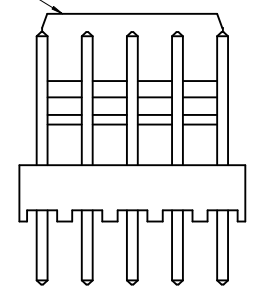
(0.64)/.025 SQ. PIN BRASS
FOR PLATING SEE SHEET 2

AE-6410- N * (*)

NO. OF CCTS
WAFER ASSY. OPTION
PLATING TYPE



SEE NOTE 6



NOTES:

1. WAFER MATERIAL: NYLON, 94V-0
2. PIN PUSH OUT FORCE: (0.907 Kg)/2lbs MIN.
3. WAFERS STACKABLE END TO END WITH (2.54)/.100 BETWEEN END PINS
4. THIS PART CONFORMS TO MOLEX PROD. SPEC. PS99020-0088.
5. PIN SOLDERABILITY PER MOLEX SPEC. NO. 152.
6. SINGLE RAMP ON 2-6 CCTS TWO RAMP ON 7-28 CCTS, AS SHOWN.
7. PRODUCT SPECIFICATION: PS-99020-0087
8. PCB THICKNESS 1.6MM

| ADD VOIDED OPTION EC NO: E2009-0413 DRWN: BMAGUIRE 2009/02/24 CHKD: APPR: BMAGUIRE 2009/02/24 REV BB | QUALITY SYMBOLS ▽=0 ▽=0 | GENERAL TOLERANCES (UNLESS SPECIFIED) <table border="1"> <thead> <tr> <th></th> <th>mm</th> <th>INCH</th> </tr> </thead> <tbody> <tr> <td>4 PLACES</td> <td>± .010</td> <td>± .0005</td> </tr> <tr> <td>3 PLACES</td> <td>± .014</td> <td>± .0005</td> </tr> <tr> <td>2 PLACES</td> <td>± 0.25</td> <td>± .010</td> </tr> <tr> <td>1 PLACE</td> <td>± 0.35</td> <td>± .014</td> </tr> </tbody> </table> ANGULAR ± .5° | | mm | INCH | 4 PLACES | ± .010 | ± .0005 | 3 PLACES | ± .014 | ± .0005 | 2 PLACES | ± 0.25 | ± .010 | 1 PLACE | ± 0.35 | ± .014 | DIMENSION STYLE MM/IN | SCALE 4:1 | DESIGN UNITS METRIC | THIRD ANGLE PROJECTION |
|---|-------------------------------|--|------------------------------------|----------------------------|------|----------|--------------------|---------|----------|--------|---------|----------|--------|--------|---------|--------|--------|---------------------------------|---------------------|-------------------------------|------------------------|
| | | mm | INCH | | | | | | | | | | | | | | | | | | |
| | 4 PLACES | ± .010 | ± .0005 | | | | | | | | | | | | | | | | | | |
| | 3 PLACES | ± .014 | ± .0005 | | | | | | | | | | | | | | | | | | |
| 2 PLACES | ± 0.25 | ± .010 | | | | | | | | | | | | | | | | | | | |
| 1 PLACE | ± 0.35 | ± .014 | | | | | | | | | | | | | | | | | | | |
| DRAWN BY T. MAHON | DATE 28/01/03 | TITLE WAFER, FRICTION LOCK KK (2.54)/.100 FOR (0.64)/.025 SQ. PINS | MOLEX INCORPORATED | | | | | | | | | | | | | | | | | | |
| CHECKED BY BMAGUIRE | DATE 28/01/03 | APPROVED BY JDENNEHY | | | | | DATE 2005/03/11 | | | | | | | | | | | | | | |
| DRAFT WHERE APPLICABLE MUST REMAIN WITHIN DIMENSIONS | | MATERIAL NO. SEE CHART | DOCUMENT NO. SDAE-6410-N | SHEET NO. 1 OF 4 | | | | | | | | | | | | | | | | | |
| THIS DRAWING CONTAINS INFORMATION THAT IS PROPRIETARY TO MOLEX INCORPORATED AND SHOULD NOT BE USED WITHOUT WRITTEN PERMISSION | | | | | | | | | | | | | | | | | | | | | |

| ENG. NO. | AE-6410-NA (102) | | AE-6410-NC (102) | | AE-6410-ND (102) | | AE-6410-NH (102) | | AE-6410-NJ (102) | | AE-6410-NL (102) | | |
|-----------------|--|------------------|--|------------------|--|------------------|--|------------------|--|------------------|--|------------------|------------|
| DIMN. "D" | (7.50 ±0.25) .295 ±.010 | | (7.14 ±0.25) .281 ±.010 | | (8.05 ±0.25) .317 ±.010 | | (7.49 ±0.25) .295 ±.010 | | (18.80 ±0.38) .740 ±.015 | | (8.50 ±0.38) .335 ±.015 | | |
| DIMN. "C" | (14.22) / .560 | | (20.32) / .800 | | (14.22) / .560 | | (14.98) / .590 | | (25.40) / 1.000 | | (23.80) / .937 | | |
| DIMN. "F" | (3.56) / .140 REF | | (10.00) / .394 REF | | (2.99) .118 REF | | (4.32) / .170 REF | | (3.43) / .135 REF | | (12.13) / .477 REF | | |
| PLATING | TIN MIN. (0.005)/.0002 OVER (0.0025)/.0001 COPPER MIN. | | TIN MIN. (0.005)/.0002 OVER (0.0025)/.0001 COPPER MIN. | | TIN MIN. (0.005)/.0002 OVER (0.0025)/.0001 COPPER MIN. | | TIN MIN. (0.005)/.0002 OVER (0.0025)/.0001 COPPER MIN. | | TIN MIN. (0.005)/.0002 OVER (0.0025)/.0001 COPPER MIN. | | TIN MIN. (0.005)/.0002 OVER (0.0025)/.0001 COPPER MIN. | | |
| NO. OF CIRCUITS | 2 | AE-6410-2A(102) | 22-27-2021 | AE-6410-2C(102) | 38-00-6292 | AE-6410-2D(102) | 38-00-5882 | AE-6410-2H(102) | 38-00-6754 | AE-6410-2J(102) | NOT TOOLED | AE-6410-2L(102) | NOT TOOLED |
| | 3 | 3 A(102) | ▲ 2031 | 3 C(102) | ▲ 6293 | 3 D(102) | ▲ 5883 | 3 H(102) | NOT TOOLED | 3 J(102) | NOT TOOLED | L(102) | ▲ |
| | 4 | 4 A(102) | 2041 | 4 C(102) | 6294 | 4 D(102) | 5884 | 4 H(102) | 22-27-2046 | 4 J(102) | NOT TOOLED | L(102) | |
| | 5 | 5 A(102) | 2051 | 5 C(102) | 6295 | 5 D(102) | 5885 | 5 H(102) | NOT TOOLED | 5 J(102) | 22-27-2057 | L(102) | |
| | 6 | 6 A(102) | 2061 | 6 C(102) | 6296 | 6 D(102) | 5886 | 6 H(102) | ▲ | 6 J(102) | NOT TOOLED | L(102) | |
| | 7 | 7 A(102) | 2071 | 7 C(102) | 6297 | 7 D(102) | 5887 | 7 H(102) | | 7 J(102) | NOT TOOLED | L(102) | |
| | 8 | 8 A(102) | 2081 | 8 C(102) | 6298 | 8 D(102) | 5888 | 8 H(102) | | 8 J(102) | 22-27-2087 | L(102) | |
| | 9 | 9 A(102) | 2091 | 9 C(102) | 6299 | 9 D(102) | 5889 | 9 H(102) | | 9 J(102) | NOT TOOLED | L(102) | |
| | 10 | 10 A(102) | 2101 | 10 C(102) | 6300 | 10 D(102) | 5890 | 10 H(102) | | 10 J(102) | ▲ | L(102) | |
| | 11 | 11 A(102) | 2111 | 11 C(102) | 6301 | 11 D(102) | 5891 | 11 H(102) | NOT TOOLED | 11 J(102) | | L(102) | |
| | 12 | 12 A(102) | 2121 | 12 C(102) | 6302 | 12 D(102) | 5892 | 12 H(102) | 22-27-2126 | 12 J(102) | | L(102) | |
| | 13 | 13 A(102) | 2131 | 13 C(102) | 6303 | 13 D(102) | 5893 | 13 H(102) | NOT TOOLED | 13 J(102) | | L(102) | ▼ |
| | 14 | 14 A(102) | 2141 | 14 C(102) | 6304 | 14 D(102) | 5894 | 14 H(102) | ▲ | 14 J(102) | | L(102) | NOT TOOLED |
| | 15 | 15 A(102) | 2151 | 15 C(102) | 6305 | 15 D(102) | 5895 | 15 H(102) | | 15 J(102) | | L(102) | 38-00-1736 |
| | 16 | 16 A(102) | 2161 | 16 C(102) | 6306 | 16 D(102) | 5896 | 16 H(102) | | 16 J(102) | | L(102) | NOT TOOLED |
| | 17 | 17 A(102) | 2171 | 17 C(102) | 6307 | 17 D(102) | 5897 | 17 H(102) | | 17 J(102) | | L(102) | ▲ |
| | 18 | 18 A(102) | 2181 | 18 C(102) | 6308 | 18 D(102) | 5898 | 18 H(102) | | 18 J(102) | | L(102) | |
| | 19 | 19 A(102) | 2191 | 19 C(102) | ▼ 6309 | 19 D(102) | 5899 | 19 H(102) | | 19 J(102) | | L(102) | |
| | 20 | 20 A(102) | 2201 | 20 C(102) | 38-00-6310 | 20 D(102) | 5900 | 20 H(102) | | 20 J(102) | | L(102) | |
| | 21 | 21 A(102) | 2211 | 21 C(102) | NOT TOOLED | 21 D(102) | 5901 | 21 H(102) | | 21 J(102) | | L(102) | |
| | 22 | 22 A(102) | 2221 | 22 C(102) | ▲ | 22 D(102) | 5902 | 22 H(102) | | 22 J(102) | | L(102) | |
| | 23 | 23 A(102) | 2231 | 23 C(102) | | 23 D(102) | 5903 | 23 H(102) | | 23 J(102) | | L(102) | |
| | 24 | 24 A(102) | 2241 | 24 C(102) | | 24 D(102) | 5904 | 24 H(102) | | 24 J(102) | | L(102) | |
| | 25 | 25 A(102) | 2251 | 25 C(102) | | 25 D(102) | 5905 | 25 H(102) | | 25 J(102) | | L(102) | |
| | 26 | 26 A(102) | 2261 | 26 C(102) | | 26 D(102) | 5906 | 26 H(102) | | 26 J(102) | | L(102) | |
| | 27 | 27 A(102) | ▼ 2271 | 27 C(102) | ▼ | 27 D(102) | ▼ 5907 | 27 H(102) | ▼ | 27 J(102) | ▼ | L(102) | ▼ |
| | 28 | AE-6410-28A(102) | 22-27-2281 | AE-6410-28C(102) | NOT TOOLED | AE-6410-28D(102) | 38-00-5908 | AE-6410-28H(102) | NOT TOOLED | AE-6410-28J(102) | NOT TOOLED | AE-6410-28L(102) | NOT TOOLED |

| | | | | | | | |
|--|---|---|-----------------------------|---|-----------------------------|------------------------|--|
| SEE SHEET 1 EC NO: E2009-0413 DRAWN: BMAGUIRE 2009/07/24 CHKD: 2009/07/24 APPR: BMAGUIRE 2009/07/24 REV: BB | QUALITY SYMBOLS ▽=0 ▽=0 | GENERAL TOLERANCES (UNLESS SPECIFIED) mm INCH 4 PLACES ± --- ± --- 3 PLACES ± --- ± .010 2 PLACES ± 0.25 ± .014 1 PLACE ± 0.35 ± --- ANGULAR ± .5 ° | DIMENSION STYLE MM/IN | SCALE 4:1 | DESIGN UNITS METRIC | THIRD ANGLE PROJECTION | |
| | DRAFT WHERE APPLICABLE MUST REMAIN WITHIN DIMENSIONS | DRAWN BY T. MAHON | DATE 28/01/03 | TITLE WAFER, FRICTION LOCK KK (2.54)/.100 FOR (0.64)/.025 SQ. PINS | MATERIAL NO. SDAE-6410-N | | |
| | APPROVED BY JDENNEHY | DATE 2005/03/11 | MATERIAL NO. SDAE-6410-N | | SHEET NO. 2 OF 4 | | |
| | THIS DRAWING CONTAINS INFORMATION THAT IS PROPRIETARY TO MOLEX INCORPORATED AND SHOULD NOT BE USED WITHOUT WRITTEN PERMISSION | | | | | | |

| ENG. NO. | AE-6410-NA (501) | | AE-6410-NA (516) | | AE-6410-NK (516) | | AE-6410-NC (501) | | AE-6410-NA (509) | | AE-6410-NS (501) | | AE-6410-NA (503) | | |
|-----------------|---|------------------|--|------------------|--|------------------|--|------------------|--|------------------|--|-----------------|--|------------------|------------|
| DIMN. "D" | (7.50 ±0.25) .295 ±.010 | | (7.50 ±0.25) .295 ±.010 | | (9.22) REF .363 | | (7.14 ±0.25) .281 ±.010 | | (7.50 ±0.25) .295 ±.010 | | (7.50 ±0.25) .295 ±.010 | | (7.50 ±0.25) .295 ±.010 | | |
| DIMN. "C" | (14.22) / .560 | | (14.22) / .560 | | (15.88) / .625 | | (20.32) / .800 | | (14.22) / .560 | | (16.51) / .649 | | (14.22) / .560 | | |
| DIMN. "F" | (3.56) / .140 REF | | (3.56) / .140 REF | | (3.48 ±0.25) .137 ±.010 | | (10.00) / .394 REF | | (3.56) / .140 REF | | (5.84) / .230 REF | | (3.56) / .140 REF | | |
| PLATING | GOLD MIN. (0.0005)/.000020 OVER (0.00076)/.000030 NICKEL MIN. | | GOLD MIN. (0.00025)/.000010 OVER (0.00076)/.000030 NICKEL MIN. | | GOLD MIN. (0.00025)/.000010 OVER (0.00076)/.000030 NICKEL MIN. | | GOLD MIN. (0.00051)/.000020 OVER (0.00076)/.000030 NICKEL MIN. | | GOLD MIN. (0.00127)/.000050 OVER (0.00076)/.000030 NICKEL MIN. | | GOLD MIN. (0.00051)/.000020 OVER (0.00076)/.000030 NICKEL MIN. | | GOLD MIN. (0.00076)/.000030 OVER (0.00127)/.000050 NICKEL MIN. | | |
| NO. OF CIRCUITS | 2 | AE-6410-2A(501) | 22-29-2021 | AE-6410-2A(516) | 22-29-2022 | AE-6410-2K(516) | 38-00-0932 | AE-6410-2C(501) | NOT TOOLED | AE-6410-2A(509) | 38-00-7250 | | NOT TOOLED | AE-6410-2A(503) | 38-00-7062 |
| | 3 | 3 A(501) | ↑ 2031 | 3 A(516) | ↑ 2032 | 3 K(516) | ↑ 0933 | 3 C(501) | 38-00-5909 | 3 A(509) | NOT TOOLED | | NOT TOOLED | 3 A(503) | ↑ 7063 |
| | 4 | 4 A(501) | 2041 | 4 A(516) | 2042 | 4 K(516) | 0934 | 4 C(501) | NOT TOOLED | 4 A(509) | 38-00-7251 | AE-6410-2S(509) | 38-00-7666 | 4 A | ↑ 7064 |
| | 5 | 5 A(501) | 2051 | 5 A(516) | 2052 | 5 K(516) | 0935 | 5 C(501) | ↑ | 5 A(509) | NOT TOOLED | | NOT TOOLED | 5 A | ↑ 7065 |
| | 6 | 6 A(501) | 2061 | 6 A(516) | 2062 | 6 K(516) | 0936 | 6 C(501) | ↑ | 6 A(509) | ↑ | 6 S(501) | 38-00-7667 | 6 A | ↑ 7066 |
| | 7 | 7 A(501) | 2071 | 7 A(516) | 2072 | 7 K(516) | 0937 | 7 C(501) | ↑ | 7 A(509) | ↑ | | NOT TOOLED | 7 A | ↓ 7067 |
| | 8 | 8 A(501) | 2081 | 8 A(516) | 2082 | 8 K(516) | 0938 | 8 C(501) | ↑ | 8 A(509) | ↑ | | ↑ | 8 A | 38-00-7068 |
| | 9 | 9 A(501) | 2091 | 9 A(516) | 2092 | 9 K(516) | 0939 | 9 C(501) | ↑ | 9 A(509) | ↑ | | ↑ | 9 A | NOT TOOLED |
| | 10 | 10 A(501) | 2101 | 10 A(516) | 2102 | 10 K(516) | 0940 | 10 C(501) | ↑ | 10 A(509) | ↑ | | ↑ | 10 A | NOT TOOLED |
| | 11 | 11 A(501) | 2111 | 11 A(516) | 2112 | 11 K(516) | 0941 | 11 C(501) | ↑ | 11 A(509) | ↑ | | ↑ | 11 A | NOT TOOLED |
| | 12 | 12 A(501) | 2121 | 12 A(516) | 2122 | 12 K(516) | 0942 | 12 C(501) | ↑ | 12 A(509) | ↑ | | ↑ | 12 A | 38-00-7072 |
| | 13 | 13 A(501) | 2131 | 13 A(516) | 2132 | 13 K(516) | 0943 | 13 C(501) | ↑ | 13 A(509) | ↑ | | ↑ | 13 A | NOT TOOLED |
| | 14 | 14 A(501) | 2141 | 14 A(516) | 2142 | 14 K(516) | 0944 | 14 C(501) | ↑ | 14 A(509) | ↑ | | ↑ | 14 A | 38-00-7074 |
| | 15 | 15 A(501) | 2151 | 15 A(516) | 2152 | 15 K(516) | 0945 | 15 C(501) | ↑ | 15 A(509) | ↑ | | ↑ | 15 A | NOT TOOLED |
| | 16 | 16 A(501) | 2161 | 16 A(516) | 2162 | 16 K(516) | 0946 | 16 C(501) | ↑ | 16 A(509) | ↑ | | ↑ | 16 A | ↑ |
| | 17 | 17 A(501) | 2171 | 17 A(516) | 2172 | 17 K(516) | 0947 | 17 C(501) | ↑ | 17 A(509) | ↑ | | ↑ | 17 A | ↑ |
| | 18 | 18 A(501) | 2181 | 18 A(516) | 2182 | 18 K(516) | 0948 | 18 C(501) | ↑ | 18 A(509) | ↑ | | ↑ | 18 A | ↓ |
| | 19 | 19 A(501) | 2191 | 19 A(516) | 2192 | 19 K(516) | 0949 | 19 C(501) | ↑ | 19 A(509) | ↑ | | ↑ | 19 A | NOT TOOLED |
| | 20 | 20 A(501) | 2201 | 20 A(516) | 2202 | 20 K(516) | 0950 | 20 C(501) | ↑ | 20 A(509) | ↑ | | ↑ | 20 A | 38-00-7080 |
| | 21 | 21 A(501) | 2211 | 21 A(516) | 2212 | 21 K(516) | 0951 | 21 C(501) | ↑ | 21 A(509) | ↑ | | ↑ | 21 A | NOT TOOLED |
| | 22 | 22 A(501) | 2221 | 22 A(516) | 2222 | 22 K(516) | 0952 | 22 C(501) | ↑ | 22 A(509) | ↑ | | ↑ | 22 A | NOT TOOLED |
| | 23 | 23 A(501) | 2231 | 23 A(516) | 2232 | 23 K(516) | 0953 | 23 C(501) | ↑ | 23 A(509) | ↑ | | ↑ | 23 A | NOT TOOLED |
| | 24 | 24 A(501) | 2241 | 24 A(516) | 2242 | 24 K(516) | 0954 | 24 C(501) | ↑ | 24 A(509) | ↑ | | ↑ | 24 A | 38-00-0441 |
| | 25 | 25 A(501) | 2251 | 25 A(516) | 2252 | 25 K(516) | 0955 | 25 C(501) | ↑ | 25 A(509) | ↑ | | ↑ | 25 A | NOT TOOLED |
| | 26 | 26 A(501) | 2261 | 26 A(516) | 2262 | 26 K(516) | 0956 | 26 C(501) | ↑ | 26 A(509) | ↑ | | ↑ | 26 A | ↑ |
| | 27 | 27 A(501) | ↓ 2271 | 27 A(516) | ↓ 2272 | 27 K(516) | ↓ 0957 | 27 C(501) | ↓ | 27 A(509) | ↓ | | ↓ | 27 A(503) | ↓ |
| | 28 | AE-6410-28A(501) | 22-29-2281 | AE-6410-28A(516) | 22-29-2282 | AE-6410-28K(516) | 38-00-0958 | AE-6410-28C(501) | NOT TOOLED | AE-6410-28A(509) | NOT TOOLED | | NOT TOOLED | AE-6410-28A(503) | NOT TOOLED |

| | | | | | | | |
|--|-----------------|---|---|--------------------|--------------|--|--|
| SEE SHEET 1 EC NO: E2009-0413 DRAWN: BMAGUIRE 2009/02/24 CHKD: 2009/02/24 APPR: BMAGUIRE 2009/02/24 DESCRIPTION REV | QUALITY SYMBOLS | GENERAL TOLERANCES (UNLESS SPECIFIED) mm INCH 4 PLACES ± --- ± --- 3 PLACES ± --- ± .010 2 PLACES ± 0.25 ± .014 1 PLACE ± 0.35 ± --- ANGULAR ± .5 ° | DIMENSION STYLE | SCALE | DESIGN UNITS | THIRD ANGLE PROJECTION | |
| | ▼=0 ▽=0 | | MM/IN | 4:1 | METRIC | | |
| | DRAWN BY | | DATE | TITLE | | WAFER, FRICTION LOCK KK (2.54)/.100 FOR (0.64)/.025 SQ. PINS | |
| | T. MAHON | | 28/01/03 | MOLEX INCORPORATED | | | |
| CHECKED BY | | DATE | DOCUMENT NO. | | SHEET NO. | | |
| BMAGUIRE | | 28/01/03 | SDAE-6410-N | | 3 OF 4 | | |
| APPROVED BY | | DATE | THIS DRAWING CONTAINS INFORMATION THAT IS PROPRIETARY TO MOLEX INCORPORATED AND SHOULD NOT BE USED WITHOUT WRITTEN PERMISSION | | | | |
| JDENNEHY | | 2005/03/11 | | | | | |

VOIDED OPTION

| PART No. | ENG No. | CKT SIZE | VOID LOCATION | DIM A | DIM B | DIM D |
|------------|-------------|----------|---------------|-----------------------------|-----------------|---------------|
| 38-00-7222 | A-6410-3A-2 | 3 | 2 | (5.08 ±0.10) / .200 ±.004 | (7.62) / .300 | (7.50) / .295 |
| 4749 | -4A-3 | 4 | 3 | (7.62 ±0.13) / .300 ±.005 | (10.16) / .400 | (7.50) / .295 |
| 0611 | -5A-3 | 5 | 3 | (10.16 ±0.13) / .400 ±.005 | (12.70) / .500 | (7.50) / .295 |
| 0089 | -6A-3 | 6 | 3 | (12.70 ±0.13) / .500 ±.005 | (15.24) / .600 | (7.50) / .295 |
| 0090 | -6A-51 | 6 | 3,4,5 | (12.70 ±0.13) / .500 ±.005 | (15.24) / .600 | (7.50) / .295 |
| 5370 | -15A-02 | 15 | 2 | (35.56 ±0.13) / 1.400 ±.005 | (38.10) / 1.500 | (7.50) / .295 |
| 5371 | -19A-12 | 19 | 12 | (45.72 ±0.15) / 1.800 ±.006 | (48.26) / 1.900 | (7.50) / .295 |
| 7688 | -12A-09 | 12 | 9 | (27.94 ±0.13) / 1.100 ±.005 | (30.48) / 1.200 | (7.50) / .295 |
| | | | | | | |

| | | | | | | | | | | |
|---|---|---------------------------|-----------------|--|--|--------------|---|------------------------|--|---------------------|
| ADD VOIDED OPTION EC NO: E2009-0413 DRWN: BMAGUIRE CHKD: APPR: BMAGUIRE BB | 2009/02/24 2009/02/24 2009/02/24 | DESCRIPTION ▽=0 □=0 | QUALITY SYMBOLS | GENERAL TOLERANCES (UNLESS SPECIFIED) mm INCH 4 PLACES ± --- ± --- 3 PLACES ± --- ± .010 2 PLACES ± 0.25 ± .014 1 PLACE ± 0.35 ± --- ANGULAR ± .5 ° | DIMENSION STYLE MM/IN | SCALE 4:1 | DESIGN UNITS METRIC | THIRD ANGLE PROJECTION | | |
| | DRAWN BY: T. MAHON DATE: 28/01/03 CHECKED BY: BMAGUIRE DATE: 28/01/03 APPROVED BY: JDENNEHY DATE: 2005/03/11 | | | | TITLE WAFER, FRICTION LOCK KK (2.54) / .100 FOR (0.64) / .025 SQ. PINS | | | | | |
| | DRAFT WHERE APPLICABLE MUST REMAIN WITHIN DIMENSIONS | | | | MATERIAL NO. SEE TABLE | | MOLEX INCORPORATED DOCUMENT NO. SDAE-6410-N | | | SHEET NO. 4 OF 4 |
| | SIZE A3 | | | | THIS DRAWING CONTAINS INFORMATION THAT IS PROPRIETARY TO MOLEX INCORPORATED AND SHOULD NOT BE USED WITHOUT WRITTEN PERMISSION | | | | | |