

UNSHIELDED RADIAL POWER INDUCTOR



P11R20605 SERIES



- Low cost, high current
- Inductance range from 22 - 1,000 μH
- Open construction
- Inductance tolerance: K = $\pm 10\%$ (add suffix letter for tolerance after the part number)
- Operating temperature range: -40°C to $+85^{\circ}\text{C}$
- RoHS compliant product

ELECTRICAL SPECIFICATION @ 25°C

| Part Number | Inductance (μH) ($\pm 10\%$) | DCR (Ω) (Max) | RATED I_{DC} (A) |
|---------------|---|------------------------------|---------------------------------|
| P11R20605-220 | 22 | 0.18 | 0.90 |
| 270 | 27 | 0.21 | 0.81 |
| 330 | 33 | 0.27 | 0.74 |
| 390 | 39 | 0.29 | 0.68 |
| 470 | 47 | 0.31 | 0.62 |
| 560 | 56 | 0.42 | 0.57 |
| 680 | 68 | 0.48 | 0.51 |
| 820 | 82 | 0.55 | 0.47 |
| 101 | 100 | 0.68 | 0.42 |
| 121 | 120 | 0.77 | 0.39 |
| 151 | 150 | 0.95 | 0.35 |
| 181 | 180 | 1.15 | 0.32 |
| 221 | 220 | 1.30 | 0.29 |
| 271 | 270 | 1.55 | 0.26 |
| 331 | 330 | 2.18 | 0.23 |
| 391 | 390 | 2.47 | 0.21 |
| 471 | 470 | 2.92 | 0.20 |
| 561 | 560 | 3.97 | 0.18 |
| 681 | 680 | 4.57 | 0.16 |
| 821 | 820 | 5.28 | 0.15 |
| 102 | 1000 | 7.06 | 0.13 |

- Inductance measured: 1KHz, $0.30V_{\text{RMS}}$
- I_{RATED} : Max 10% inductance drop and $\Delta T = 40^{\circ}\text{C}$ Temp Rise

Dimensions

Unless otherwise specified, all tolerances are:
 inch: .XX : ± 0.015 .XXX : ± 0.004
 mm: X,X : $\pm 0,38$ X,XX : $\pm 0,10$

Product performance is limited to specified parameters. Data is subject to change without prior notice.

13200 Estrella Ave., Bldg. B
Gardena, CA 90248

Tel: 310-325-1043
Fax: 310-325-1044

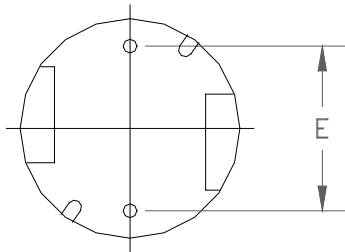
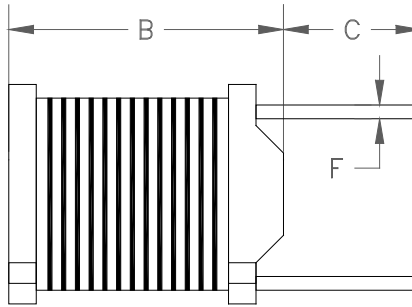
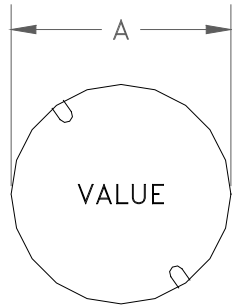
www.mpsind.com
sales@mpsind.com

UNSHIELDED RADIAL POWER INDUCTOR



P11R20605 SERIES

DIMENSIONS



| | |
|-----------------------|----|
| $A = 6.5 \text{ max}$ | mm |
| $B = 5.0 \text{ max}$ | mm |
| $C = 20.0 \pm 2.0$ | mm |
| $E = 4.0 \pm 0.5$ | mm |
| $F = 0.5 \text{ ref}$ | mm |
| | |
| | |

Product performance is limited to specified parameters. Data is subject to change without prior notice.

Dimensions
 Unless otherwise specified, all tolerances are:
 inch: .XX : ± 0.015 .XXX : ± 0.004
 mm: X,X : $\pm 0,38$ X,XX : $\pm 0,10$

13200 Estrella Ave., Bldg. B
 Gardena, CA 90248

Tel: 310-325-1043
 Fax: 310-325-1044

www.mpsind.com
 sales@mpsind.com