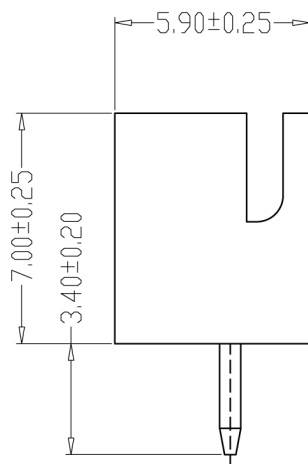
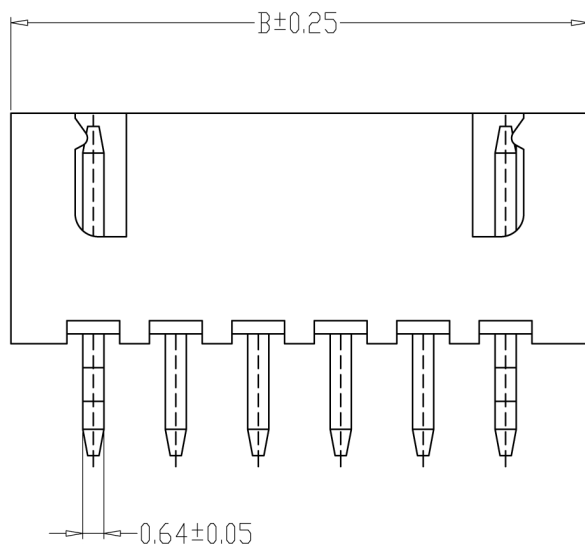
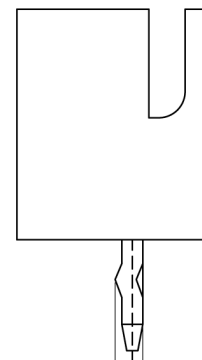


# Kinghelm®

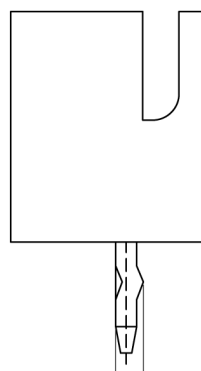
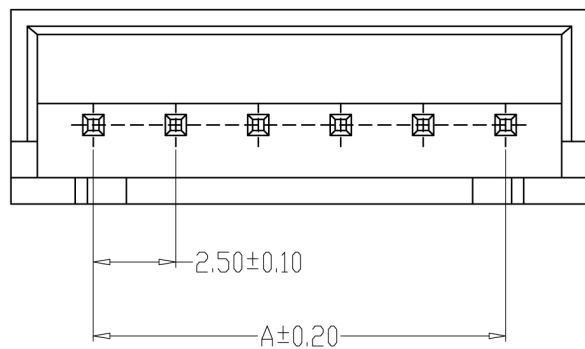
## 型号: KH-XH- (2-10) A-Z



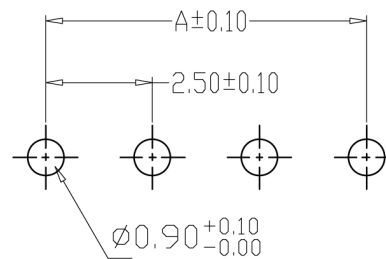
TYPE 1



TYPE 2



TYPE 3



PCB LAYOUT

### SPECIFICATIONS

- 1、Current Rating: 3A AC, DC
- 2、Voltage Rating: 250V AC, DC
- 3、Temperatuer Range:  $-25^{\circ}\text{C} \sim +85^{\circ}\text{C}$
- 4、Contact Resistance:  $20\text{m}\Omega$  Max
- 5、Insulation Resistance:  $1000\text{M}\Omega$  Min
- 6、Withstanding Voltang:  $1000\text{V AC/minute}$
- 7、Material: Wafer Nylon66, UL94V-0  
PIN Brass Tin-plated

编 号	尺寸 (mm)	
	A	B
A2501-02A	2.50	7.50
A2501-03A	5.00	10.00
A2501-04A	7.50	12.50
A2501-05A	10.00	15.00
A2501-06A	12.50	17.50
A2501-07A	15.00	20.00
A2501-08A	17.50	22.50
A2501-09A	20.00	25.00
A2501-10A	22.50	27.50
A2501-11A	25.00	30.00
A2501-12A	27.50	32.50
A2501-20A	47.50	52.50

制图 DRAWN	变更内容 DESCRIPTION	日期 DATE	GENEAL TOLERANCE		制图 DRAWING	钱岳生 2013、07、01	料号 PART NO.	A2501-NA	版本 REV.	A
			$X \pm 0.25$	$X \pm 2'$	审核 CHECK	张名 2013、07、03	品名 TITLE	TJC3直针 WAFER DIP TYPE	页次 SHEET	1/1
			$.X \pm 0.20$	$.X \pm 1'$	核准 APPROVAL	张名 2013、07、05	客户料号 CUTM. NO.	型号: KH-XH-9A-Z	 <b>深圳市金航标电子有限公司</b>	
			$.XX \pm 0.15$	$.XX \pm 0.5'$	单位 UNITS	MM	比例 SCALE	1:1		
			$.XXX \pm 0.10$	$.XXX \pm 0.5'$						