



Oscilent Corporation

PRODUCT SPECIFICATION

REV A January 2011

Oscilent Controlled Document

| Ordering Code / Part Number | Product Description |
|-----------------------------|--|
| 813-SL75.0M-20G | 75.0 MHz IF SAW Filter 20.6MHz Bandwidth |

Specification Contents

- o Mechanical Dimensions
- o Test Circuit
- o Maximum Ratings
- o Electrical Specification
- o Frequency Response

Notes

- o Electrostatic Sensitive Device (ESD) 
- o Avoid excessive ultrasonic exposure
- o Solderability compatible with JEDEC J-STD-020C Pb-free process, 260°C peak reflow temperature
- o This product complies with EU directive 2002/95/EC (RoHS compliance)



Oscilent Corporation
Telephone: 1.949.252.0522
Fax: 1.949.252.0522
Email: sales@oscilent.com

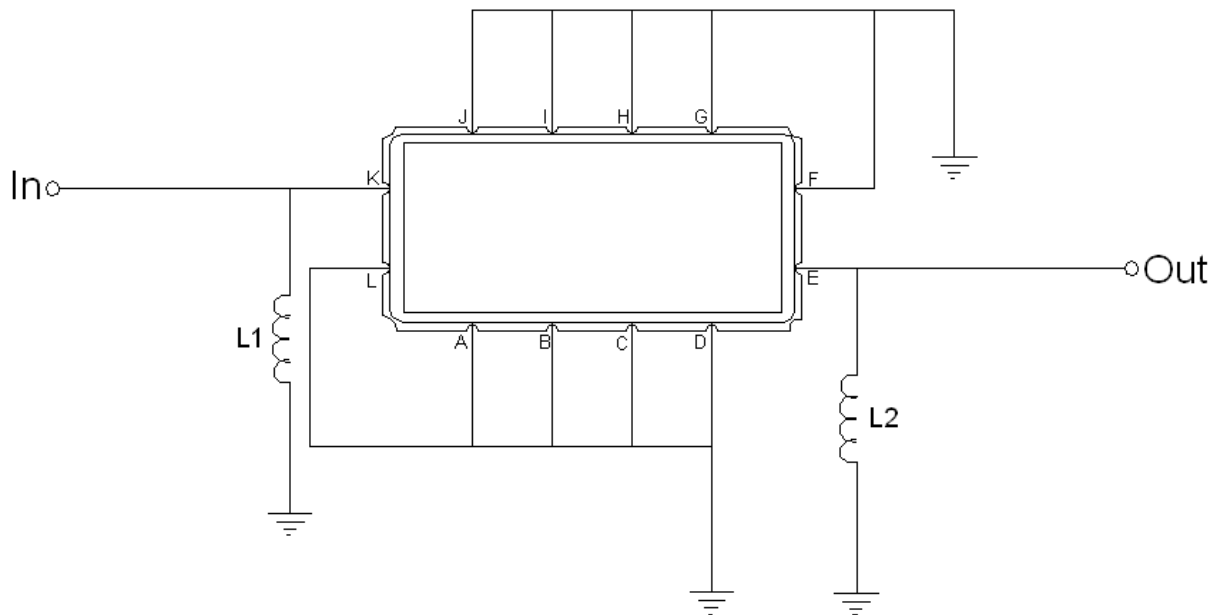


Mechanical Dimensions (mm)



| Pin Description | |
|------------------------------|--------|
| A, B, C, D, F, G, H, I, J, L | Ground |
| K | Input |
| E | Output |

Test Circuit



| Test Fixture & Values | |
|-----------------------|------------|
| Input | L1 = 82 nH |
| Output | L2 = 56 nH |
| Source/Load Impedance | 50 Ω |



Maximum Ratings

| Parameters Description | Unit | Minimum | Typical | Maximum |
|--|------|---------|---------|---------|
| Operating Temperature Range | °C | -30 | - | +80 |
| Storage Temperature Range | °C | -40 | - | +85 |
| Maximum DC Voltage | V | - | - | 10 |
| Maximum Input Power | dBm | - | - | 10 |
| Source Impedance (single ended) ⁽¹⁾ | Ω | - | 50 | - |
| Load Impedance (single ended) ⁽¹⁾ | Ω | - | 50 | - |

Notes: With Matching Network (Ref. Testing Environment Circuit as shown above).

Those impedances could be modified with different impedance values and/or structures, if necessary.

Electrical Specification

| Parameters Description | Unit | Minimum | Typical | Maximum |
|---|------|---------|---------|---------|
| Center Frequency (Fo) | MHz | - | 75.00 | - |
| Insertion Loss at Fo | dB | - | 13.5 | 15.0 |
| Group Delay Variation at Fo±9.75MHz | nsec | - | 35 | 50 |
| Absolute Delay at Fo | usec | - | 0.95 | - |
| Passband Ripple Variation at Fo±9.75MHz | dB | - | 0.3 | 1.0 |
| Bandwidth at -1dB | MHz | 20 | 20.6 | - |
| Bandwidth at -3dB | MHz | 21 | 21.4 | - |
| Bandwidth at -40dB | MHz | - | 25.1 | 25.5 |
| Ultimate Rejection | dB | 42 | 48 | - |



Frequency Response

