

**PLEASE CHECK WWW.MOLEX.COM FOR LATEST PART INFORMATION**

**Part Number:** [0026112093](#)  
**Status:** **Active**  
**Overview:** [kk](#)  
**Description:** 3.96mm (.156") Pitch KK® PC Board Connector, Top Entry, Nylon Connector, 1.0µm (40µ") Tin (Sn), 9 Circuits

**Documents:**

[3D Model](#) [Product Specification PS-99020-0087 \(PDF\)](#)  
[Drawing \(PDF\)](#) [RoHS Certificate of Compliance \(PDF\)](#)

**General**

Product Family PCB Receptacles  
 Series [3215](#)  
 Application Board-to-Board  
 Overview [kk](#)  
 Product Name KK®

**Physical**

Circuits (Loaded) 9  
 Color - Resin Natural  
 Glow-Wire Compliant No  
 Keying to Mating Part Yes  
 Lock to Mating Part Yes  
 Material - Metal Phosphor Bronze  
 Material - Plating Mating Tin  
 Material - Plating Termination Tin  
 Material - Resin Nylon  
 Number of Rows 1  
 Orientation Vertical  
 PC Tail Length (in) 0.120 In  
 PC Tail Length (mm) 3.05 mm  
 PCB Locator No  
 PCB Retention None  
 PCB Thickness Recommended (in) 0.062 In  
 PCB Thickness Recommended (mm) 1.60 mm  
 Packaging Type Bag  
 Pitch - Mating Interface (in) 0.156 In  
 Pitch - Mating Interface (mm) 3.96 mm  
 Plating min: Mating (µin) 40.00  
 Plating min: Mating (µm) 1.000  
 Plating min: Termination (µin) 40.00  
 Plating min: Termination (µm) 1.00  
 Polarized to PCB No  
 Temperature Range - Operating 0°C to +75°C  
 Termination Interface: Style Through Hole

**Electrical**

Current - Maximum per Contact 5A  
 Voltage - Maximum 250V

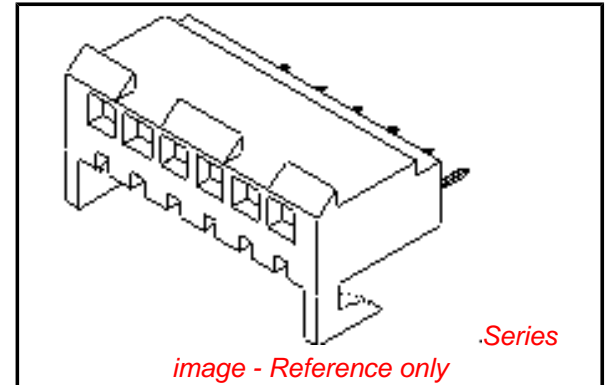
**Solder Process Data**

Lead-free Process Capability Wave Capable (TH only)

**Material Info**

Old Part Number 3215HR09AC

**Reference - Drawing Numbers**



**EU RoHS**

**ELV and RoHS  
Compliant**  
**REACH SVHC**  
 Not Reviewed  
**Halogen-Free  
Status**

**China RoHS**



**Need more information on product  
environmental compliance?**

Email [productcompliance@molex.com](mailto:productcompliance@molex.com)  
 For a multiple part number RoHS Certificate of Compliance, [click here](#)

Please visit the [Contact Us](#) section for any non-product compliance questions.

**Search Parts in this Series**

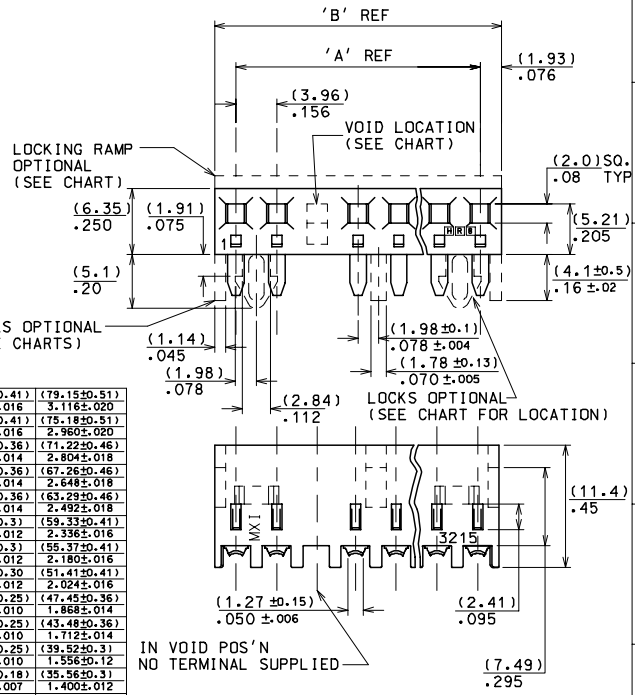
[3215Series](#)

This document was generated on 06/08/2010

**PLEASE CHECK [WWW.MOLEX.COM](http://WWW.MOLEX.COM) FOR LATEST PART INFORMATION**

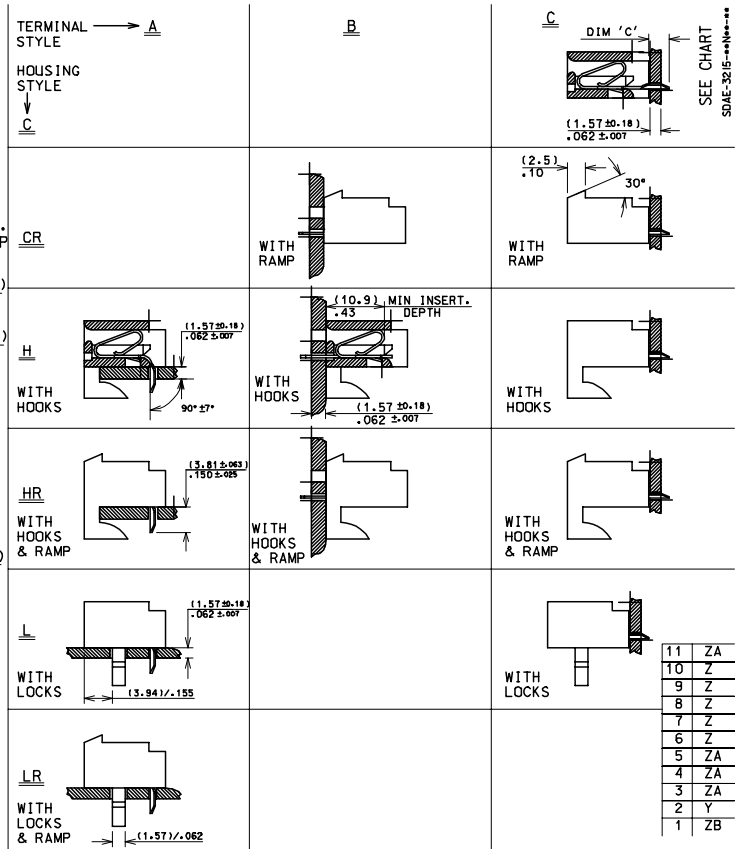
20	(75.29±.41)	(79.15±.51)
	2.96±.016	3.116±.020
19	(71.32±.41)	(75.18±.51)
	2.808±.016	2.960±.020
18	(67.36±.36)	(71.22±.46)
	2.652±.014	2.804±.018
17	(63.40±.36)	(67.26±.46)
	2.496±.014	2.648±.018
16	(59.44±.36)	(63.29±.46)
	2.340±.014	2.492±.018
15	(55.47±.33)	(59.33±.41)
	2.184±.012	2.336±.016
14	(51.51±.30)	(55.37±.41)
	2.028±.012	2.180±.016
13	(47.55±.30)	(51.41±.41)
	1.872±.012	2.024±.016
12	(43.59±.25)	(47.45±.36)
	1.716±.010	1.868±.014
11	(39.62±.25)	(43.48±.36)
	1.560±.010	1.712±.014
10	(35.66±.25)	(39.52±.31)
	1.404±.010	1.556±.012
9	(31.70±.18)	(35.56±.3)
	1.248±.007	1.400±.012
8	(27.74±.18)	(31.60±.31)
	1.092±.007	1.244±.012
7	(23.77±.18)	(27.64±.3)
	.936±.007	1.088±.012
6	(19.81±.13)	(23.67±.25)
	.780±.005	.932±.011
5	(15.85±.13)	(19.71±.25)
	.624±.005	.776±.010
4	(11.89±.13)	(15.75±.25)
	.468±.005	.620±.010
3	(7.92±.13)	(11.79±.25)
	.312±.005	.464±.010

No OF DIM. 'A' DIM. 'B'  
CCTS



IN VOID POS'N  
NO TERMINAL SUPPLIED

NOTES:  
 1. THESE ASSEMBLIES STACKABLE END TO END ON (3.96)/.156 CENTRE TO CENTRE PROGRESSION.  
 2. FOR CHARTS & PANEL DRILLING DETAILS SEE SHEET 2 AND SUBSEQUENT SHEETS.  
 3. TERMINAL PULL OUT FORCE- 4lbs MIN.  
 4. TERMINALS ARE LUBRICATED WITH MXI-3.  
 5. CONNECTORS FOR USE WITH (1.14)/.045 SQ. OR RD. PINS  
 6. THIS PART CONFORMS TO PROD.SPEC.99020-0087



REVISION NO. DATE BY

E2004-0792  
P. SHEAHAN 04/03/98

4 : 1 x  
G. HART 24/11/82  
M GOONEY 26/11/98  
MWILHITE 26/11/98  
SE32151 .DGN SEE CHART SDAE-3215-\*\*\*N\*\*\* I OF 11

25  
36  
1/2

11 ZA  
10 Z  
9 Z  
8 Z  
7 Z  
6 Z  
5 ZA  
4 ZA  
3 ZA  
2 Y  
1 ZB

ZB

SHT. 1 OF 1		MRI-SDAE-3215-***N***			
<b>MODIFICATION RECORD INDEX</b>					
ECN	ISS.	DATE	INIT.	SHTS. AFFECTED	DESCRIPTION OF MOD.
MESL-077	F	2 .12.82	GH	ALL	REDRAW
MEML-112	G	26.4 .83	GH	ALL	REVISION
MEML-594	H	6 .6 .83	GH	ALL	VARIOUS
MEML-608	J	21.6 .83	GH	ALL	VARIOUS
MEML-681	K	31.8 .83	MAL	ALL	VARIOUS
MEML-901	L	25.6 .84	MC	ALL	VARIOUS
MEML-382	M	2 .10.84	MC	ALL	VARIOUS
MEML-509	N	29.5 .85	MC	ALL	VARIOUS
MEML-510	P	31.5 .85	MC	ALL	VARIOUS
MEML-1162	R	25.11.85	JP	ALL	VARIOUS
MEML-617	S	9 .1.86	MC	ALL	VARIOUS
MEML-625	T	20.1.86	MC	ALL	VARIOUS
E10010	U	11.1.91	POB	ALL	VARIOUS
E10018	V	18.1.91	POB	ALL	VARIOUS
E50203	W	08.12.94	JS	ALL	VARIOUS
E90137	Y	1.11.98	TM	ALL	REDRAWN ON CAD
E2001-0463	Z	1.11.00	MF	1,3,4,5,6,7,8,9,10,11	UPDATED BORDER
E2003-0992	ZA	03.05.29	PS	1	NEW PROD.SPEC.99020-0087 ADDED
			REVISE ONLY ON CAD SYSTEM		
MOLEX EUROPE		DRAWING FILENAME			
THIS DRAWING CONTAINS INFORMATION THAT IS PROPRIETARY TO MOLEX INC. A SHOULD NOT BE USED WITHOUT WRITTEN PERMISSION		NF0028		SE32151 . DGN	
				ISSUE ZA	

13		12		11		10		9		8		7		6		5		4		3		2		1		
PART No.	ENG No.	No. OF CCTS	LOCK RAMP	VOID CCT POS'N		PART No.	ENG No.	No. OF CCTS	LOCK RAMP	VOID CCT POS'N	CENTRE HOOK LOCATED BETWEEN CCT No's	PART No.	ENG No.	No. OF CCTS	LOCK RAMP	VOID CCT POS'N	CENTRE HOOK LOCATED BETWEEN CCT No's	PART No.	ENG No.	No. OF CCTS	LOCK RAMP	VOID CCT POS'N	CENTRE HOOK LOCATED BETWEEN CCT No's			
26-11-1034	AE-3215-CR3AC	3	YES	NONE		26-11-2038	AE-3215-HR3AC	3	NO	NONE	---	26-11-2033	AE-3215-HR3AC		YES	NONE	---									
↑ -1044	↑ -CR4AC	4	↑	↑		↑ -2048	↑ -H4AC	4	↑	↑	---	↑ -2043	↑ -HR4AC	4	↑	↑	---	26-11-2044	AE-3215-L4AC	4	NO	NONE	1&2 3&4			
-1054	-CR5AC	5				-2058	-H5AC	5			---	-2053	-HR5AC	5			---	↑ -2054	↑ -L5AC	5	↑	↑	1&2 4&5			
-1064	-CR6AC	6				-2068	-H6AC	6			---	-2063	-HR6AC	6			---	-2064	-L6AC	6			1&2 5&6			
-1074	-CR7AC	7				-2078	-H7AC	7			---	-2073	-HR7AC	7			---	-2074	-L7AC	7			1&2 6&7			
-1084	-CR8AC	8				-2088	-H8AC	8			4&5	-2083	-HR8AC	8			4&5	-2084	-L8AC	8			1&2 7&8			
-1094	-CR9AC	9				-2098	-H9AC	9			4&5	-2093	-HR9AC	9			4&5	-2094	-L9AC	9			1&2 5&6 8&9			
-1104	-CR10AC	10				-2108	-H10AC	10			5&6	-2103	-HR10AC	10			5&6	-2104	-L10AC	10			1&2 5&6 9&10			
-1114	-CR11AC	11				-2118	-H11AC	11			5&6	-2113	-HR11AC	11			5&6	-2114	-L11AC	11			1&2 6&7 10&11			
-1124	-CR12AC	12				-2128	-H12AC	12			4&5 8&9	-2123	-HR12AC	12			4&5 8&9	-2124	-L12AC	12			1&2 6&7 11&12			
-1134	-CR13AC	13				-2138	-H13AC	13			4&5 9&10	-2133	-HR13AC	13			4&5 9&10	-2134	-L13AC	13			1&2 6&7 12&13			
-1144	-CR14AC	14				-2148	-H14AC	14			5&6 9&10	-2143	-HR14AC	14			5&6 9&10	-2144	-L14AC	14			1&2 7&8 13&14			
-1154	-CR15AC	15				-2158	-H15AC	15			5&6 10&11	-2153	-HR15AC	15			5&6 10&11	-2154	-L15AC	15			1&2 7&8 14&15			
-1164	-CR16AC	16				-2168	-H16AC	16			6&7 11&12	-2163	-HR16AC	16			6&7 11&12	-2164	-L16AC	16			1&2 7&8 15&16			
-1174	-CR17AC	17				-2178	-H17AC	17			6&7 11&12	-2173	-HR17AC	17			6&7 11&12	-2174	-L17AC	17			1&2 7&8 16&17			
-1184	-CR18AC	18				-2188	-H18AC	18			6&7 10&11 15&16	-2183	-HR18AC	18			6&7 10&11 15&16	-2184	-L18AC	18			1&2 8&9 17&18			
↓ -1194	↓ -CR19AC	19	↓	↓		↓ -2198	↓ -H19AC	19	↓	↓	5&6 10&11 15&16	↓ -2193	↓ -HR19AC	19	↓	↓	5&6 10&11 15&16	↓ -2194	↓ -L19AC	19	↓	↓	1&2 8&9 18&19			
26-11-2204	AE-3215-CR20AC	20	YES	NONE		26-11-2208	AE-3215-HR20AC	20	NO	NONE	5&6 10&11 15&16	26-11-2203	AE-3215-HR20AC	20	YES	NONE	5&6 10&11 15&16	26-11-2204	AE-3215-L20AC	20	NO	NONE	1&2 9&10 19&20			
						38-00-0240	AE-3215-H6AC-51	6	NO	3,4	---	26-11-2057	AE-3215-HR5AC-51	5	YES	2,4	---									
						38-00-0241	AE-3215-H13AC-7	13	NO	7	4&5 9&10	38-00-0046	AE-3215-HR11AC-51	11	YES	3,6,9	5&6									
						38-00-0376	AE-3215-H11AC-51	11	NO	3,6,9	5&6	38-00-0059	AE-3215-HR6AC-51	6	YES	3,4	---									
												38-00-0060	AE-3215-HR13AC-7	13	YES	7	4&5 9&10									
												38-00-0061	AE-3215-HR13AC-51	13	YES	2,4,6 8,10,12	4&5 9&10									

PART NO. SEE CHART  
DWG NO. SDAE-3215-\*\*\*N\*\*\*

FOR CONTINUATION OF VOIDS, SEE LAST DRAWING

HOUSING.  
STYLE-CR

HOUSING.  
STYLE-H

HOUSING.  
STYLE-HR

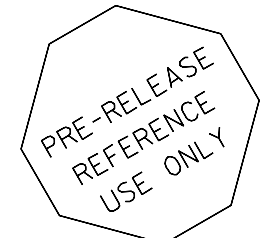
HOUSING.  
STYLE-L

TERMINAL.  
STYLE-C  
DIM 'C' - (3.17±0.50)/.125±.020  
DRILLING DETAIL 'D'  
(SEE SHEET 2)

TERMINAL.  
STYLE-C  
DIM 'C' - (3.17±0.50)/.125±.020  
DRILLING DETAIL 'D'

TERMINAL.  
STYLE-C  
DIM 'C' - (3.17±0.50)/.125±.020  
DRILLING DETAIL 'D'

TERMINAL.  
STYLE-C  
DIM 'C' - (3.17±0.50)/.125±.020  
DRILLING DETAIL 'D'



NOTES:  
1. TERMINAL MUST MEET MOLEX SOLDERABILITY SPEC. No. 152.

MATERIAL:  
HOUSING- NYLON, 94V-2, COLOUR- NATURAL  
TERMINAL- PHOS. BR, PLATING- (P902)  
HOT TIN DIP 1-2.5um (.000040"- .000100")

LEAD FREE CONVERSION EC No. E2004-0792 DRWN: PSHEAHAN 04/03/08 CH'K: APPR:	QUALITY SYMBOLS	GENERAL TOLERANCES: (UNLESS SPECIFIED)		SCALE	DESIGN UNITS	DIMENSIONS:		SHT	REV
	MAJOR	mm	INCH	:	mm	mm	mm		
	CRITICAL	4 PLACES ±0.	±.		mm	mm	mm		
	C	3 PLACES ±0.	±.		mm	mm	mm		
		2 PLACES ±0.	±.		mm	mm	mm		
		1 PLACE ±0.	±.		mm	mm	mm		
		ANGULAR: ± 1/2°		DRAWN BY & DATE		THIRD ANGLE PROJECTION		REVISE ON CAD ONLY	
		DRAFT WHERE APPLICABLE MUST REMAIN WITHIN DIMENSIONS		G. HART 24/11/82		TITLE: CONNECTOR, K-K (3.96)/.156 WITH OR WITHOUT LOCKING WITH P.C. TAIL TERMINALS			
				CHECKED BY & DATE		MATERIAL NO.		DRAWING NO.	
				M. GOONEY 26/11/98		SDAE-3215-***N***		SHEET NO.	
				APPROVED BY & DATE		DRAWING NO.		5 OF	
				MWILHITE 26/11/98		SDAE-3215-***N***			
				CAD FILENAME		SDAE-3215-***N***			
				SE32155.DGN		SDAE-3215-***N***			
				THIS DRAWING CONTAINS INFORMATION THAT IS PROPRIETARY TO MOLEX INCORPORATED AND SHOULD NOT BE USED WITHOUT WRITTEN PERMISSION.					