

PLEASE CHECK WWW.MOLEX.COM FOR LATEST PART INFORMATION

Part Number: **0197500004**
Status: **Active**
Description: ValuKrimp™ Butt Splice for 10-12 AWG

Documents:

[Drawing \(PDF\)](#) [RoHS Certificate of Compliance \(PDF\)](#)

General

Product Family	Splices
Series	<u>19750</u>
Crimp Quality Equipment	Yes
Mil-Spec	N/A
Product Name	VersaKrimp™

Physical

Barrel Type	Closed
Color - Resin	Natural
Insulation	PVC
Material - Resin	PVC
Packaging Type	Bag
Temperature Range - Operating	-40°C to +105°C
Wire Insulation Diameter	5.84mm (.230") max
Wire Size AWG	10, 12

Electrical

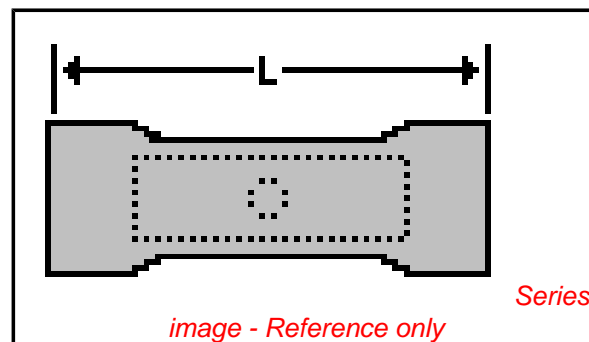
Voltage - Maximum	600V
-------------------	------

Material Info

Old Part Number	VALUKRIMP C BUTT
-----------------	------------------

Reference - Drawing Numbers

Sales Drawing	SD-19750-001
---------------	--------------



EU RoHS

ELV and RoHS Compliant

REACH SVHC

Not Reviewed

Halogen-Free

Status

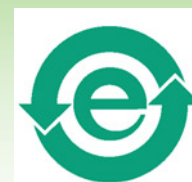
Not Reviewed

Need more information on product environmental compliance?

Email productcompliance@molex.com
 For a multiple part number RoHS Certificate of Compliance, [click here](#)

Please visit the [Contact Us](#) section for any non-product compliance questions.

China RoHS



Search Parts in this Series

19750Series

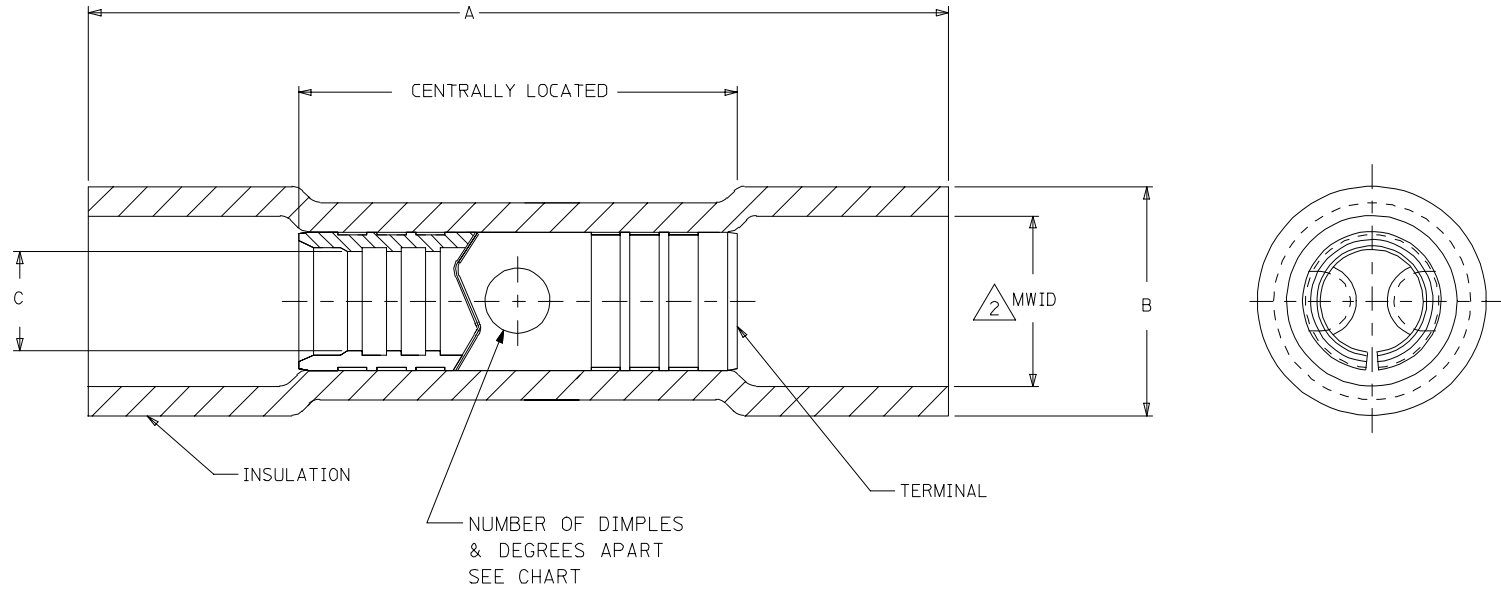
Application Tooling | FAQ

Tooling specifications and manuals are found by selecting the products below. Crimp Height Specifications are then contained in the Application Tooling Specification document.

Global

Description	Product #
Hand Crimp Tool for ValuKrimp™, Butt Splice 10-12 AWG	<u>0640017500</u>

MATERIAL NUMBER	ENGINEERING NUMBER	AWG	A MAX	B REF	$\triangle 2$ MWID	C MIN	NUMBER OF DIMPLES
197500003	19750-0003	22-18	.883/22.42	.193/4.90	.133/3.37	.061/1.55	2 DIMPLES @180° APART
197500001	19750-0001	16-14	.885/24.48	.235/5.97	.175/4.44	.098/2.49	2 DIMPLES @180° APART
197500004	19750-0004	12-10	.984/25.00	.290/7.37	.230/5.84	.148/3.76	3 DIMPLES @120° APART



NOTES:
 1. MATERIAL:
 INSULATION: PVC
 TERMINAL: TIN PRE-PLATED BRASS
 $\triangle 2$. MWID = MAXIMUM WIRE INSULATION DIAMETER

ADDED PART NO.: EC NO: ETC2005-0155 DRAWN: JLOMASTRO 2005/03/02 CHK'D: RDEROSS 2005/03/02 APPR: RDEROSS 2005/03/02	DESCRIPTION REV: C	QUALITY SYMBOLS $\blacktriangledown = 0$ $\nabla = 0$	GENERAL TOLERANCES (UNLESS SPECIFIED)		DIMENSION STYLE IN/MM	SCALE 8:1	DESIGN UNITS INCH	THIRD ANGLE PROJECTION
		4 PLACES \pm --- \pm --- 3 PLACES \pm --- \pm .010 2 PLACES \pm 0.25 \pm .01 1 PLACE \pm 0.3 \pm ---	DRAWN BY: JLOMASTRO DATE: 05/03/02	TITLE VALUKRIMP BUTT SPLICE				
		ANGULAR \pm 1/2°	CHECKED BY: RDEROSS DATE: 05/03/02	MOLEX INCORPORATED				
		DRAFT WHERE APPLICABLE MUST REMAIN WITHIN DIMENSIONS	APPROVED BY: RDEROSS DATE: 05/03/03	MATERIAL NO.: SEE CHART	DOCUMENT NO.: SD-19750-001	SHEET NO.: 1 OF 1		