

# 2SD1710A

Rev.F Mar.-2016

## 描述 / Descriptions

TO-220 塑封封装 NPN 半导体三极管。Silicon NPN transistor in a TO-220 Plastic Package.

## 特征 / Features

耐压高,开关速度快。

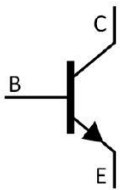
High voltage, high speed switching.

## 用途 / Applications

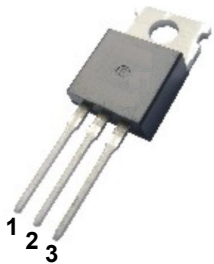
用于彩电行偏转电路。

Use in horizontal deflection circuits of color TV.

## 内部等效电路 / Equivalent Circuit



## 引脚排列 / Pinning



PIN1 : Base

PIN 2 : Collector

PIN 3 : Emitter

## 放大及印章代码 / $h_{FE}$ Classifications & Marking

见印章说明。 See Marking Instructions.

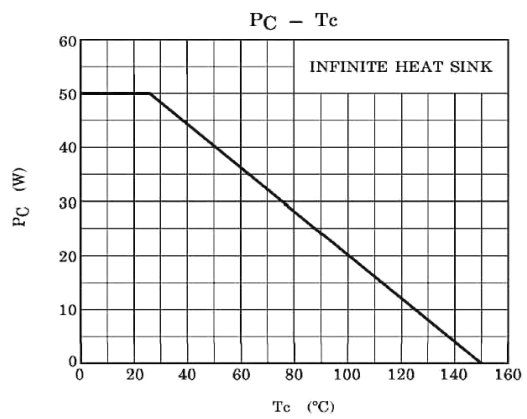
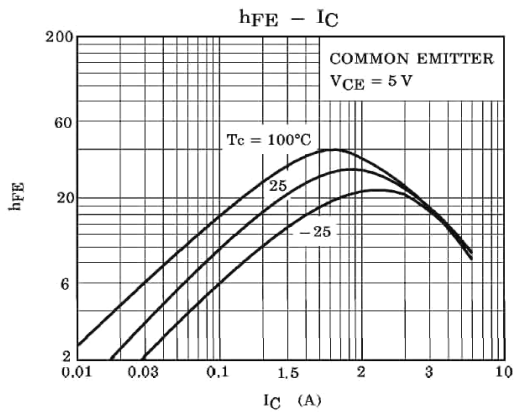
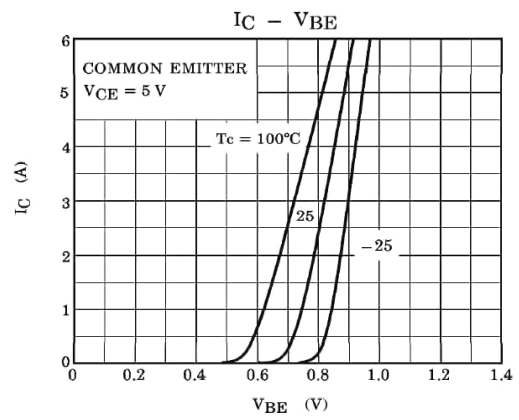
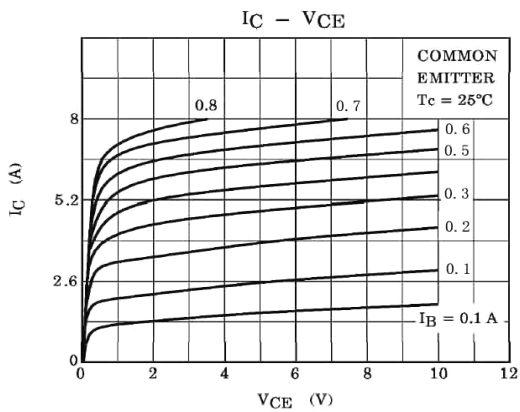
**极限参数 / Absolute Maximum Ratings(Ta=25°C)**

| 参数<br>Parameter                | 符号<br>Symbol          | 数值<br>Rating | 单位<br>Unit |
|--------------------------------|-----------------------|--------------|------------|
| Collector to Base Voltage      | $V_{CBO}$             | 900          | V          |
| Collector to Emitter Voltage   | $V_{CEO}$             | 500          | V          |
| Emitter to Base Voltage        | $V_{EBO}$             | 9.0          | V          |
| Collector Current - Continuous | $I_C$                 | 8.0          | A          |
| Peak Collector Current         | $I_{CM}$              | 12           | A          |
| Collector Power Dissipation    | $P_C(T_C=25^\circ C)$ | 50           | W          |
| Junction Temperature           | $T_j$                 | 150          | °C         |
| Storage Temperature Range      | $T_{stg}$             | -55~150      | °C         |

**电性能参数 / Electrical Characteristics(Ta=25°C)**

| 参数<br>Parameter                         | 符号<br>Symbol  | 测试条件<br>Test Conditions                         | 最小值<br>Min | 典型值<br>Typ | 最大值<br>Max | 单位<br>Unit |
|---|---------------|---|------------|------------|------------|------------|
| Collector to Base Breakdown Voltage     | $V_{CBO}$     | $I_C=1mA$ $I_B=0$                               | 900        |            |            | V          |
| Collector to Emitter Breakdown Voltage  | $V_{CEO}$     | $I_C=10mA$ $I_B=0$                              | 500        |            |            | V          |
| Collector Cut-Off Current               | $I_{CEO}$     | $V_{CE}=500V$ $I_E=0$                           |            |            | 250        | μA         |
| Emitter Cut-Off Current                 | $I_{EBO}$     | $V_{EB}=9V$ $I_C=0$                             |            |            | 100        | μA         |
| Collector Cut-Off Current               | $I_{CBO}$     | $V_{CB}=900V$ $I_C=0$                           |            |            | 100        | μA         |
| DC Current Gain                         | $h_{FE(1)}$   | $V_{CE}=5.0V$ $I_C=2.0A$                        | 25         |            | 40         |            |
|   | $h_{FE(2)}$   | $V_{CE}=5.0V$ $I_C=5.0A$                        | 8.0        |            |            |            |
| Collector to Emitter Saturation Voltage | $V_{CE(sat)}$ | $I_C=4.0A$ $I_B=1.0A$                           |            |            | 5.0        | V          |
| Base to Emitter Saturation Voltage      | $V_{BE(sat)}$ | $I_C=4.0A$ $I_B=1.0A$                           |            |            | 1.5        | V          |
| Transition Frequency                    | $f_T$         | $V_{CE}=5V$ $I_C=0.1A$                          | 2.0        |            |            | MHz        |
| Fall Time                               | $t_S$         | $V_{CC}=125V$ $I_C=5A$<br>$I_{B1}=-I_{B2}=0.8A$ |            |            | 3.5        | μs         |
| Storage Time                            | $t_f$         | $R_L=50\Omega$                                  |            |            | 0.7        | μs         |

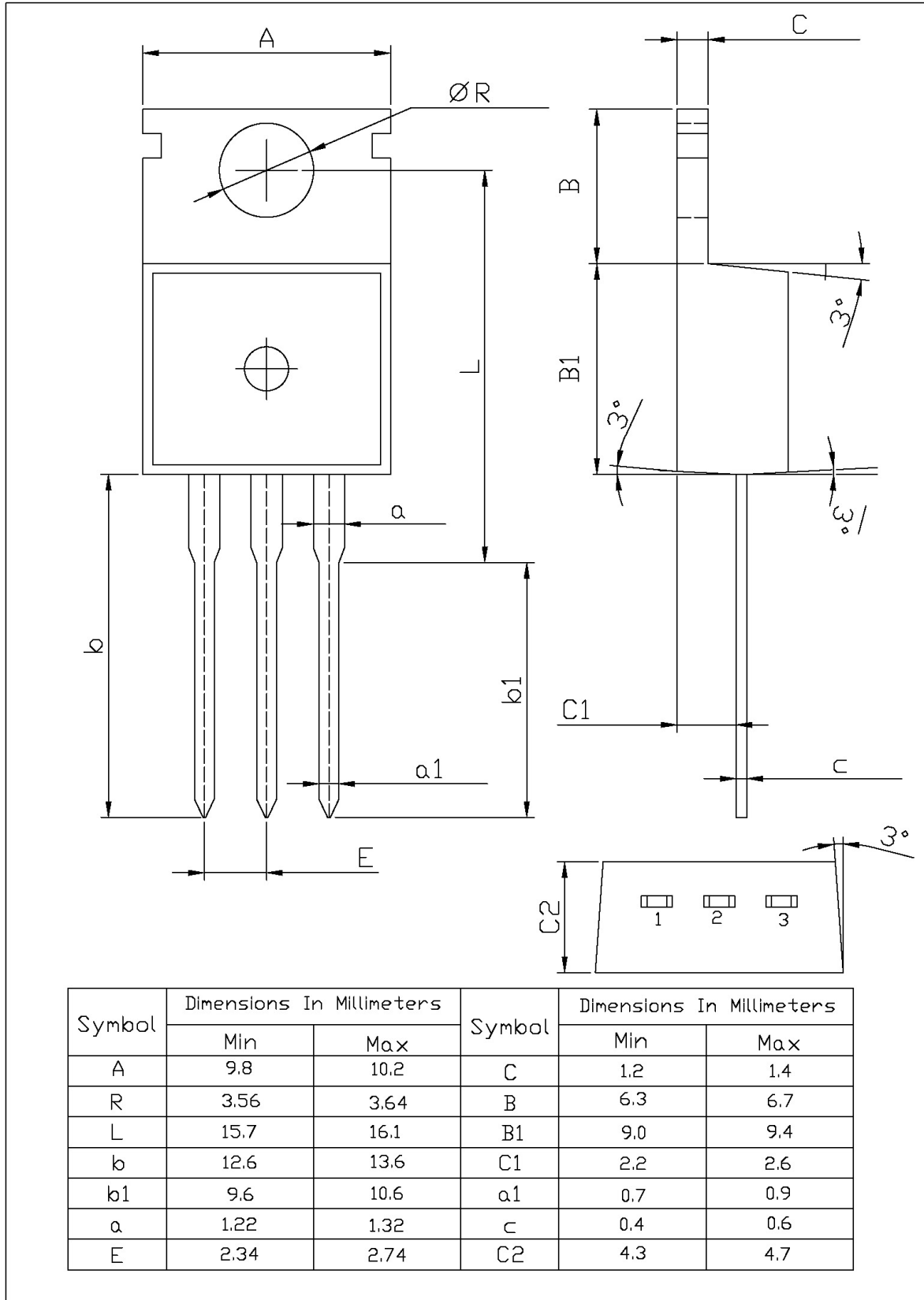
**电参数曲线图 / Electrical Characteristic Curve**



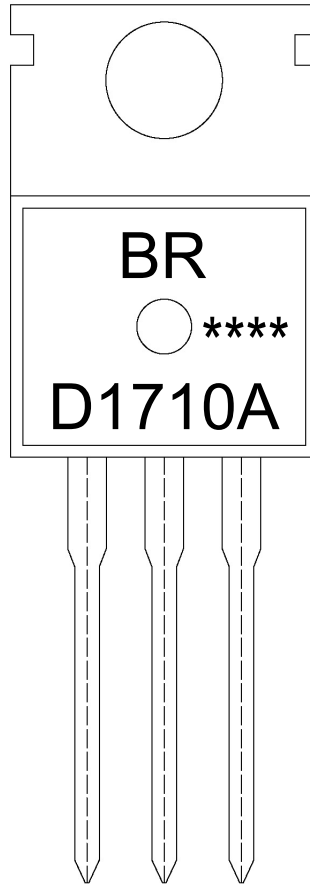
外形尺寸图 / Package Dimensions

T0-220

单位: mm



印章说明 / Marking Instructions



说明：

BR： 为公司代码

D1710A： 为型号代码

\*\*\*\*： 为生产批号代码，随生产批号变化。

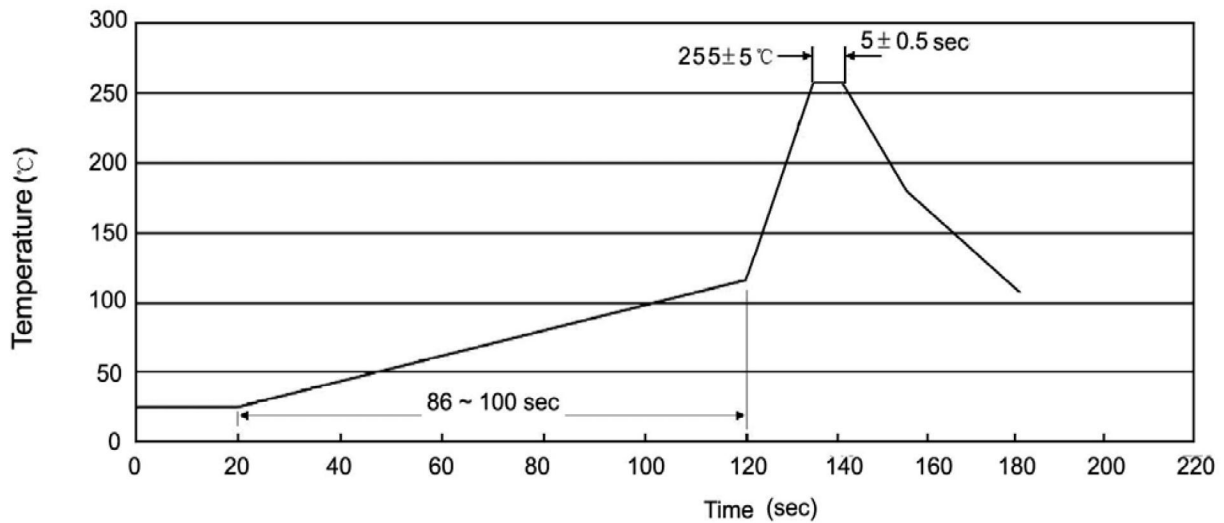
Note:

BR: Company Code

D1710A: Product Type.

\*\*\*\*: Lot No. Code, code change with Lot No.

**波峰焊温度曲线图(无铅) / Temperature Profile for Dip Soldering(Pb-Free)**



说明：

- 1、预热温度 25 ~ 150°C，时间 60 ~ 90sec；
- 2、峰值温度 255±5°C，时间持续为 5±0.5sec；
- 3、焊接制程冷却速度为 2 ~ 10°C/sec.

Note:

- 1.Preheating:25~150°C, Time:60~90sec.
- 2.Peak Temp.:255±5°C, Duration:5±0.5sec.
3. Cooling Speed: 2~10°C/sec.

**耐焊接热试验条件 / Resistance to Soldering Heat Test Conditions**

温度：270±5°C

时间：10±1 sec.

Temp.:270±5°C

Time:10±1 sec

**包装规格 / Packaging SPEC.**

散件包装 / BULK

| Package Type<br>封装形式 | Units 包装数量       |                       |                        |                              |                        | Dimension 包装尺寸 (unit: mm <sup>3</sup> ) |             |             |
|----------------------|------------------|-----------------------|------------------------|------------------------------|------------------------|---|-------------|-------------|
|                      | Units/Bag<br>只/袋 | Bags/Inner Box<br>袋/盒 | Units/Inner Box<br>只/盒 | Inner Boxes/Outer Box<br>盒/箱 | Units/Outer Box<br>只/箱 | Bag 袋                                   | Inner Box 盒 | Outer Box 箱 |
| TO-220/F             | 200              | 10                    | 2,000                  | 5                            | 10,000                 | 135×190                                 | 237×172×102 | 560×245×195 |

套管包装 / TUBE

| Package Type<br>封装形式 | Units 包装数量         |                         |                        |                              |                        | Dimension 包装尺寸 (unit: mm <sup>3</sup> ) |             |             |
|----------------------|--------------------|-------------------------|------------------------|------------------------------|------------------------|---|-------------|-------------|
|                      | Units/Tube<br>只/套管 | Tubes/Inner Box<br>套管/盒 | Units/Inner Box<br>只/盒 | Inner Boxes/Outer Box<br>盒/箱 | Units/Outer Box<br>只/箱 | Tube 套管                                 | Inner Box 盒 | Outer Box 箱 |
| TO-220/F             | 50                 | 20                      | 1,000                  | 5                            | 5,000                  | 532×31.4×5.5                            | 555×164×50  | 575×290×180 |

**使用说明 / Notices**