

**FEATURES**

- Compact size, long life and efficiency
- Single or twin head versions
- Ideal for use in portable air and gas applications
- Up to 6 or 12 lpm free flow, pressure up to 1.3 bar and vacuum up to 576 mbar
- Light Duty (LD) and Heavy Duty (HD) DC brush iron core motor options



**WETTED MATERIALS**

Diaphragm: EPDM  
 Valve: EPDM  
 Head: PPA

**ELECTRICAL**

|                           |                                      |
|---------------------------|--------------------------------------|
| Voltage                   |                                      |
| Nominal                   | 12 or 24 V <sub>DC</sub>             |
| Max.                      |                                      |
| T6...LD...                | 17 or 32 V <sub>DC</sub>             |
| T6...HD...                | 19 or 38 V <sub>DC</sub>             |
| Max. power @ nom. voltage |                                      |
| T6SH...LD...              | 5.2 W                                |
| T6TH...LD...              | 8.4 W                                |
| T6SH...HD...              | 4 W                                  |
| T6TH...HD...              | 7 W                                  |
| Electrical termination    | solder tabs or<br>10 inch wire leads |

**SPECIFICATIONS**

|                                    |             |
|------------------------------------|-------------|
| Max. ambient and media temperature | 0 to +50 °C |
| Weight                             |             |
| T6SH...LD...                       | 163 g       |
| T6SH...HD...                       | 195 g       |
| T6TH...LD...                       | 186 g       |
| T6TH...HD...                       | 218 g       |

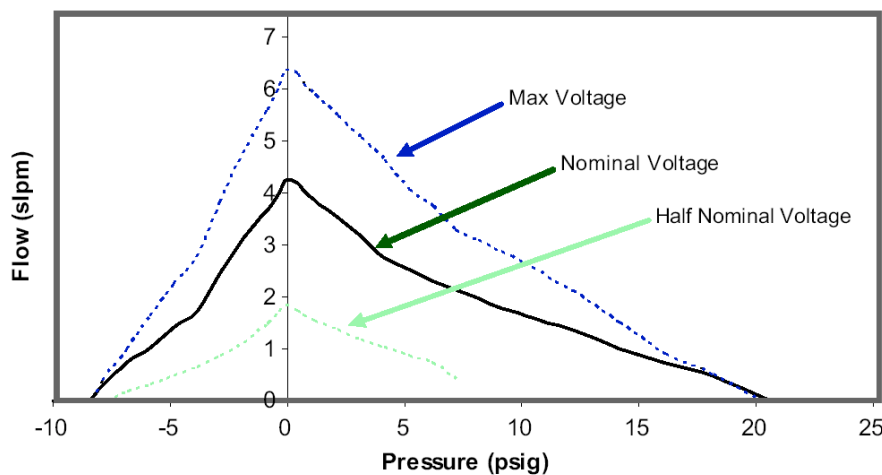
**PERFORMANCE CHARACTERISTICS**

(Standard conditions: 22 °C (70 °F) and 14.7 psia)

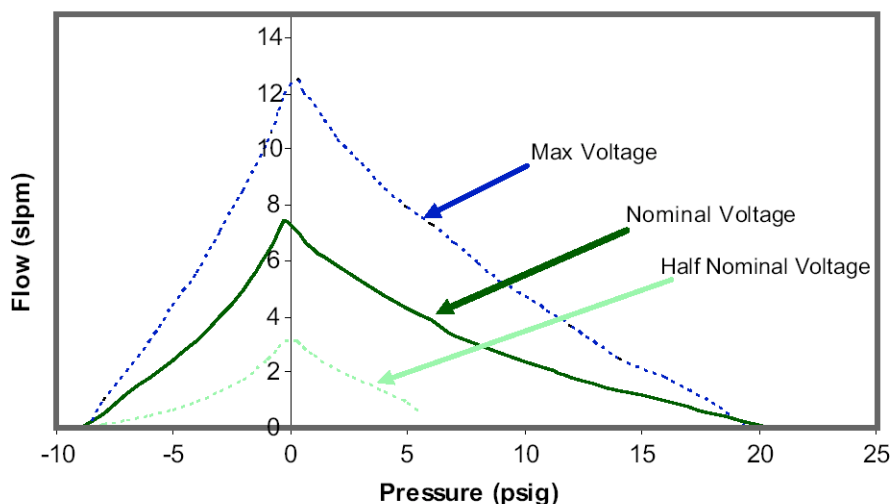
| Part no.     | Max. flow | Max. pressure       |                     | Max. vacuum              |                     |
|--------------|-----------|---------------------|---------------------|--------------------------|---------------------|
|              |           | intermittent        | continuous          |                          |                     |
| T6SH...LD... | 6 lpm     | 1.3 bar<br>(19 psi) | 140 mbar<br>(2 psi) | 576 mbar<br>(17 inch Hg) |                     |
| T6TH...LD... | 12 lpm    |                     | 1.3 bar<br>(19 psi) |                          | 1.3 bar<br>(19 psi) |
| T6SH...HD... | 6 lpm     |                     |                     |                          |                     |
| T6TH...HD... | 12 lpm    |                     |                     |                          |                     |

**FLOW CURVES**

**Single head  
(T6SH...)**



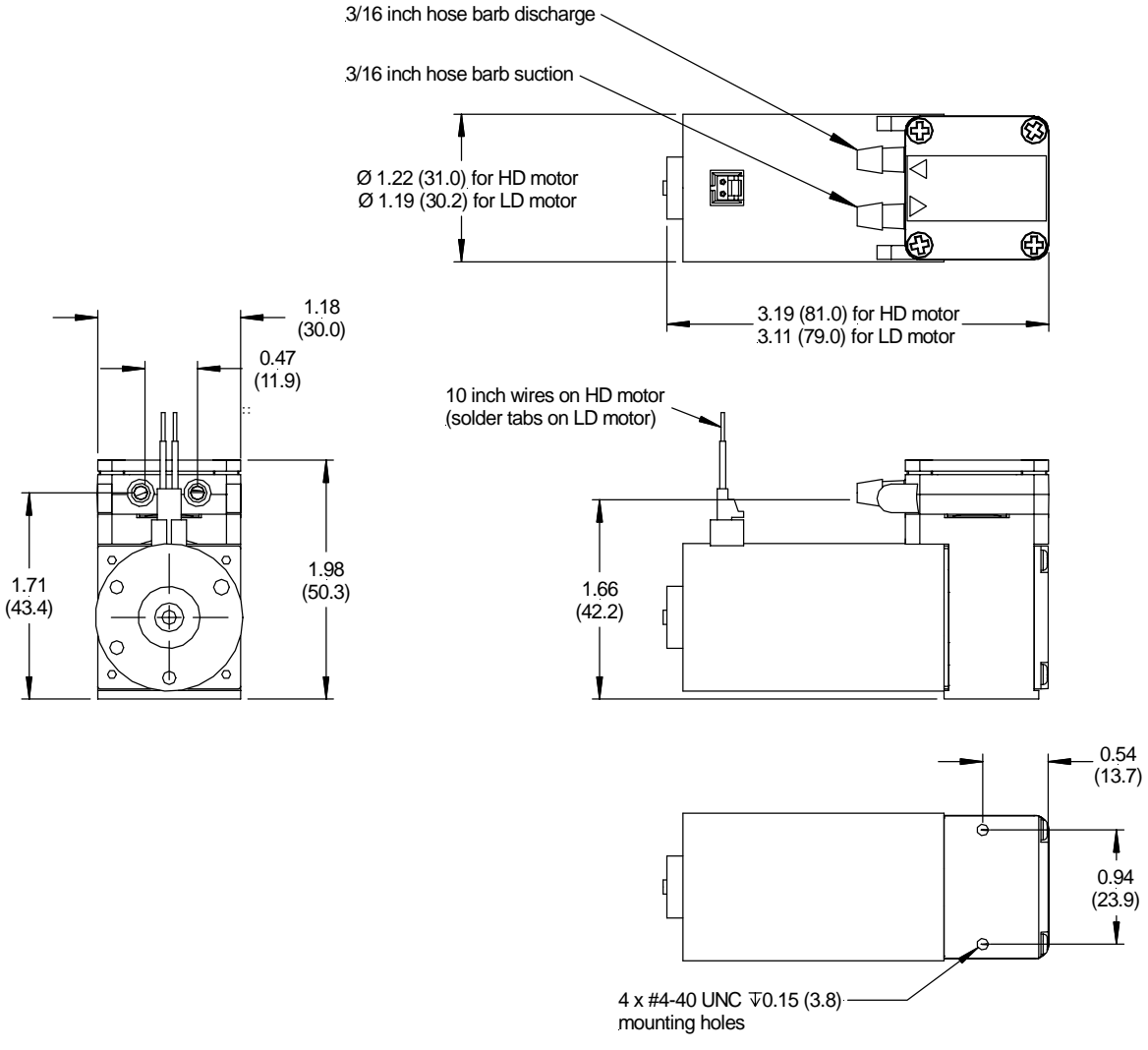
**Twin head  
(T6TH...)**

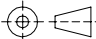


**Note:** slpm denotes Standard Liters per Minute. It is a unit for the flow rate at standard conditions of temperature and pressure.

OUTLINE DRAWING

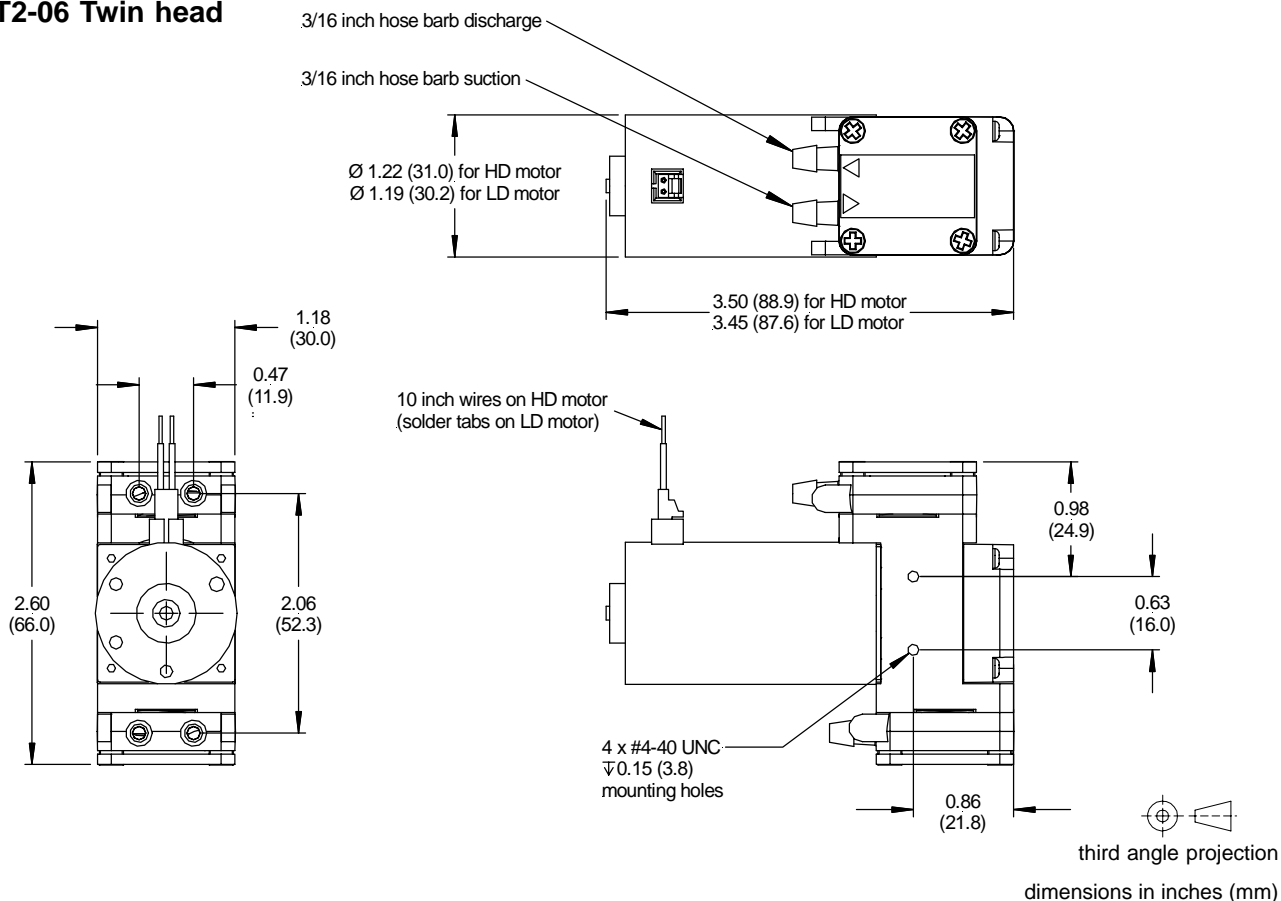
T2-06 Single head



  
third angle projection  
dimensions in inches (mm)

OUTLINE DRAWING (cont.)

T2-06 Twin head



ORDERING INFORMATION

| Options  | Series |       | Head configurations |             | Mounting options |                          | Motors*   |                  | Nominal/max.* voltages   |                         | Free flow*              |                     | Valve |      | Diaphragm |      | Body/head |     |  |
|----------|--------|-------|---------------------|-------------|------------------|--------------------------|---|------------------|--|-------------------------|-------------------------|---------------------|-------|------|-----------|------|-----------|-----|--|
|          | T6     | T2-06 | SH                  | Single head | S                | Standard (barbs on head) | LD  | Light duty brush | 12   | 12 / 19 V <sub>DC</sub> | 1                       | 6 lpm (single head) | E     | EPDM | E         | EPDM | A         | PPA |  |
|          |        |       | TH                  | Twin head   |                  |                          | HD  | Heavy duty brush | 24   | 24 / 38 V <sub>DC</sub> |                         | 12 lpm (twin head)  |       |      |           |      |           |     |  |
|          |        |       |                     |             |                  |                          | * Consult Sensortech for premium brush and BLCD motor options |                  | * Continuous duty at maximum rated voltage may reduce motor life |                         | * at max. rated voltage |                     |       |      |           |      |           |     |  |
| Example: | T6     |       | SH                  |             | S                |                          | HD  |                  | 12   |                         | 1                       |                     | E     |      | E         |      | A         |     |  |

**Note:** Custom specific modifications are widely available. Please contact your nearest Sensortech sales office for further information.

Sensortech reserves the right to make changes to any products herein. Sensortech does not assume any liability arising out of the application or use of any product or circuit described herein, neither does it convey any license under its patent rights nor the rights of others.