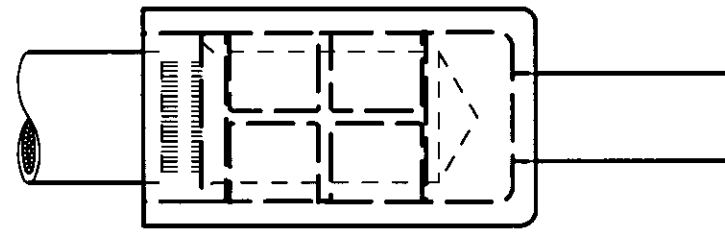
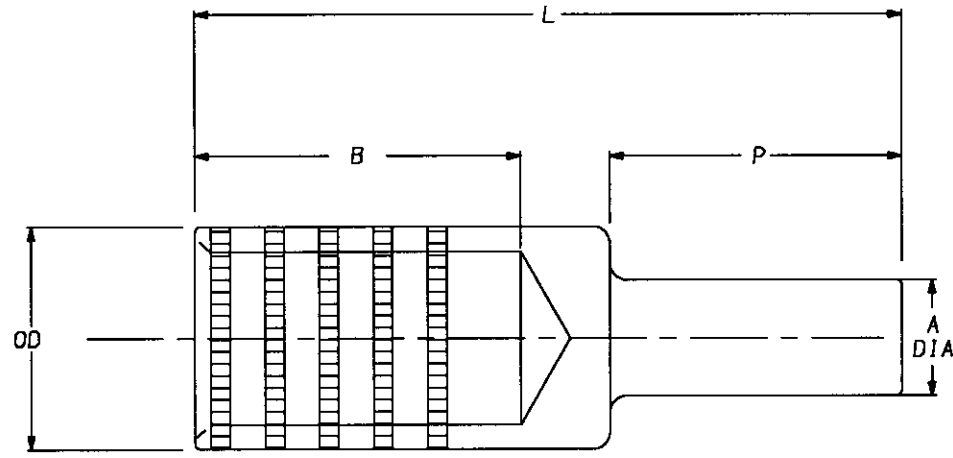


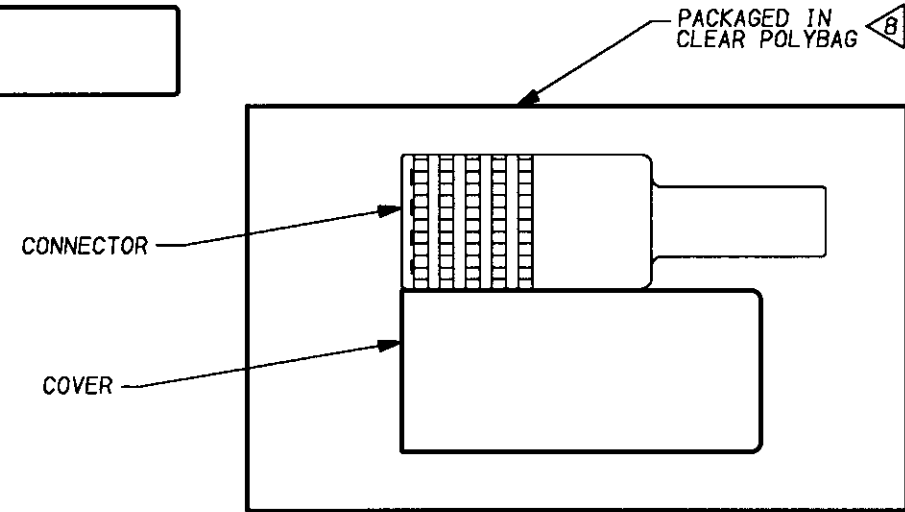
REV.	DATE	DESCRIPTION	BY	C.K'D.
1	6/16/93	CHANGED CAT # FROM YE-P-FX TO YE-P	RDP	JLM
2	3/8/99	UPDATED FORMAT, CHANGED CONNECTOR APPEARANCE, PER EDO. (1789)	KRB	KLH



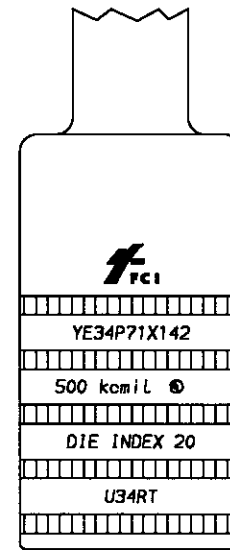
VIEW AFTER INSTALLATION



COVER



PACKAGED IN CLEAR POLYBAG



TYPICAL LETTERING VIEW
CONNECTOR MARKING

NOTES:

1. MATERIAL: CONNECTOR = COPPER, COVER = EPDM
2. FINISH: TIN PLATE
- 3 TO USE "U" DIES IN Y45 HYPRESS, CATALOG NUMBER PT6515 DIE ADAPTOR IS REQUIRED.
- 4 TO USE "U" DIES IN Y46 HYPRESS, CATALOG NUMBER P-UADP DIE ADAPTOR IS REQUIRED.
- 5 THE MD6-6R2 RACHET TOOL IS REQUIRED ON THESE SIZES. THE STANDARD MD6 OR MD6R RACHET TOOLS WILL NOT WORK.
6. DIMENSIONS ARE FOR REFERENCE ONLY.
7. UL APPROVAL PENDING ON THESE ITEMS.
- 8 THE COVER IS INCLUDED. IT MAY BE A SLIP ON OR HEAT SHRINK TUBING STYLE.
- 9 PIN SIZE IS EQUIVALENT TO CONNECTING CABLE SIZE.
- 10 PIN SIZE IS EQUIVALENT TO ONE SIZE SMALLER THAN THE CONNECTING CABLE.
- 11 PIN SIZE IS EQUIVALENT TO TWO SIZES SMALLER THAN THE CONNECTING CABLE.
- 12 DIMENSIONS IN BRACKETS [] ARE IN MILLIMETERS.

SEE SHEETS 2, 3, & 4 FOR TABLES.

COPPER ADAPTOR PLUGS			
CAT NO: YE-P-FX & YE-P	SCALE: N/A		
DRAWN: J MICHAUD	3/15/93	CHECKED: D FILLION	3/30/93
DSGN APPVL: G DITROIA	4/13/93	MFG APPVL: N/A	
Q.A. APPVL: A LLOYD	4/19/93	MKTG APPVL: L HERRON	4/6/93
CAD FILE: SE208340-01_2	PH REF: N/A		
FRAMATOME CONNECTORS USA INC. BURNDY ELECTRICAL		MOL REF: N/A	
MANCHESTER, NH 03108 U. S. A.		PROJECT: DO 52573	
1-800-346-4175		DRAWING NO. SE208340	REV 2
SHEET 1 OF 4			

REV.	DATE	DESCRIPTION	BY	C.K'D.
1	6/17/93	ADDED TOOL MD7-34R AND CODE CONDUCTOR	RDP	JLM
2	4/16/98	UPDATED FORMAT, ADDED CAT. NO. YES4P11250 PER EPO (1195)	KRB	KLH

ACCOMMODATES COPPER WIRE SIZES			CATALOG NUMBER	PIN SIZE EQUIVALENT	DIMENSIONS					COLOR CODE	DIE INDEX	MECH TOOLS (# CRIMPS)				HYDRAULIC TOOLS (# CRIMPS)				CABLE STRIP LENGTH	
FLEX CABLE	CODE AWG	NAVY			A DIA [MM]	B±.025 [MM]	L [MM]	P [MM]	OD±.01 [MM]			MY	Y2MR	MD7-34R	MD6/MD7	Y35/Y39 Y750	Y45	Y46	Y60BHU		Y644M (ACCOMMODATES EXPANDED WIRE RANGE)
#4 STR. (91/24-105/24)	#4	40	YEV4CP20X75FX	#4	.20 [5]	1.37 [35]	2.27 [58]	.75 [19]	.38 [10]	GRAY	8	MY29-11 (1)	Y2MR (4)	W4CVT (2)	W4CRT (2)	U4CRT (2)	U4CRT (2)	U4CRT (2)	---	#4 - #6 AWG (1)	1-15/32
#2 STR. (125/24-150/24)	#2	60	YEV2CP26X75FX	#2	.26 [7]	1.65 [42]	2.60 [66]	.75 [19]	.46 [12]	BROWN	10	MY29-11 (1)	Y2MR (4)	W2CVT (2)	W2CRT (2)	U2CRT (2)	U2CRT (2)	U2CRT (2)	---	#2 - #6 AWG (1)	1-3/4
#1 STR. (175/24-225/24)	#1	75	YEV1CP29X75FX	#1	.29 [8]	1.66 [42]	2.63 [67]	.75 [19]	.51 [13]	GREEN	11	MY29-11 (1)	---	W1CVT (2)	W1CRT (2)	U1CRT (2)	U1CRT (2)	U1CRT (2)	---	#1 - #6 AWG (1)	1-3/4
1/0 STR. (275/24)	1/0	100	YEV25P33X75FX	1/0	.33 [8]	1.80 [46]	2.80 [71]	.75 [19]	.56 [14]	PINK	12	MY29-11 (1)	---	W25VT (4)	W25RT (4)	U25RT (2)	U25RT (2)	U25RT (2)	---	1/0 - #6 AWG (1)	1-7/8
2/0 STR. (325/24)	2/0	125	YEV26P37X75FX	2/0	.37 [9]	1.82 [46]	2.86 [73]	.75 [19]	.63 [16]	BLACK	13	MY29-11 (1)	---	W26VT (4)	W26RT (4)	U26RT (2)	U26RT (2)	U26RT (2)	---	2/0 - #4 AWG (1)	1-7/8
3/0 STR. (450/24)	3/0	150	YEV27P41X82FX	3/0	.41 [10]	1.97 [50]	3.11 [79]	.82 [21]	.70 [18]	ORANGE	14	MY29-11 (1)	---	W27VT (4)	W27RT (4)	U27RT (2)	U27RT (2)	U27RT (2)	---	3/0 - #2 AWG (1)	2-1/16
4/0 STR. (550/24)	4/0	200	YEV28P46X92FX	4/0	.46 [12]	1.99 [51]	3.28 [83]	.92 [23]	.77 [20]	PURPLE	15	MY29-11 (1)	---	W28VT (4)	W28RT (4)	U28RT (2)	U28RT (2)	U28RT (2)	---	4/0 - #1 AWG (1)	2-1/16

FLEX CABLE ONLY			CATALOG NUMBER	PIN SIZE EQUIVALENT	DIMENSIONS					COLOR CODE	DIE INDEX	MECH TOOLS (# CRIMPS)				HYDRAULIC TOOLS (# CRIMPS)				CABLE STRIP LENGTH	
FLEX CABLE	CODE AWG	NAVY			A DIA [MM]	B±.025 [MM]	L [MM]	P [MM]	OD±.01 [MM]			MY	Y2MR	MD7-34R	MD6/MD7	Y35/Y39 Y750	Y45	Y46	Y60BHU		Y644M (ACCOMMODATES EXPANDED WIRE RANGE)
250 kcmil FLEX CLASS G 259 CLASS H 427	---	---	YE30P50X100FX	250 kcmil	.50 [13]	2.37 [60]	3.75 [95]	1.00 [25]	.81 [21]	YELLOW	16	MY29-11 (1)	---	W29VT (4)	W29RT (4)	U29RT (2)	U29RT (2)	U29RT (2)	L29RT (1)	250 kcmil - 1/0 AWG (1)	2-3/8
262.6 kcmil (650/24) 250 FLEX CLASS I,K,M	---	---	YE31P51X102FX	262.6 kcmil	.51 [13]	2.39 [61]	3.82 [97]	1.02 [26]	.88 [22]	WHITE	17	---	---	W30VT (8)	W30RT (8)	U30RT (4)	U30RT (4)	U30RT (4)	L30RT (1)	250 kcmil - 1/0 AWG (1)	2-1/2
313.1 kcmil (775/24) (300 kcmil NOM)	---	---	YE32P55X110FX	300 kcmil	.55 [14]	2.53 [65]	4.08 [104]	1.10 [28]	.95 [24]	RED	18	---	---	W31VT (8)	W31RT (8)	U31RT (4)	U31RT (4)	U31RT (4)	L31RT (1)	300 kcmil - 2/0 AWG (1)	2-5/8
373.7 kcmil (925/24) (350 kcmil NOM)	---	---	YE34P59X118FX	350 kcmil	.59 [15]	2.68 [68]	4.36 [111]	1.18 [30]	1.06 [27]	BLUE	19	---	---	W32VT (8)	W32RT (8)	U32RT (4)	U32RT (4)	U32RT (4)	L32RT (1)	350 kcmil - 3/0 AWG (1)	2-3/4
444.4 kcmil (1100/24) (450 kcmil NOM)	---	---	YE36P67X134FX	450 kcmil	.67 [17]	3.14 [80]	5.04 [128]	1.34 [34]	1.19 [30]	BROWN	20	---	---	W34VT (8)	W34RT (8)	U34RT (4)	U34RT (4)	U34RT (4)	L34RT (2)	450 kcmil - 4/0 AWG (1)	3-1/4
535.3 kcmil (1325/24) (500 kcmil NOM)	---	---	YE38P71X142FX	500 kcmil	.71 [18]	3.29 [84]	5.30 [135]	1.42 [36]	1.25 [32]	PINK	L99	---	---	---	---	U38XRT (4)	U38XRT (4)	U38XRT (4)	---	500 kcmil - 4/0 AWG (1)	3-3/8
646 kcmil (1600/24) (600 kcmil NOM)	---	---	YE40P78X156FX	600 kcmil	.78 [20]	3.31 [84]	5.51 [140]	1.56 [40]	1.35 [34]	BLACK	24	---	---	---	---	U39RT (4)	U39RT (4)	U39RT (4)	L39RT (2)	600 kcmil - 250 kcmil (1)	3-7/16
777.7 kcmil (1925/24) (750 kcmil NOM)	---	---	YE44P87X174FX	750 kcmil	.87 [22]	3.54 [90]	5.99 [152]	1.74 [44]	1.50 [38]	YELLOW	L115	---	---	---	---	U44XRT (4)	U44XRT (4)	U44XRT (4)	---	750 kcmil - 500 kcmil (1)	3-5/8

CODE CONDUCTOR ONLY AWG			CATALOG NUMBER	PIN SIZE EQUIVALENT	DIMENSIONS					COLOR CODE	DIE INDEX	MECH TOOLS (# CRIMPS)				HYDRAULIC TOOLS (# CRIMPS)				CABLE STRIP LENGTH	
FLEX CABLE	CODE AWG	NAVY			A DIA [MM]	B±.025 [MM]	L [MM]	P [MM]	OD±.01 [MM]			MY	Y2MR	MD7-34R	MD6/MD7	Y35/Y39 Y750	Y45	Y46	Y60BHU		Y644M (ACCOMMODATES EXPANDED WIRE RANGE)
250 kcmil	---	---	YE29P50X100	250 kcmil	.50 [13]	1.99 [51]	3.33 [84]	1.00 [25]	.75 [19]	YELLOW	16	MY29-11 (1)	---	W29VT (4)	W29RT (4)	U29RT (2)	U29RT (2)	U29RT (2)	---	250 kcmil - 1/0 AWG (1)	2-1/2
300 kcmil	---	---	YE30P55X110	300 kcmil	.55 [14]	2.37 [60]	3.85 [98]	1.10 [28]	.81 [21]	WHITE	17	---	---	W30VT (8)	W30RT (8)	U30RT (4)	U30RT (4)	U30RT (4)	L30RT (1)	300 kcmil - 2/0 AWG (1)	2-5/8
350 kcmil	---	---	YE31P59X118	350 kcmil	.59 [15]	2.39 [61]	3.98 [101]	1.18 [30]	.88 [22]	RED	18	---	---	W31VT (8)	W31RT (8)	U31RT (4)	U31RT (4)	U31RT (4)	L31RT (1)	350 kcmil - 3/0 AWG (1)	2-3/4
400 kcmil	---	---	YE32P63X126	400 kcmil	.63 [16]	2.53 [65]	4.24 [108]	1.26 [32]	.95 [24]	BLUE	19	---	---	W32VT (8)	W32RT (8)	U32RT (4)	U32RT (4)	U32RT (4)	L32RT (1)	400 kcmil - 4/0 AWG (1)	3-1/4
500 kcmil	---	---	YE34P71X142	500 kcmil	.71 [18]	2.68 [68]	4.60 [117]	1.42 [36]	1.06 [27]	BROWN	20	---	---	W34VT (8)	W34RT (8)	U34RT (4)	U34RT (4)	U34RT (4)	L34RT (2)	500 kcmil - 4/0 AWG (1)	3-3/8
500 kcmil	---	---	YE34P71X250	500 kcmil	.71 [18]	2.68 [68]	5.68 [144]	2.50 [64]	1.06 [27]	BROWN	20	---	---	W34VT (8)	W34RT (8)	U34RT (4)	U34RT (4)	U34RT (4)	L34RT (2)	500 kcmil - 4/0 AWG (1)	3-3/8
600 kcmil	---	---	YE36P78X156	600 kcmil	.78 [20]	3.14 [80]	5.25 [133]	1.56 [40]	1.19 [30]	GREEN	22	---	---	---	---	U36RT (4)	U36RT (4)	U36RT (4)	L36RT (2)	600 kcmil - 250 kcmil (1)	3-7/16
750 kcmil	---	---	YE39P87X174	750 kcmil	.87 [22]	3.37 [86]	5.73 [145]	1.74 [44]	1.30 [33]	BLACK	24	---	---	---	---	U39RT (4)	S39RT (4)	P39RT (4)	L39RT (2)	750 kcmil - 500 kcmil (1)	3-5/8

REV. 061995

SEE SHEET 1 FOR NOTES AND DETAILS.

COPPER ADAPTOR PLUGS	
CAT NO. YE-P-FX & YE-P	SCALE N/A
DRAWN: J MICHAUD 3/16/93	CHECKED: D FILLION 3/30/93
DESIGN APPVL: G DITROIA 4/13/93	MFG APPVL: N/A
Q.A. APPVL: A LLOYD 4/13/93	KT8 APPVL: L HERRON 4/6/93
CAD FILE: SE208340-02_2	PH REF: N/A
FRAMATONE CONNECTORS USA INC. BURNBY ELECTRICAL	MOL REF: N/A
HANOVER, NH 03108 U.S.A.	PROJECT: DO 52573
1-800-346-4175	DRAWING NO. SE208340
	REV 2
	SHEET 2 OF 4

ACCOMMODATES COPPER WIRE SIZES			CATALOG NUMBER	PIN SIZE EQUIVALENT	DIMENSIONS					COLOR CODE	DIE INDEX	MECH TOOLS (# CRIMPS)				HYDRAULIC TOOLS (# CRIMPS)				CABLE STRIP LENGTH	
FLEX CABLE	CODE AWG	NAVY			A DIA [MM]	B±.025 [MM]	L [MM]	P [MM]	OD±.01 [MM]			MY	Y2MR	MD7-34R	MD6/MD7	Y35/Y39 Y750	Y45	Y46	Y60BHU		Y644M (ACCOMMODATES EXPANDED WIRE RANGE)
#4 STR. (91/24-105/24)	#4	40	YEV4CP19X75FX	#5	.19 [5]	1.37 [35]	2.27 [58]	.75 [19]	.38 [10]	GRAY	8	MY29-11 (1)	Y2MR (4)	W4CVT (2)	W4CRT (2)	U4CRT (2)	U4CRT (2)	U4CRT (2)	---	#4 - #6 AWG (1)	1-15/32
#2 STR. (125/24-150/24)	#2	60	YEV2CP23X75FX	#3	.23 [6]	1.65 [42]	2.60 [66]	.75 [19]	.46 [12]	BROWN	10	MY29-11 (1)	Y2MR (4)	W2CVT (2)	W2CRT (2)	U2CRT (2)	U2CRT (2)	U2CRT (2)	---	#2 - #6 AWG (1)	1-3/4
#1 STR. (175/24-225/24)	#1	75	YEV1CP26X75FX	#2	.26 [7]	1.66 [42]	2.63 [67]	.75 [19]	.51 [13]	GREEN	11	MY29-11 (1)	---	W1CVT (2)	W1CRT (2)	U1CRT (2)	U1CRT (2)	U1CRT (2)	---	#1 - #6 AWG (1)	1-3/4
1/0 STR. (275/24)	1/0	100	YEV25P29X75FX	#1	.29 [8]	1.80 [46]	2.80 [71]	.75 [19]	.56 [14]	PINK	12	MY29-11 (1)	---	W25VT (4)	W25RT (4)	U25RT (2)	U25RT (2)	U25RT (2)	---	1/0 - #6 AWG (1)	1-7/8
2/0 STR. (325/24)	2/0	125	YEV26P33X75FX	1/0	.33 [8]	1.82 [46]	2.86 [73]	.75 [19]	.63 [16]	BLACK	13	MY29-11 (1)	---	W26VT (4)	W26RT (4)	U26RT (2)	U26RT (2)	U26RT (2)	---	2/0 - #4 AWG (1)	1-7/8
3/0 STR. (450/24)	3/0	150	YEV27P37X75FX	2/0	.37 [9]	1.97 [50]	3.04 [77]	.75 [19]	.70 [18]	ORANGE	14	MY29-11 (1)	---	W27VT (4)	W27RT (4)	U27RT (2)	U27RT (2)	U27RT (2)	---	3/0 - #2 AWG (1)	2-1/16
4/0 STR. (550/24)	4/0	200	YEV28P41X75FX	3/0	.41 [10]	1.99 [51]	3.11 [79]	.75 [19]	.77 [20]	PURPLE	15	MY29-11 (1)	---	W28VT (4)	W28RT (4)	U28RT (2)	U28RT (2)	U28RT (2)	---	4/0 - #1 AWG (1)	2-1/16
4/0 STR. (550/24)	4/0	200	YEV28P41X82FX	3/0	.41 [10]	1.99 [51]	3.18 [81]	.82 [21]	.77 [20]	PURPLE	15	MY29-11 (1)	---	W28VT (4)	W28RT (4)	U28RT (2)	U28RT (2)	U28RT (2)	---	4/0 - #1 AWG (1)	2-1/16

FLEX CABLE ONLY		CATALOG NUMBER	WIRE SIZE	DIMENSIONS					COLOR	DIE INDEX	MECH TOOLS	HYDRAULIC TOOLS	CABLE LENGTH						
CLASS	AWG			A DIA	B±.025	L	P	OD±.01											
250 kmil FLEX CLASS G 259 CLASS H 427	---	YE30P46X92FX	4/0	.46 [12]	2.37 [60]	3.67 [93]	.92 [23]	.81 [21]	YELLOW	16	MY29-11 (1)	W29VT (4)	W29RT (4)	U29RT (2)	U29RT (2)	U29RT (2)	L29RT (1)	250 kmil - 1/0 AWG (1)	2-3/8
262.6 kmil (650/24) 250 FLEX CLASS I, K, M	---	YE31P46X92FX	4/0	.46 [12]	2.39 [61]	3.72 [94]	.92 [23]	.88 [22]	WHITE	17	---	W30VT (8)	W30RT (8)	U30RT (4)	U30RT (4)	U30RT (4)	L30RT (1)	250 kmil - 1/0 AWG (1)	2-1/2
313.1 kmil (775/24) 300 kmil NOM	---	YE32P51X102FX	250 kmil	.51 [13]	2.53 [65]	4.00 [102]	1.02 [26]	.95 [24]	RED	18	---	W31VT (8)	W31RT (8)	U31RT (4)	U31RT (4)	U31RT (4)	L31RT (1)	300 kmil - 2/0 AWG (1)	2-5/8
373.7 kmil (925/24) 350 kmil NOM	---	YE34P55X110FX	300 kmil	.55 [14]	2.68 [68]	4.28 [109]	1.10 [28]	1.06 [27]	BLUE	19	---	W32VT (8)	W32RT (8)	U32RT (4)	U32RT (4)	U32RT (4)	L32RT (1)	350 kmil - 3/0 AWG (1)	2-3/4
444.4 kmil (1100/24) 450 kmil NOM	---	YE36P59X118FX	350 kmil	.59 [15]	3.14 [80]	4.88 [124]	1.18 [30]	1.19 [30]	BROWN	20	---	W34VT (8)	W34RT (8)	U34RT (4)	U34RT (4)	U34RT (4)	L34RT (2)	450 kmil - 4/0 AWG (1)	3-1/4
535.3 kmil (1325/24) 500 kmil NOM	---	YE38P67X134FX	450 kmil	.67 [17]	3.29 [84]	5.22 [133]	1.34 [34]	1.25 [32]	PINK	L99	---	---	---	U38XRT (4)	U38XRT (4)	U38XRT (4)	---	500 kmil - 4/0 AWG (1)	3-3/8
646 kmil (1600/24) 600 kmil NOM	---	YE40P71X142FX	500 kmil	.71 [18]	3.31 [84]	5.37 [136]	1.42 [36]	1.35 [34]	BLACK	24	---	---	---	U39RT (4)	U39RT (4)	U39RT (4)	L39RT (2)	600 kmil - 250 kmil (1)	3-7/16
777.7 kmil (1925/24) 750 kmil NOM	---	YE44P78X156FX	600 kmil	.78 [20]	3.54 [90]	5.81 [148]	1.56 [40]	1.50 [38]	YELLOW	L115	---	---	---	U44XRT (4)	U44XRT (4)	U44XRT (4)	---	750 kmil - 500 kmil (1)	3-5/8

CODE CONDUCTOR ONLY AWG		CATALOG NUMBER	WIRE SIZE	DIMENSIONS					COLOR	DIE INDEX	MECH TOOLS	HYDRAULIC TOOLS	CABLE LENGTH						
AWG	NAVY			A DIA	B±.025	L	P	OD±.01											
250 kmil	---	YE29P46X92	4/0	.46 [12]	1.99 [51]	3.25 [82]	.92 [23]	.75 [19]	YELLOW	16	MY29-11 (1)	W29VT (4)	W29RT (4)	U29RT (2)	U29RT (2)	U29RT (2)	---	250 kmil - 1/0 AWG (1)	2-1/2
300 kmil	---	YE30P50X100	250 kmil	.50 [13]	2.37 [60]	3.75 [95]	1.00 [25]	.81 [21]	WHITE	17	---	W30VT (8)	W30RT (8)	U30RT (4)	U30RT (4)	U30RT (4)	L30RT (1)	300 kmil - 2/0 AWG (1)	2-5/8
350 kmil	---	YE31P55X110	300 kmil	.55 [14]	2.39 [61]	3.90 [99]	1.10 [28]	.88 [22]	RED	18	---	W31VT (8)	W31RT (8)	U31RT (4)	U31RT (4)	U31RT (4)	L31RT (1)	350 kmil - 3/0 AWG (1)	2-3/4
400 kmil	---	YE32P59X118	350 kmil	.59 [15]	2.53 [65]	4.16 [106]	1.18 [30]	.95 [24]	BLUE	19	---	W32VT (8)	W32RT (8)	U32RT (4)	U32RT (4)	U32RT (4)	L32RT (1)	400 kmil - 4/0 AWG (1)	3-1/4
500 kmil	---	YE34P63X126	400 kmil	.63 [16]	2.68 [68]	4.44 [113]	1.26 [32]	1.06 [27]	BROWN	20	---	W34VT (8)	W34RT (8)	U34RT (4)	U34RT (4)	U34RT (4)	L34RT (2)	500 kmil - 4/0 AWG (1)	3-3/8
600 kmil	---	YE36P71X142	500 kmil	.71 [18]	3.14 [80]	5.11 [130]	1.42 [36]	1.19 [30]	GREEN	22	---	---	---	U36RT (4)	U36RT (4)	U36RT (4)	L36RT (2)	600 kmil - 250 kmil (1)	3-7/16
750 kmil	---	YE39P78X156	600 kmil	.78 [20]	3.37 [86]	5.55 [141]	1.56 [40]	1.30 [33]	BLACK	24	---	---	---	U39RT (4)	U39RT (4)	U39RT (4)	L39RT (2)	750 kmil - 500 kmil (1)	3-5/8

REV. 061995

SEE SHEET 1 FOR NOTES AND DETAILS

COPPER ADAPTOR PLUGS

CAT NO: **YE-P-FX & YE-P** SCALE: **N/A**

DRAWN: J MICHAUD 3/16/93 CHECKED: D FILLION 3/30/93

DESIGN APPL: G DITROIA 4/13/93 P/B APPL: N/A

E.A. APPL: A LLOYD 4/18/93 P/B APPL: L HERRON 4/6/93

CAD FILE: SE208340-03_4 PW REF: N/A

FRAMATOME CONNECTORS USA INC. VOL REF: N/A

BURNDY ELECTRICAL PROJECT: DO 52573

MANCHESTER, NH 03108 U.S.A. **SE208340**

1-800-346-4175 SHEET 3 of 4 **4**

ACCOMMODATES COPPER WIRE SIZES		CATALOG NUMBER	PIN SIZE EQUIVALENT	DIMENSIONS					COLOR CODE	DIE INDEX	MECH TOOLS (# CRIMPS)				HYDRAULIC TOOLS (# CRIMPS)				CABLE STRIP LENGTH		
FLEX CABLE	CODE AWG			NAVY	A DIA [MM]	B±.025 [MM]	L [MM]	P [MM]			OD±.01 [MM]	MY	Y2MR	MD7-34R	MD6/MD7	Y35/Y39 Y750	Y45 <3	Y46 <4		Y60BHU	Y644M (ACCOMMODATES EXPANDED WIRE RANGE)
#4 STR. (91/24-105/24)	#4	40	YEV4CP16X75FX	#6	.16 [4]	1.37 [35]	2.27 [58]	.75 [19]	.38 [10]	GRAY	8	MY29-11 (1)	Y2MR (4)	W4CVT (2)	W4CRT (2)	U4CRT (2)	U4CRT (2)	U4CRT (2)	---	#4 - #6 AWG (1)	1-15/32
#2 STR. (125/24-150/24)	#2	60	YEV2CP20X75FX	#4	.20 [5]	1.65 [42]	2.60 [66]	.75 [19]	.46 [12]	BROWN	10	MY29-11 (1)	Y2MR (4)	W2CVT (2)	W2CRT (2)	U2CRT (2)	U2CRT (2)	U2CRT (2)	---	#2 - #6 AWG (1)	1-3/4
#1 STR. (175/24-225/24)	#1	75	YEV1CP23X75FX	#3	.23 [6]	1.66 [42]	2.63 [67]	.75 [19]	.51 [13]	GREEN	11	MY29-11 (1)	---	W1CVT (2)	W1CRT (2)	U1CRT (2)	U1CRT (2)	U1CRT (2)	---	#1 - #6 AWG (1)	1-3/4
1/0 STR. (275/24)	1/0	100	YEV25P26X75FX	#2	.26 [7]	1.80 [46]	2.80 [71]	.75 [19]	.56 [14]	PINK	12	MY29-11 (1)	---	W25VT (4)	W25RT (4)	U25RT (2)	U25RT (2)	U25RT (2)	---	1/0 - #6 AWG (1)	1-7/8
2/0 STR. (325/24)	2/0	125	YEV26P29X75FX	#1	.29 [8]	1.82 [46]	2.86 [73]	.75 [19]	.63 [16]	BLACK	13	MY29-11 (1)	---	W26VT (4)	W26RT (4)	U26RT (2)	U26RT (2)	U26RT (2)	---	2/0 - #4 AWG (1)	1-7/8
3/0 STR. (450/24)	3/0	150	YEV27P33X75FX	1/0	.33 [8]	1.97 [50]	3.04 [77]	.75 [19]	.70 [18]	ORANGE	14	MY29-11 (1)	---	W27VT (4)	W27RT (4)	U27RT (2)	U27RT (2)	U27RT (2)	---	3/0 - #2 AWG (1)	2-1/16
4/0 STR. (550/24)	4/0	200	YEV28P37X75FX	2/0	.37 [9]	1.99 [51]	3.11 [81]	.75 [19]	.77 [20]	PURPLE	15	MY29-11 (1)	---	W28VT (4)	W28RT (4)	U28RT (2)	U28RT (2)	U28RT (2)	---	4/0 - #1 AWG (1)	2-1/16
4/0 STR. (550/24)	4/0	200	YEV28P37X400FX	2/0	.37 [9]	1.99 [51]	6.36 [162]	4.00 [102]	.77 [20]	PURPLE	15	MY29-11 (1)	---	W28VT (4)	W28RT (4)	U28RT (2)	U28RT (2)	U28RT (2)	---	4/0 - #1 AWG (1)	2-1/16

FLEX CABLE ONLY																				
250 kcmil FLEX CLASS G 259 CLASS H 427	---	YE30P41X82FX	3/0	.41 [10]	2.37 [60]	3.57 [91]	.82 [21]	.81 [21]	YELLOW	16	MY29-11 (1)	---	W29VT (4)	W29RT (4)	U29RT (2)	U29RT (2)	U29RT (2)	L29RT (1)	250 kcmil - 1/0 AWG (1)	2-3/8
262.6 kcmil (650/24) 250 FLEX CLASS L,K,M	---	YE31P41X82FX	3/0	.41 [10]	2.39 [61]	3.62 [92]	.82 [21]	.88 [22]	WHITE	17	---	---	W30VT (8)	W30RT (8)	U30RT (4)	U30RT (4)	U30RT (4)	L30RT (1)	250 kcmil - 1/0 AWG (1)	2-1/2
313.1 kcmil (775/24) 300 kcmil NOM	---	YE32P46X92FX	4/0	.46 [12]	2.53 [65]	3.90 [99]	.92 [23]	.95 [24]	RED	18	---	---	W31VT (8)	W31RT (8)	U31RT (4)	U31RT (4)	U31RT (4)	L31RT (1)	300 kcmil - 2/0 AWG (1)	2-5/8
373.7 kcmil (925/24) 350 kcmil NOM	---	YE34P51X102FX	250 kcmil	.51 [13]	2.68 [68]	4.20 [107]	1.02 [26]	1.06 [27]	BLUE	19	---	---	W32VT (8)	W32RT (8)	U32RT (4)	U32RT (4)	U32RT (4)	L32RT (1)	350 kcmil - 3/0 AWG (1)	2-3/4
444.4 kcmil (1100/24) 450 kcmil NOM	---	YE36P55X110FX	300 kcmil	.55 [14]	3.14 [80]	4.80 [122]	1.10 [28]	1.19 [30]	BROWN	20	---	---	W34VT (8)	W34RT (8)	U34RT (4)	U34RT (4)	U34RT (4)	L34RT (2)	450 kcmil - 4/0 AWG (1)	3-1/4
535.3 kcmil (1325/24) 500 kcmil NOM	---	YE38P59X118FX	350 kcmil	.59 [15]	3.29 [84]	5.06 [129]	1.18 [30]	1.25 [32]	PINK	L99	---	---	---	---	U38XRT (4)	U38XRT (4)	U38XRT (4)	---	500 kcmil - 4/0 AWG (1)	3-3/8
646 kcmil (1600/24) 600 kcmil NOM	---	YE40P67X134FX	450 kcmil	.67 [17]	3.31 [84]	5.29 [134]	1.34 [34]	1.35 [34]	BLACK	24	---	---	---	---	U39RT (4)	U39RT (4)	U39RT (4)	L39RT (2)	600 kcmil - 250 kcmil (1)	3-7/16
777.7 kcmil (1925/24) 750 kcmil NOM	---	YE44P71X142FX	500 kcmil	.71 [18]	3.54 [90]	5.67 [144]	1.42 [36]	1.50 [38]	YELLOW	L115	---	---	---	---	U44XRT (4)	U44XRT (4)	U44XRT (4)	---	750 kcmil - 500 kcmil (1)	3-5/8

CODE CONDUCTOR ONLY AWG																				
250 kcmil	---	YE29P41X82	3/0	.41 [10]	1.99 [51]	3.15 [80]	.82 [21]	.75 [19]	YELLOW	16	MY29-11 (1)	---	W29VT (4)	W29RT (4)	U29RT (2)	U29RT (2)	U29RT (2)	---	250 kcmil - 1/0 AWG (1)	2-1/2
300 kcmil	---	YE30P46X92	4/0	.46 [12]	2.37 [60]	3.67 [93]	.92 [23]	.81 [21]	WHITE	17	---	---	W30VT (8)	W30RT (8)	U30RT (4)	U30RT (4)	U30RT (4)	L30RT (1)	300 kcmil - 2/0 AWG (1)	2-5/8
350 kcmil	---	YE31P50X100	250 kcmil	.51 [13]	2.39 [61]	3.80 [96]	1.00 [25]	.88 [22]	RED	18	---	---	W31VT (8)	W31RT (8)	U31RT (4)	U31RT (4)	U31RT (4)	L31RT (1)	350 kcmil - 3/0 AWG (1)	2-3/4
400 kcmil	---	YE32P55X110	300 kcmil	.55 [14]	2.53 [65]	4.08 [104]	1.10 [28]	.95 [24]	BLUE	19	---	---	W32VT (8)	W32RT (8)	U32RT (4)	U32RT (4)	U32RT (4)	L32RT (1)	400 kcmil - 4/0 AWG (1)	3-1/4
500 kcmil	---	YE34P59X118	350 kcmil	.59 [15]	2.68 [68]	4.36 [111]	1.18 [30]	1.06 [27]	BROWN	20	---	---	W34VT (8)	W34RT (8)	U34RT (4)	U34RT (4)	U34RT (4)	L34RT (2)	500 kcmil - 4/0 AWG (1)	3-3/8
600 kcmil	---	YE36P63X126	400 kcmil	.63 [16]	3.14 [80]	4.95 [126]	1.26 [32]	1.19 [30]	GREEN	22	---	---	---	---	U36RT (4)	U36RT (4)	U36RT (4)	L36RT (2)	600 kcmil - 250 kcmil (1)	3-7/16
750 kcmil	---	YE39P71X142	500 kcmil	.71 [18]	3.37 [86]	5.41 [137]	1.42 [36]	1.30 [33]	BLACK	24	---	---	---	---	U39RT (4)	S39RT (4)	P39RT (4)	L39RT (2)	750 kcmil - 500 kcmil (1)	3-5/8

COPPER ADAPTOR PLUGS

CAT NO:	YE-P-FX & YE-P	SCALE	N/A
DRAWN:	J MICHAUD	3/16/93	CHECKED: D FILLION 3/30/93
DESIGN APPR'L:	G DITTOIA	4/13/93	APPV'L: N/A
CHECK APPR'L:	L LLOYD	4/18/93	APPV'L: L HERRON 4/6/93
3-D FILE:	SE208340-SHT 04	PH. REF:	N/A
FRANITONE CONNECTORS USA INC.			
BURNBY ELECTRICAL			
MANCHESTER, NH 03108		DRAWING NO.	
U. S. A.		REV	
1-800-346-4175		SE208340	
		3	

SEE SHEET 1 FOR NOTES AND DETAILS.

REV. 06/1995