

Plug-In Attenuator/Switch

50Ω Bi-Phase 5 to 450 MHz

GAS-1+



CASE STYLE: A05

Maximum Ratings

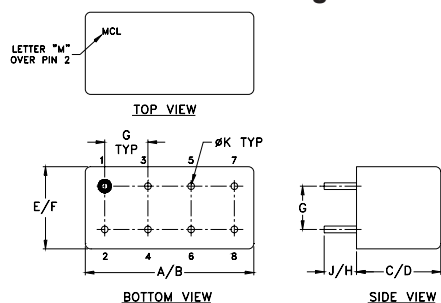
Operating Temperature	-55°C to 100°C
Storage Temperature	-55°C to 100°C
Control Current	30mA
Permanent damage may occur if any of these limits are exceeded.	

Pin Connections

INPUT	1
OUTPUT	8
CONTROL	3,4^
GROUND	2,5,6,7
CASE GROUND	2

^ pins must be connected together externally

Outline Drawing



Outline Dimensions (inch/mm)

A	B	C	D	E	F	
.770	.800	.240	.250	.370	.400	
19.56	20.32	6.10	6.35	9.40	10.16	
G	H	J	K			wt
.200	.20	.14	.031			grams
5.08	5.08	3.56	0.79			3.7

Features

- wideband, 5 to 450 MHz
- rugged case, low profile
- excellent amplitude and phase unbalance

Applications

- bi-phase modulator
- electronic attenuator

+RoHS Compliant

The +Suffix identifies RoHS Compliance. See our web site for RoHS Compliance methodologies and qualifications

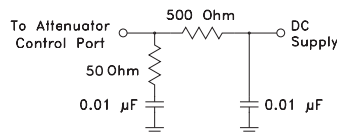
Attenuator/Switch Electrical Specifications

FREQUENCY (MHz)	INSERTION LOSS (dB) ±20 mA	MAX. INPUT PWR (dBm) ±20 mA	IN-OUT ISOLATION (dB) 0 mA			BI-PHASE X̄ (±20 mA) Typ.	
			L	M	U	ΔAMP (dB)	Phase (deg.) deviation from 180°
IN	Mid-Band	1 dB	Typ.	Typ.	Typ.	Total	Total
CON	Total Range	no damage	Min.	Min.	Min.	Range	Range
f _L -f _U	Typ. Max.	compr.	Typ. Min.	Typ. Min.	Typ. Min.	m	m
5-450	DC-0.05	20 25	60 48	45 35	35 25	0.10 0.1	1.0 1.5

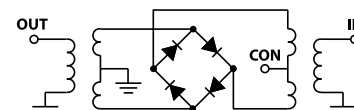
L = low range [f_L to 10 f_L] M = mid range [10 f_L to f_U/2] U = upper range [f_U/2 to f_U] m = [2 f_L to f_U/2]

Performance specifications apply for input power up to 10 dB below stated 1 dB compression.

suggested control port biasing configuration

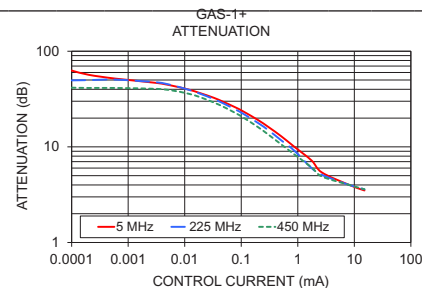
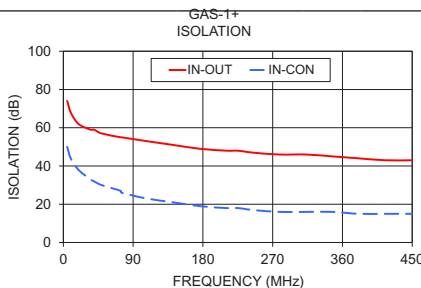
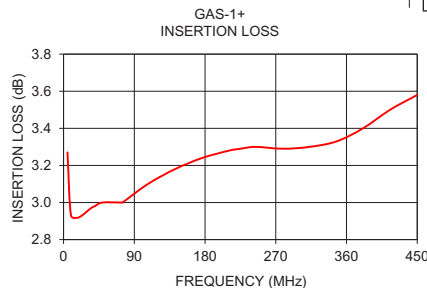


electrical schematic



Typical Performance Data

Freq. (MHz)	I. Loss (dB) at 20mA	±Control, 20mA		Isolation (dB)		Input R. Loss (dB)	Control Current (mA)	Attenuation (dB)			Phase Δ ref at 15mA Ctrl			Input VSWR			
		ΔAMP (dB)	ΔPhase (deg.)	(in-out)	(in-con)			5 MHz	225 MHz	450 MHz	5 MHz	225 MHz	450 MHz	5 MHz	225 MHz	450 MHz	
	̄	σ	̄	̄	̄	̄						deg.	deg.	deg.			
5.0	3.27	0.025	0.02	179.9	74	50	11.8	0.0000	68.1	50.0	41.3	-52.4	124.7	108.2	2.9	2.9	2.6
9.5	2.93	0.019	0.02	179.9	68	44	13.4	0.0001	62.8	49.6	41.6	-9.9	119.7	103.2	2.9	2.9	2.6
19.5	2.92	0.017	0.02	179.9	62	38	14.3	0.0002	56.7	49.9	41.3	-18.0	114.6	102.4	2.9	2.9	2.6
35.0	2.97	0.017	0.02	179.9	59	33	14.5	0.0006	51.7	50.5	41.3	-20.7	101.4	95.5	2.9	2.9	2.6
39.5	2.98	0.017	0.03	179.9	59	32	14.5	0.0032	46.6	47.3	40.4	-10.7	58.4	76.3	2.9	2.9	2.6
49.5	3.00	0.017	0.03	179.9	57	30	14.4	0.0058	43.8	44.3	39.0	-6.4	45.6	60.3	2.9	2.9	2.6
74.0	3.00	0.019	0.04	179.8	55	27	14.1	0.0116	39.8	39.6	36.0	-0.4	29.9	43.3	2.8	2.9	2.6
75.1	3.00	0.018	0.03	179.8	55	26	14.1	0.0184	36.6	36.1	33.2	3.3	24.8	33.3	2.8	2.8	2.5
107.4	3.10	0.019	0.04	179.7	53	23	14.3	0.0327	32.6	31.6	29.1	5.9	18.3	23.7	2.8	2.7	2.4
141.8	3.18	0.019	0.04	179.7	51	21	14.6	0.0486	29.5	28.4	26.2	6.9	15.6	19.4	2.7	2.7	2.4
176.3	3.24	0.021	0.04	179.6	49	19	14.5	0.0787	25.9	24.6	22.6	7.6	13.3	14.8	2.6	2.5	2.2
210.8	3.28	0.021	0.04	179.5	48	18	14.6	0.1081	23.5	22.2	20.3	7.9	12.2	12.8	2.5	2.4	2.1
225.3	3.29	0.023	0.04	179.5	48	18	14.7	0.1975	19.1	17.8	16.1	7.8	10.0	9.7	2.2	2.2	1.9
244.2	3.30	0.024	0.04	179.4	47	17	14.8	0.3085	16.0	14.8	13.3	7.4	8.7	7.9	2.0	1.9	1.7
278.7	3.29	0.024	0.04	179.3	46	16	15.1	0.5100	12.9	11.7	10.6	6.5	7.3	6.0	1.7	1.7	1.4
313.2	3.30	0.026	0.05	179.2	46	16	15.1	0.8548	10.1	9.2	8.4	5.3	5.5	4.4	1.5	1.4	1.2
347.7	3.33	0.029	0.05	179.1	45	16	14.8	1.7555	7.2	6.0	6.1	3.3	3.4	2.5	1.3	1.2	1.1
381.0	3.40	0.034	0.05	179.1	44	15	15.0	2.6670	5.4	5.1	4.9	2.0	2.0	1.3	1.3	1.2	1.2
415.5	3.50	0.041	0.06	179.0	43	15	14.7	8.1232	4.0	4.0	4.0	0.5	0.5	0.4	1.5	1.4	1.4
450.0	3.58	0.044	0.06	178.9	43	15	13.7	15.1218	3.5	3.6	3.6	0.0	-0.1	0.0	1.6	1.5	1.4



Notes

- Performance and quality attributes and conditions not expressly stated in this specification document are intended to be excluded and do not form a part of this specification document.
- Electrical specifications and performance data contained in this specification document are based on Mini-Circuits' applicable established test performance criteria and measurement instructions.
- The parts covered by this specification document are subject to Mini-Circuits standard limited warranty and terms and conditions (collectively, "Standard Terms"); Purchasers of this part are entitled to the rights and benefits contained therein. For a full statement of the Standard Terms and the exclusive rights and remedies thereunder, please visit Mini-Circuits' website at www.minicircuits.com/MCLStore/terms.jsp

