

DRG. No.  
**N. 602 ETC.**

FIRST ANGLE PROJECTION

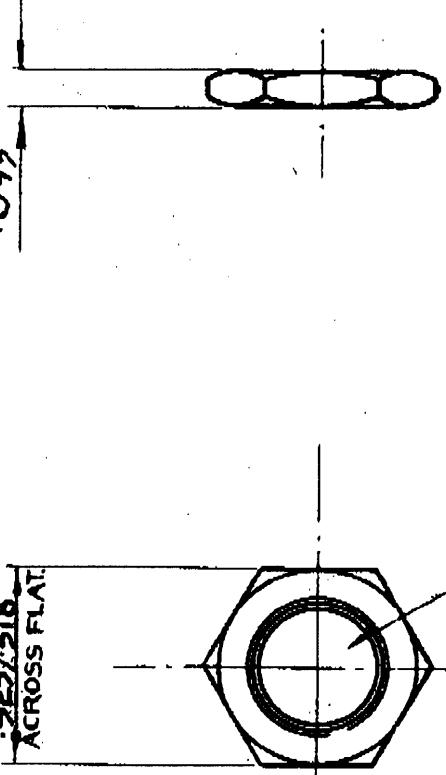
N. 768ADP

12

17-5

$.225 \pm .018$   
ACROSS FLAT

$.093$ "



THREAD TO B.S. 84 (MED)  
.775" DIA. SEE TABLE  
FOR T.P.I. SLIGHTLY C/SK.  
HOLE.

SUGGESTED TIGHTENING  
TORQUE 35 lb in.

ISS.	C.N.N.	ALTERATIONS	SIG & DATE
4	—	RE-DRAWN NO CHANGE	SEA 12-6-58
5	2056	SPEC. ADDED TO THREAD	3-6-59
6	—	RE-DRAWN NO CHANGE	FED 3-2-61
7	—	MIN. SIZE - .0005	REVISION
8	7803	5/8" DIA WAS 5/16"	10-20-61
9	8470	FINISH TO CHANGE WAS	11-20-61
10	8659	N. 56. SPOCS WAS SPOCS	6-1-62
11	8683	PLATE (N. 602 & N. 603)	4-11-60

PART NO	THREAD	MATERIAL	FINISH
N. 602	32 T.P.I.	BRASS	NICKEL PLATE
N. 602 A.	26 T.P.I.	BRASS	NICKEL PLATE
N. 602 D	32 T.P.I.	DURALUMIN	CLEAN
N. 602 AD	26 T.P.I.	DURALUMIN	CLEAN
N. 656	32 T.P.I.	DURALUMIN	ANODIZE TO COLVERN SPEC SPOCS
N. 676	26 T.P.I.	BRASS	NICKEL PLATE TO SF. 003
N. 685	32 T.P.I.	MILD STEEL	NICKEL PLATE TO SF. 020
N. 695	32 T.P.I.	DURALUMIN	ANODIZE TO COLVERN SPEC SPOCS
N. 697	32 T.P.I.	BRASS	ELECTRO-TIN D.T.D. 924
N. 697 A	26 T.P.I.	BRASS	ELECTRO-TIN D.T.D. 924
N. 722	32 T.P.I.	BRASS	CARBON PLATE TO COLVERN MI. C. SPOCS
N. 768	32 T.P.I.	BRASS	CLEAN TO SF. 011

RE-DRAWN	CHECKED	APPROVED	DATE
F. E. D.	J.S.		3-2-61
MATERIAL: SEE TABLE		FINISH: SEE TABLE	
TITLE 375 LOCK NUT			DRG. No.
USED ON		N. 602 ETC.	
		COLVERN LTD., MAWNEYS RD., ROMFORD	

TOLERANCES  
DECIMALS: ± .001"  
FRACTIONS: ± 1/64"  
UNLESS OTHERWISE STATED

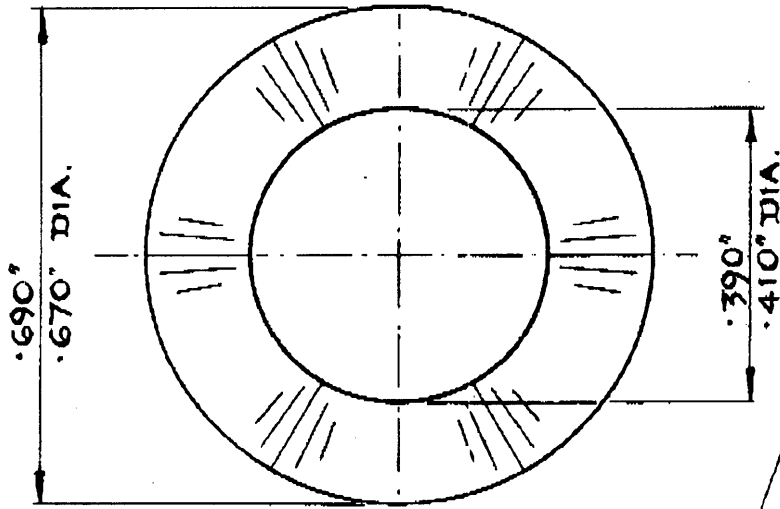
SCALE  
2:1

DIMENSIONS IN INCHES

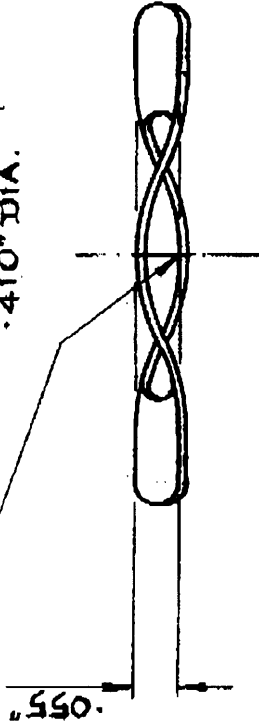
N. 602-141418

PART No.  
**W.1015**

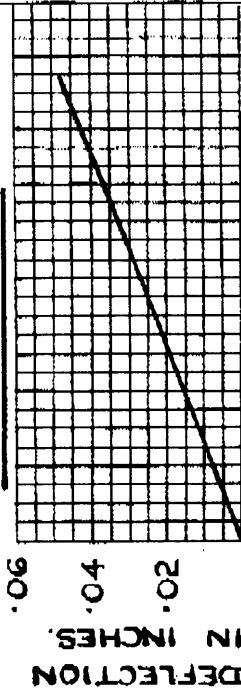
FIRST ANGLE PROJECTION



3-CORRUGATIONS  
EQUALLY SPACED.  
CURVATURE OF  
CRESTS & TROUGHS  
TO BE EQUAL.



SPRING DATA.



LOAD IN POUNDS ± 10%

ALTERATIONS		SIG. & DATE
ISS.	C.N. No.	ALTERATION
4	8171	ALTERNATIVE MATS BELIEVED
5	8869	BRONZE WAS PD
		16-1-78
		16-3-82

DRAWN	CHECKED	APPROVED	DATE
F. E. D.			16-1-78
MATERIAL: .0108" THK (32-SWG) PHOS. BRONZE			FINISH: NICKEL PLATE.
TITLE: 3/8" WAVY WASHER W.1015			PART No.
USED ON		COLVERN LTD., ROMFORD, ESSEX.	

JOINT SERVICE CAT.

NE 5310-Z-119097

DIMENSIONS IN INCHES

SCALE

4:1

TOLERANCES

DECIMALS: ± .005"  
FRACTIONS: ± 1/64"

UNLESS OTHERWISE STATED

GAF 458074

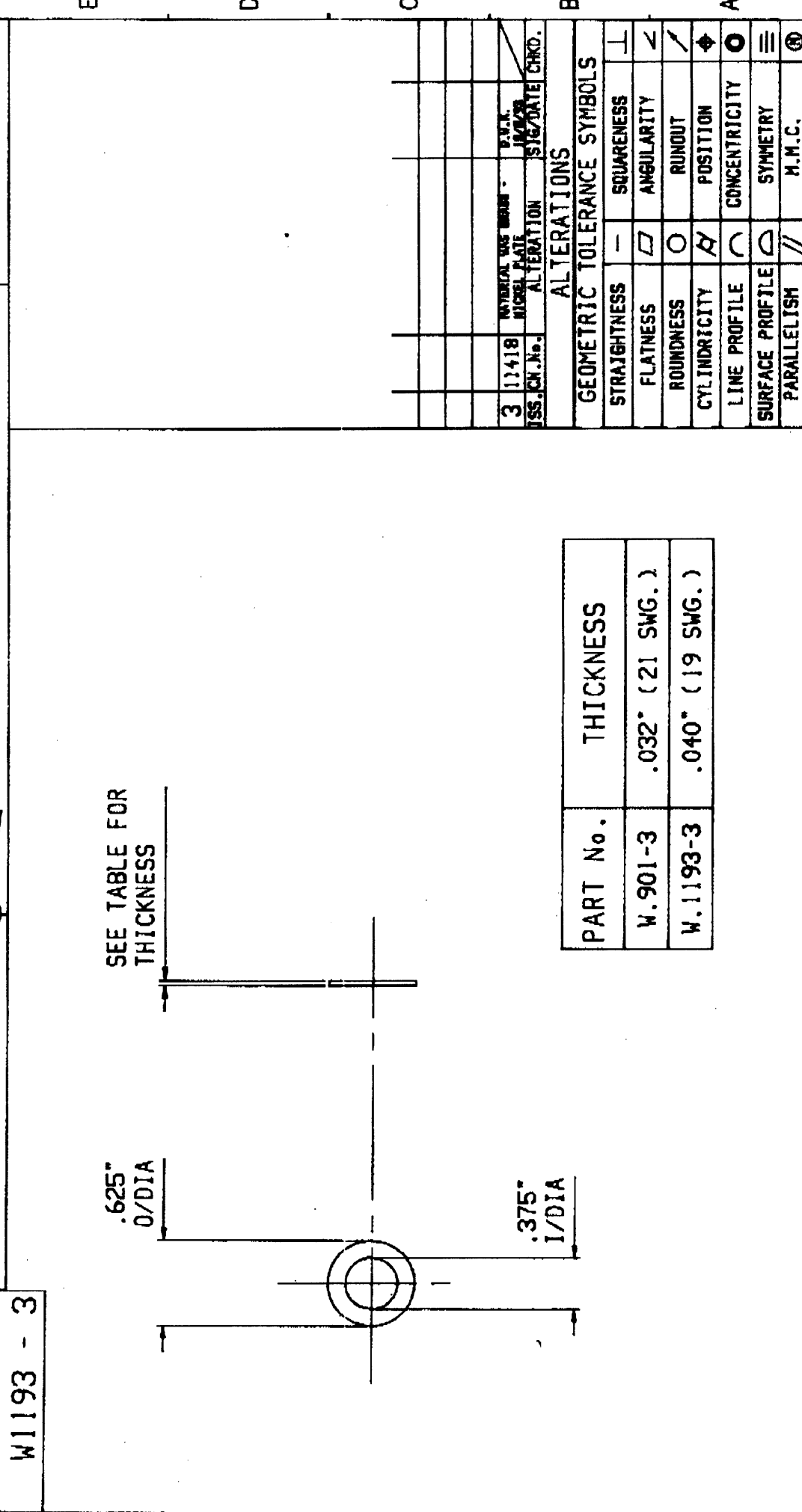
SCRAP P8 F PD 769

16-1-78

16-3-82

DRG. NO. W901 - 3  
 W1193 - 3

THIRD ANGLE PROJECTION IF IN DOUBT ASKI



SEE TABLE FOR THICKNESS

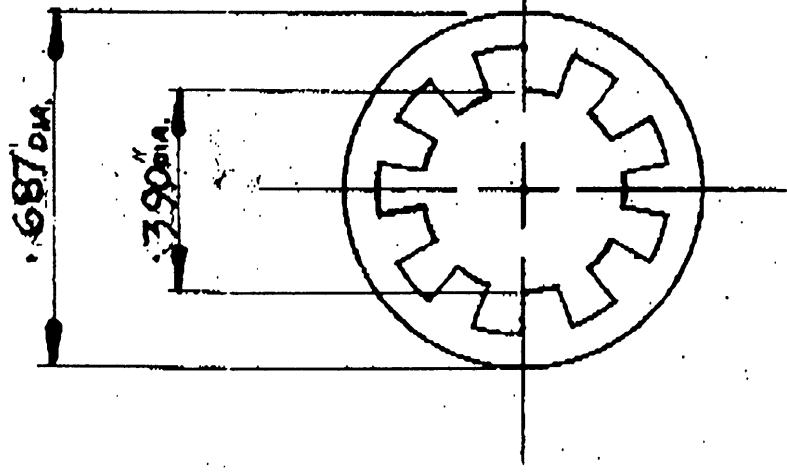
PART No.	THICKNESS
W.901-3	.032" (21 SWG.)
W.1193-3	.040" (19 SWG.)

GAUGING DIMENSIONS IDENTIFIED BY THIS SYMBOL		DIMENSIONS IN INCHES		GROSS MATERIAL		DRAWN DATE CHECKED	
© 1993 COLVERN LTD. THIS DRAWING IS THE PROPERTY OF COLVERN LTD. WITHOUT WHOSE WRITTEN PERMISSION IT MUST NOT BE COPIED, REPRODUCED, REISSUED OR DISCLOSED TO A THIRD PARTY. C.A.D. DRAWING. ANY ALTERATIONS MUST BE CARRIED OUT ON THE C.A.D. SYSTEM ONLY		TOLERANCES DECIMALS +/- .005" FRACTIONS +/- 1/64" ANGLES +/- 1° UNLESS OTHERWISE STATED		B.O. SCALE PT760 OPERATION TOOL No. TITLE A4 3/8" WASHER		WILD STEEL BRIGHT ZINC PLATE & CLEAR PASSIVATE ROMFORD ESSEX W901 - 3 W1193 - 3	

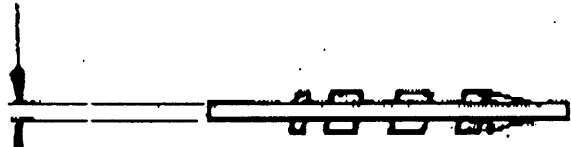
ALTERATIONS	
3	11418
ISS. ICR. No.	MATERIAL USE
	MICHEL PLATE
	ALTERATION
	SIG/DATE
	CHKD.

GEOMETRIC TOLERANCE SYMBOLS	
STRAIGHTNESS	— SQUARENESS
FLATNESS	□ ANGULARITY
ROUNDNESS	○ RUNOUT
CYLINDRICITY	⌀ POSITION
LINE PROFILE	∩ CONCENTRICITY
SURFACE PROFILE	∆ SYMMETRY
PARALLELISM	// H.M.C.

PART No.  
**W 902**



.035



.063" over  
Teeth  
per check  
on 10 samples

ALTERATIONS

ISS.	C.N.No.	ALTERATION	ISS. & DATE
2	269	REBRASSIN UP TO DATE	10/2/54
3	279	FINISH WAS RING DATE PASSENGER	12/1/71

DRAWN	CHECKED	APPROVED	DATE
P. J. Wapling	Sheeh	Sheeh	28:1:52
MATERIAL:- STEEL		FINISH:- NICKEL PLATE	
375 DIA. SKINPROOF WASHER		PART No. W 902	
USED ON		COLLYVEN LTD. MAWNEYS RD., ROMFORD	

PURCHASED FROM BARBER & COLMAN  
TYPE 1P - No 1220

GENERAL TOLERANCE = 10%  
UNLESS OTHERWISE STATED

SCALE  
2:1