

# Monolithic crystal filter

## MQF172.5-1200/01



### Application

- 2 pol filter
- i.f.- filter
- use in mobile and stationary transceivers

### Limiting values

		Unit	Value
Center frequency	$f_0$	MHz	172.5
Insertion loss		dB	$\leq 3.0$
Pass band at 1.0 dB		kHz	$\pm 6.00$
Ripple in pass band	$f_0 \pm 6.00$ kHz	dB	$\leq 1.0$
Stop band attenuation	$f_0 \pm 50$ kHz	dB	$\geq 20$
Alternate attenuation		dB	$> 30$ except spurious

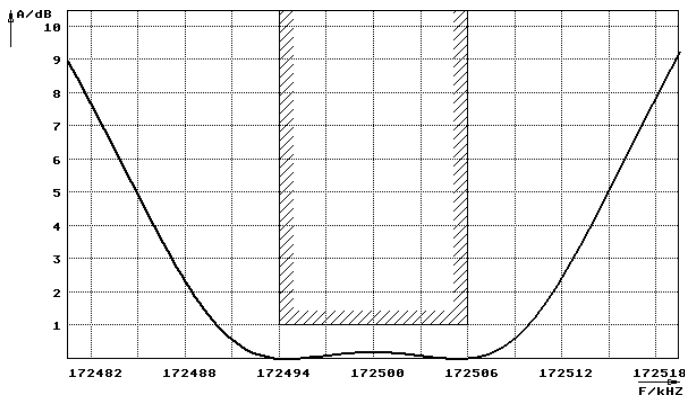
### Terminating impedance Z

R1    C1	Ohm/pF	700    -0.70
R2    C2	Ohm/pF	700    -0.70

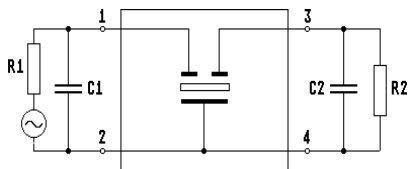
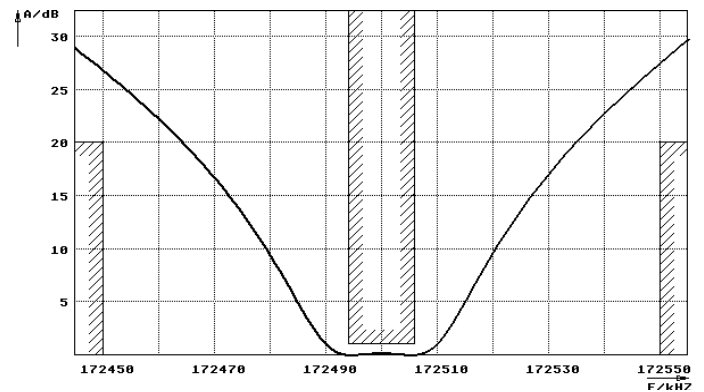
Operating temp. range	° C	-20... +70
-----------------------	-----	------------

### Characteristics MQF172.5-1200/01

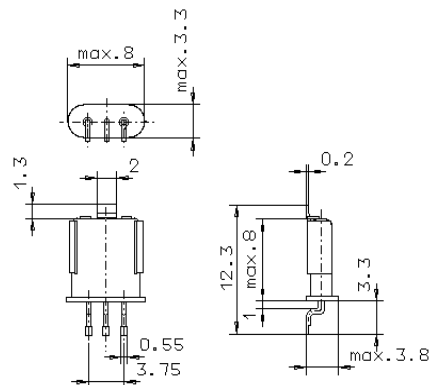
#### Pass band



#### Stop band



Pin connections: 1 Input  
2 Input-E  
3 Output  
4 Output-E



GH9/S