

**PLEASE CHECK WWW.MOLEX.COM FOR LATEST PART INFORMATION**

**Part Number:** [0008550101](#)  
**Status:** **Active**  
**Overview:** [kk](#)  
**Description:** KK® Crimp Terminal, 22-30 AWG, Selective Gold (Au), Nickel (Ni) Under Plating

**Documents:**

[Drawing \(PDF\)](#) [RoHS Certificate of Compliance \(PDF\)](#)  
[Product Specification PS-10-07 \(PDF\)](#)

**General**

Product Family Crimp Terminals  
 Series [2759](#)  
 Crimp Quality Equipment Yes  
 Overview [kk](#)  
 Product Name KK®

**Physical**

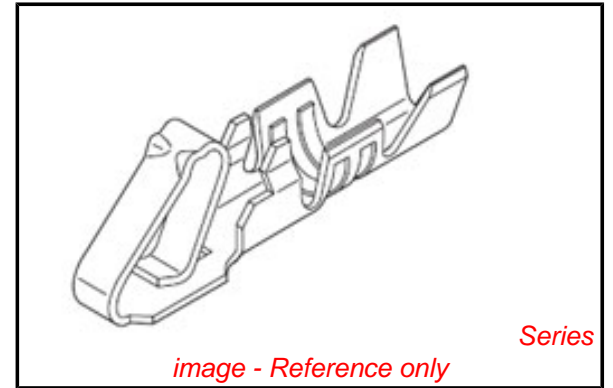
Gender Female  
 Material - Metal Brass  
 Material - Plating Mating Gold  
 Material - Plating Termination Nickel  
 Packaging Type Reel  
 Plating min: Mating (µin) 15  
 Plating min: Mating (µm) 0.375  
 Plating min: Termination (µin) 30  
 Plating min: Termination (µm) 0.75  
 Termination Interface: Style Crimp or Compression  
 Wire Insulation Diameter 1.57mm (.062") max.  
 Wire Size AWG 22, 24, 26, 28, 30  
 Wire Size mm² N/A

**Material Info**

Old Part Number 2759-(555)B

**Reference - Drawing Numbers**

Product Specification PS-10-07  
 Sales Drawing SD-2759



**EU RoHS**

**ELV and RoHS  
 Compliant**  
**REACH SVHC  
 Contains SVHC: No**  
**Halogen-Free  
 Status**

**China RoHS**



**Need more information on product  
 environmental compliance?**

Email [productcompliance@molex.com](mailto:productcompliance@molex.com)  
 For a multiple part number RoHS Certificate of  
 Compliance, [click here](#)

Please visit the [Contact Us](#) section for any  
 non-product compliance questions.

**Search Parts in this Series**

[2759Series](#)

**Use With**

2695 , 5051 , 6745 , 41895

**Application Tooling | FAQ**

*Tooling specifications and manuals are  
 found by selecting the products below.  
 Crimp Height Specifications are then  
 contained in the Application Tooling  
 Specification document.*

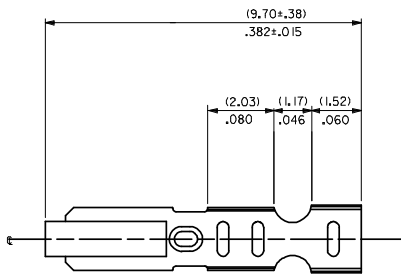
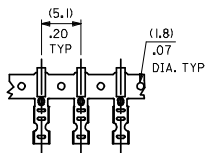
**Global**

Description	Product #
Extraction Tool	<a href="#">0011030022</a>
Terminator Die	<a href="#">0011402265</a>
Insertion Tool	<a href="#">0638120000</a>
Mini-Mac™	<a href="#">0638882000</a>
Applicator, Use with Large Wire Insulation Diameter	
Mini-Mac™	<a href="#">0638882100</a>
Applicator, Use with	

This document was generated on 06/01/2010

**PLEASE CHECK [WWW.MOLEX.COM](http://WWW.MOLEX.COM) FOR LATEST PART INFORMATION**

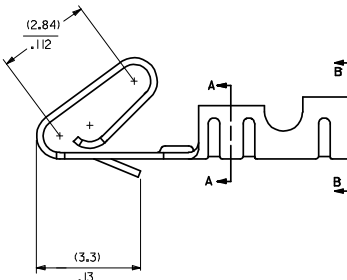
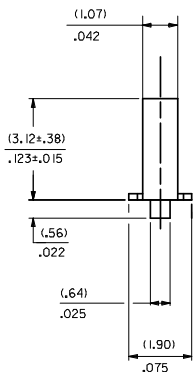
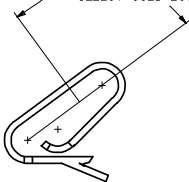
CARRIER VIEW



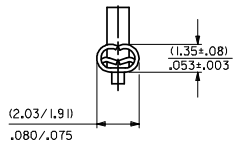
NOTES

1. MATERIAL  
(0.203±0.010)/.0080±.0004 THICK BRASS
2. FINISH  
102 - OVERALL TIN: (0.00508)/.000200 MIN. TIN OVER (0.00254)/.000100 MIN. COPPER  
122 - OVERALL TIN: (0.00381)/.000150 MIN. TIN OVER (0.00076)/.000030 MIN. NICKEL  
#P909 - OVERALL HOT TIN DIP: (0.00254)/.000100 MIN.  
550 - SELECT GOLD (0.00038)/.000015 MIN. OVERALL GOLD FLASH: (0.00005)/.000002 MIN. OVERALL NICKEL UNDERPLATE: (0.00076)/.000030 MIN.  
555- SELECT GOLD (0.00038)/.000015 MIN. OVERALL NICKEL UNDERPLATE: (0.00076)/.000030  
558 - SELECT GOLD: (0.00076)/.000030 MIN. OVERALL GOLD FLASH: (0.00005)/.000002 MIN. OVERALL NICKEL UNDERPLATE: (0.00127)/.000050 MIN.  
\*THE PRIMARY SHIPPING CARTON WILL BE LABELED "COMPLIANT TO RoHS DIRECTIVE 2002/95/EC AND ELV ANNEX II OF DIRECTIVE 2000/53/EC." CARTONS WITHOUT THIS LABEL MAY CONTAIN PRODUCT WITH TIN-LEAD PLATING.
3. PRODUCT SPEC: PS-10-07
4. PACKAGING SPECIFICATION: NONE
5. CRIMP IS FOR 22-30 GA WIRE WITH (1.57)/.100 DIA INSULATION MAX.
6. INSERTION FORCE OF TERMINAL INTO (2.54)/.100 CENTERLINE CONNECTOR IS 2.5 LBS. MAX
7. TERMINALS WILL RETAIN 8 LBS PULL FOR 1 MIN. IN A (2.54)/.100 CENTERLINE HOUSING.
8. DIMENSIONS GIVEN ACROSS CENTERLINES ARE SYMMETRICAL ABOUT THOSE CENTERLINES WITHIN HALF THE TOTAL TOLERANCE.
9. CODE LETTER PRECEDING PART NO. DESIGNATES MANUFACTURING LOCATION.  
I=IRELAND
10. THIS PART CONFORMS TO CLASS B REQUIREMENTS OF COSMETIC SPECIFICATION PS-45499-002.

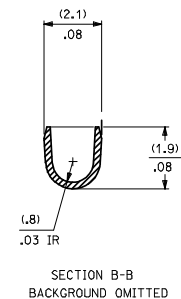
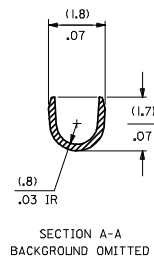
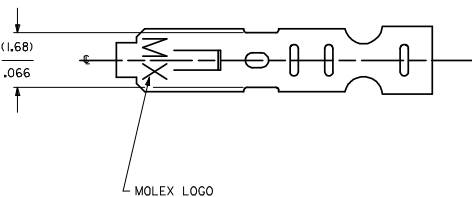
SELECT GOLD LOCATION



CRIMP DETAIL



CRIMPED TERMINAL 2759-IP90)LC IS USED WITHOUT WIRE AND IS INSERTED INTO HOUSING TO PROVIDE TENSION WHEN ASSEMBLED TO HEADERS DURING SHIPMENT.



- 2759-(\*\*\*))
- FORM
  - L=LOOSE
  - C=LOOSE CRIMPED
  - A=CHAIN PER ES-339-A
  - B=CHAIN PER ES-339-B
- PLATING  
SEE NOTE 2

SH	REV
1	AS3
2	AS4

UPDATE DIMS  
DEC NO: UCP/2008-2190  
2008/03/17  
DRM/NADERR  
2008/03/18  
CHKD: SCHMIDT  
2008/03/18  
APPR: SMITH  
2008/03/24

QUALITY SYMBOLS	DESCRIPTION
∇=0	
▽=0	

GENERAL TOLERANCES (UNLESS SPECIFIED)	
mm	INCH
4 PLACES ± .010	± .0004
3 PLACES ± .010	± .0004
2 PLACES ± 0.25	± .010
1 PLACE ± 0.36	± .014
ANGULAR ± 1/2°	

DIMENSION STYLE	
MM/IN	SCALE
DRAWN BY: SAMIEC	DATE: 07/28/87
CHECKED BY: PATEL	DATE: 07/28/87
APPROVED BY: LENZ	DATE: 07/28/87

TITLE		SCALE		DESIGN UNITS		THIRD ANGLE PROJECTION	
CRIMP TERMINAL		---		INCH		☐	
22-30 GA WIRE							
MATERIAL NO. SD-2759		DOCUMENT NO.		SHEET NO.		1 OF 2	

DRAFT WHERE APPLICABLE MUST REMAIN WITHIN DIMENSIONS

SEE CHART

MOLEX INCORPORATED

2759-***)*													
PART NO.	ENG. NO.	PART NO.	ENG. NO.	PART NO.	ENG. NO.	PART NO.	ENG. NO.	PART NO.	ENG. NO.	PART NO.	ENG. NO.	PART NO.	ENG. NO.
08-55-0101	2759-(555)B												
08-55-0102	2759-(555)L												
08-55-0126	2759-(555)A												
08-56-0109	2759-(550)B												
08-56-0110	2759-(550)L												
08-50-0113	2759-(P909)B												
08-50-0114	2759-(P909)L												
08-50-0124	2759-(P909)C												
08-51-0108	2759-(122)B												
	2759-(122)L												
I 08-50-0274	2759-(P909)B												
I 08-50-0275	2759-(P909)L												
I 08-50-0273	2759-(P909)A												
08-55-0130	2759-(558)B												
08-55-0131	2759-(558)L												
08-50-0160	2759-(102)L												
08-50-0159	2759-(102)												

<b>REMOVE *999 PARTS</b> EC NO: UCP2008-0722 DRAWN BY: 2007/08/02 CHKD: JRELL 2007/08/02 APPROVED: JRELL 2007/08/03 AS4 REV DESCRIPTION	QUALITY SYMBOLS	GENERAL TOLERANCES (UNLESS SPECIFIED)	DIMENSION STYLE	SCALE	DESIGN UNITS	THIRD ANGLE PROJECTION												
	$\nabla=0$ $\nabla=0$	<table border="1"> <tr><th>mm</th><th>INCH</th></tr> <tr><td>4 PLACES ± --- ± ---</td><td></td></tr> <tr><td>3 PLACES ± --- ± ---</td><td></td></tr> <tr><td>2 PLACES ± --- ± ---</td><td></td></tr> <tr><td>1 PLACE ± --- ± ---</td><td></td></tr> <tr><td colspan="2">ANGULAR ±1/2°</td></tr> </table>	mm	INCH	4 PLACES ± --- ± ---		3 PLACES ± --- ± ---		2 PLACES ± --- ± ---		1 PLACE ± --- ± ---		ANGULAR ±1/2°		MM/IN	---	INCH	
	mm	INCH																
	4 PLACES ± --- ± ---																	
3 PLACES ± --- ± ---																		
2 PLACES ± --- ± ---																		
1 PLACE ± --- ± ---																		
ANGULAR ±1/2°																		
			DRAWN BY: SAMIEC DATE: 07/28/87 CHECKED BY: PATEL DATE: 07/28/87 APPROVED BY: LENZ DATE: 07/28/87			TITLE: CRIMP TERMINAL 22-30 GA WIRE												
		DRAFT WHERE APPLICABLE MUST REMAIN WITHIN DIMENSIONS	SIZE D	SEE CHART	MATERIAL NO. SD-2759 DOCUMENT NO. SD-2759 SHEET NO. 2 OF 2	MOLEX INCORPORATED THIS DRAWING CONTAINS INFORMATION THAT IS PROPRIETARY TO MOLEX INCORPORATED AND SHOULD NOT BE USED WITHOUT WRITTEN PERMISSION												