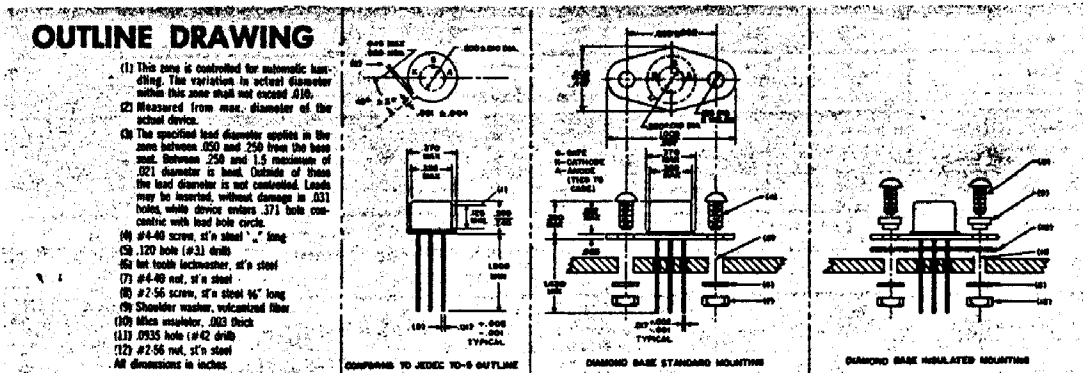
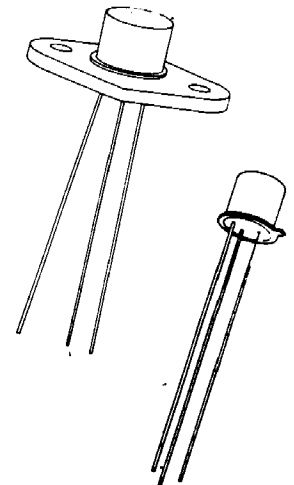


# SCR

## C6, C611

For High Volume Light Industrial, Computer, and Consumer Applications

- Low Cost
- All-diffused for Proved Reliability
- Popular Voltage Range—up to 200V
- Sensitive Gate (1 ma to Trigger)
- Standard TO-5 Package (C6) for Convenient Mounting
- Diamond Flange Option (C611) Simplifies Heat Dissipation



| Types      | Peak Forward Blocking Voltage, $V_{FWM}$<br>$T_J = -40^\circ\text{C to } +125^\circ\text{C}$<br>$R_{GK} = 1000 \text{ OHMS}$ | Working and Repetitive Peak Reverse Voltage $V_{ROM(wkg)}$ and $V_{ROM(rep)}$<br>$T_J = -40^\circ\text{C to } +125^\circ\text{C}$ | Non-Repetitive Peak Reverse Voltage, $V_{ROM(non-rep)}$ (<5 Millisec.)<br>$T_J = -40^\circ\text{C to } +125^\circ\text{C}$ |
|------------|--|---|--|
| C6U, C611U | 25 Volts   | 25 Volts  | 40 Volts   |
| C6F, C611F | 50 Volts   | 50 Volts  | 75 Volts   |
| C6A, C611A | 100 Volts  | 100 Volts   | 150 Volts  |
| C6G, C611G | 150 Volts  | 150 Volts   | 225 Volts  |
| C6B, C611B | 200 Volts  | 200 Volts   | 300 Volts  |

### MAXIMUM ALLOWABLE RATINGS

|   |  |
|---|--|
| Peak Forward Voltage, PFV   | 300 Volts                                  |
| RMS Forward Current, On-state (independent of conduction angle)   | 1.6 Amperes                                |
| Average Forward Current, On-state   | Depends on conduction angle (See Charts)   |
| Peak One Cycle Surge Forward (Non-repetitive) Current, $I_{FM}$ (surge)   | 10 Amperes                                 |
| Peak Gate Power, $P_{GM}$   | 0.1 Watt                                   |
| Average Gate Power, $P_{G(AV)}$   | 0.01 Watt                                  |
| Peak Gate Current, $I_{GFM}$  | 0.1 Ampere                                 |
| Peak Gate Voltage, Forward & Reverse, $V_{GFM}$ & $V_{GRM}$   | 6 Volts                                    |
| Storage Temperature, $T_{stg}$  | $-40^\circ\text{C to } +150^\circ\text{C}$ |
| Operating Temperature   | $-40^\circ\text{C to } +125^\circ\text{C}$ |
| Peak non-recurrent surge forward current during turn-on time interval<br>(Current rise time = 5.0 $\mu\text{sec}$ Minimum). | 40 Amperes                                 |