
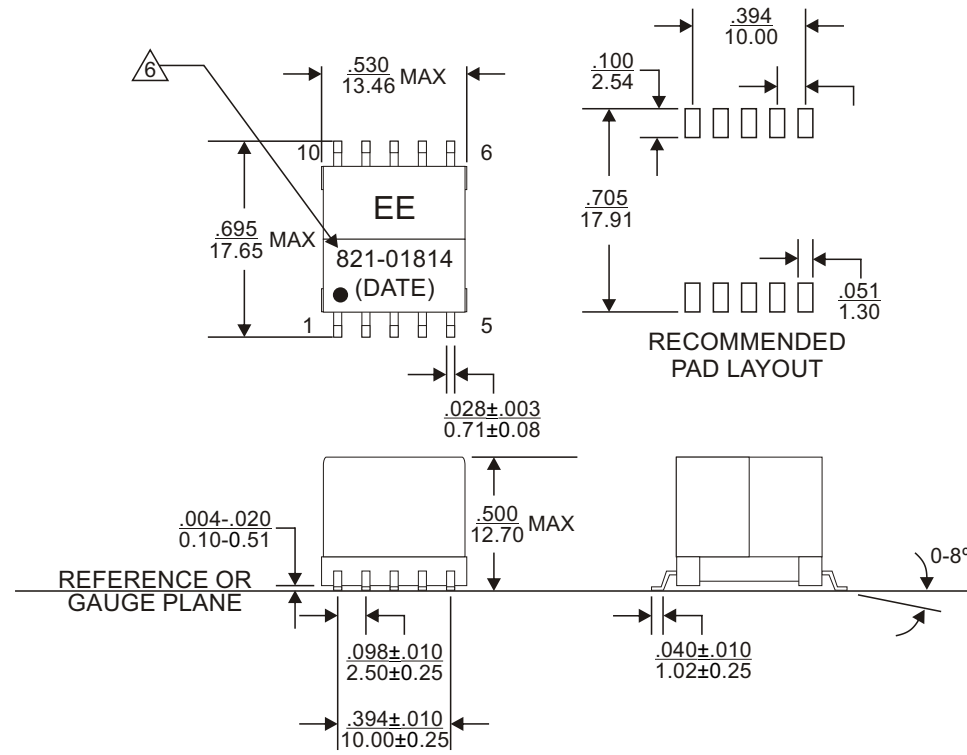



REVISIONS			
REV.	DESCRIPTION	ECN NO.	DATE
01	FIRST RELEASE FOR RFQ#D2005-6048	N/A	08/24/05
02	REVISE THE DESIGN AS PER CUSTOMER REQUEST	EE7426	10/12/05
03	ADD RoHS COMPLIANT VERSION	EE10395	05/28/08

PART NUMBER		PART DESCRIPTION		PAGE 4 IS FOR INTERNAL ONLY										
821-01814		Standard version, with Lead(Pb)		TITLE										
821-01814F		RoHS compliant per EU Directive 2002/95/EC(without exemption of solder content)		TRANSFORMER, ISDN U-INTERFACE, SMT, 10 PIN										
<p align="center"><u>WARNING !</u></p> <p>ALL SHEETS OF THIS DOCUMENT ARE CONTROLLED DOCUMENTATION AND ARE NOT TO BE RELEASED OUTSIDE OF E&E OR ITS SUB-CONTRACTORS WITHOUT AUTHORIZATION.</p>	<p>UNLESS OTHERWISE SPECIFIED, DIMENSIONS ARE IN INCH/mm.</p> <p align="center">TOLERANCE ARE:</p> <table border="0"> <tr> <td>INCH</td> <td>mm</td> <td>ANGLE</td> </tr> <tr> <td>.XXX ± .005</td> <td>.XX ± .13</td> <td>X.X ± 0.3</td> </tr> <tr> <td>.XX ± .02</td> <td>.X ± .5</td> <td>X. ± 1</td> </tr> </table>	INCH	mm	ANGLE	.XXX ± .005	.XX ± .13	X.X ± 0.3	.XX ± .02	.X ± .5	X. ± 1	APPROVALS	DATE	 E & E Magnetic Products Ltd.	
		INCH	mm	ANGLE										
		.XXX ± .005	.XX ± .13	X.X ± 0.3										
		.XX ± .02	.X ± .5	X. ± 1										
		DRAWN BY												
D. LAM	05/28/08	DRAWING NO./MODEL		REV										
PROJ. ENG														
W.P. CHENG	05/28/08	821-01814		03										
APPROVED BY														
V. TSUI	05/28/08	SCALE		PAGE	OF									
Q.A.														
C.M. TSUI	05/28/08	DO NOT SCALE		1	4									



1. Dimensions are specified in $\frac{\text{inches}}{\text{mm}}$ with higher precedence in inches.
2. Unless otherwise specified, all tolerances are $\pm \frac{.010}{0.25}$.
3. Coplanarity: $\frac{.004}{0.10}$ max.
4. "(DATE)" includes at least the manufacturing date code (in YYWW format) plus two character country code.
5. Dimensions are to be measured in accordance with JEDEC standard 95-1.

 For RoHS compliant version, 821-01814F, the part will be marked with "821-01814F", instead of "821-01814".

MECHANICAL OUTLINE



E & E Magnetic Products Ltd.

DRAWING NO./MODEL

821-01814

REV

03

SCALE

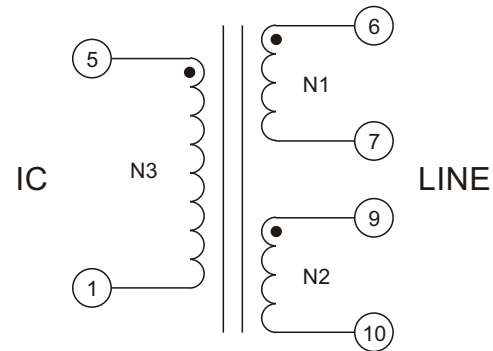
DO NOT SCALE

PAGE

2

OF

4



SCHEMATIC

ELECTRICAL SPECIFICATION @25°C:

PARAMETERS	UNIT	LIMITS
Turns Ratio(6-7):(9-10):(5-1)	-	1 : 1 : 1 ± 2%
Polarity	-	Per Schematic
Ls(6-10), short 7-9@10kHz, 0.10Vrms	mH	14.47 ± 8%
Ls(6-10), short 7-9, 5-1@100kHz, 0.10Vrms	uH	160 typ
Cww(5-1):(6-7-9-10)@100kHz, 0.1Vrms	pF	35 typ
DCR(6-10),short 7-9	Ω	7.8 typ
DCR(5-1)	Ω	3.8 typ
Hipot(5-1):(6-7-9-10)	Vrms	2000 min

7. Operating temperature range: -40°C to +85°C.
8. The transformer is designed to meet basic insulation of UL60950 with working voltage of up to 250Vrms.



E & E Magnetic Products Ltd.

DRAWING NO./MODEL

821-01814

REV

03

SCALE

DO NOT SCALE

PAGE

3

OF

4