

# Monolithic crystal filter

## MQF18.304-3000/01



### Application

- 2 pol filter
- i.f.- filter
- use in mobile and stationary transceivers

### Limiting values

		Unit	Value
Center frequency	$f_0$	MHz	18.304
Insertion loss		dB	$\leq 1.0$
Pass band at 3.0 dB		kHz	$\pm 15.00$
Ripple in pass band	$f_0 \pm 9.00$ kHz	dB	$\leq 0.5$
Stop band attenuation	$f_0 \pm 45$ kHz	dB	$\geq 15$
	$f_0 \pm 75$ kHz	dB	$> 20$ except spurious
Alternate attenuation	$f_0 + 350 \dots 1000$ kHz	dB	$> 35$ except spurious
	$f_0 - 300 \dots 1000$ kHz	dB	$> 45$

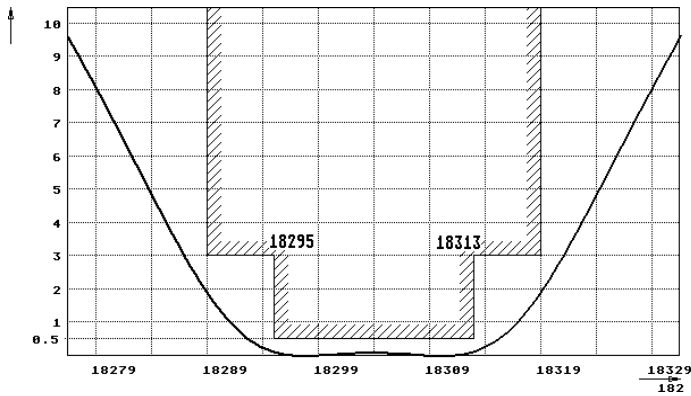
### Terminating impedance Z

R1    C1	Ohm/pF	2700    0
R2    C2	Ohm/pF	2700    0

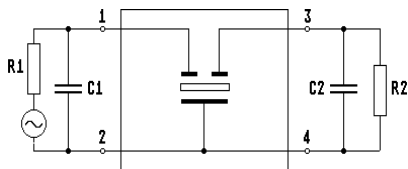
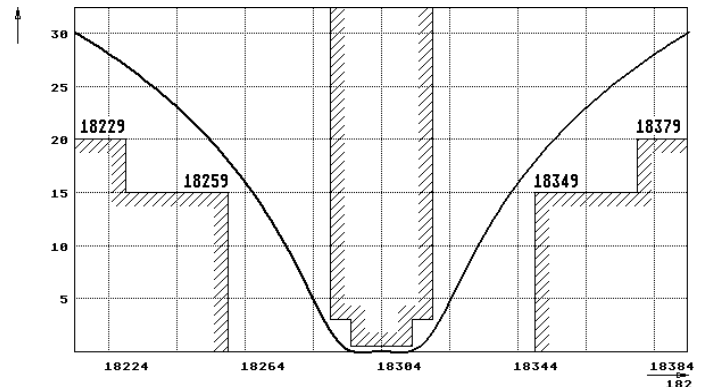
Operating temp. range	°C	-25... +70
-----------------------	----	------------

### Characteristics MQF18.304-3000/01

#### Pass band



#### Stop band



Pin connections: 1 Input  
2 Input-E  
3 Output  
4 Output-E

