

PLEASE CHECK WWW.MOLEX.COM FOR LATEST PART INFORMATION

Part Number: [0700211021](#)
Status: **Active**
Overview: [cgrid_sl_products](#)
Description: SL™ Crimp Terminal, Series 70021, Male, Nickel over Tin, 22-24 AWG, Reel

Documents:

[Drawing \(PDF\)](#) [RoHS Certificate of Compliance \(PDF\)](#)

General

Product Family	Crimp Terminals
Series	70021
Crimp Quality Equipment	Yes
Overview	cgrid_sl_products
Product Name	SL™

Physical

Gender	Male
Material - Metal	Phosphor Bronze
Material - Plating Mating	Tin
Material - Plating Termination	Tin
Packaging Type	Reel
Plating min: Mating (µin)	150
Plating min: Mating (µm)	3.75
Plating min: Termination (µin)	75
Plating min: Termination (µm)	1.875
Termination Interface: Style	Crimp or Compression
Wire Insulation Diameter	1.63mm (.064") max.
Wire Size AWG	22, 24
Wire Size mm²	N/A

Material Info

Reference - Drawing Numbers

Sales Drawing [SD-70021-1021](#)

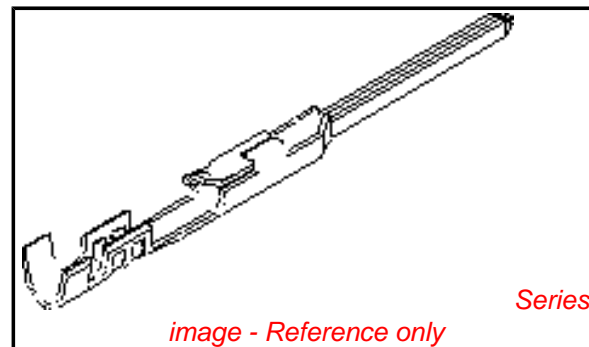


image - Reference only

EU RoHS

**ELV and RoHS
Compliant**

REACH SVHC

Contains SVHC: No

Halogen-Free

Status

Halogen-Free

**Need more information on product
environmental compliance?**

Email productcompliance@molex.com
 For a multiple part number RoHS Certificate of
 Compliance, [click here](#)

Please visit the [Contact Us](#) section for any
 non-product compliance questions.

China RoHS



Search Parts in this Series

[70021Series](#)

Use With

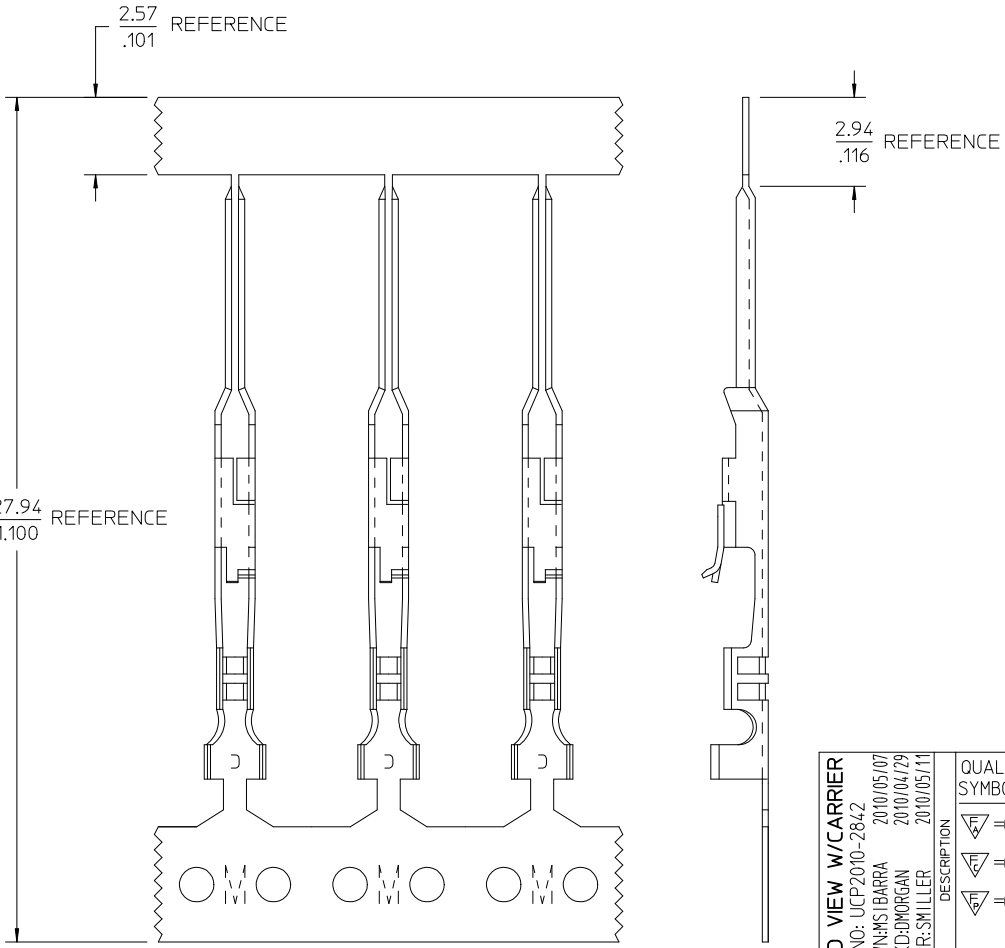
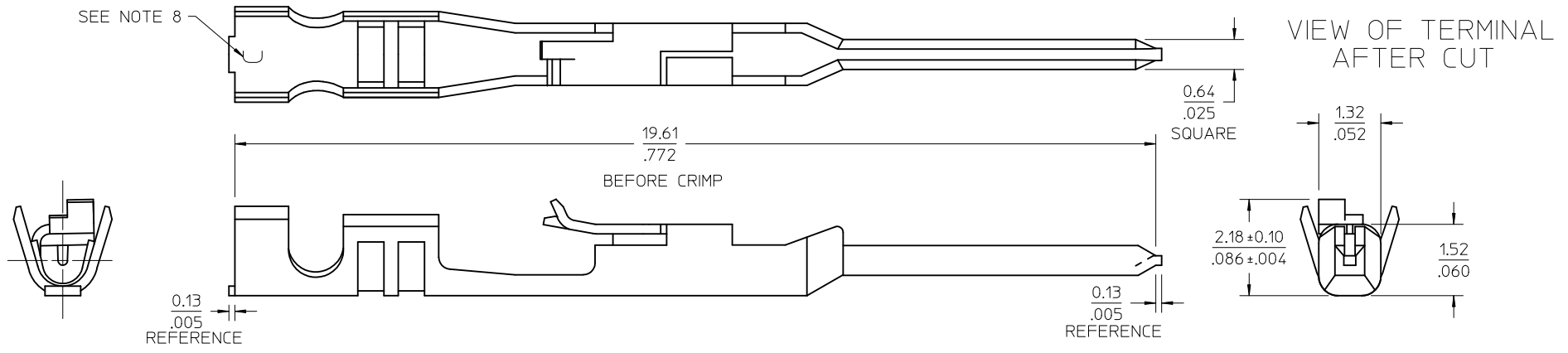
[70066 Housing](#), [70107 Housing](#)

Application Tooling | [FAQ](#)

*Tooling specifications and manuals are
 found by selecting the products below.
 Crimp Height Specifications are then
 contained in the Application Tooling
 Specification document.*

Global

Description	Product #
Fine Adjust Applicator for SL™ Crimp Terminal	0639020600



- NOTES:
1. MATERIAL: PHOSPHOR BRONZE, 0.20/0.008 THICK
 2. FINISH: 3.81 MICROMETERS/150 MICROINCHES TIN OVER NICKEL UNDERPLATE OVERALL
 3. PRODUCT SPECIFICATION: PS-70021
 4. PACKAGING: PARTS SUPPLIED IN REEL FORM
 5. TERMINAL FOR USE WITH: 70066-**** & 70107-**** HOUSINGS
 6. TERMINAL TO BE USED WITH: 22-24 AWG STRANDED WIRE WITH .064 DIAMETER MAXIMUM INSULATION
 7. REFER TO MOLEX OPERATIONAL AND SERVICE MANUAL FOR DETAILS
 8. CRIMP SIZE INDICATOR: C=22-24 AWG

ADD VIEW W/CARRIER EC NO: UCP2010-2842 DRW:MSI.BARRA 2010/05/07 CHKD:DMORGAN 2010/04/29 APPR:SMILLER 2010/05/11	QUALITY SYMBOLS 	GENERAL TOLERANCES (UNLESS SPECIFIED)		DIMENSION STYLE MM/IN	SCALE 15:1	DESIGN UNITS INCH	THIRD ANGLE PROJECTION													
		<table border="1"> <tr> <th></th> <th>mm</th> <th>INCH</th> </tr> <tr> <td>4 PLACES</td> <td>± .010</td> <td>± .0004</td> </tr> <tr> <td>3 PLACES</td> <td>± .015</td> <td>± .0005</td> </tr> <tr> <td>2 PLACES</td> <td>± 0.25</td> <td>± .015</td> </tr> <tr> <td>1 PLACE</td> <td>± 0.35</td> <td>± .014</td> </tr> </table>		mm	INCH	4 PLACES	± .010	± .0004	3 PLACES	± .015	± .0005	2 PLACES	± 0.25	± .015	1 PLACE	± 0.35	± .014	DRAWN BY MSI.BARRA	DATE 2010/04/29	TITLE TERMINAL, MALE CRIMP
			mm	INCH																
		4 PLACES	± .010	± .0004																
3 PLACES	± .015	± .0005																		
2 PLACES	± 0.25	± .015																		
1 PLACE	± 0.35	± .014																		
ANGULAR ±1/2°	CHECKED BY DMORGAN	DATE 2010/04/29	APPROVED BY SMILLER	DATE 2010/05/11																
DRAFT WHERE APPLICABLE MUST REMAIN WITHIN DIMENSIONS	MATERIAL NO. 70021-1021	DOCUMENT NO. SD-70021-1021	SHEET NO. 1 OF 1																	