

MATERIAL AND FINISH:

Insulator: PBT, black, UL-94V-0

Contacts: Brass, Nickel plated

Terminals: Brass, Tin plated

ELECTRICAL SPECIFICATIONS:

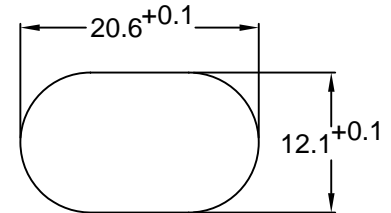
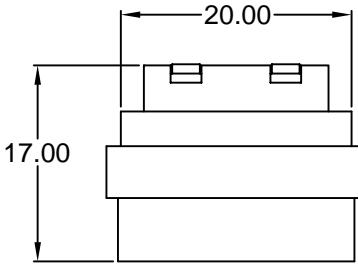
Rated current: 2.5A

Rated voltage: 250VAC



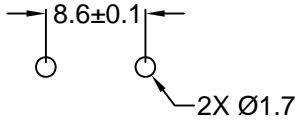
Insulation resistance: 100 Mohm min. @ 500VDC

Dielectric withstanding voltage: 2000VAC for one minute

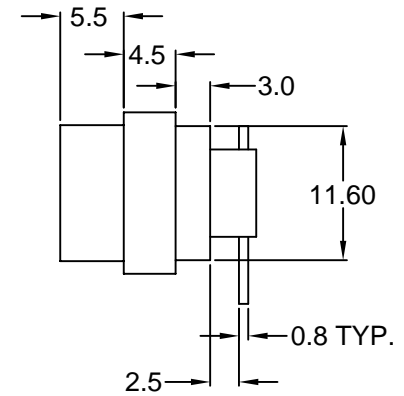
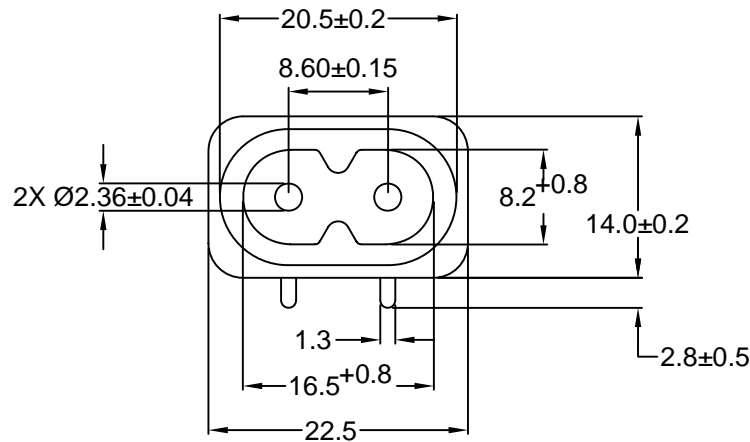


RECOMMENDED PANEL CUTOUT

RoHS COMPLIANT



RECOMMENDED PCB LAYOUT (TOP VIEW)



REVISIONS

REV	DATE	CHANGE	CHNG	CHK	APPR
B	10/01	REMOVE SOLDER TABS	LH		KH
C	10/14	ADD DIM. SIDE VIEW	LH		KH
D	10/28	UPDATE HOLE SIZE	LH		KH
E	9/29/98	REDRAWN & UPDATED	LH		KH
F	5/9/00	REVISED & UPDATED	TD		JJ
G	11/21/01	REVISED / UPDATED	GQ		TD

TOLERANCE UNLESS OTHERWISE SPECIFIED	
X	± 1
X.X	± 0.4
X.XX	± 0.20

DRAWN BY	LFH	DATE:	09/29/98
CHECK BY	AH	DATE:	9/29/98
APPR BY	SS	DATE:	9/29/98

**Power Dynamics, Inc.**  
 Phone: 973 560-0019 Whippany, New Jersey Fax: 973 560-0076

PART: MINIATURE IEC 60320 C8 APPL. INLET; MATING FACE EXTENDED 5.5mm FROM FLANGE, PCB MOUNT

**42R51-5123**

SIZE: A  
SCALE: NTS

ALL DIMENSIONS FOR REFERENCE ONLY  
DIMENSIONS ARE IN MILLIMETERS

SHEET 1 of 1  
REV: G