

78M09

FEATURES:

Maximum Output current ICM: 0.5A

Output voltage VO: 9V

Continuous total dissipation

PD: 1.25 W(Ta=25°C)

TO-252-2L

1.IN

2.GND

3.OUT



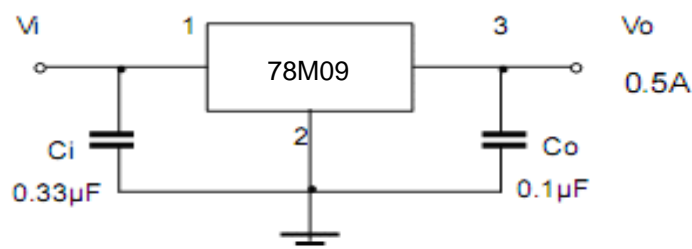
ABSOLUTE MAXIMUM RATINGS(Operating temperature unless otherwise specified)

Symbol (符号)	Parameter (参数名称)	Value (额定值)	Units (单位)
Vi	Input Voltage	35	V
TOPR	Operating junction Temperature Range	0~+125	°C
TstG	Storage Temperature Range	-55~+150	°C

ELECTRICAL CHARACTERISTICS (Tamb=25°C unless otherwise specified)

Parameter	Symbol	Test conditions	MIN	TYP	MAX	UNIT
Output voltage	Vo	25°C	8.65	9	9.35	V
		11.5V ≤ Vi ≤ 24V, Io=5mA~350mA Po ≤ 15W 0-125°C	8.55	9	9.45	V
Load Regulation	ΔVo	Io=1mA~500mA 25°C		20	180	mV
		Io=5mA~200mA 25°C		10	90	mV
Line regulation	ΔVo	11.5V ≤ Vi ≤ 26V Io=200mA		6	100	mV
		12V ≤ Vi ≤ 26V Io=200mA 25°C		2	50	mV
Quiescent Current	Iq	25°C		4.6	6	mA
Quiescent Current Change	ΔIq	11.5V ≤ Vi ≤ 26V Io=200mA 0-125°C			0.8	mA
	ΔIq	5mA ≤ Io ≤ 350mA 0-125°C			0.5	mA
Output Noise Voltage	VN	10Hz ≤ f ≤ 100KHz 25°C		60		uV
Ripple Rejection	RR	13V ≤ Vi ≤ 23V, f=120Hz Io=300mA 0-125°C	56	80		dB
Dropout Voltage	Vd	Io=350mA 25°C		2		V

TYPICAL APPLICATION



Typical Characteristics

