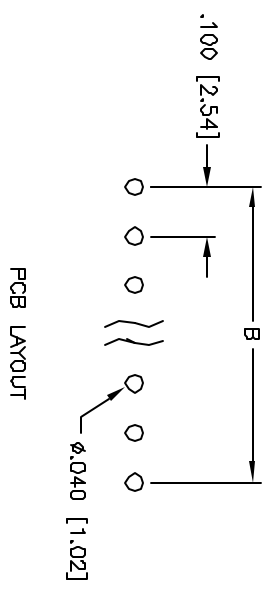
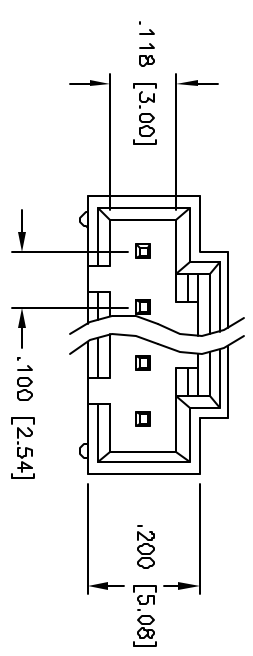
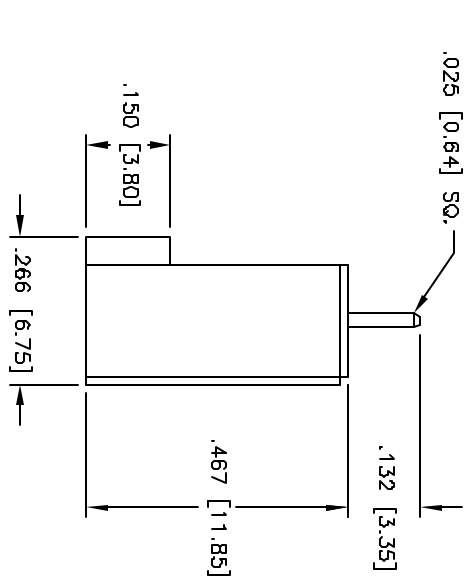
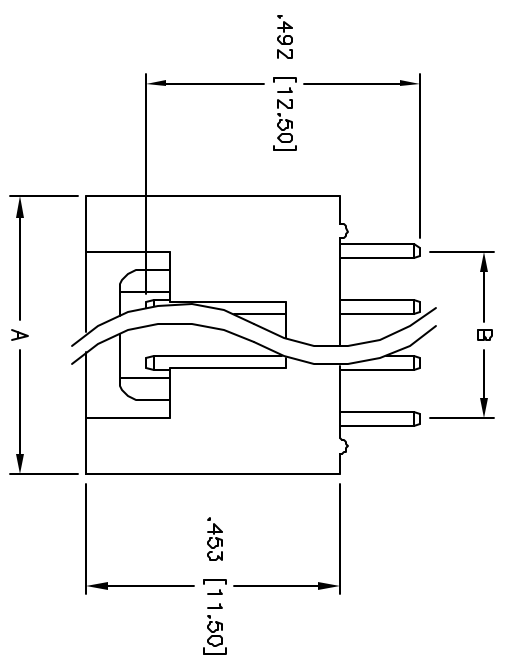


Rev	AWO #	Description	Date	Appr
-		RELEASED	4/7/05	

APPROVED: \_\_\_\_\_  
 DATE: \_\_\_\_\_ TITLE: \_\_\_\_\_



Positions: 2 thru 12  
 A = .100 [2.54] x No. of Positions + .100 [2.54]  
 B = .100 [2.54] x No. of Spaces

**SPECIFICATIONS:**

**Material:**  
 Insulator: Nylon 66, glass reinforced, rated UL 94V-0  
 Insulator color: Black  
 Contacts: Phosphor Bronze  
 Plating:  
 Tin over Copper underplate overall  
**Electrical:**  
 Operating voltage: 250 VAC max  
 Current rating: 3 Amps max  
 Contact resistance: 30 mohms max  
 Insulation resistance: 1,000 Mohms min @ 500 VDC  
 Dielectric withstanding voltage: 500 VAC for 1 minute  
**Temperature Rating:**  
 Operating temperature: -40°C to +105°C  
**Environmental:**  
 Lead free, RoHS compliant  
 Recommended soldering temp: 230°C for 5 seconds



**ADAM TECH**

909 Rahway Avenue, Union, NJ 07083  
 Phone: 908-687-5000 Fax: 908-687-5710

TITLE  
**.100 [2.54] LATCHING HEADER STRAIGHT, PCB**

UNLESS OTHERWISE SPECIFIED ALL DIMENSIONS ARE INCHES [MM] TOLERANCES: EXCEPT AS NOTED		HOLE SIZES		DATE	
INCHES	±.010	ØXX	±.010	DATE	
XX	±.020	ØXXX	±.010		
.XXX	±.015	ØXXX	±.010		
APPROVALS					
DRAWN	SS	4/7/05			
CHECKED					
APPROVED					
SIZE	PART NO.	CDR-XX-1TS		SCALE	NIB
REF:				SHEET	1 OF 1