

Table with columns: PART NUMBER, REVISION, DESCRIPTION, FEED TYPE, CONVERT TO, PART NUMBERS REQUIRED. Includes a diagram of the applicator.

Table: APPLICATOR DATA. Columns: CRIMP, SIZE, TYPE. Rows: WIRE (1.40 mm), INSUL (1.78 mm).

Table: TERMINAL DATA: TE TERMINAL TE CRIMP SPECIFICATION. Includes wire strip length, insulation diameter range, and terminals applied.

Table: WIRE SIZE, CRIMP HEIGHT mm [INCH], CRIMP HEIGHT REFERENCE SETTING. Rows for 20, 22, and 24 AWG.

- 1 RECOMMENDED SPARE PARTS
2 GREASE BEARING SURFACES LIGHTLY
3. LUBRICATE DAILY PER THE APPLICATOR INSTRUCTION SHEET SUPPLIED WITH THE APPLICATOR.
4 APPLICATOR SPECIFIC DATA TO BE ENTERED INTO BLANK MEMORY CHIP AT ASSEMBLY.
5. ADJUSTMENT OF THE STRIPPER MAY BE REQUIRED WHEN MOVING THE APPLICATOR BETWEEN BENCH AND LEADMAKER APPLICATIONS.
6 APPLY PART NUMBER 1-23419-5 LOCTITE TO THREADS OF ITEMS 50 & 62.
7 GREASE THREADS, GROOVE AND O-RING ON ITEMS 35 & 252.
8 MAGNET, ITEM 166 MUST BE ORIENTED CORRECTLY IN ORDER TO PROPERLY ACTUATE THE COUNTER.
9 CRIMP HEIGHT REFERENCE SETTING WAS THE SETTING USED WHEN THE APPLICATOR WAS QUALIFIED AT THE FACTORY.
10 SPARE FEED CAM STORAGE LOCATION REFER TO INSTRUCTION SHEET FOR ADDITIONAL INFORMATION.
11 TO CONVERT THE APPLICATOR TO A NON-CARRIER CUTTING STYLE, REMOVE ITEM 13 AND ATTACH TO THE LOCATION ON THE BACK SIDE OF THE HOUSING.
12 WHEN ASSEMBLING -6 NON-CRIMP HEIGHT ADJUST APPLICATOR USE SHIM PACK 2119957-2 TO ALIGN APPLICATOR'S MAXIMUM WIRE CRIMP HEIGHT AT NORMAL TERMINATOR SHUT HEIGHT
13 TERMINAL LUBRICANT IS RECOMMENDED.

\*WARNING
ON INSTALLATION, SET WIRE DISC, ITEM 40 TO LARGEST WIRE SIZE SETTING. USE OF SETTINGS BELOW MINIMUM REQUIRED CRIMP HEIGHT SETTING WILL CAUSE DAMAGE TO CRIMP TOOLING.

Table with columns: PART NO, DESCRIPTION, ITEM NO. Lists various components like applicator shim pack, o-ring, push rod, bushing, etc.

ATLANTIC VERSION
Shown on sheets 1 of 4 & 2 of 4
(Pacific version shown on sheets 3 of 4 & 4 of 4)

Table: REVISIONS. Columns: REV, LTR, DESCRIPTION, DATE, DWN, APVD. Includes revisions A and B.

Large table listing various components and their quantities. Columns include item numbers, descriptions like CAM, SNAIL, INSULATION ADJUSTMENT, and quantities.

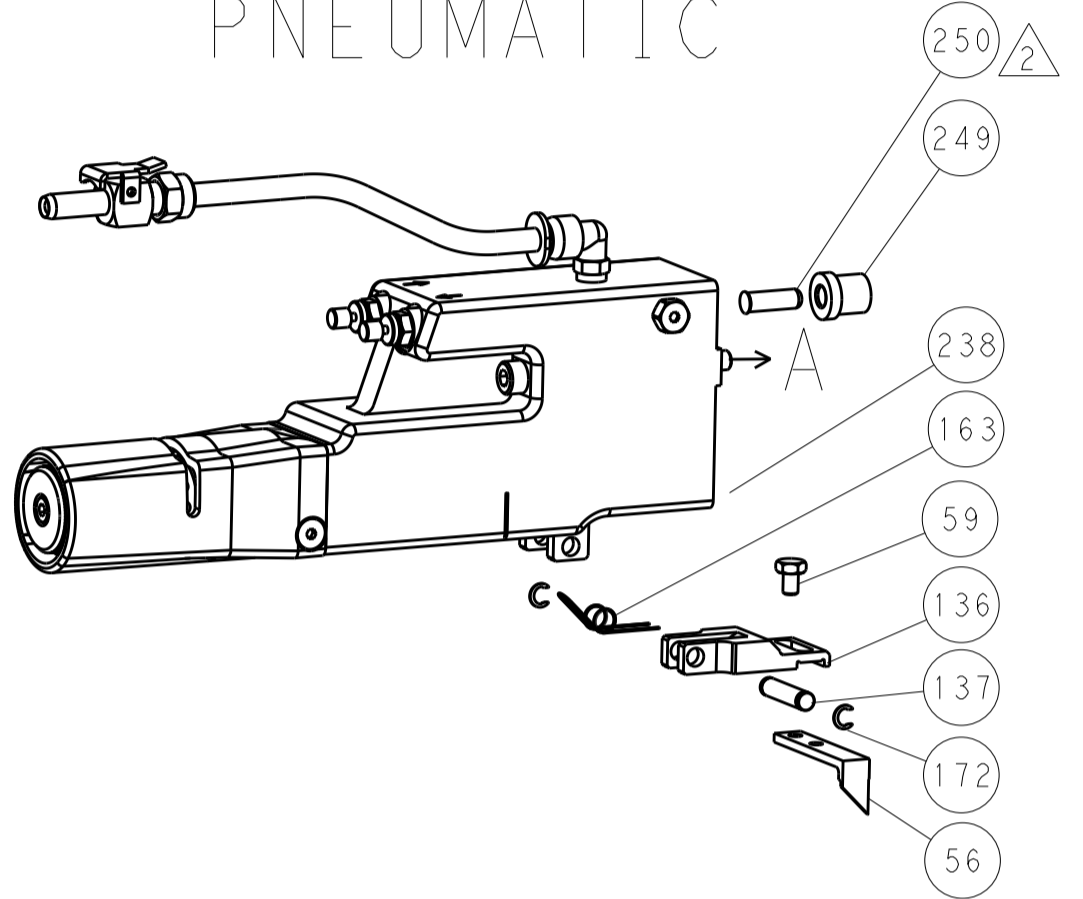
Technical drawing information block including dimensions, tolerances, materials, and a title block with company name (STE) and product name (Ocean Side Feed Applicator).

| LOC |    | DIST |     | REVISIONS   |      |     |      |
|-----|----|------|-----|-------------|------|-----|------|
| A   | 66 | P    | LTM | DESCRIPTION | DATE | OWN | APVD |
| -   | -  | -    | -   | SEE SHEET 1 | -    | -   | -    |

### FEED TYPE MECHANICAL



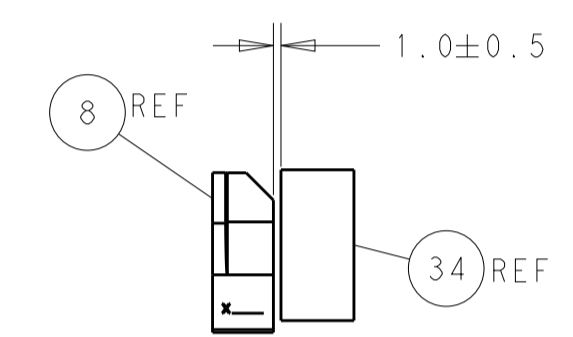
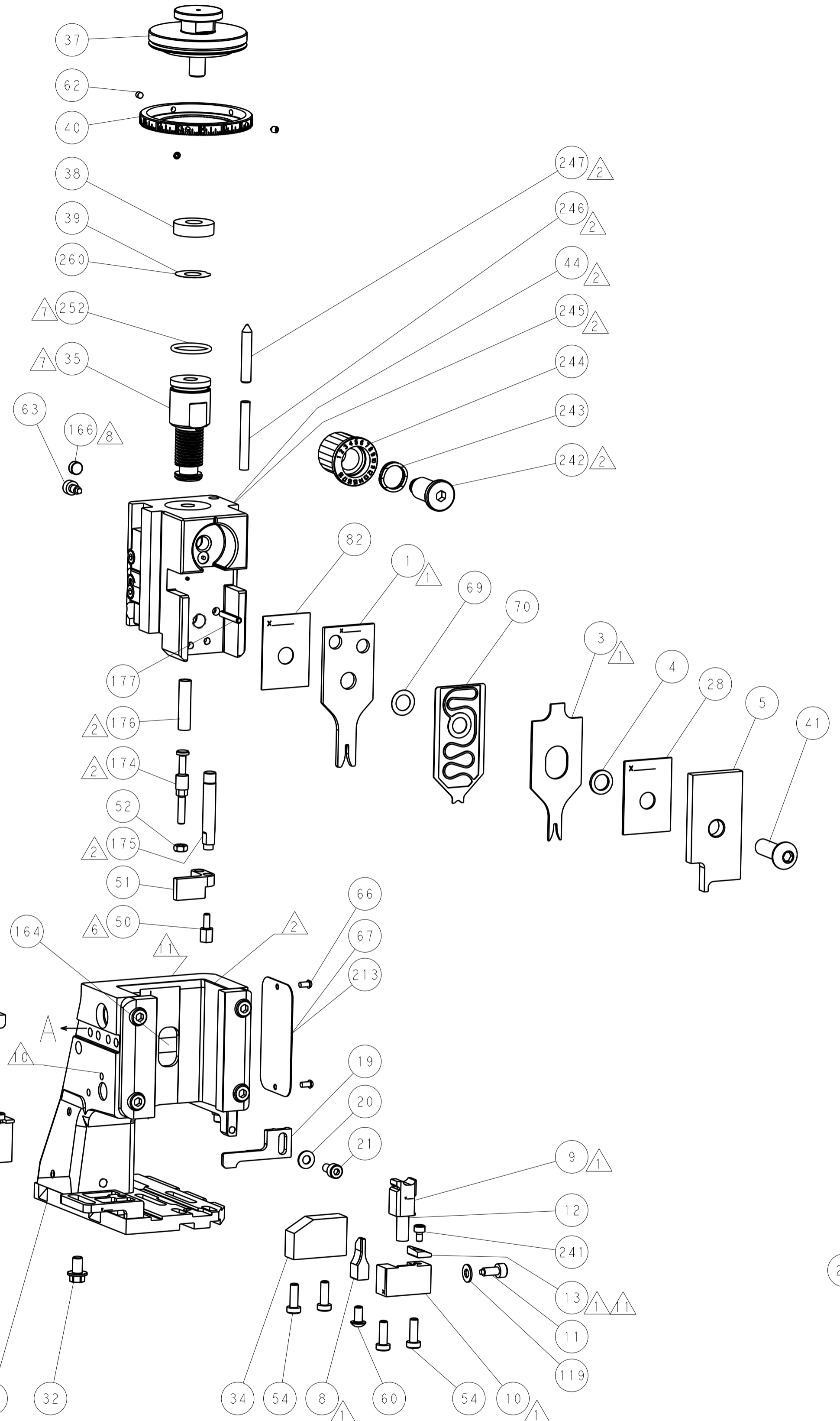
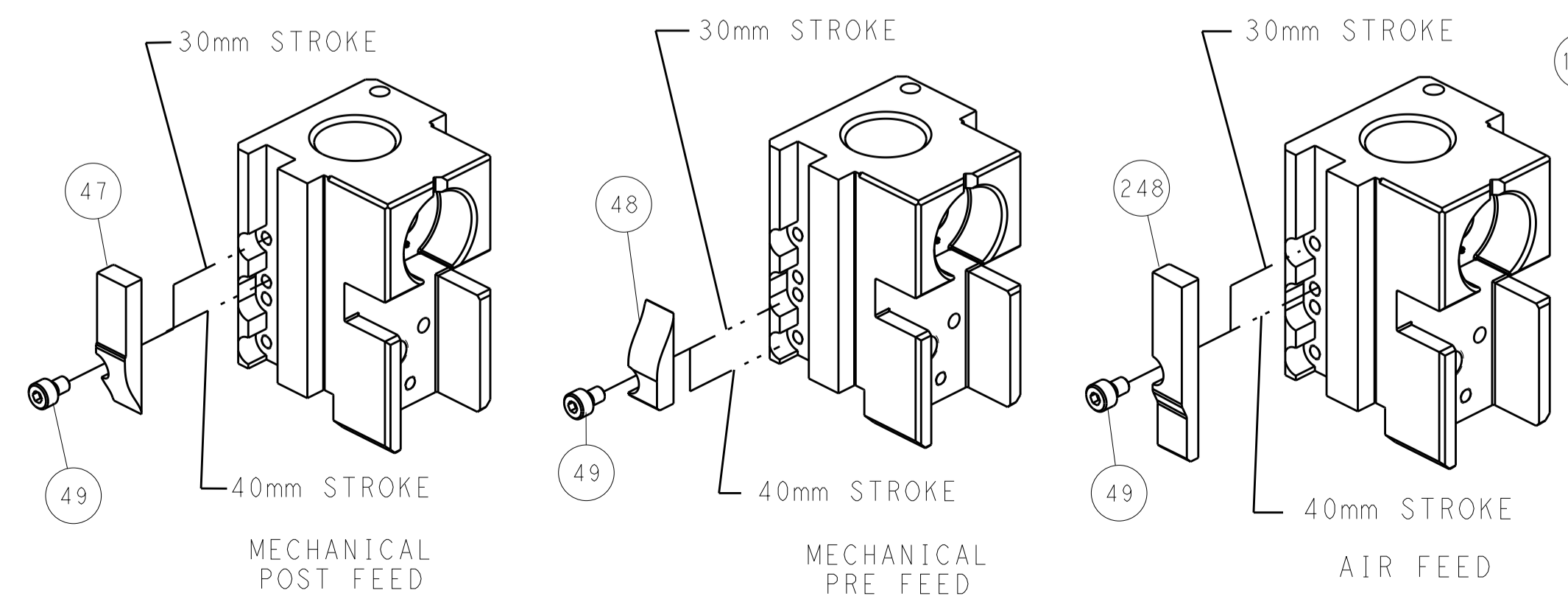
### PNEUMATIC



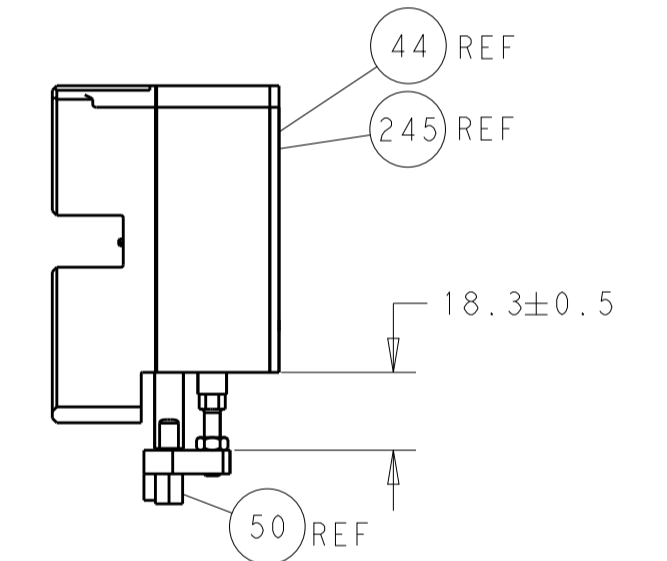
### SERVO LATCH PLATE



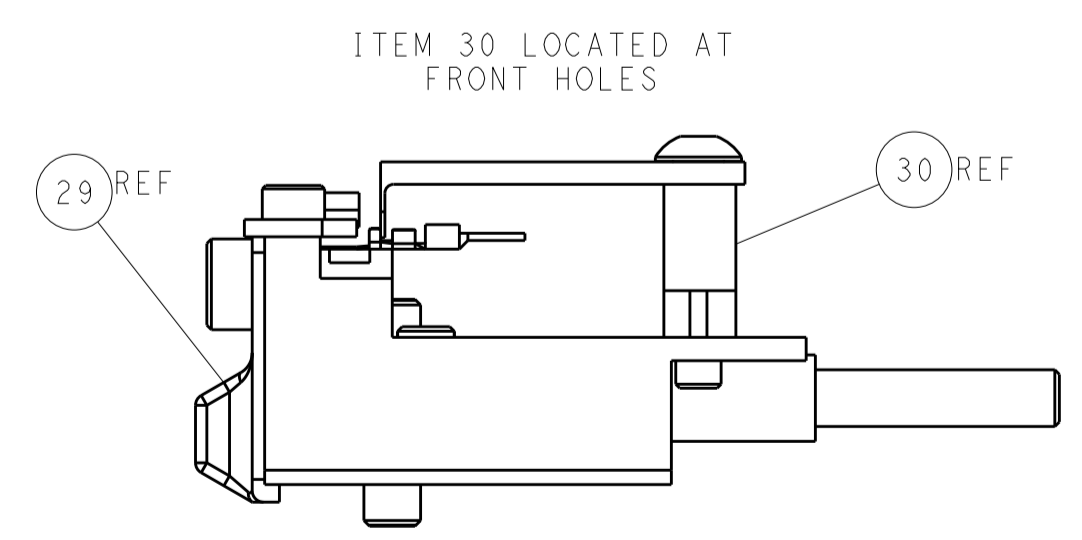
### CAM POSITIONS



TERMINAL SUPPORT LOCATION



HOLDDOWN SET-UP



FEED TRACK POSITION GUIDE BY INSULATION BARREL

**ATLANTIC VERSION**  
 Shown on sheets 1 of 4 & 2 of 4  
 (Pacific version shown on sheets 3 of 4 & 4 of 4)

|  |         |  |         |                         |         |                                  |  |
|--|---------|--|---------|-------------------------|---------|----------------------------------|--|
| DIMENSIONS:                            |         | TOLERANCES UNLESS OTHERWISE SPECIFIED: |         | DWN: HOFFNER 2/24/2012  |         | TE Connectivity                  |  |
| mm                                     | 0 PLC ± | 1 PLC ±                                | 2 PLC ± | 3 PLC ±                 | 4 PLC ± | Harrisburg, PA 17105-3608        |  |
| MATERIAL:                              |         | FINISH:                                |         | CHK: T. ELBIN 2/27/2012 |         | NAME: Ocean Side Feed Applicator |  |
| CUSTOMER ACCESSIBLE PRODUCTION DRAWING |         | SCALE: 1:2                             |         | SHEET 2 OF 4            |         | REV C                            |  |

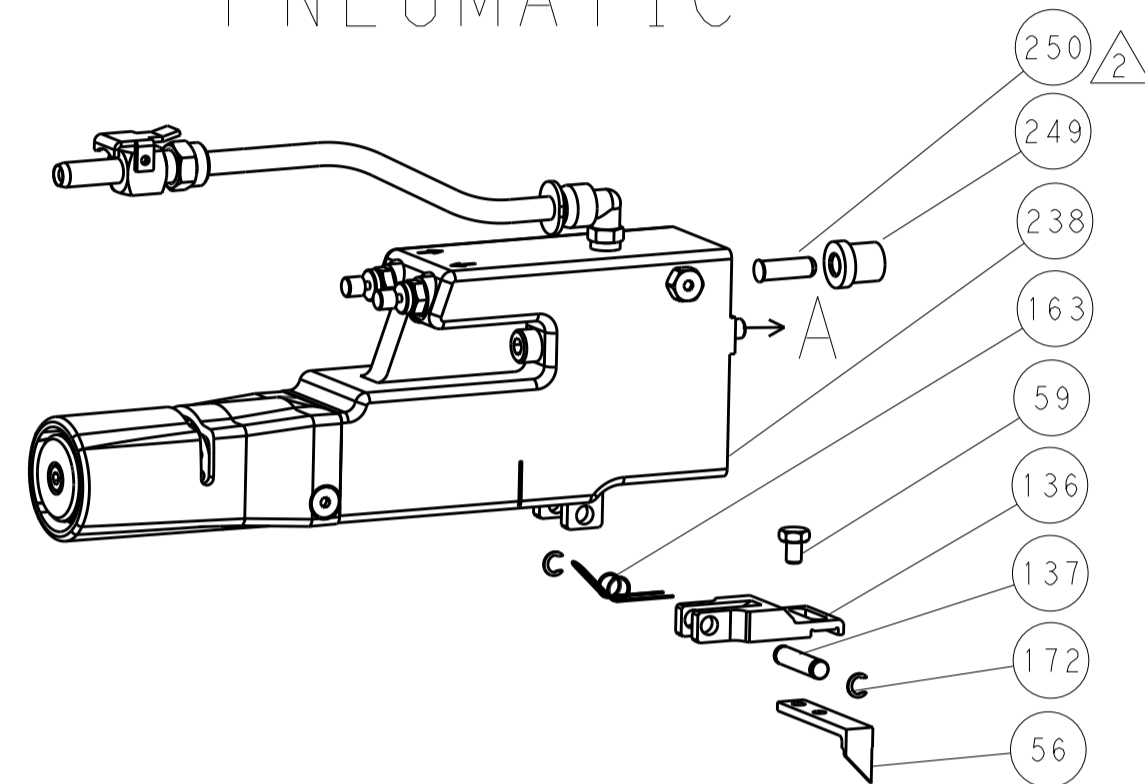


| LOC |    | DIST |     | REVISIONS   |      |     |      |
|-----|----|------|-----|-------------|------|-----|------|
| A   | 66 | P    | LTN | DESCRIPTION | DATE | DMN | APVD |
|     |    | -    |     | SEE SHEET 1 |      |     |      |

# FEED TYPE MECHANICAL



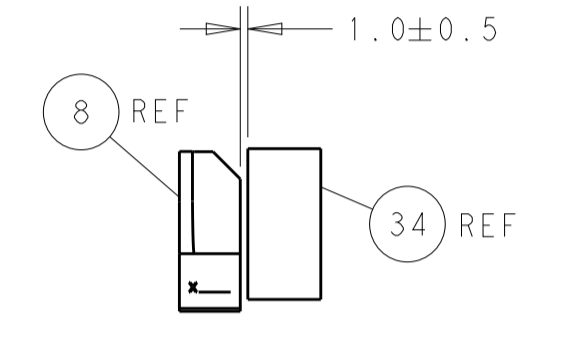
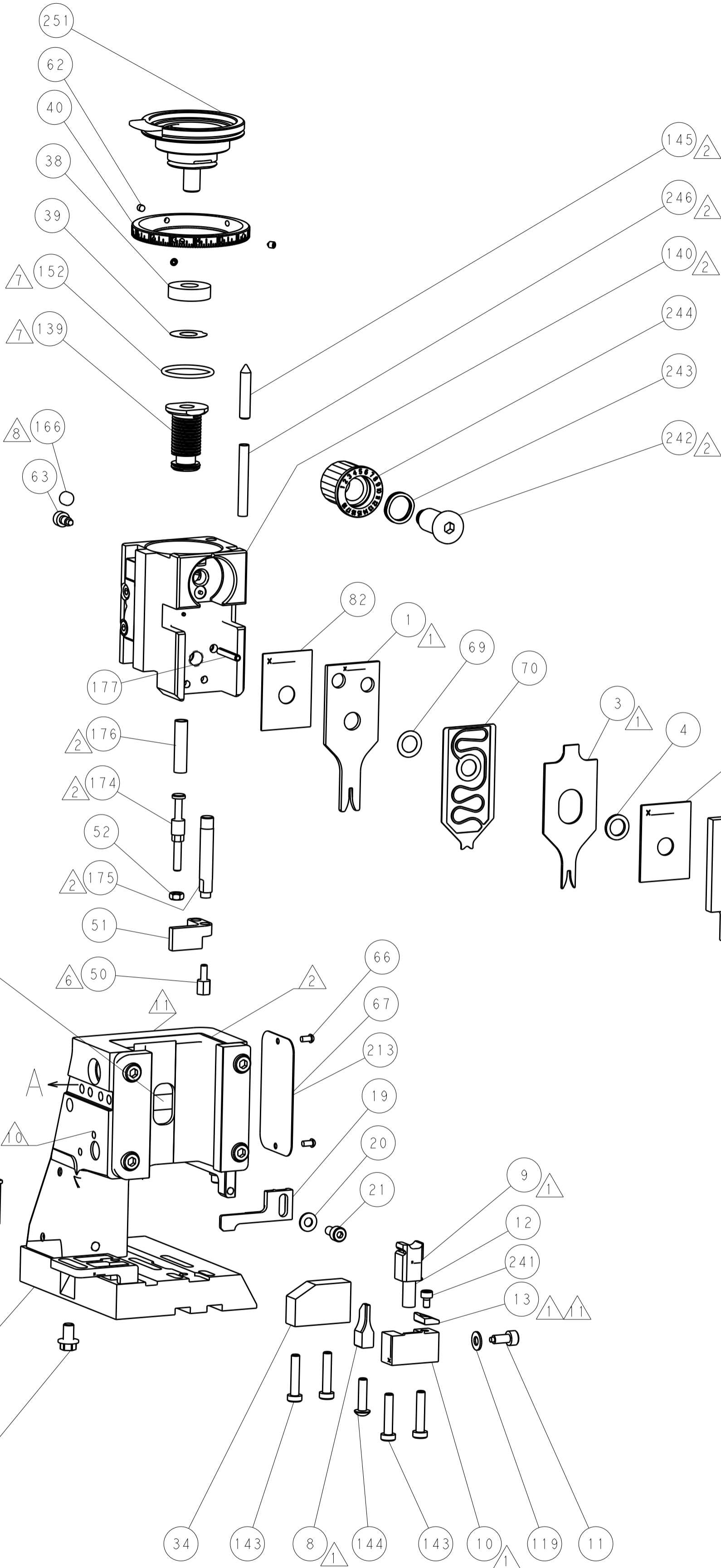
# PNEUMATIC



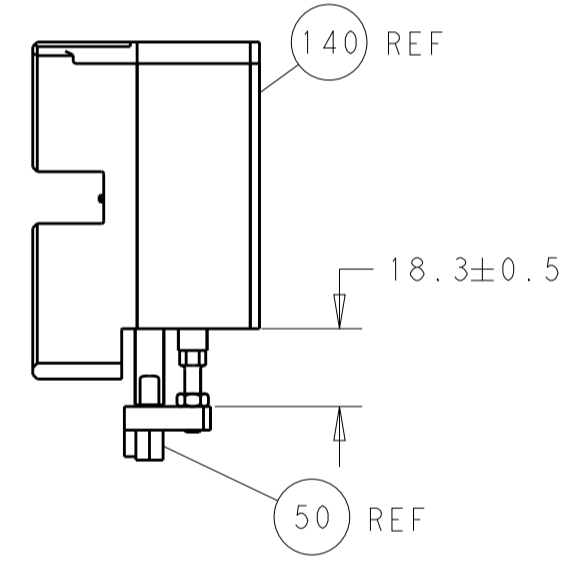
# SERVO LATCH PLATE



# CAM POSITIONS

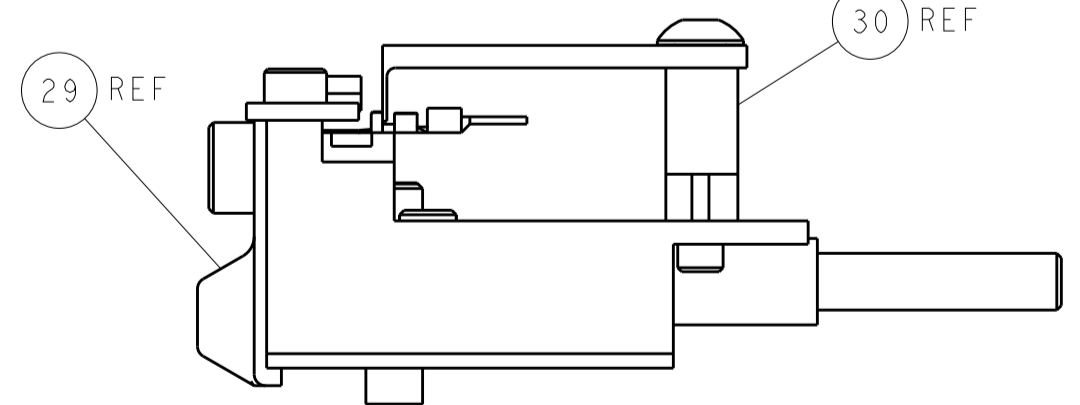


TERMINAL SUPPORT LOCATION



HOLDDOWN SET-UP

ITEM 30 LOCATED AT FRONT HOLES



FEED TRACK POSITION GUIDE BY INSULATION BARREL

**PACIFIC VERSION**  
 Shown on sheets 3 of 4 & 4 of 4  
 (Atlantic version shown on sheets 1 of 4 & 2 of 4)

|             |         |  |         |  |         |  |                           |
|-------------|---------|--|---------|--|---------|--|---------------------------|
| DIMENSIONS: |         | TOLERANCES UNLESS OTHERWISE SPECIFIED: |         | DWG: HOFFNER 2/24/2012                 |         | TE Connectivity                              |                           |
| mm          | 0 PLC ± | 1 PLC ±                                | 2 PLC ± | 3 PLC ±                                | 4 PLC ± | 5 PLC ±                                      | Harrisburg, PA 17105-3608 |
| MATERIAL:   |         | FINISH:                                |         | CHK: T. ELBIN 2/21/2012                |         | NAME: Ocean Side Feed Applicator             |                           |
|             |         |  |         | APVD: T. ELBIN 2/21/2012               |         | SIZE: CAGE CODE: DRAWING NO: 00779 ©=2151616 |                           |
|             |         |  |         | WEIGHT:                                |         | RESTRICTED TO:                               |                           |
|             |         |  |         | CUSTOMER ACCESSIBLE PRODUCTION DRAWING |         | SCALE: 1:2 SHEET 4 OF 4 REV C                |                           |