

# Coaxial DC Block SMA

0.0001 to 8 GHz

**NEW!**  
**BLK-89**

## Maximum Ratings

Operating Temperature	-55°C to 100°C
Storage Temperature	-55°C to 100°C
Max. DC input voltage	50V

## Features

- broadband performance
- low insertion loss
- rugged unibody construction
- off-the-shelf availability

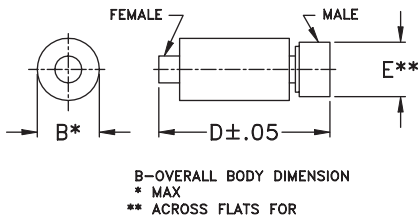


CASE STYLE: FF888  
CONNECTOR: SMA (F) - SMA (M)  
PRICE: \$14.95 ea.  
QTY. (1-9)

## Applications

- test and measurement instrumentation
- communication systems
- defense systems

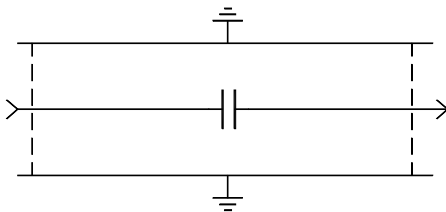
## Outline Drawing



## Outline Dimensions (inch/mm)

B	D	E	wt.
.46	1.18	.31	grams
11.68	29.97	7.87	7.0

## Schematic



## Electrical Specifications at 25°C

FREQUENCY (GHz)	INSERTION LOSS (dB)		RETURN LOSS (dB)	
	Typ.	Max.	Typ.	Min.
0.0001-0.1	.010	.09	40	20
0.01-1.0	0.10	0.3	36	25
1.0-4.0	0.15	0.8	24	18
4.0-8.0	0.5	0.9	20	13

## Typical Performance Data

FREQUENCY (MHz)	INSERTION LOSS (dB)	RETURN LOSS (dB)	
		MALE	FEMALE
0.3	0.01	31.86	31.89
0.6	0.01	32.19	32.23
0.9	0.01	32.52	32.58
1.0	0.01	32.63	32.69
50.0	0.02	48.75	48.76
100.0	0.03	44.40	44.44
200.0	0.04	40.26	40.33
300.0	0.05	37.96	38.27
400.0	0.06	36.24	36.45
500.0	0.06	34.94	35.08
700.0	0.07	32.57	32.78
800.0	0.08	31.67	31.84
900.0	0.08	30.86	31.04
1000.0	0.09	30.27	30.41
2000.0	0.12	26.09	26.06
3000.0	0.18	24.48	24.04
4000.0	0.24	22.65	22.58
5000.0	0.41	20.64	21.77
6000.0	0.47	20.26	22.30
7000.0	0.42	19.52	21.11
8000.0	0.51	17.29	18.16

