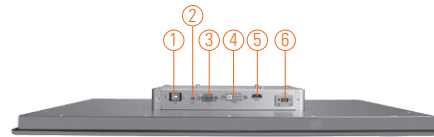
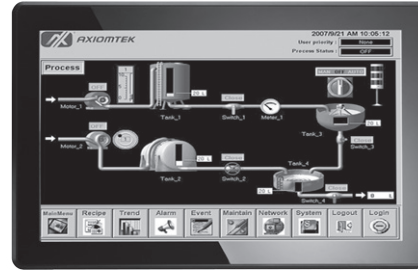
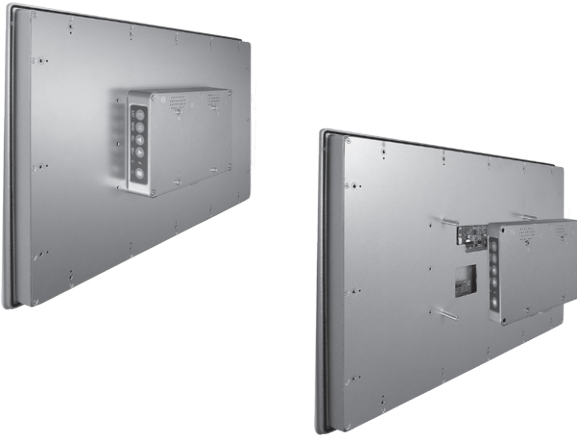


# P6217W NEW

21.5" FHD TFT Widescreen Industrial LCD Monitor

## Features

- 21.5" FHD TFT 250 nits with projective capacitive multi-touch
- NEMA 4/12 (IP65) compliant flat panel monitor
- Supports panel mount, wall mount and VESA mount
- Full range screw-type (locked) AC-in or 24V DC-in (option)
- VGA, HDMI and DVI with multi-signal inputs



- |                    |   |
|--------------------|---|
| 1. T/S port        | 4. DVI-D                                  |
| 2. Audio (Line-in) | 5. HDMI                                   |
| 3. VGA             | 6. Screw type or Phoenix type power input |

## Introduction

The P6217W is a slim-type industrial LCD monitor with flat front bezel design, which adopts 21.5-inch 250 nits full HD LCD display and supports multi-signal interfaces including DVI, VGA, S-Video, Video. Featuring IP65 (NEMA 4)-rated front bezel, screw-type adaptor plug design, and 12/24V DC-In, the 21.5-inch P6217W is designed to fit for all kinds of industrial environments. Moreover, the P6217W supports panel mount, wall mount or VESA FPMPI (Video Electronics Standards Association Flat Panel Monitor Physical Mounting Interface) mounting. With the compact mechanism design, the P6217W can be deployed easily in any space-limited place. It is especially suitable for POI/POS, HMI and all kinds of heavy-duty industrial fields.

## Specifications

Front Bezel	NEMA 4/12 (IP65)-compliant, flat front bezel	
Mounting	Panel mount, wall mount and VESA arm FPMPI mounting (video electronics standards association Flat Panel monitor physical mounting interface)	
LCD Panel	Display	21.5" FHD TFT LCD
	Max. Resolution	1920 x 1080
	Max. Colors	16.7M
	Active Area (mm)	476.64 x 268.11
	Pixel Pitch (mm)	0.24 x 0.24
	Response Time	18 ms
	Backlight	LED
	Backlight MTBF	50,000 hrs
	Viewing Angle (H/V)	178°/178°
	Contrast Ratio	3000 (TYP.)
Brightness (cd/m <sup>2</sup> )	250 nits	
Display Control	OSD (on screen display)	
Display Mode	VGA 640 x 350 (70Hz), VGA 640 x 480 (60/72/75Hz), VGA 720 x 400 (70Hz), SVGA 800 x 600 (60/72/75Hz), XGA 1024 x 768 (60/72/75Hz), WXGA 1366 x 768 (60Hz), FHD 1920 x 1080 (60Hz)	

## Specifications

Input Signal	VGA HDMI DVI (only for DVI-D) Touchscreen: USB interface
I/O Connectors	1 x USB for touchscreen version 1 x Audio (Line-in) 1 x VGA input 1 x HDMI 1 x DVI 1 x Screw type or Phoenix type power input
Power Adapter	Screw-type external AC/DC power adapter
Power Consumption	20 W
Touchscreen	Multi-touch projective capacitive (optional)
Dimensions	547.59 mm (21.56") (W) x 339.05 mm (13.34") (D) x 53 mm (2.09") (H)
Packing Dimensions	700 mm (27.56") (W) x 185 mm (7.28") (D) x 510 mm (20.07") (H)
Weight (net/gross)	6.42 kg (14.15 lb)/7.78 kg (17.15 lb)
Environment	Operating temperature: 0°C ~ +45°C (+32°F ~ +113°F) Relative humidity: 20%~90% @ 40°C, non-condensing
Packing List	1x VGA cable 1x RS-232 or USB cable for touchscreen (for touch version) 1x Audio cable 1x EU/US power cord (for AC version)
Certificate	CE

## Ordering Information

P6217W		
AC Power	Panel mount monitor	
	Capacitive (USB)	P6217WPC-AC-U-US-EU
	Glass	P6217WPG-AC-US-EU
24VDC Power	Panel mount monitor	
	Capacitive (USB)	P6217WPC-24VDC-U
	Glass	P6217WPG-24VDC

## Optional Accessories

5946L203800E	HDMI cable
59461713400E	DVI cable
82261510190E	Panel mount kit
82231770050E	Wall mount kit
E226171106	Desktop stand

## Dimensions

