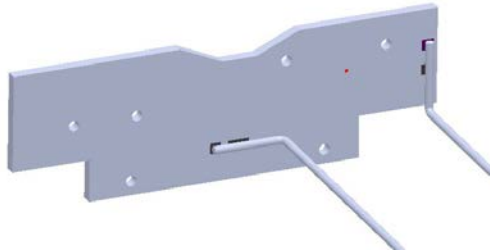


WPANT10065

Wi-Fi / BT and NFC Dual Antenna



WPANT10065-S1A

*Wi-Fi / BT: 2.8" micro co-ax with IPX
MHF connector
NFC: 3.15" twisted pair of wire with Molex
2-pin 502351-0200*

Note: Different cable and connector style requests can be accommodated.

Application

A combo antenna for NFC and Wi-Fi / Bluetooth frequencies.

We can assist your engineers to optimize mounting positions for these antennas in your specific application and can further assist to troubleshoot system integration issues such as TRP/TIS and FCC requirements. We specialize in developing customized Antenna solutions. Please contact sales@worldproducts.com with your specific application requirements.

Electrical Properties

	Wi-Fi / BT Antenna	NFC Antenna
Operating Frequency	2.4 – 2.5 GHz	13.56 MHz
VSWR (Typical)	< 2:1	N/A
Inductance [μH] (Typical)	N/A	Around 3.6 μH
Peak Gain [dBi] (Typical)	3 dBi	N/A
Efficiency [%] (Typical)	60 %	N/A
Polarization	Linear	N/A
Pattern	Near Omni-directional	N/A

Mechanical / Environmental Properties

Antenna Dimensions	2.4" x 0.8" x 0.062" (60.6mm x 19.7mm x 1.6mm)
Antenna Color	Black
Operating / Storage Temperature	-40°C to +125°C
Environmental	Meets standards for UL 94V-0
Hazardous Materials	RoHS Compliant

Picture

