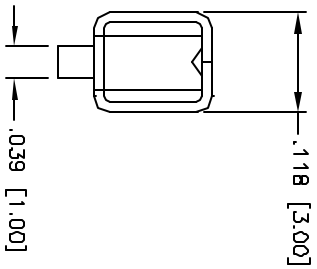
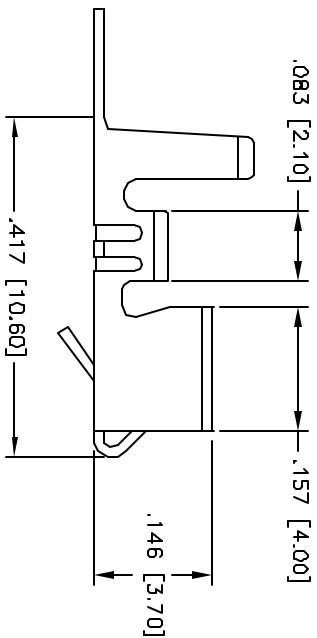
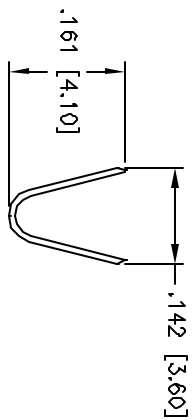
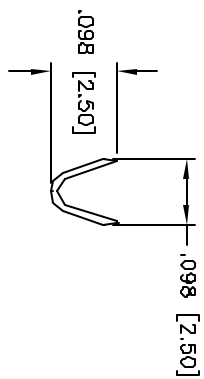
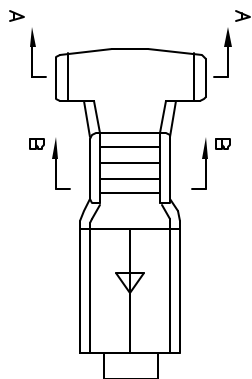


Rev	AWO #	Description	Date	Appr
-		RELEASED	4/12/05	

APPROVED: _____
 DATE: _____ TITLE: _____



SPECIFICATIONS:

Material:

Contact: Brass

Plating:

Tin over Copper underplate overall

Electrical:

Wire range: 18-24 AWC

Operating voltage: 250 VAC max

Current rating: 5 Amps max

Insulation resistance: 1,000 Mohms min

Dielectric withstanding voltage: 1,500 VAC for 1 minute

Temperature Rating:

Operating temperature: -25°C to +85°C

Packaging:

B = 1,000 pieces loose cut

R = 4,000 pieces on reel

Environmental:

Lead free, RoHS compliant



UNLESS OTHERWISE SPECIFIED ALL DIMENSIONS ARE NICHES [MM] TOLERANCES: EXCEPT AS NOTED INCHES	
.X	± .10
.XX	± .020
.XXX	± .015
Ø.X	± .10
Ø.XX	± .010
Ø.XXX	± .010

APPROVALS	DATE
DRAWN	SS
CHECKED	
APPROVED	

DATE
4/12/05

SIZE	PART NO.
X	MTC-CX

ADAM TECH

909 Rahway Avenue, Union, NJ 07083
 Phone: 908-687-5000 Fax: 908-687-5710

CRIMP CONTACT

TITLE	SCALE	SHEET	OF
CRIMP CONTACT	M13	1	1