

KR Electronics, Inc.

General Description

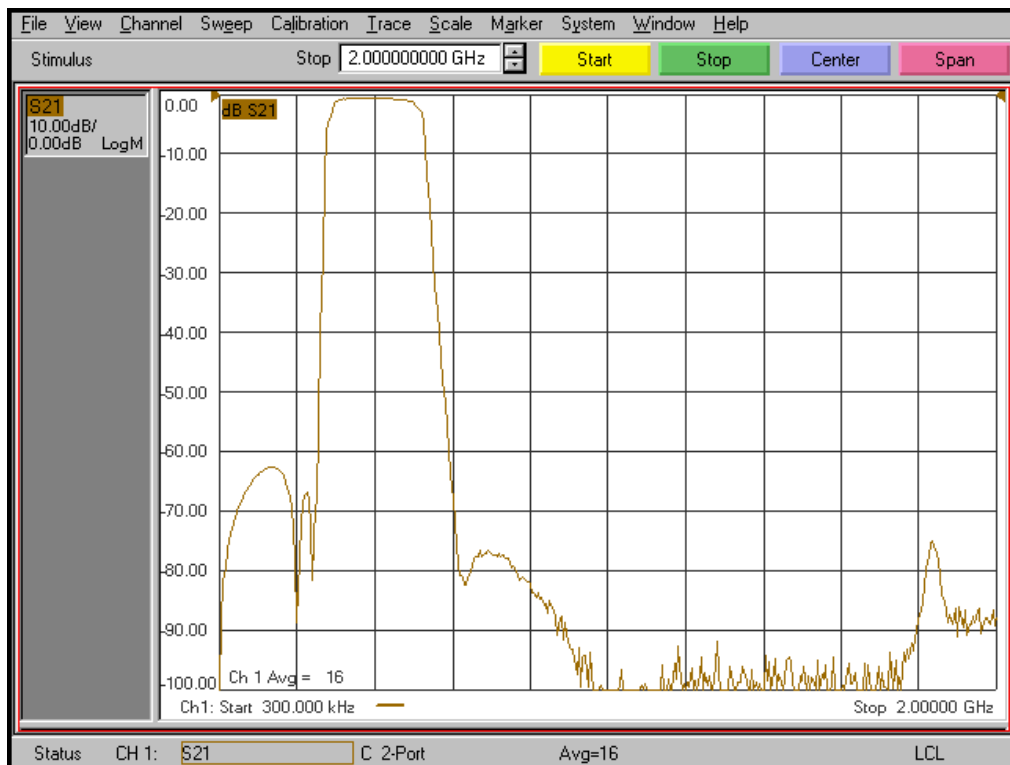
KR Electronics part number 3260-400-SMA is a 400 MHz band-pass filter. Other frequencies are available. Please consult the factory.

Features

- 400 MHz Bandpass Filter
- 2 dB Bandwidth 200 MHz min
- 55 dB min at 250 & 650 MHz
- Sharp Elliptic Type Filter
- 50 Ω Source and Load
- SMA Connectors
- Other frequencies available

Typical Performance

Overall Response
(10 dB/div)

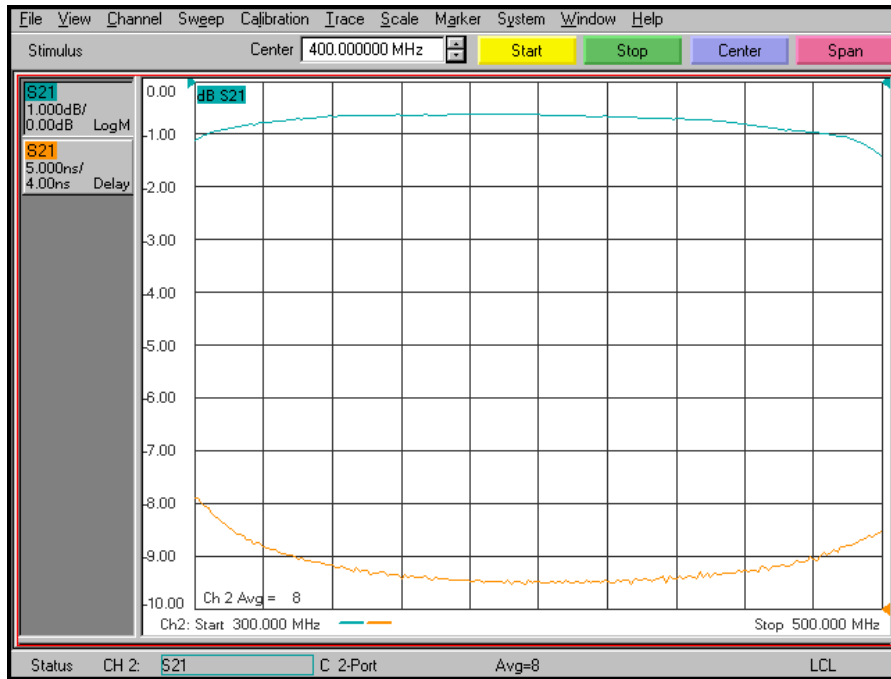


KR Electronics, Inc.
91 Avenel Street
Avenel, NJ 07001

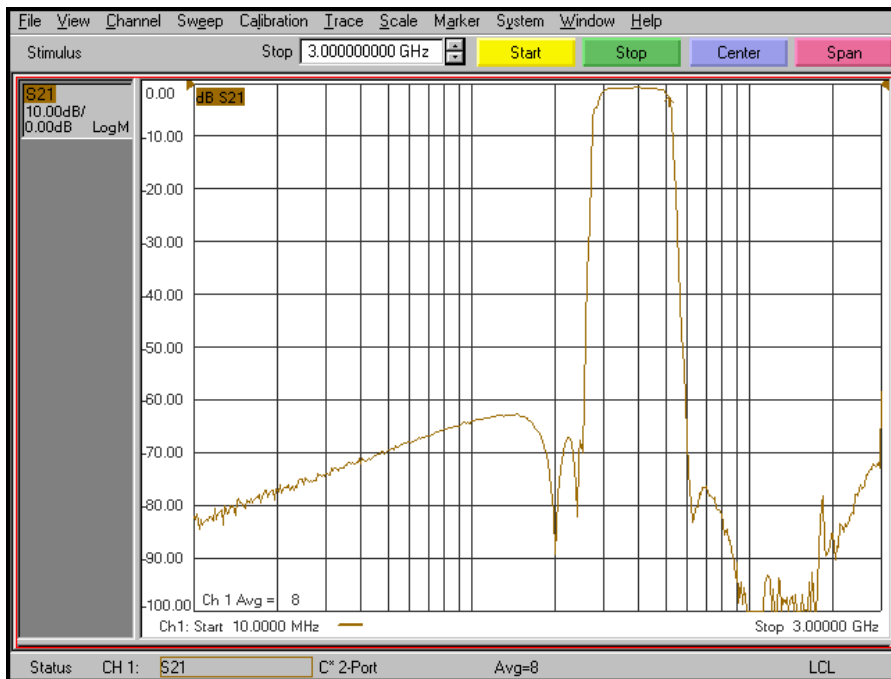
Web www.krfilters.com
Email sales@krfilters.com
Phone (732) 636-1900
Fax (732) 636-1982

KR Electronics 3260-400-SMA

Passband Amplitude & Group Delay (1 dB/div & 5 nsec/div)



Overall Response (10 dB/div)



KR Electronics, Inc.
91 Avenel Street
Avenel, NJ 07001

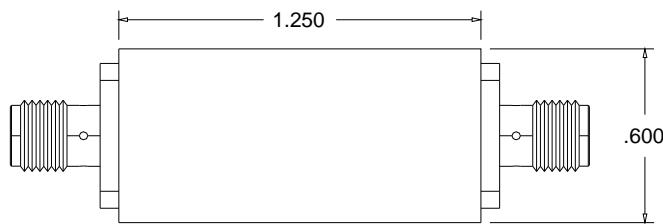
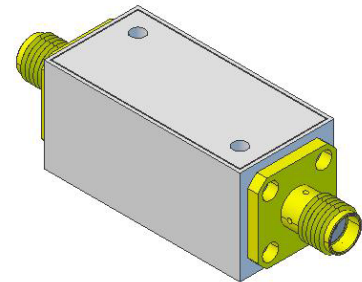
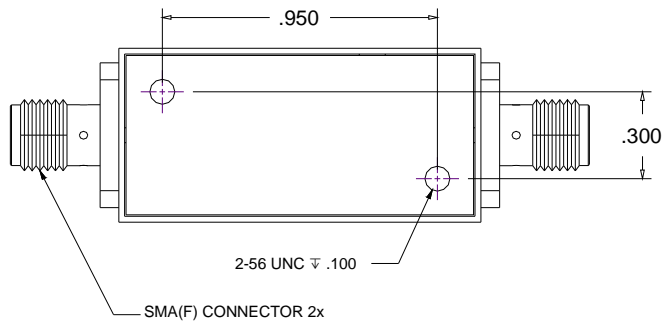
Web www.krfilters.com
Email sales@krfilters.com
Phone (732) 636-1900
Fax (732) 636-1982

KR Electronics 3260-400-SMA

Specifications

Parameter	Specification
Filter type	Bandpass
Center Frequency (Fc)	400 MHz
Insertion Loss at Fc	2 dBa max < 1 dBa typical
2 dBc Bandwidth	200 MHz min
Rejection DC to 250 MHz	55 dBc min
Rejection 650 to 1800 MHz	55 dBc min to 3000 MHz typical
Source and Load	50 Ω

Physical Dimensions



Notes:

1. Dimensions in inches
2. Metal Case
3. SMA(F) Connectors
4. Also available in surface mount package

KR Electronics, Inc.
91 Avenel Street
Avenel, NJ 07001

Web www.krfilters.com
Email sales@krfilters.com
Phone (732) 636-1900
Fax (732) 636-1982