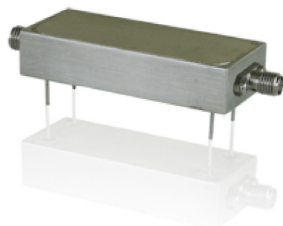


MC Series

Low Frequency Bandpass Filter



PC mountable or connector with lower loss, more complexity, and higher power.

Overview

	Standard Parameters	Special Parameters	Comments
Frequency Range	15 to 150 MHz	2 to 200 MHz	
Percentage Bandwidth	1 to 100%	0.5 to 200%	
Maximum VSWR	1.5:1	1.2:1	
Average Input Power	1 Watt	Up to 10 Watts	Measured up to 10,000 feet
Phase Linearity	± 5°	± 2°	
Phase Matching	± 2°	± 1°	
Maximum Attenuation	Up to 50 dBc	Up to 65 dBc	
Topology	Chebyshev	*Consult Factory	
Nominal Impedance	50 Ohms	**Consult Factory	
Number of Sections	6	12	
Shock	5 G's	Up to 500 G's	See Below
Vibration	5 G's	Up to 500 G's	See Below
Humidity	90%, non-condensing	Up to 100%, non-condensing	See Below
Altitude	Unlimited	Unlimited	See Below
Operating Temperature	0 to +50 °Celsius	-55 to +125 °Celsius	See Below
Storage Temperature	-55 to +85 °Celsius	-65 to +150 °Celsius	See Below
Gross Leak	As required	As required	Additional testing charges will apply
Fine Leak	As required	As required	Additional testing charges will apply
Moisure Resistance	100%	100%	
Dimensions	See chart below	See chart below	
Mounting Options	PC Mount OR CONNECTORIZED		Gross and Fine Leak do not apply to connectorized parts.
Connector	SMA Female or Male	SMC or SMB Female or Male	

Options

Number of Sections ***	Dimensions
2 to 6	2.38" x 1.00" x 0.50"
7 to 12	3.58" x 1.00" x 0.50"

Other parameters may be specified. Please consult factory for any deviation from standard.

*Other topologies are available upon request or design need. These can include, but are not limited to: Gaussian, Butterworth, Bessel, Elliptical, and Pole-placed designs.

**Other impedances can be achieved, but the package is designed as a 50 Ohm unit. Matching to any other impedance will need prior approval and may not be guaranteed.

***Dependant upon frequency range and design requirements. Exact size to be quoted by factory.

Any environmental testing will incur additional charges. Consult factory for costs associated with environmental testing. All filters can be "Designed to" and may not require the additional testing. Each application will be different.

Need help now? Visit Mtronpti.com and click...

 [Request a Quote](#)  [Find a Rep or Distributor](#)  [Contact](#)

Orlando

2525 Shader Rd
Orlando, FL 32804 USA
Phone: 407-298-2000
Fax: 407-293-2979

Shanghai

Room 2215, 22/F
Tomson Commercial Building
710 Dongfang Road
Pudong, Shanghai, China
Phone: 86-21-6165-2282
Fax: 86-21-6165-2283

Yankton

1703 E. Highway 50
Yankton, SD 57078-0630 USA
Phone: 605-665-9321
Toll Free: 800-762-8800
Fax: 605-665-1709

Asia Pacific

Unit 1108, 11th Floor, APEC Plaza
48 Hoi Yuen Road
Kwun Tong, Kowloon, Hong Kong, China
Phone: 852-2866-8023
Fax: 852-2529-1822

India

Noida
SDF-D3 Zone (NSEZ) Special Economic
Noida - 201305 (U.P.)
New Delhi, India
Phone 91-120-256-2014
Fax: 91-120-256-3242

Europe

Bolwerk 26
Veldhoven – 5509 MH
Netherlands
Phone: 31-40-368-6818
Fax: 31-40-368-3501

MtronPTI may change specifications without notice to improve end application performance or product manufacturability.

No liability is assumed as a result of product use or application.

Please contact MtronPTI for latest information.

Copyright © 2014 MtronPTI