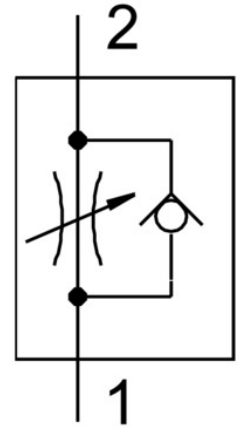


One-way flow control valve GRLZ-M3-QS-3

Part number: 175043

FESTO



Data sheet

| Feature | Value |
|--|--|
| Type code | GRLZ |
| Valve function | Supply air flow control non-return function |
| Pneumatic connection 1 | QS-3 |
| Pneumatic connection 2 | M3 |
| Adjusting element | Slotted screw |
| Type of mounting | Screw-in |
| Standard nominal flow rate in flow control direction | 41 l/min |
| Standard nominal flow rate in non-return direction | 27 l/min ... 44 l/min |
| Operating pressure | 0.2 bar ... 10 bar |
| Ambient temperature | -10 °C ... 60 °C |
| Mounting position | Any |
| Symbol | 00991453 |
| Standard flow rate in flow control direction 6 -> 0 bar | 95 l/min |
| Standard flow rate in non-return direction at 6 -> 0 bar | 75 l/min ... 100 l/min |
| Operating medium | Compressed air as per ISO 8573-1:2010 [7:4:4] |
| Information on operating and pilot media | Operation with oil lubrication possible (required for further use) |
| Temperature of medium | -10 °C ... 60 °C |
| Max. tightening torque | 0.3 Nm |
| Product weight | 7 g |
| Material of screwed trunnion | Brass Nickel-plated |
| Note on materials | RoHS-compliant |
| Seals material | NBR |
| Releasing ring material | POM |
| Material of adjusting screw | Brass |
| Swivel joint material | Die-cast zinc |