

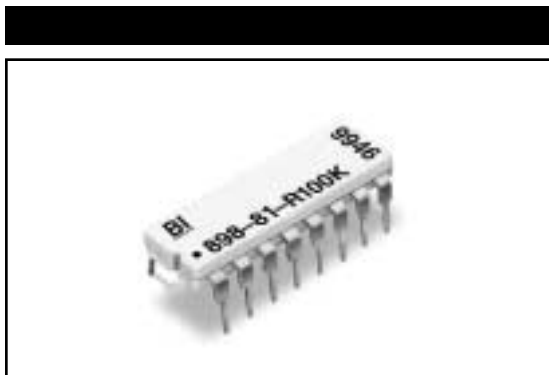
MODELS 898, 899

R/2R Ladder

Dual-In-Line

Thick Film

Resistor Networks



ELECTRICAL

Standard Resistance Range, Ohms	1K to 500K
Standard Resistance Tolerance, at 25°C	±2%
Operating Temperature Range	-40°C to +70°C
Temperature Coefficient of Resistance	±100ppm/°C
Maximum Operating Voltage	100Vdc or √PR
Insulation Resistance	≥10,000 Megohms
Ladder Network Accuracy	8 Bits: ±1/2LSB, -40°C to +70°C 10 Bits: ±1LSB, -40°C to +70°C

MECHANICAL

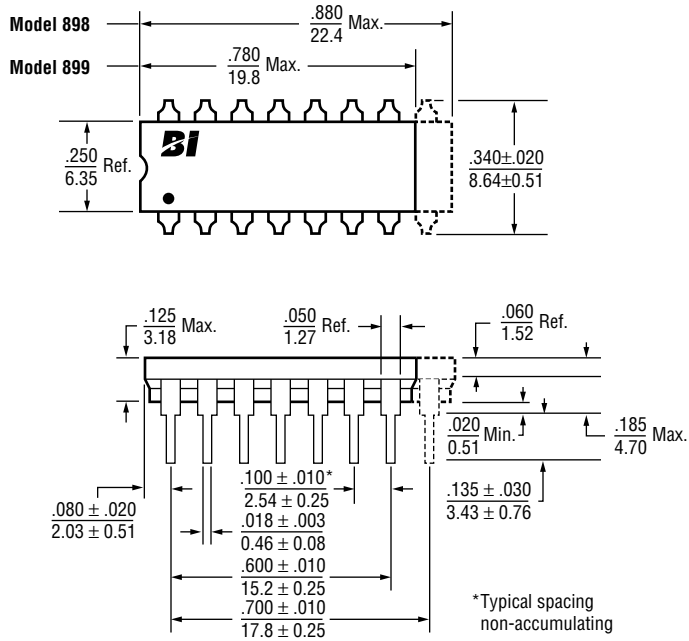
Lead Material	Copper Alloy, 60/40 Tin-Lead Plating
Substrate Material	Alumina
Resistor Material	Cermet

APPLICABLE DOCUMENTS

MIL-R-83401 — Resistor Networks, Fixed, Film, General Specifications
MIL-STD-202 — Test Methods for Electronic and Electrical Component Parts
MIL-STD-105 — Sampling Procedures and Tables for Inspection by Attributes

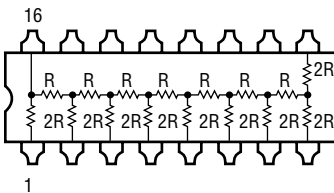
Specifications subject to change without notice.

OUTLINE DIMENSIONS (Inch/mm)

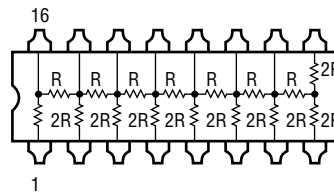


SCHEMATICS

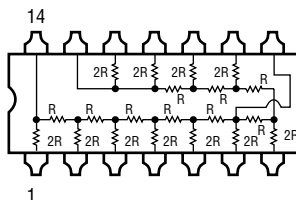
898-81 Circuit
8 Bits, 16 Leads



898-82 Circuit
8 Bits, 16 Leads



899-10 Circuit
10 Bits, 14 Leads



Note: Custom configurations are available. Consult factory.

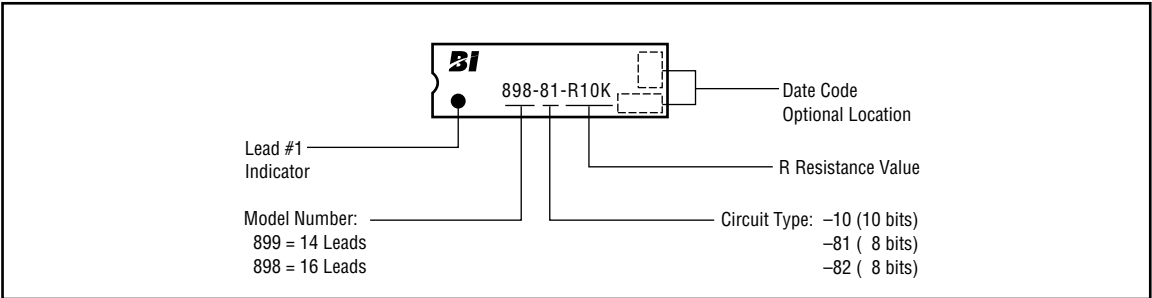
STANDARD RESISTANCE VALUES, OHMS

R/2R	R/2R	R/2R
10K/20K	25K/50K	100K/200K
	50K/100K	

POWER DISSIPATION, WATTS AT 70°C

Model	Per Package	Per Resistor
898-8X	0.8	.050
899-10	1.0	.050

TYPICAL PART MARKING



4

PACKAGING

Standard: Magazines
All Units oriented with lead #1 to the same side.

Magazine:	Material	=	Antistatic Plastic
	Capacity	=	25 Units

ORDERING INFORMATION

