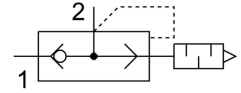


Quick exhaust valve SEU-3/8-NPT

Part number: 9800

FESTO



Data sheet

Feature	Value
Valve function	Quick exhaust
Selection of additional function	With silencer
Pneumatic connection 1	3/8 NPT
Pneumatic connection 2	3/8 NPT
Type of mounting	Screw-in
Standard nominal flow rate exhaust air 6→5 bar	2280 l/min
Standard flow rate exhaust 6→0 bar	4680 l/min
Standard nominal flow rate pressurization 6→5 bar	2880 l/min
Operating pressure	0.2 bar ... 10 bar
Ambient temperature	-20 °C ... 75 °C
Operating medium	Compressed air as per ISO 8573-1:2010 [7:-:-]
Nominal width	11 mm
Symbol	00991460
Information on operating and pilot media	Operation with oil lubrication possible (required for further use)
Temperature of medium	-20 °C ... 75 °C
Noise level	83 dB(A)
Note on materials	RoHS-compliant