

Customer Information Sheet

DRAWING No.: M50-315XXXX

SHEET 2 OF 2

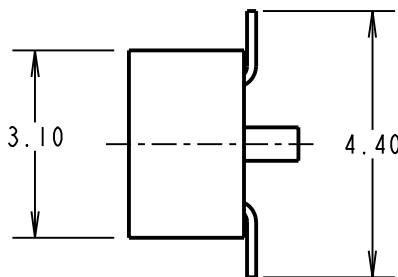
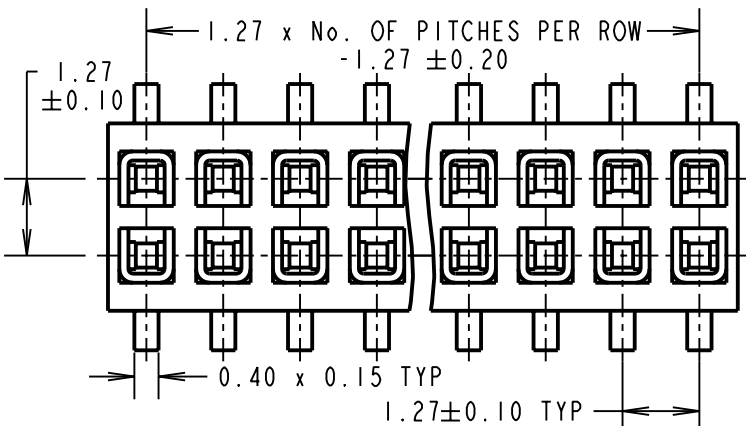
IF IN DOUBT - ASK

©

NOT TO SCALE

THIRD ANGLE PROJECTION

ALL DIMENSIONS IN mm



SPECIFICATION:

MATERIAL:

MOULDING = 30% GLASS FILLED NYLON-6T UL94V-0

CONTACTS = PHOSPHOR BRONZE

FINISH:

42 = GOLD ON CONTACT AREA, 100% TIN ON TAILS

ELECTRICAL:

CURRENT RATING (ALL CONTACTS ARE

ELECTRICALLY LOADED) = 1A

CONTACT RESISTANCE = 20mΩ MAX

INSULATION RESISTANCE = 1000MΩ MIN @ 250V

DIELECTRIC WITHSTANDING = 500V AC (1 MINUTE)

MECHANICAL:

CONTACT RETENTION = 2.5N MIN

INSERTION FORCE = 2.0N MAX

WITHDRAWAL FORCE = 0.3N MIN

SOLDERABILITY = 260°C FOR 3 SECONDS

DURABILITY = 25 CYCLES

ENVIRONMENTAL:

TEMPERATURE RANGE = -40°C TO +105°C

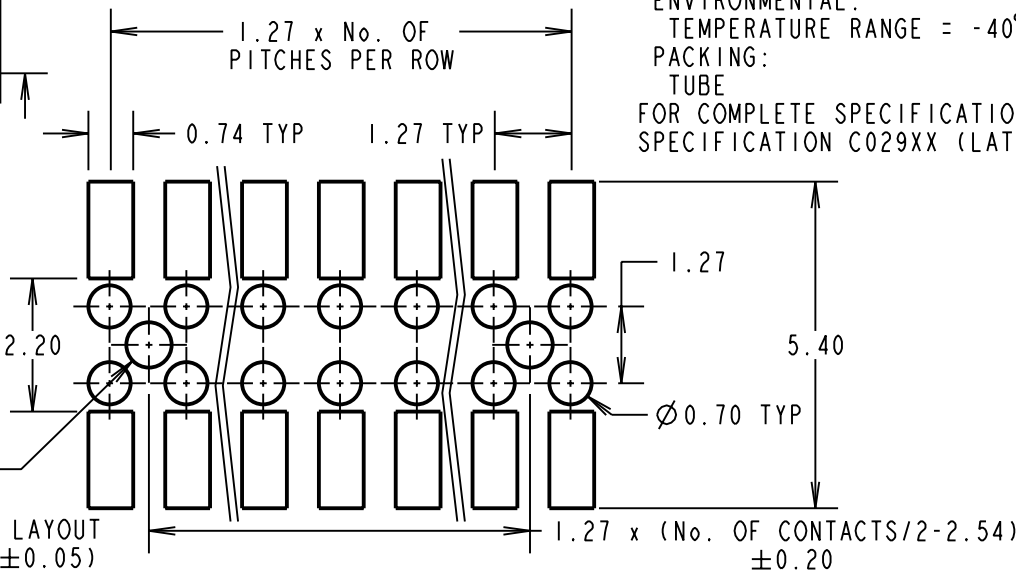
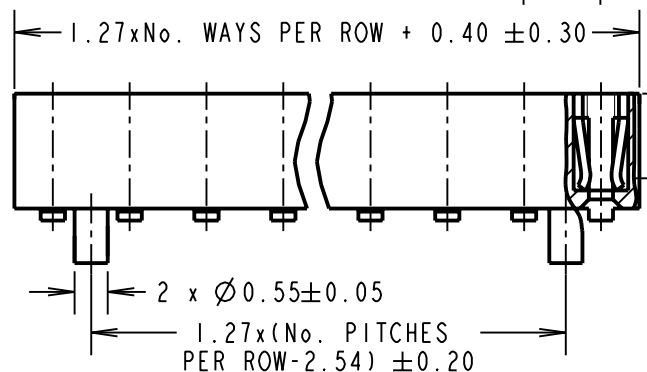
PACKING:

TUBE

FOR COMPLETE SPECIFICATION, SEE COMPONENT SPECIFICATION C029XX (LATEST ISSUE)

NOTES:

1. ALL TOLERANCES ARE ±0.25 UNLESS OTHERWISE STATED.



ORDER CODE

M50-315XXXX

No. OF WAYS PER ROW: _____

03 TO 50

FINISH: _____

42 = SELECTIVE GOLD + 100% TIN

RECOMMENDED PCB LAYOUT
(PCB TOLERANCE ±0.05)

SM	8	10.05.10	10786
NAME	ISS.	DATE	C/NOTE
APPROVED: S. MCCULLAGH			
CHECKED: R. ADDE			
DRAWN: W. J. BOURNE			
CUSTOMER REF.:			
ASSEMBLY DRG:			

HARWIN

HARWIN USA
TEL: 603 893 5376
FAX: 603 893 5396
mis@harwin.com

HARWIN Europe (UK)
TEL: 023 9231 4545
FAX: 023 9231 4590
mis@harwin.co.uk

HARWIN Asia
TEL: +65 6 779 4909
FAX: +65 6 779 3868
mis@harwin.com.sg

THIS DRAWING AND ANY INFORMATION OR DESCRIPTIVE MATTER SET OUT HEREON ARE CONFIDENTIAL AND COPYRIGHT PROPERTY OF THE HARWIN GROUP AND MUST NOT BE DISCLOSED, LOANED, COPIED OR USED FOR MANUFACTURING, TENDERING OR FOR ANY OTHER PURPOSE WITHOUT THEIR WRITTEN PERMISSION.

TOLERANCES
X = ±1mm
X.X = ±0.25mm
X.XX = ±0.10mm
X.XXX = ±0.01mm
ANGLES = ±5°
UNLESS STATED

MATERIAL:
SEE ABOVE
FINISH: SEE ABOVE
S/AREA: mm²

TITLE:
1.27mm PITCH DIL SMT VERT.
LOW-PROFILE SOCKET ASSY
DRAWING NUMBER:
M50-315XXXX
SHT 2 OF 2