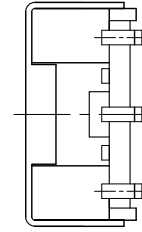
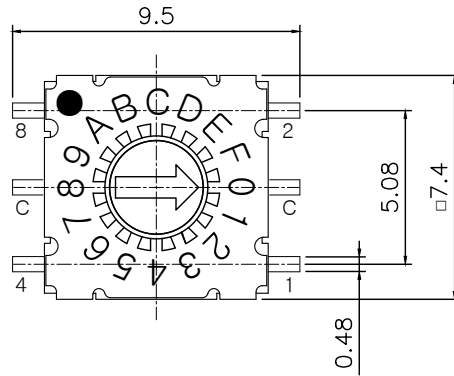
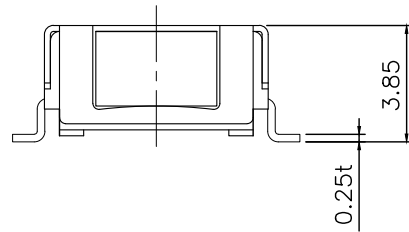


MRK.	DATE	REVISION	SIGN
△			

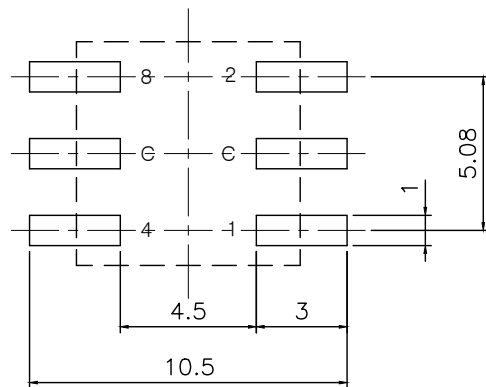


SPECIFICATION

- Operating Voltage : 42V
(None-Switching : 100mA)
(Switching : 400mA)
- Contact Resistance : 80mΩ Max
- Insulation Resistance : 100MΩ Min AT DC 250V
- Operating Force : 120±30gf Max
- Life Cycle : 25,000 steps
- Sealing : Comparable IP67



		Real Coded				
		C	1	2	4	8
10 P o s i t i o n	0	●				
	1	●	●			
	2	●		●		
	3	●	●	●		
	4	●			●	
	5	●	●		●	
	6	●		●		●
	7	●	●	●	●	
	8	●				●
	9	●	●			
16 P o s i t i o n	A	●		●		●
	B	●	●	●		●
	C	●			●	●
	D	●	●		●	●
	E	●		●	●	●
	F	●	●	●	●	●



P.C.B DIMENSION

DRAW/DESIGNED	CHECKED	APPROVED		G.TOL	TITLE		
<i>[Signature]</i>	<i>[Signature]</i>	<i>[Signature]</i>		±0.1	MINI ROTARY SWITCH		
2020-04-17			UNIT mm	SCALE 4:1	MODEL	MDDR-16S	SHEET
SUNG MUN ELECTRONICS CO.,LTD				SIZE A4	DRAW NO.	MDDR-16S	1/1