

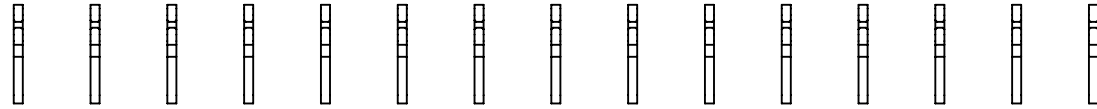
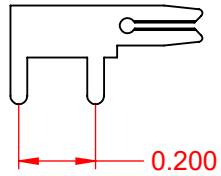
| TOLERANCE UNLESS OTHERWISE SPECIFIED | |
|--|-------|
| .X | ±0.25 |
| .XX | ±0.13 |
| .XXX | ±0.05 |

THIS IS A C.A.D. GENERATED DRAWING
DO NOT MAKE MANUAL REVISIONS TO MASTER.

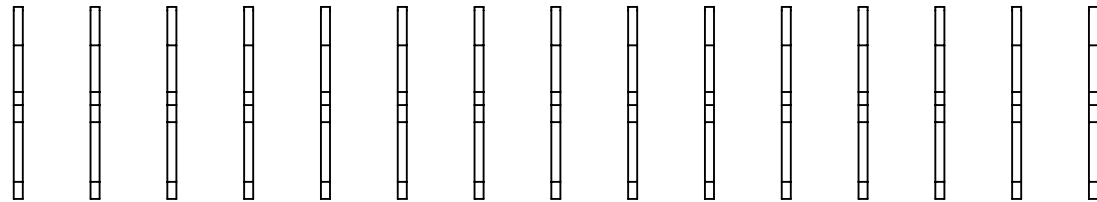


| ISSUE NUMBER | |
|--------------|---|
| ORIGINAL | ① |

CONTACT 100-290-203



.200 CONTACT SPACING
TOTAL NUMBER OF CONTACTS 15



NOTE:
CONTACTS ARE HELD IN
A CARRIER FOR EASE OF ASSEMBLY



THIS SERIES FULLY CONFORMS TO
THE EUROPEAN UNION DIRECTIVES
2011/65/EU FOR RoHS COMPLIANCY.



EDAC INC
TORONTO, ONTARIO
CANADA
YOUR CONNECTION TO QUALITY & SERVICE

THESE DRAWINGS AND SPECIFICATIONS
ARE THE PROPERTY OF EDAC INC., AND
SHALL NOT BE REPRODUCED, OR COPIED
OR USED AS THE BASIS FOR THE
MANUFACTURE OR SALE OF APPARATUS
WITHOUT WRITTEN PERMISSION.

| 105 SERIES - VERTICAL CONTACT PATTERN | | ACAD REFERENCE NO.: 105 Assembly | |
|---------------------------------------|-------|----------------------------------|---------------------|
| | | DRAWN: C.B | DATE: April 8, 2020 |
| CHECKED: | DATE: | SCALE: 2:1 | SHEET 1 OF 1 |
| DRAWING NUMBER: 105 Assembly | | ISSUE | |
| PART NUMBER: 105-015-203-200 | | 1 | |