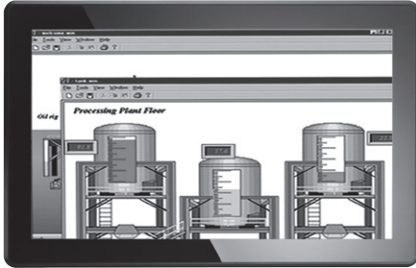


P6157W

15.6" WXGA TFT Widescreen Industrial LCD Monitor



- | | |
|-----------------|-------------------------|
| 1. Exit | 7. DC power input |
| 2. Menu | 8. T/S port |
| 3. SEL- | 9. DVI (Only for DVI-D) |
| 4. SEL+ | 10. VGA |
| 5. Power LED | 11. Video (CVBS) |
| 6. Power switch | 12. S-video |

Features

- 15.6" TFT 300 nits WXGA LCD
- NEMA 4/12 (IP65)- compliant panel mounting flat panel monitor
- Supports panel mount, wall mount, VESA mount
- Multi touch 15.6" projective capacitive
- Supports full range screw-type (locked) AC-in or 24V DC-in (option)
- Supports multi-signal inputs: VGA, S-video, Video and DVI-D



▲ Modularized design

Introduction

The P6157W is a slim & compact with flat front bezel design industrial LCD monitor, which adopts 15.6-inch 300 nits WXGA LCD display and supports multi-signal interfaces including DVI, VGA, S-Video, Video. Featuring NEMA4/12 & IP65 compliant front bezel, screw-type adaptor plug design, and 12/24V DC-In means it is fit for all kinds of industrial environments. Moreover, the P6157W supports panel mount, wall mount or VESA FPMPMI (Video Electronics Standards Association Flat Panel Monitor Physical Mounting Interface) mounting. With the compact mechanism design, users can enjoy free from space constraint. It is especially suitable for POI/POS, excellent HMI and all kinds of heavy-duty industrial fields.

Specifications

| | | |
|---------------------------------|--|--------------------|
| Front Bezel | NEMA 4/12 (IP65)-compliant, metal front bezel | |
| Mounting | Panel mounting, wall mounting, VESA FPMPMI mounting (video electronics standards association flat panel monitor physical mounting interface) | |
| LCD Panel | Display | 15.6" TFT WXGA LCD |
| | Max. Resolution | 1366 x 768 |
| | Max. Colors | 16.7M |
| | Active Area (mm) | 344.232 x 193.536 |
| | Pixel Pitch (mm) | 0.252 x 0.252 |
| | Response Time | 8ms |
| | Backlight | LED |
| | Backlight MTBF | 50,000 hrs |
| | Viewing Angle (H/V) | 170°/160° |
| | Contrast Ratio | 500 (TYP.) |
| Brightness (cd/m ²) | 300 nits | |
| Display Control | OSD (on screen display) | |
| Display Mode | VGA 640 x 350 (70Hz), VGA 640 x 480 (60/72/75Hz), VGA 720 x 400 (70Hz), SXGA 800 x 600 (60/72/75Hz), XGA 1024 x 768 (60/72/75Hz), WXGA 1366 x 768 (60Hz) | |

