

4

3

2

1

THIS DRAWING IS UNPUBLISHED. RELEASED FOR PUBLICATION

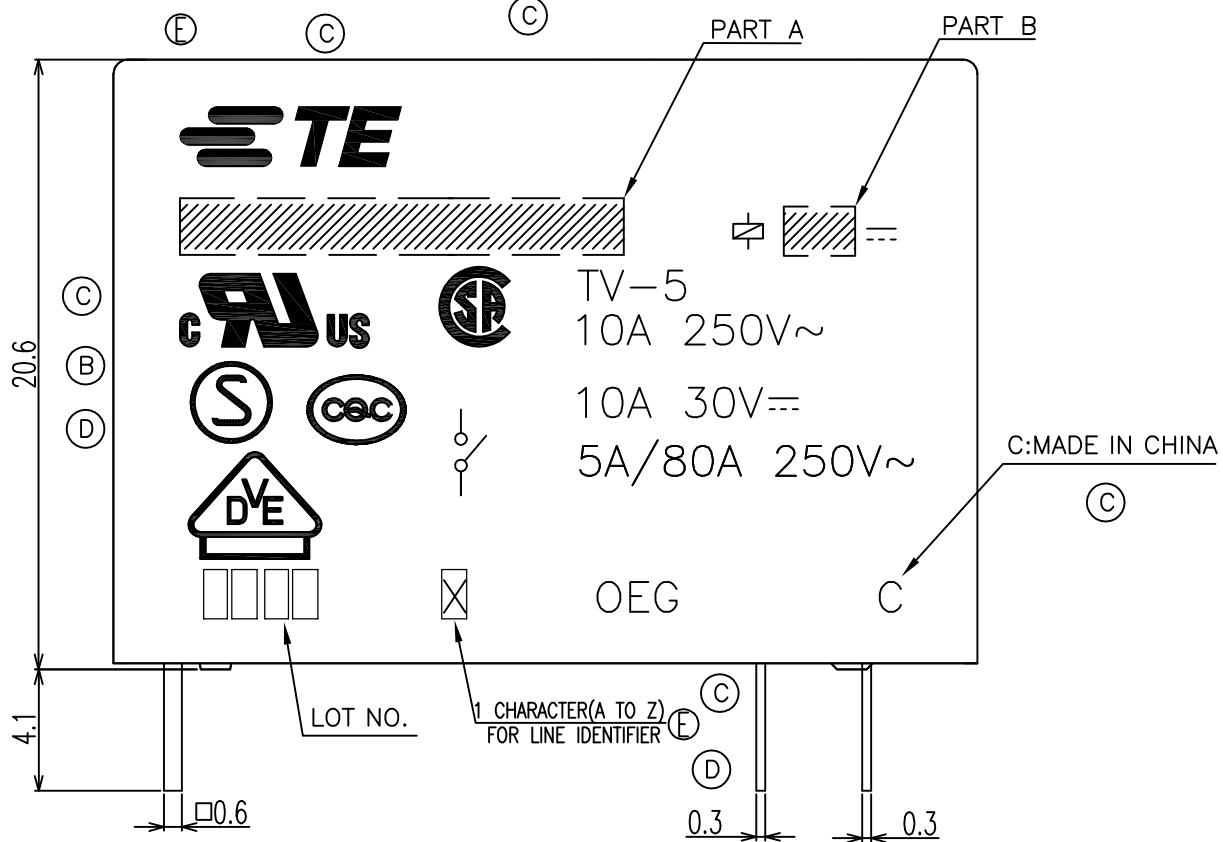
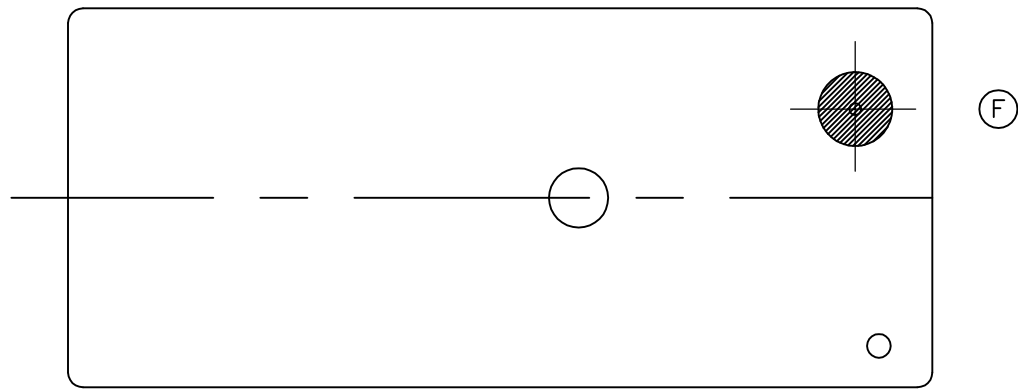
© COPYRIGHT - By TE Connectivity

ALL RIGHTS RESERVED.

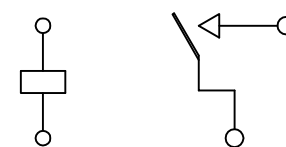
LOC HB DIST -

REVISIONS

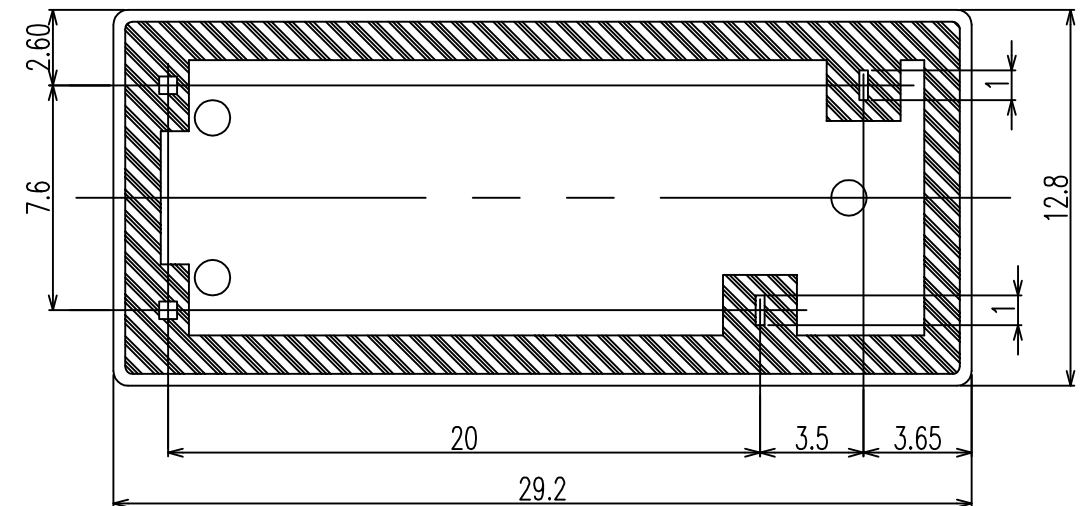
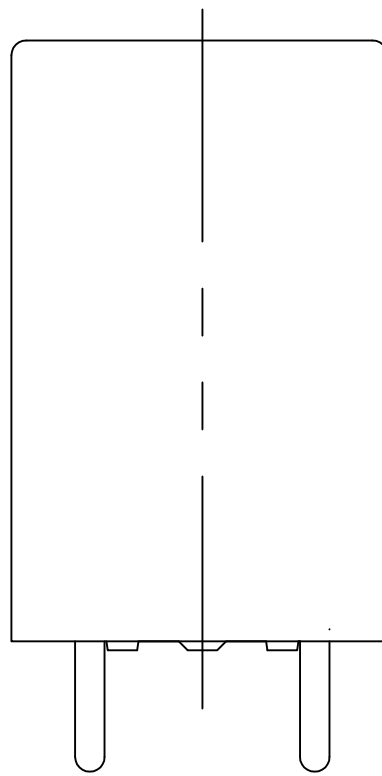
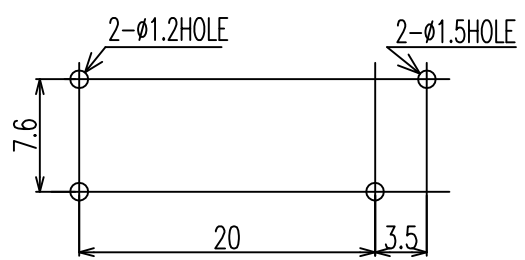
P	LTR	DESCRIPTION	DATE	DWN	APVD
E		1.UPDATE TE LOGO&VDE LOGO2.ADD LINE IDENTIFICATION 3.TERMINALS TOLERANCE CLARIFICATION4.VENT HOLE CHANGE	ECO-12-005726	06-APR-12	D.L BH.Y
F		REVISE ONLY	ECO-13-015347	16-DEC-13	XL,Y B,F



CONNECTION DIAGRAM (BOTTOM VIEW)



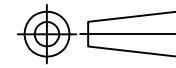
DRILLING DIAGRAM(2/1) (BOTTOM VIEW)



THIS DRAWING IS A CONTROLLED DOCUMENT.

DIMENSIONS: mm

TOLERANCES UNLESS OTHERWISE SPECIFIED:



- 0 PLC ± -
- 1 PLC ± -
- 2 PLC ± -
- 3 PLC ± -
- 4 PLC ± -
- ANGLES ± -

MATERIAL -

FINISH -

DWN FU.BO
CHK ZHANG.XIAONING
APVD C.H.HSU
PRODUCT SPEC -
APPLICATION SPEC -
WEIGHT -
CUSTOMER DRAWING



NAME			
OMIT CUSTOMER DRAWING			
SIZE	CAGE CODE	DRAWING NO	RESTRICTED TO
A3	00779	C=9-1440000-6	-
SCALE 4:1		SHEET 1 of 2	REV F

THIS DRAWING IS UNPUBLISHED.

RELEASED FOR PUBLICATION

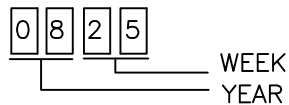
© COPYRIGHT - By TE Connectivity

ALL RIGHTS RESERVED.

LOC	DIST	REVISIONS					
HB	-	P	LTR	DESCRIPTION	DATE	DWN	APVD
		-		SEE SHEET 1	-	-	-

NOTES:

Ⓑ 1.LOT NO. SYSTEM AS FOLLOING:



2.GENERAL TOLERANCE AS FOLLOING:

TOLERANCE	
0~0.99mm	±0.1
1mm~2.99mm	±0.2
3mm MIN.	±0.3

Ⓒ 3.TERMINAL DIMENSION IS NOT INCLUDING SOLDER TIP.

Ⓔ 4.FOR THE TIN-PLATING OF THE PINS:
+0.1mm FOR WIDTH,THICKNESS AND DIAMETER.
+0.5mm FOR LENGTH.

2-1461387-3	OMIT-SH-148LM	48V	OMIT-SH-148LM
2-1461387-1	OMIT-SH-148DM	48V	OMIT-SH-148DM
1-1461387-9	OMIT-SH-124LM	24V	OMIT-SH-124LM
1-1461387-7	OMIT-SH-124DM	24V	OMIT-SH-124DM
9-1440000-6	OMIT-SH-112LM	12V	OMIT-SH-112LM
1-1461387-4	OMIT-SH-112DM	12V	OMIT-SH-112DM
1-1461387-2	OMIT-SH-109LM	9V	OMIT-SH-109LM
1-1461387-0	OMIT-SH-109DM	9V	OMIT-SH-109DM
1461387-8	OMIT-SH-106LM	6V	OMIT-SH-106LM
1461387-6	OMIT-SH-106DM	6V	OMIT-SH-106DM
1461387-4	OMIT-SH-105LM	5V	OMIT-SH-105LM
1461387-2	OMIT-SH-105DM	5V	OMIT-SH-105DM
TE PART NO	DESCRIPTION	PART B	PART A

RELAY TYPE

		UV RESIN	UV SEAL	16
		EPOXY RESIN	SEAL	15
UL94 V-0		PBT	CASE	14
CLASS E		UEW	MAGNETIC WIRE	13
UL94 V-0		PET	BASE	12
UL94 V-0		PBT	BOBBIN	11
	SOLDER DIP	CP WIRE	COIL TERMINAL	10
UL94 V-0		PPS	CARD	9
		Ag ALLOY	MOVABLE CONTACT	8
		Ag ALLOY	STATIONARY CONTACT	7
		Cu ALLOY	HINGE SPRING	6
	SOLDER DIP	Cu ALLOY	STATIONARY TERMINAL	5
	SOLDER DIP	Cu ALLOY	MOVABLE SPRING	4
		STEEL	CORE	3
		STEEL	ARMATURE	2
		STEEL	YOKE	1
INCOMBUSTIBILITY	TREATMENT	MATERIAL	DESCRIPTION	ITEM

THIS DRAWING IS A CONTROLLED DOCUMENT.

DIMENSIONS: mm	TOLERANCES UNLESS OTHERWISE SPECIFIED:
	0 PLC ± -
	1 PLC ± -
	2 PLC ± -
	3 PLC ± -
	4 PLC ± -
	ANGLES ± -
MATERIAL	FINISH
-	-

DWN FU.BO			
CHK ZHANG.XIAONING	NAME		
APVD C.H.HSU	PRODUCT SPEC		
APPLICATION SPEC	OMIT CUSTOMER DRAWING		
WEIGHT	SIZE A3	CAGE CODE 00779	DRAWING NO C=9-1440000-6
CUSTOMER DRAWING	RESTRICTED TO	SCALE 4:1	SHEET 2 of 2
		REV F	