

Fig. 1

Standard Height 50 ohm BNC Printed Circuit Board Right Angle Bulkhead Receptacles ☆

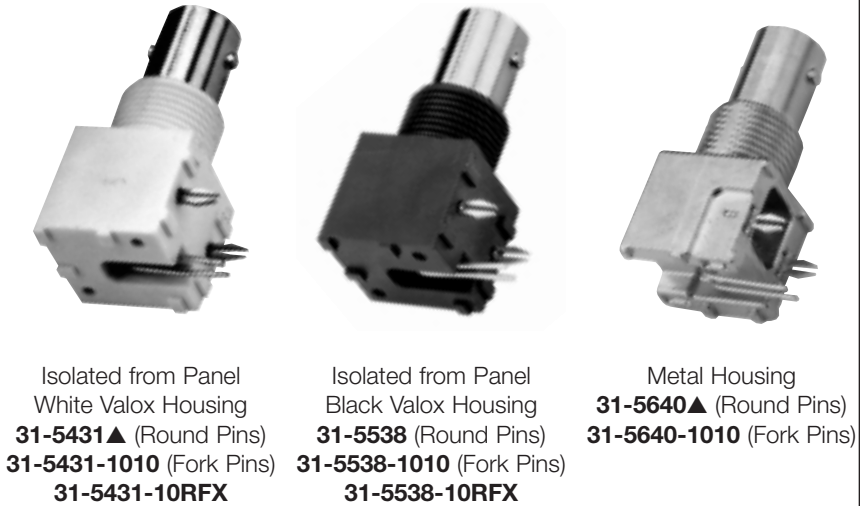
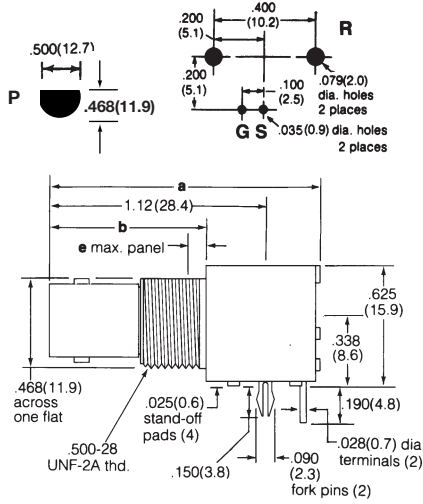


Fig. 2

Low Profile 50 ohm BNC Printed Circuit Board Bulkhead Receptacles ☆

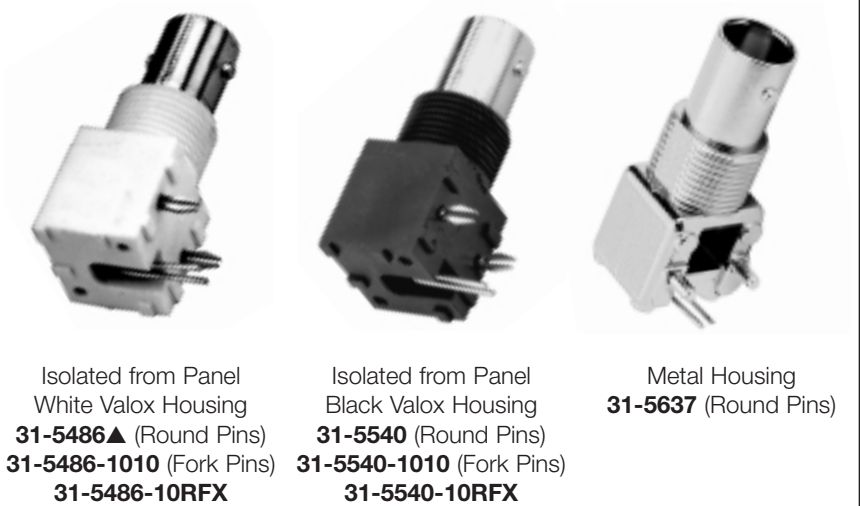
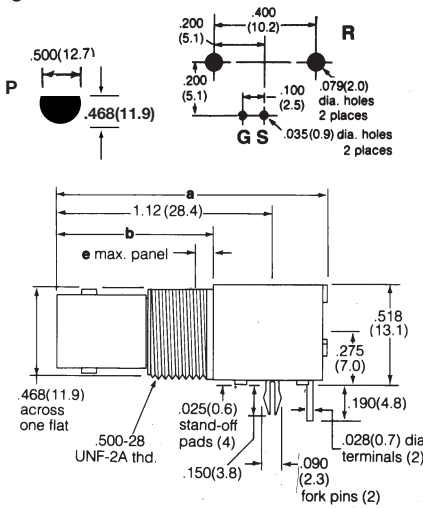
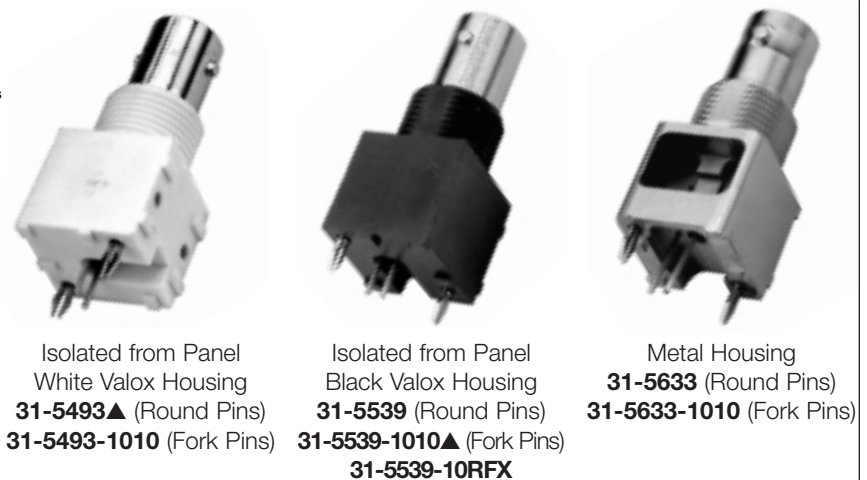
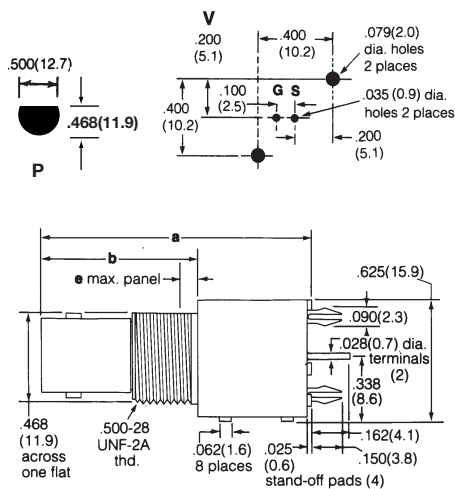
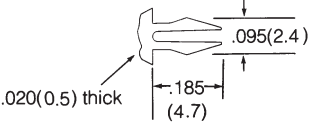

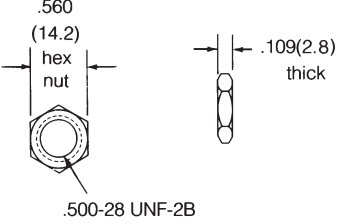

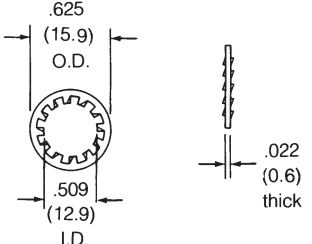
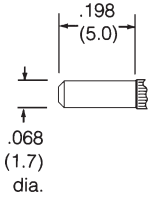


Fig. 3

Vertical 50 ohm BNC Printed Circuit Board Bulkhead Receptacles ☆



▲ distributor stocked ☆ Jam nuts and lockwashers sold separately.

 <p>Fork Pin holds connectors rigidly to P.C. Board for high temperature and mass production assembly</p>	<p>Fig. 4</p>   <p>Pkg. of 100, Hex Nut for BNC Bulkhead PCB Receptacles <b>31-5652▲</b> Nickel Plated</p>	<p>Fig. 5</p>   <p>Pkg. of 100, Lockwasher for BNC PCB Bulkhead Receptacles <b>31-5653▲</b> Nickel Plated</p>
 <p>Round Pin (Standard)</p>		

## BNC PRINTED CIRCUIT BOARD BULKHEAD RECEPTACLES AND ACCESSORIES

Description	Terminal Type	Dimensions, inches (millimeters)			Notes		Mtg. Hole	Notes	MTG. Pin Type	Imp	Amphenol Number	Fig.
		a	b	e	Pit.	Ins.						
Standard Height Printed Circuit Angle Bulkhead Receptacle (J)☆	Blunt Posts for Signal & Ground	1.40(35.6)	.810(20.6)	.250(6.4)	P26	D17	R/P	Iso. White Housing	Round	50Ω	<b>31-5431</b>	1
					P26	D17	Fork		50Ω	<b>31-5431-1010</b>		
					P26	D20	R/P	Iso. Black Housing	Round	50Ω	<b>31-5538</b>	
					P26	D20	Stamp		50Ω	<b>31-5538-10RFX</b>		
					P26	D22	R/P	Metal Housing	Round	50Ω	<b>31-5640</b>	
					P26	D22	Fork		50Ω	<b>31-5640-1010</b>		
					P25	D17	R/P	Iso. White Housing	Fork	50Ω	<b>31-5431-10RFX</b>	
Low Profile Printed Circuit Angle Bulkhead Receptacle (J)☆	Blunt Posts for Signal & Ground	1.40(35.6)	.810(20.6)	.250(6.4)	P26	D17	R/P	Iso. White Housing	Round	50Ω	<b>31-5486</b>	2
					P26	D17	Fork		50Ω	<b>31-5486-1010</b>		
					P26	D20	R/P	Iso. Black Housing	Round	50Ω	<b>31-5540</b>	
					P26	D20	Fork		50Ω	<b>31-5540-1010</b>		
					P26	D22	R/P	Metal Housing	Round	50Ω	<b>31-5637</b>	
Vertical Printed Circuit Bulkhead Receptacle (J)☆	Blunt Posts for Signal & Ground	1.40(35.6)	.810(20.6)	.250(6.4)	P26	D17	V/P		Iso. White Housing	Round	50Ω	<b>31-5493</b>
					P26	D17		Fork		50Ω	<b>31-5493-1010</b>	
					P26	D20	V/P	Iso. Black Housing	Round	50Ω	<b>31-5539</b>	
					P26	D20			Fork	50Ω	<b>31-5539-1010</b>	
					P26	D22	V/P	Metal Housing	Round	50Ω	<b>31-5633</b>	
					P26	D22			Fork	50Ω	<b>31-5633-1010</b>	
					P25	D13	R/P	Iso. White Housing	Fork	50Ω	<b>31-5486-10RFX</b>	
					P25	D20	R/P	Iso. Black Housing	Fork	50Ω	<b>31-5540-10RFX</b>	
Hex Nut for BNC Bulkhead PCB Receptacles, Package of 100 ea.					P3	—	—	Nickel Plated	—	—	<b>31-5652</b>	4
Lockwasher for BNC Bulkhead PCB Receptacles, Package of 100 ea.					P3	—	—	Nickel Plated	—	—	<b>31-5653</b>	5

☆ Jam nuts and lockwashers sold separately. See Figs. 4 & 5 ▲ distributor stocked