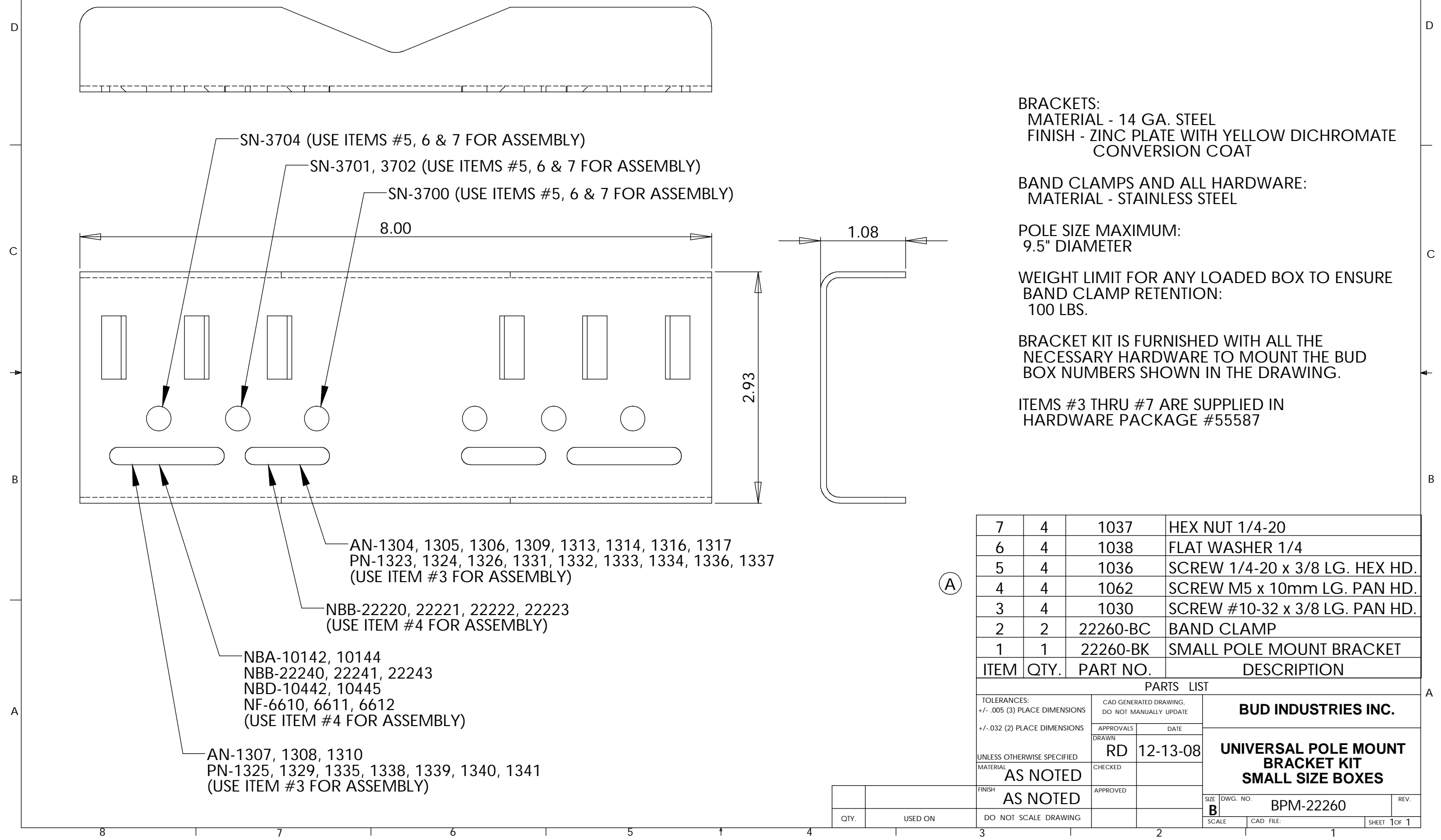


THE INFORMATION CONTAINED IN THIS DRAWING IS THE SOLE PROPERTY OF BUD INDUSTRIES INC. ANY REPRODUCTION IN PART OR WHOLE WITHOUT THE WRITTEN PERMISSION OF BUD INDUSTRIES INC. IS PROHIBITED.

DWG. NO.	BPM-22260
ISSUE	REVISIONS
(A)	PER ECN #10546 11-3-09 DAB



BRACKETS:
MATERIAL - 14 GA. STEEL
FINISH - ZINC PLATE WITH YELLOW DICHROMATE CONVERSION COAT

BAND CLAMPS AND ALL HARDWARE:
MATERIAL - STAINLESS STEEL

POLE SIZE MAXIMUM:
9.5" DIAMETER

WEIGHT LIMIT FOR ANY LOADED BOX TO ENSURE BAND CLAMP RETENTION:
100 LBS.

BRACKET KIT IS FURNISHED WITH ALL THE NECESSARY HARDWARE TO MOUNT THE BUD BOX NUMBERS SHOWN IN THE DRAWING.

ITEMS #3 THRU #7 ARE SUPPLIED IN HARDWARE PACKAGE #55587

SN-3704 (USE ITEMS #5, 6 & 7 FOR ASSEMBLY)
SN-3701, 3702 (USE ITEMS #5, 6 & 7 FOR ASSEMBLY)
SN-3700 (USE ITEMS #5, 6 & 7 FOR ASSEMBLY)

AN-1304, 1305, 1306, 1309, 1313, 1314, 1316, 1317
PN-1323, 1324, 1326, 1331, 1332, 1333, 1334, 1336, 1337
(USE ITEM #3 FOR ASSEMBLY)

NBB-2220, 2221, 2222, 2223
(USE ITEM #4 FOR ASSEMBLY)

NBA-10142, 10144
NBB-22240, 22241, 22243
NBD-10442, 10445
NF-6610, 6611, 6612
(USE ITEM #4 FOR ASSEMBLY)

AN-1307, 1308, 1310
PN-1325, 1329, 1335, 1338, 1339, 1340, 1341
(USE ITEM #3 FOR ASSEMBLY)

ITEM	QTY.	PART NO.	DESCRIPTION
7	4	1037	HEX NUT 1/4-20
6	4	1038	FLAT WASHER 1/4
5	4	1036	SCREW 1/4-20 x 3/8 LG. HEX HD.
4	4	1062	SCREW M5 x 10mm LG. PAN HD.
3	4	1030	SCREW #10-32 x 3/8 LG. PAN HD.
2	2	22260-BC	BAND CLAMP
1	1	22260-BK	SMALL POLE MOUNT BRACKET

(A)

PARTS LIST			
TOLERANCES: +/- .005 (3) PLACE DIMENSIONS +/- .032 (2) PLACE DIMENSIONS		CAD GENERATED DRAWING, DO NOT MANUALLY UPDATE	
UNLESS OTHERWISE SPECIFIED		APPROVALS DRAWN RD	DATE 12-13-08
MATERIAL AS NOTED		CHECKED	
FINISH AS NOTED		APPROVED	
DO NOT SCALE DRAWING			
QTY.		USED ON	

BUD INDUSTRIES INC.

**UNIVERSAL POLE MOUNT BRACKET KIT
SMALL SIZE BOXES**

SIZE **B** DWG. NO. BPM-22260 REV.
SCALE CAD FILE: SHEET 1 OF 1